



2019 Ford Explorer Base

Our Price \$29,995

View this vehicle on our website at autodepotcalexico.com

Auto Depot of Calexico

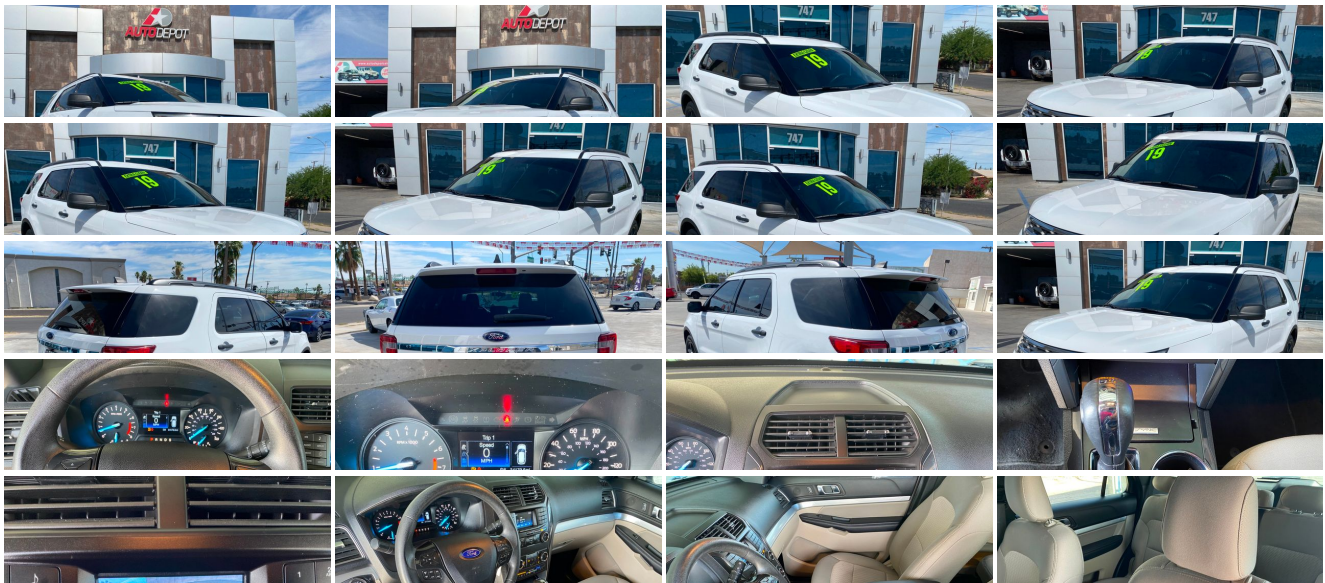
760-357-0043

747 Imperial Ave , Calexico, CA 92231

Photos

Details

Contact



Specifications:

Year:	2019
VIN:	1FM5K7B88KGB09419
Make:	Ford
Stock:	6031
Model/Trim:	Explorer Base
Condition:	Pre-Owned
Body:	SUV
Exterior:	Oxford White
Engine:	ENGINE: 3.5L TI-VCT V6
Interior:	Medium Stone Cloth
Mileage:	34,174
Drivetrain:	Front Wheel Drive
Economy:	City 17 / Highway 24

Vehicle Description

Installed Options

Interior

- Full Carpet Floor Covering -inc: Carpet Front And Rear Floor Mats
- Gauges -inc: Speedometer, Odometer, Engine Coolant Temp, Tachometer, Trip Odometer and Trip Computer
- Manual Air Conditioning
- Power 1st Row Windows w/Driver And Passenger 1-Touch Up/Down
- Power Door Locks w/Autolock Feature
- Power Rear Windows and Fixed 3rd Row Windows- Rear HVAC w/Separate Controls
- Remote Keyless Entry w/Integrated Key Transmitter, Illuminated Entry, Illuminated Ignition Switch and Panic Button
- Trip Computer- 2 Seatback Storage Pockets- 4 12V DC Power Outlets
- 60-40 Folding Split-Bench Front Facing Manual Reclining Tumble Forward Cloth Rear Seat w/Manual Fore/Aft
- Air Filtration- Analog Appearance- Cargo Area Concealed Storage
- Cargo Space Lights- Carpet Floor Trim
- Cloth Bucket Seats -inc: 8-way power driver's seat w/power lumbar and manual recline, 4-way manual front passenger seat w/manual recline and 4-way manually adjustable driver and front passenger head restraints
- Cloth Door Trim Insert- Compass- Cruise Control w/Steering Wheel Controls
- Day-Night Rearview Mirror- Delayed Accessory Power
- Driver / Passenger And Rear Door Bins
- Driver And Passenger Visor Vanity Mirrors w/Driver And Passenger Illumination
- Driver Foot Rest- Driver Seat- FOB Controls -inc: Cargo Access
- Fade-To-Off Interior Lighting
- Fixed 50-50 Split-Bench Cloth 3rd Row Seat Front, Manual Fold Into Floor and 2 Fixed Head Restraints
- Front And Rear Map Lights- Front Center Armrest- Front Cupholder
- Full Cloth Headliner
- Full Floor Console w/Covered Storage, Mini Overhead Console w/Storage and 4 12V DC Power Outlets
- HVAC -inc: Underseat Ducts, Auxiliary Rear Heater and Headliner/Pillar Ducts
- Illuminated Locking Glove Box
- Interior Trim -inc: Metal-Look Instrument Panel Insert, Metal-Look Door Panel Insert, Metal-Look Console Insert and Chrome/Metal-Look Interior Accents
- Leather/Chrome Gear Shifter Material- Manual Adjustable Rear Head Restraints
- Manual Tilt/Telescoping Steering Column- Outside Temp Gauge- Passenger Seat
- Rear Cupholder- Seats w/Cloth Back Material
- Securilock Anti-Theft Ignition (pats) Engine Immobilizer- Systems Monitor

Exterior

- Auto On/Off Aero-Composite Led Low Beam Daytime Running Lights Preference Setting Headlamps w/Delay-Off
- Tailgate/Rear Door Lock Included w/Power Door Locks- Tires: P245/60R18 AS BSW

Option Packages

Factory Installed Packages

ENGINE: 3.5L TI-VCT V6

STANDARD PAINT

OXFORD WHITE

MEDIUM STONE, CLOTH BUCKET SEATS

- inc: 8-way power driver's seat w/power lumbar and manual recline, 4-way manual front passenger seat w/manual recline and 4-way manually adjustable driver and front passenger head restraints

- Black Bodyside Cladding and Black Wheel Well Trim- Black Door Handles
- Black Power Heated Side Mirrors w/Convex Spotter and Manual Folding
- Black Side Windows Trim and Black Front Windshield Trim
- Body-Colored Front Bumper w/Black Rub Strip/Fascia Accent
- Body-Colored Rear Step Bumper w/Black Rub Strip/Fascia Accent- Clearcoat Paint
- Compact Spare Tire Mounted Inside Under Cargo- Deep Tinted Glass
- Fixed Rear Window w/Fixed Interval Wiper, Heated Wiper Park and Defroster
- Galvanized Steel/Aluminum Panels- LED Brakelights- Laminated Glass
- Lifegate Rear Cargo Access- Lip Spoiler- Metal-Look Grille w/Chrome Surround
- Roof Rack Rails Only- Speed Sensitive Variable Intermittent Wipers
- Steel Spare Wheel- Wheels: 18" Painted Aluminum

Safety

- Full Carpet Floor Covering -inc: Carpet Front And Rear Floor Mats
- Gauges -inc: Speedometer, Odometer, Engine Coolant Temp, Tachometer, Trip Odometer and Trip Computer
- Manual Air Conditioning
- Power 1st Row Windows w/Driver And Passenger 1-Touch Up/Down
- Power Door Locks w/Autolock Feature
- Power Rear Windows and Fixed 3rd Row Windows- Rear HVAC w/Separate Controls
- Remote Keyless Entry w/Integrated Key Transmitter, Illuminated Entry, Illuminated Ignition Switch and Panic Button
- Trip Computer- 2 Seatback Storage Pockets- 4 12V DC Power Outlets
- 60-40 Folding Split-Bench Front Facing Manual Reclining Tumble Forward Cloth Rear Seat w/Manual Fore/Aft
- Air Filtration- Analog Appearance- Cargo Area Concealed Storage
- Cargo Space Lights- Carpet Floor Trim
- Cloth Bucket Seats -inc: 8-way power driver's seat w/power lumbar and manual recline, 4-way manual front passenger seat w/manual recline and 4-way manually adjustable driver and front passenger head restraints
- Cloth Door Trim Insert- Compass- Cruise Control w/Steering Wheel Controls
- Day-Night Rearview Mirror- Delayed Accessory Power
- Driver / Passenger And Rear Door Bins
- Driver And Passenger Visor Vanity Mirrors w/Driver And Passenger Illumination
- Driver Foot Rest- Driver Seat- FOB Controls -inc: Cargo Access
- Fade-To-Off Interior Lighting
- Fixed 50-50 Split-Bench Cloth 3rd Row Seat Front, Manual Fold Into Floor and 2 Fixed Head Restraints
- Front And Rear Map Lights- Front Center Armrest- Front Cupholder
- Full Cloth Headliner
- Full Floor Console w/Covered Storage, Mini Overhead Console w/Storage and 4 12V DC Power Outlets
- HVAC -inc: Underseat Ducts, Auxiliary Rear Heater and Headliner/Pillar Ducts
- Illuminated Locking Glove Box
- Interior Trim -inc: Metal-Look Instrument Panel Insert, Metal-Look Door Panel Insert, Metal-Look Console Insert and Chrome/Metal-Look Interior Accents
- Leather/Chrome Gear Shifter Material- Manual Adjustable Rear Head Restraints
- Manual Tilt/Telescoping Steering Column- Outside Temp Gauge- Passenger Seat
- Rear Cupholder- Seats w/Cloth Back Material
- Securilock Anti-Theft Ignition (pats) Engine Immobilizer- Systems Monitor

Mechanical

- Engine: 3.5L Ti-VCT V6 (FFV) -inc: Flexible Fuel Vehicle (FFV) system is standard equipment for vehicles w/the 3.5L Ti-VCT V6 engine shipped to Federal Emissions States or Cross Border State dealers and is only available w/a Federal emissions system, (FFV system not available w/code 422 and requires code 936 or 423 if applicable for California Emissions State dealer destinations).Cross border states include AZ, DC, ID, NH, NV, OH, VA, WV Not standard equipment in CA Emissions States.
- Transmission: 6-Speed SelectShift Automatic- 175 Amp Alternator- 18.6 Gal. Fuel Tank
- 3.39 Non-Limited-Slip Axle Ratio
- 4-Wheel Disc Brakes w/4-Wheel ABS, Front And Rear Vented Discs, Brake Assist and Hill Hold Control
- 58-Amp/Hr 540CCA Maintenance-Free Battery w/Run Down Protection
- Electric Power-Assist Speed-Sensing Steering- Front And Rear Anti-Roll Bars
- Front-Wheel Drive- GVWR: 6,160 lbs- Gas-Pressurized Shock Absorbers
- Multi-Link Rear Suspension w/Coil Springs
- Quasi-Dual Stainless Steel Exhaust w/Chrome Tailpipe Finisher
- Strut Front Suspension w/Coil Springs- Towing Equipment -inc: Trailer Sway Control

View this car on our website at autodepotcalexico.com/6960388

Website: autodepotcalexico.com

Phone: 760-357-0043

Map: 747 Imperial Ave, Calexico, CA 92231

