



2005 CHEVROLET C5500 CREW CAB DURAMAX DIESEL ROLLBACK PRE-DEF ONLY 39K MILE MINT

Our Price \$63,900

View this vehicle on our website at njtruckking.com

King of Cars and Trucks

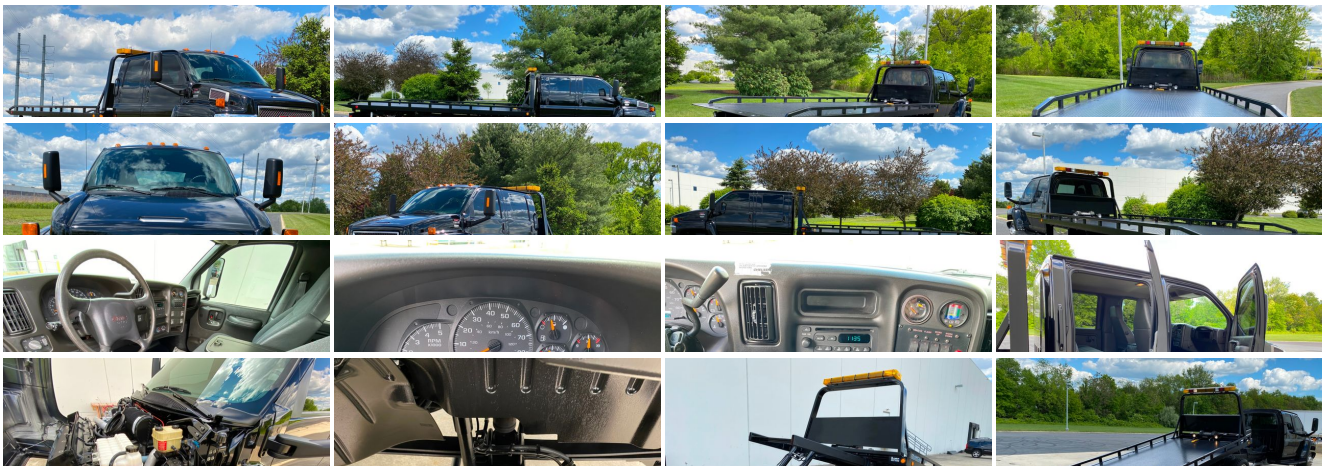
[856-693-3181](tel:856-693-3181)

1229 Broadway , Westville, New Jersey 08093

[Photos](#)

[Details](#)

[Contact](#)





Specifications:

Year:	2005
VIN:	1GDE5E1255F510154
Make:	CHEVROLET C5500 CREW
Model/Trim:	CAB DURAMAX DIESEL ROLLBACK PRE-DEF ONLY 39K MILE MINT
Condition:	Pre-Owned
Body:	Pickup Truck
Exterior:	Black
Engine:	DURAMAX DIESEL 6600, 300 HP (223 KW) @ 3000 RPM, 520 LB-FT (702 N-M) TORQUE @ 1,600 RPM
Interior:	Gray
Mileage:	39,808
Drivetrain:	Rear Wheel Drive

Vehicle Description

39K MILE CREW CAB PRE-DEF DURAMAX TOW TRUCK!

2005 CHEVROLET C5500 2-CAR ROLLBACK

CREW CAB

PRE-DEF !

6.6L DURAMAX TURBO DIESEL

AUTOMATIC TRANSMISSION

2-OWNER

CLEAN CARFAX

PRIVATELY USED

(ONLY 39,808 ORIGINAL / ACTUAL MILES)

YES! ONLY 39K ORIGINAL MILES!!!!

19'6" X 96" VULCAN STEEL BED

W/ WHEEL LIFT

3 KEYS/ 2 FOBS

ALL THE BOOKS / RECORDS

LIKE NEW TIRES

TOOLBOX

DUAL CONTROLS

GARAGED SINCE NEW

TRUCK IS IN EXCELLENT CONDITION

WEST COAST TRUCK

RARE RARE COMBO

SPECIAL ORDERED

METICULOUSLY MAINTAINED

RUNS AND DRIVES LIKE NEW AND TIGHT!

TRUCK IS IMMACULATE!

UNBELIEVABLE CONDITION

ONLY 39K MILES!

PRE-DEF DIESEL

READY TO WORK

NEW CREW CAB TRUCK WILL COST YOU 100K +

WILL NOT LAST !

BUY IT NOW

\$63,900

CALL / TEXT ROB 856-381-6621 WITH ANY QUESTIONS

Installed Options

Interior

- Powerpoints - one in-cab power source (in addition to optional cigarette lighter) for electrical plug-in accessories
- Radio, Delco AM-FM stereo radio - with coaxial speakers in all door panels
- Seat trim, vinyl, Very Dark Pewter
- Seat, driver, high-back bucket, fixed height, manual adjuster - storage in the seat riser with a small lip at the front to stop contents from sliding out
- Seat, passenger, high-back bucket, fixed height, manual back angle adjuster - storage in the seat riser with a small lip at the front to stop contents from sliding out
- Underhood bodybuilder connections accessory power supply - Provides 12V power supply from the battery with two separate 30 amp fused circuits
- Air conditioning not desired - this option should be ordered only when a customer does not require air conditioning
- Cloth headliner- Coat hooks (2) located on cab back panel
- Electronic engine hour meter
- Engine "Check Gauges" telltale light and buzzer, oil pressure gauge
- Gauges, low oil pressure and coolant level, high coolant and engine oil temperature
- Headlamp warning buzzer
- Interior trim, Very Dark Pewter (Requires 69U Very Dark Pewter Vinyl or 69C Very Dark Pewter Cloth)
- Molded vinyl floor covering- Rear bench seat- Seat belt warning indicator
- Steering wheel, simulated leather- Steering, power - ZF variable ratio power
- Sunshades, passenger side and driver side, vinyl-covered
- Tachometer with automatic and manual transmissions
- Trim console - located next to driver's seat, and two cupholder
- Two sided single common key for doors and ignition
- Vinyl door trim panels - with storage pocket on front doors, beverage holders, and reflector on all doors
- Warning tone, key-in-ignition

Exterior

- Daytime running lights
- Bumper, front, steel, 96" (243.8 cm) wide - styled to minimized wall to wall turn diameter painted argent
- Exterior roof drip moldings
- Integral grille and fenders - The grille is the same color as hood with single halogen headlamps.
- Mirror, manual, 102" (259 cm) wide load, integral arm, integral convex mirror - black molded composite 12" x 7" (30.5 cm x 17.8 cm) with 6" x 7" (15.2 cm x 17.8 cm) convex section
- Paint scheme, solid, lower color- Paint scheme, solid, upper color
- Provisions for mounting front license plate- Steps under cab doors
- Windows, Solar-Ray tinted - front windows only; excluding rearside and rear windows
- Windshield wipers, intermittent, with pulse washers

Safetv

Option Packages

Factory Installed Packages

DURAMAX DIESEL 6600, 300 HP (223 KW) @ 3000 RPM, 520 LB-FT (702 N-M) TORQUE @ 1,600 RPM
(Includes KPJ Engine shutdown) **\$7,691**

Option Packages Total

\$7,691

body

- Powerpoints - one in-cab power source (in addition to optional cigarette lighter) for electrical plug-in accessories
- Radio, Delco AM-FM stereo radio - with coaxial speakers in all door panels
- Seat trim, vinyl, Very Dark Pewter
- Seat, driver, high-back bucket, fixed height, manual adjuster - storage in the seat riser with a small lip at the front to stop contents from sliding out
- Seat, passenger, high-back bucket, fixed height, manual back angle adjuster - storage in the seat riser with a small lip at the front to stop contents from sliding out
- Underhood bodybuilder connections accessory power supply - Provides 12V power supply from the battery with two separate 30 amp fused circuits
- Air conditioning not desired - this option should be ordered only when a customer does not require air conditioning
- Cloth headliner- Coat hooks (2) located on cab back panel
- Electronic engine hour meter
- Engine "Check Gauges" telltale light and buzzer, oil pressure gauge
- Gauges, low oil pressure and coolant level, high coolant and engine oil temperature
- Headlamp warning buzzer
- Interior trim, Very Dark Pewter (Requires 69U Very Dark Pewter Vinyl or 69C Very Dark Pewter Cloth)
- Molded vinyl floor covering- Rear bench seat- Seat belt warning indicator
- Steering wheel, simulated leather- Steering, power - ZF variable ratio power
- Sunshades, passenger side and driver side, vinyl-covered
- Tachometer with automatic and manual transmissions
- Trim console - located next to driver's seat, and two cupholder
- Two sided single common key for doors and ignition
- Vinyl door trim panels - with storage pocket on front doors, beverage holders, and reflector on all doors
- Warning tone, key-in-ignition

Mechanical

- Brakes, front, power, 4-wheel disc, 4 channel ABS 4-piston - (See Front Axle options more details)
- Brakes, rear, power, 4-wheel disc, 4 channel ABS 2-piston - (See Rear Axle options for more detail)
- Engine, Vortec 8100MD gasoline V8, 225 hp (167 kw) @ 3600 rpm and 350 lb-ft torque (473 N-m) @ 1,200 rpm. - Maximum engine speed 5000 rpm
- Front tire size, 225/70R19.5F - 7280 lbs. (3802 kg) capacity, (With R4A Goodyear or R4L Michelin, requires R3C front premium highway tread; with R4N Bridgestone requires R3M front all season tread)
- Front wheels, 19.5" x 6.75" (49.5 cm x 17.1 cm), steel disc - 8-hole. 10,000 lbs. (4536 kg) capacity, (Requires Q83 steel rear wheel)
- Rear wheels, 19.5" x 6.75" (49.5 cm x 17.1 cm), steel disc - 8-hole, 20,000 lbs. (9072 kg) capacity, (Requires Q82 steel front wheel)
- Transmission, Allison 1000 Series automatic - with 0.71 overdrive. Torque Rating: 520 lb-ft (705 N-m). Column shift. Base model does not include power take-off gear, to include PTO gear please order with RPO "PTO". Includes transmission-oil cooler located inside radiator and an air-to-oil auxiliary cooler. PTO mounting location on the driver's side. (N/A with GW2 or GW4 GVWR Sales Packages) With Option PTX, the truck will be equipped with the Allison 1000HS Highway Series transmission. When ordered with option PTO the truck will be equipped with the Allison 1000RDS Rugged Duty Series transmission.
- Air cleaner, dry type
- Alternator, AD230 Delco Remy 105-amp maximum (N/A with YW2 wrecker package)
- Battery, single 600 CCA Delphi Freedom 12V - 115-minute reserve capacity @ 27 degrees C, 600 CCA @ -18 degrees C grounded directly to starter, (Requires LQR gasoline engine) (N/A with YW2 wrecker packages)
- Cooling, anti-freeze protection temperature - -40 degrees F (-40 degrees C)
- Exhaust, single horizontal - passenger side mounted inside frame rail, stainless-steel with gasoline engines, aluminized steel with diesel engines
- Frame, 8mm - 80,000 psi (551,600 kPa) yield strength, steel frame, RBM: 610,400 Section Modulus 7.63
- Front axle, 7000 lbs. (3175 kg) capacity - I-beam Wide-trac. Up to 53 degree turn angle, (Includes 4-piston brake apply calipers) (Requires GZG or GZJ GVWRs)
- Front shock absorber, diameter 1.375" (35mm)
- Front stabilizer bar, 2" x 2" square tube (5 cm x 5 cm)
- Front suspension, tapered leaf, 7000 lbs. (3175 kg) capacity (includes stabilizer) (Requires GZG or GZJ GVWRs)
- Front tire manufacturer code, Goodyear (Requires S4A Goodyear)
- Front tread, premium, highway (Requires R4A Goodyear or R4L Michelin)
- Fuel sender assembly. Robust fuel pump
- Fuel tank, single, 40-gallon (151L) fuel capacity - gas or diesel, located behind rear axle with fuel fill neck through frame rail, DRIVER SIDE FILL NECK ONLY. NO AUXILIARY FUEL PORTS (N/A with YW2 Wrecker Package) MINIMUM OVERHANG = 60" (5 FEET)
- GVWR, 19,500 lbs. (8845 kg) capacity - GCWR limited to 26,000 lb. (11,794 kg)
- Option PTO not required - This option should only be ordered when a customer specifically does not require an electric hand throttle for use with power-take-off provisions. (Note: may delete transmission PTO gear.)
- Parking brake, hand lever operated transmission mounted drum brake

- Rear axle ratio, 4.78:1, (Available with all rear axles)
- Rear axle, single speed, 13,500 lbs. (6123 kg) capacity - full floating, includes 2-piston brake applied calipers (Requires GZG or GZJ GVWs)
- Rear shock absorber, 1.375" (35mm)
- Rear stabilizer bar, provides increased load stabilization - improves handling and reduces vehicle roll. Does not adversely affect ride. Diameter 44mm, (Required with taper leaf springs) (Available with multi leaf springs)
- Rear suspension, multi-leaf, 15,000 lbs. (6804 kg) capacity (Requires GZG or GZJ GVW and GN1 rear stabilizer bar with a GL8 rear axle or with H08 rear axle GW2 GVWR package is required)
- Rear tire manufacturer code, Goodyear (Requires R4A Goodyear)
- Rear tire size, 225/70R19.5F - 13,660 lbs. (6196 kg) capacity, (With S4A Goodyear, requires S3C rear premium highway tread or S3H rear traction tread; with S4L Michelin, requires S3C rear premium highway tread or S3J rear highway traction tread; with S4N Bridgestone requires S3M rear all season tread)
- Rear tread, premium, highway (Requires S4A Goodyear or S4L Michelin)
- Rear wheel drive
- Road Speed Governor, controlled by the speed rating of the tires ordered. - which will be less than or equal to 85 mph (137 kph); 75 mph (120 kph) with 245/70R19.5 tires (required for 22,000 to 26,000 lb GVWRs)
- Tethered fuel cap
- Wheelbase, 169" (429.3 cm) - with 60" (152.4) CA and 121 (307.3 cm) CE. Includes a 8 mm 80,000 psi (551,600 kPa) yield strength, steel frame, RBM: 824,800 section Modulus 10.31 (GVW's 18,000 - 26,000 lbs.)

King of Cars and Trucks

King of Cars and Trucks

View this car on our website at njtruckking.com/6955142

Website: njtruckking.com

Phone: 856-693-3181

Map: [1229 Broadway, Westville, New Jersey 08093](#)

