

2021 Jeep Gladiator Rubicon 4X4 LIFTED,BUMPERS,LED'S,NAV,FUEL WHLS

View this car on our website at tveauto.com/6953765/ebrochure



Our Price **\$82,900**

Specifications:

Year:	2021
VIN:	1C6JJTBG4ML539925
Make:	Jeep
Stock:	539925
Model/Trim:	Gladiator Rubicon 4X4 LIFTED,BUMPERS,LED'S,NAV,FUEL WHLS
Condition:	Pre-Owned
Body:	Pickup Truck
Exterior:	Hydro Blue Pearlcoat
Engine:	ENGINE: 3.6L V6 24V VVT UPG I W/ESS
Interior:	Black Leather
Transmission:	TRANSMISSION: 8-SPEED AUTOMATIC (850RE)
Mileage:	65
Drivetrain:	4 Wheel Drive
Economy:	City 16 / Highway 22

NATION WIDE FINANCING

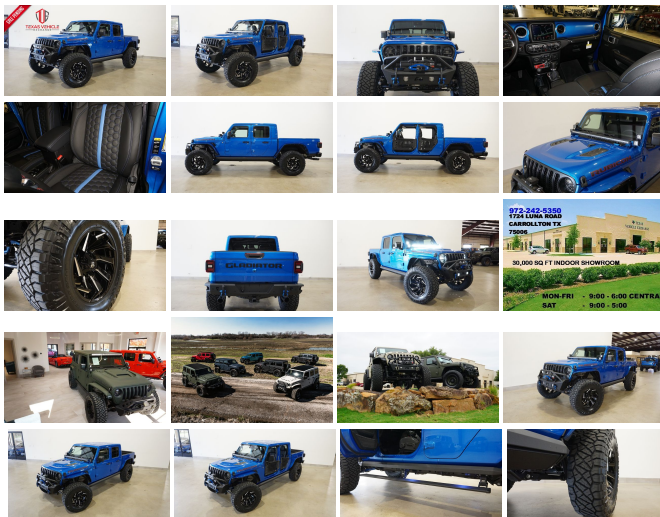
SUBMIT CREDIT APP WWW.TVEAUTO.COM

OR CALL 972-242-5350

"HYDRO BLUE PEARL COAT EDITION"

CUSTOM BUILT 2021 JEEP GLADIATOR
RUBICON 4X4 WITH 24R PACKAGE

UPGRADES INCLUDE:



-
- * HYDRO BLUE PEARL COAT
 - * PAINTED TO MATCH 3 PIECE HARD TOP
 - * CUSTOM ALEA BLACK LEATHER WITH BLUE STITCHING
 - * FACTORY REMOTE START
 - * REMOTE PROXIMITY KEYLESS ENTRY
 - * COLD WEATHER GROUP
 - * LED LIGHTING GROUP
 - * ACTIVE SAFETY GROUP
 - * ADVANCE SAFETY GROUP
 - * TRAILER TOW PACKAGE
 - * FORWARD FACING TRAIL CAM
 - * FACTORY 8.4 INCH TOUCH SCREEN NAVIGATION WITH HD AM/FM/SIRIUS STEREO & ALPINE PREMIUM AUDIO SYSTEM
 - * FACTORY BACK-UP CAMERA
 - * U-CONNECT
 - * 4 BODY ARMOR TRAIL DOORS & RECON MIRRORS
 - * FAB FOURS STUBBY FRONT BUMPER WITH LED FOGLIGHTS
 - * FRONT D-RINGS & ISOLATORS (HYDRO BLUE)

 - * SMITTYBILT NEW GEN II "X20" 10,000 LB WATERPROOF AND WIRELESS CONTROL WINCH WITH SYNTHETIC ROPE
 - * FACTOR 55 PROLINK (BLACK)
 - * FACTORY LED HEADLIGHTS
 - * RUGGED RIDGE BLACK HEADLIGHT GUARDS
 - * MOPAR 10TH ANNIVERSARY RUBICON POWER DOME HOOD
 - * DV8 OFF ROAD .II SI IM STFFI FFNDFR

DV8 OFF ROAD FRONT & REAR STEEL FENDERS
FLARES (PAINTED TO MATCH)

* DV8 OFF ROAD FRONT & REAR INNER
FENDERS

* RUBICON EXPRESS 3.5" LIFT KIT WITH
TERAFLEX FALCON SHOCKS

* TERAFLEX FALCON STABILIZER KIT

* SUSPENSION PARTS (PAINTED HYDRO
BLUE)

* MOPAR AUXILIARY SWITCH BANK KIT

* 50" LED LIGHT BAR AND 4 RIGID
INDUSTRIES DUALY D2 LED PILLAR
LIGHTS (LIGHT BRACKETS PAINTED TO
MATCH)

* AMP RESEARCH POWERSTEP XL
RUNNING BOARDS WITH LED LIGHT KIT

* SPRAY IN BEDLINER

* RUGGED RIDGE HD REAR BUMPER WITH
REAR PARK DISTANCE SENSORS

* REAR D-RINGS & ISOLATORS (HYDRO
BLUE)

* MAGNAFLOW CAT-BACK BLACK EXHAUST
SYSTEM

* ALL WEATHER FLOOR MATS

* TAZER JL PROGRAMMER WITH
SPEEDOMETER CALIBRATION

* 20" FUEL GLOSS BLACK MILLED
"REACTION" WHEELS

* BRAND NEW NITTO RIDGE GRAPPLER
38X13.50R/20 TIRES

**WE BUILD EVERY JEEP WITH PRIDE! DO
NOT HESITATE TO CALL US WITH THIS
JEEP BUILD. WE CAN MAKE CHANGES TO
THIS JEEP BUILD OR CUSTOM BUILD ANY
JEEP TO YOUR PREFERENCE. GIVE US A
CALL @ 972-242-5350 OR STOP BY FOR A
TEST DRIVE. 1724 LUNA RD IN**

CARROLLTON - 2 MILES NORTH OF 635.

2021 Jeep Gladiator Rubicon 4X4 LIFTED,BUMPERS,LED'S,NAV,FUEL WHLS

Texas Vehicle Exchange - 972-242-5350 - View this car on our website at tveauto.com/6953765/ebrochure

Our Location :



2021 Jeep Gladiator Rubicon 4X4 LIFTED,BUMPERS,LED'S,NAV,FUEL WHLS

Texas Vehicle Exchange - 972-242-5350 - View this car on our website at tveauto.com/6953765/ebrochure

Installed Options

Interior

- 6-Way Driver Seat -inc: Manual Recline, Height Adjustment, Fore/Aft Movement and Manual Lumbar Support
- Front Seats w/Cloth Back Material and Manual Driver Lumbar
- Full Carpet Floor Covering -inc: Carpet Front And Rear Floor Mats
- Gauges -inc: Speedometer, Odometer, Voltmeter, Oil Pressure, Engine Coolant Temp, Tachometer, Engine Hour Meter, Trip Odometer and Trip Computer
- Power 1st Row Windows w/Driver And Passenger 1-Touch Down
- Power Door Locks w/Autolock Feature- Power Rear Windows
- Premium Cloth Low-Back Bucket Seats- Proximity Key For Push Button Start Only
- Remote Keyless Entry w/Integrated Key Transmitter, Illuminated Entry and Panic Button
- Trip Computer- 2 12V DC Power Outlets
- 2 12V DC Power Outlets and 1 120V AC Power Outlet - 2 Seatback Storage Pockets
- 4-Way Passenger Seat -inc: Manual Recline and Fore/Aft Movement
- 60-40 Folding Split-Bench Front Facing Fold Forward Seatback Premium Cloth Rear Seat
- 97 mph Maximum Speed Calibration- Air Filtration- Analog Appearance- Compass
- Cruise Control w/Steering Wheel Controls- Day-Night Rearview Mirror
- Delayed Accessory Power
- Driver And Passenger Visor Vanity Mirrors w/Driver And Passenger Illumination
- Fade-To-Off Interior Lighting- Front And Rear Map Lights
- Front Center Armrest w/Storage
- Full Floor Console w/Locking Storage, 2 12V DC Power Outlets and 1 120V AC Power Outlet

Option Packages

Factory Installed Packages

ENGINE: 3.6L V6 24V VVT UPG I W/ESS

TRANSMISSION: 8-SPEED AUTOMATIC (850RE)

-inc: Tip Start, Transmission Skid Plate, Selec-Speed Control \$2,000

8.4" RADIO & PREMIUM AUDIO GROUP

-inc: Emergency/Assistance Call, SiriusXM Traffic Plus, Alpine Premium Audio System, HD Radio, Radio: Uconnect 4C Nav w/8.4" Display, Rear View Auto Dim Mirror, For Details, Visit DriveUconnect.com, 1-Year SiriusXM Guardian Trial, 5-Year SiriusXM Travel Link Service, 5-Year SiriusXM Traffic Service, SiriusXM Travel Link \$1,995

ADVANCED SAFETY GROUP

-inc: Advanced Brake Assist, Auto High Beam Headlamp Control, Full Speed Forward Collision Warning Plus \$795

AUXILIARY SWITCH GROUP

- Garage Door Transmitter- HVAC -inc: Console Ducts- Illuminated Front Cupholder
- Illuminated Rear Cupholder
- Instrument Panel Bin, Dashboard Storage, Driver / Passenger And Rear Door Bins
- Interior Trim -inc: Metal-Look Instrument Panel Insert, Metal-Look Door Panel Insert, Metal-Look Console Insert and Metal-Look Interior Accents
- Leather Steering Wheel- Locking Glove Box
- Manual Adjustable Front Head Restraints and Foldable Rear Head Restraints
- Manual Tilt/Telescoping Steering Column- Outside Temp Gauge- Perimeter Alarm
- Redundant Digital Speedometer- Sentry Key Engine Immobilizer
- Smart Device Integration- Systems Monitor- Urethane Gear Shifter Material
- Voice Activated Dual Zone Front Automatic Air Conditioning

Exterior

- Auto On/Off Aero-Composite Halogen Daytime Running Headlamps w/Delay-Off
- Black Front Bumper w/2 Tow Hooks- Black Rear Bumper w/2 Tow Hooks
- Front Fog Lamps- Manual Convertible Top w/Fixed Roll-Over Protection
- Tailgate/Rear Door Lock Included w/Power Door Locks- Tires: LT285/70R17C BSW A/T
- Wheels: 17" x 7.5" Granite Crystal Aluminum - Black Door Handles
- Black Power Heated Side Mirrors w/Manual Folding- Black Side Windows Trim
- Black Wheel Well Trim and Black Fender Flares- Body-Color Grille w/Colored Accents
- Clearcoat Paint w/Badging- Deep Tinted Glass
- Full-Size Spare Tire Stored Underbody w/Crankdown- Galvanized Steel/Aluminum Panels
- Regular Box Style- Removable Rear Window- Steel Spare Wheel
- Tailgate Rear Cargo Access- Variable Intermittent Wipers

Safety

- 6-Way Driver Seat -inc: Manual Recline, Height Adjustment, Fore/Aft Movement and Manual Lumbar Support
- Front Seats w/Cloth Back Material and Manual Driver Lumbar
- Full Carpet Floor Covering -inc: Carpet Front And Rear Floor Mats
- Gauges -inc: Speedometer, Odometer, Voltmeter, Oil Pressure, Engine Coolant Temp, Tachometer, Engine Hour Meter, Trip Odometer and Trip Computer
- Power 1st Row Windows w/Driver And Passenger 1-Touch Down
- Power Door Locks w/Autolock Feature- Power Rear Windows
- Premium Cloth Low-Back Bucket Seats- Proximity Key For Push Button Start Only
- Remote Keyless Entry w/Integrated Key Transmitter, Illuminated Entry and Panic Button
- Trip Computer- 2 12V DC Power Outlets
- 2 12V DC Power Outlets and 1 120V AC Power Outlet - 2 Seatback Storage Pockets
- 4-Way Passenger Seat -inc: Manual Recline and Fore/Aft Movement
- 60-40 Folding Split-Bench Front Facing Fold Forward Seatback Premium Cloth Rear Seat
- 97 mph Maximum Speed Calibration- Air Filtration- Analog Appearance- Compass
- Cruise Control w/Steering Wheel Controls- Day-Night Rearview Mirror
- Delayed Accessory Power
- Driver And Passenger Visor Vanity Mirrors w/Driver And Passenger Illumination
- Fade-To-Off Interior Lighting- Front And Rear Map Lights
- Front Center Armrest w/Storage
- Full Floor Console w/Locking Storage, 2 12V DC Power Outlets and 1 120V AC Power Outlet
- Garage Door Transmitter- HVAC -inc: Console Ducts- Illuminated Front Cupholder
- Illuminated Rear Cupholder
- Instrument Panel Bin, Dashboard Storage, Driver / Passenger And Rear Door Bins
- Interior Trim -inc: Metal-Look Instrument Panel Insert, Metal-Look Door Panel Insert, Metal-Look Console Insert and Metal-Look Interior Accents
- Leather Steering Wheel- Locking Glove Box
- Manual Adjustable Front Head Restraints and Foldable Rear Head Restraints
- Manual Tilt/Telescoping Steering Column- Outside Temp Gauge- Perimeter Alarm
- Redundant Digital Speedometer- Sentry Key Engine Immobilizer
- Smart Device Integration- Systems Monitor- Urethane Gear Shifter Material
- Voice Activated Dual Zone Front Automatic Air Conditioning

Mechanical

- 4-Wheel Disc Brakes w/4-Wheel ABS, Front And Rear Vented Discs, Brake Assist and Hill Hold Control
- Brake Actuated Limited Slip Differential
- Class II Towing Equipment -inc: Hitch and Trailer Sway Control
- Driver Selectable Front Locking Differential- Driver Selectable Rear Locking Differential
- Transmission: 6-Speed Manual- 1200# Maximum Payload- 22 Gal. Fuel Tank
- 220 Amp Alternator- 4.10 Rear Axle Ratio- 50 State Emissions
- 650CCA Maintenance-Free Battery w/Run Down Protection- 7 Skid Plates
- Auto Locking Hubs- Electro-Hydraulic Power Assist Steering
- Engine Auto Stop-Start Feature- Engine Oil Cooler

POWERTRAIN COMPONENTS

- inc: 700 Amp Maintenance Free Battery, 240 Amp Alternator, Auxiliary Switches

\$295

BODY COLOR 3-PIECE HARD TOP

- inc: Freedom Panel Storage Bag, Rear Window Defroster, Rear Sliding Window, No Soft Top

\$2,495

COLD WEATHER GROUP

- inc: Heated Steering Wheel, Heated Front Seats

\$995

INTEGRATED OFF-ROAD CAMERA

\$595

LED LIGHTING GROUP

- inc: Daytime Running Lamps LED Accents, LED Park Turn Lamps, Front LED Fog Lamps, LED Premium Reflector Headlamps, LED Taillamps

\$1,365

REMOTE PROXIMITY KEYLESS ENTRY

\$645

SAFETY GROUP

- inc: ParkSense Rear Park Assist System, Blind Spot & Cross Path Detection

\$995

TRAILER TOW PACKAGE

- inc: Trailer Hitch Zoom, Class IV Hitch Receiver, Heavy Duty Engine Cooling, 240 Amp Alternator

\$395

QUICK ORDER PACKAGE 24R

- inc: Engine: 3.6L V6 24V VVT UPG I w/ESS, Transmission: 8-Speed Automatic (850RE)

HYDRO BLUE PEARLCOAT

\$245

Option Packages Total

\$12,815

- Engine: 3.6L V6 24V VVT UPG I w/ESS - Fox Brand Name Shock Absorbers
 - Front Active w/Driver Control Anti-Roll Bar and Rear Anti-Roll Bar
 - GVWR: 6,250 lbs w/Max Tow Package- Leading Link Front Suspension w/Coil Springs
 - Manual Transfer Case- Part-Time Four-Wheel Drive- Performance Suspension
 - Single Stainless Steel Exhaust- Trailer Wiring Harness
 - Trailing Arm Rear Suspension w/Coil Springs
-

Texas Vehicle Exchange

tveauto.com

972-242-5350

1724 Luna Road

Carrollton, TX 75006

© 2024 AutoRevo - All rights reserved. - Powered by AutoRevo