



## 2013 Chevrolet Camaro ZL1

Website Price \$39,995

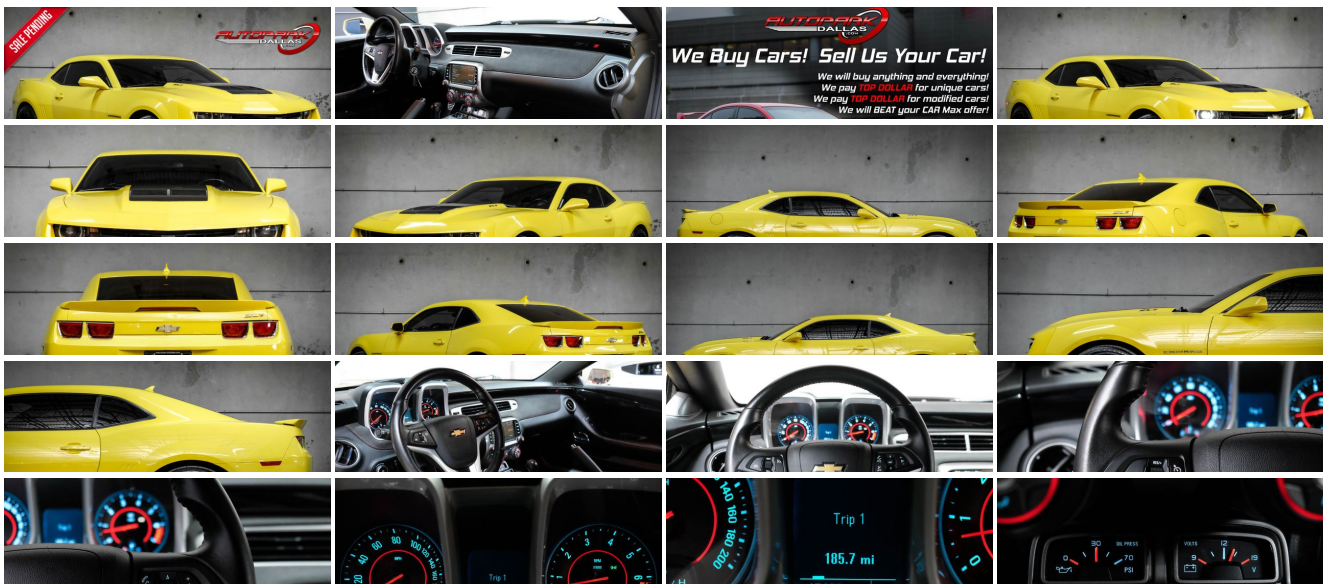
View this vehicle on our website at [autoparkdallas.com](http://autoparkdallas.com)



(214) 945-2601

2061 S Stemmons Fwy , Lewisville, TX 75067

- Photos
- Details
- Contact



## Specifications:

<b>Year:</b>	2013
<b>VIN:</b>	<a href="#">2G1FZ1EP7D9800228</a>
<b>Make:</b>	Chevrolet
<b>Model/Trim:</b>	Camaro ZL1
<b>Condition:</b>	Pre-Owned
<b>Body:</b>	Coupe
<b>Exterior:</b>	Rally Yellow
<b>Engine:</b>	ENGINE, 6.2L SUPERCHARGED V8
<b>Interior:</b>	Black Suede/Leather
<b>Transmission:</b>	TRANSMISSION, 6-SPEED MANUAL
<b>Mileage:</b>	47,165
<b>Drivetrain:</b>	Rear Wheel Drive
<b>Economy:</b>	City 12 / Highway 18

## Vehicle Description

AutoPark Dallas is thrilled to offer you this Rally Yellow 2013 Chevrolet Camaro ZL1 for sale! The Camaro ZL1 is the tip of the Chevrolet Pyramid of absolutely fun and intoxicating rides that'll transform your day to day life into a racetrack if you so desired. The hefty 6.2l V8 Supercharged Engine under the hood pushes a solid 580 horses stock, but the eye catching Rally Yellow / Black exterior combo just screams "BUMBLE BEE"! DO! NOT! HESITATE!!! If you are in search for a fun weekend warrior or just want some American Muscle, then come check out this Camaro ZL1 parked here in our indoor 16,000 Sq Ft Showroom located in Dallas , Texas amongst our inventory of 100+ other Performance / Modified and Luxury cars!

---

### 2013 Chevrolet Camaro ZL1

**\* Clean CarFax !\***

Rally Yellow Exterior

Black Leather / Suede Interior

Bluetooth

Heated Front Row Seats

Back-Up Camera

Rear Reverse Sensors

Digital Heads-Up Display

Single-Zone Air Conditioning

**\* Sport & Tour Drive Modes !\***

Factory BREMBO Brakes

Magnetic Ride Control

Boston Acoustic Sound System

Bluetooth Audio Streaming

6.2L Supercharged V8 Engine

6-Speed Manual Transmission

Rear Wheel Drive

Professionally Detailed!

Well Maintained!

**\* Free CarFax Report !\***

AND SO MUCH MORE!!!

---

# Financing is available!

Check out our Payment Calculator to get an estimate on your monthly payments!

OR

Get pre-approved in no time by filling out a credit application on the 'Finance' section of our website!

We also offer MANY different Extended Warranty options!

**Check out our Google Reviews by \*Clicking\* this LINK!**

Referrals and Testimonials is what our business is built on!

The team here at AutoPark Dallas, is dedicated to offering a level of customer service not usually found in the automobile industry. Thanks to years of extensive car buying / selling experience, we pursue quality used and new vehicles that are hand-picked from factory sources. Our love for automobiles and dislike of traditional dealership tactics is what motivates us to provide the service we do! The pride we take in continuing this service long after the vehicle has been delivered is what we strive for! Looking forward to making every effort to see that our customer is completely satisfied and a friend for life!

Pre-purchase inspections are always welcomed!

We also offer airport pick-up, competitive financing options, free CarFax Reports, Car Shipping nationwide, Extended Warranty plans, and so much more!

Trade-In(s) are always accepted or sell us your used car (MODIFIED OR NOT)! Please call or text for more information about Trade-Ins or selling your car to us @ (214) 945-2601!

## #(214) 945-2601

## Call or Text **Anytime!**

## Se habla Español

# WE BUY CARS!

## WWW.AUTOPARKDALLAS.COM

### Installed Options

#### Interior

- Air conditioning, single-zone manual- Air filtration system with pollen filter
- Coat hooks, driver- and passenger-side rear
- Compass, located in Driver Information Center- Console, floor, with armrest
- Cruise control, electronic with set and resume speed, steering wheel mounted
- Cup holders, 2 front- Dead pedal, driver- Defogger, rear-window, electric
- Door locks, power programmable with lockout protection- Floor mats, carpeted front
- Gauges, auxiliary, multi-function includes 4 gauges: boost readout, oil pressure, battery voltage and oil temperature, mounted on center console forward of shifter
- Glovebox, lockable
- Head-Up Display with digital readouts for vehicle speed, selected gear, audio system information, high-beam indicator, compass, outside air temperature, turn signals, tachometer, vehicle messages, Turn-by-Turn information and phone information (Also includes G-Force readout)
- Instrumentation, analog with Driver Information Center display, includes speedometer.

### Option Packages

#### Factory Installed Packages

ENGINE, 6.2L SUPERCHARGED V8  
(580 hp [432.5 kW] @ 6000 rpm, 556 lb-ft of torque [750.6 N-m] @ 4200 rpm)

TRANSMISSION, 6-SPEED MANUAL

HOOD INSERT, EXPOSED CARBON FIBER WEAVE  
\$600

AXLE, 3.73 RATIO

- Instrumentation, analog with Driver Information Center display, includes speedometer, tachometer, fuel gauge and engine temperature gauge
- Lighting, front reading lamps
- Lighting, interior dome with illuminated entry and theater dimming
- Map pockets, front doors- Mirror, inside rearview auto-dimming, frameless
- Pedals, alloy
- Power outlets, 2 auxiliary 1 located in center console storage area and 1 located at front of center console
- Remote Keyless Entry
- Seat adjuster, driver, 6-way power (fore/aft, up/down, tilt) with power recliner
- Seat adjuster, front passenger, 6-way power (fore/aft, up/down, tilt) with power recliner
- Seat trim, front leather-appointed with sueded microfiber inserts
- Seats, front Sport bucket includes adjustable head restraints and folding rear seat with trunk pass-through (Includes passenger-side seatback map pocket.)
- Seats, heated driver and front passenger - Shift knob, leather-wrapped
- Steering column, manual rake and telescopic
- Steering wheel, 3-spoke leather-wrapped (Flat bottom steering wheel.)
- Theft-deterrent system, PASS-Key III - Trunk release, remote, located on driver-side
- Universal Home Remote includes garage door opener, 3-channel programmable
- Visors, driver and front passenger vanity mirrors, covered
- Windows, power with driver and passenger Express-Down/Up

## Exterior

- Door handles, body-color
- Fascias, front and rear body-color, ZL1-specific with front splitter, rear diffuser and side rocker extensions
- Fog lamps- Headlamps, high intensity discharge with automatic exterior lamp control
- Hood, aluminum with carbon fiber hood insert
- Mirrors, outside heated power-adjustable and driver-side auto-dimming, body-color
- Molding, body-color roof ditch- Moldings, body-color lower rocker- Sill plate, ZL1
- Spare tire and wheel, not desired tire sealant and inflator kit in place of spare tire
- Spoiler, rear, unique- Tire sealant and inflator kit in place of spare tire
- Tires, 285/35ZR20 front and 305/35ZR20 rear, blackwall, performance summer
- Wheels, 20" x 10" (50.8 cm x 25.4 cm) front and 20" x 11" (50.8 cm x 27.9 cm) rear Black 10-spoke forged aluminum
- Wipers, front intermittent

## Safety

- Air conditioning, single-zone manual- Air filtration system with pollen filter
- Coat hooks, driver- and passenger-side rear
- Compass, located in Driver Information Center - Console, floor, with armrest
- Cruise control, electronic with set and resume speed, steering wheel mounted
- Cup holders, 2 front- Dead pedal, driver- Defogger, rear-window, electric
- Door locks, power programmable with lockout protection- Floor mats, carpeted front
- Gauges, auxiliary, multi-function includes 4 gauges: boost readout, oil pressure, battery voltage and oil temperature, mounted on center console forward of shifter
- Glovebox, lockable
- Head-Up Display with digital readouts for vehicle speed, selected gear, audio system information, high-beam indicator, compass, outside air temperature, turn signals, tachometer, vehicle messages, Turn-by-Turn information and phone information (Also includes G-Force readout)
- Instrumentation, analog with Driver Information Center display, includes speedometer, tachometer, fuel gauge and engine temperature gauge
- Lighting, front reading lamps
- Lighting, interior dome with illuminated entry and theater dimming
- Map pockets, front doors- Mirror, inside rearview auto-dimming, frameless
- Pedals, alloy
- Power outlets, 2 auxiliary 1 located in center console storage area and 1 located at front of center console
- Remote Keyless Entry
- Seat adjuster, driver, 6-way power (fore/aft, up/down, tilt) with power recliner
- Seat adjuster, front passenger, 6-way power (fore/aft, up/down, tilt) with power recliner
- Seat trim, front leather-appointed with sueded microfiber inserts
- Seats, front Sport bucket includes adjustable head restraints and folding rear seat with trunk pass-through (Includes passenger-side seatback map pocket.)
- Seats, heated driver and front passenger - Shift knob, leather-wrapped
- Steering column, manual rake and telescopic
- Steering wheel, 3-spoke leather-wrapped (Flat bottom steering wheel.)
- Theft-deterrent system, PASS-Key III - Trunk release, remote, located on driver-side
- Universal Home Remote includes garage door opener, 3-channel programmable
- Visors, driver and front passenger vanity mirrors, covered
- Windows, power with driver and passenger Express-Down/Up

## EMISSIONS, FEDERAL REQUIREMENTS

### RALLY YELLOW

(Additional charge - premium paint.)

\$395

### STANDARD PAINT

### ZL1 PREFERRED EQUIPMENT GROUP

includes Standard Equipment

### AUDIO SYSTEM, 7" DIAGONAL COLOR TOUCH SCREEN DISPLAY AM/FM STEREO

### BLACK, FRONT LEATHER-APPOINTED WITH SUEDED MICROFIBER INSERTS

### SEATS, FRONT SPORT BUCKET

includes adjustable head restraints and folding rear seat with trunk pass-through

### WHEELS, 20" X 10" (50.8 CM X 25.4 CM) FRONT AND 20" X 11" (50.8 CM X 27.9 CM) REAR BLACK 10-SPOKE FORGED ALUMINUM

### Option Packages Total

\$995

## Mechanical

- Alternator, 155 amps- Axle, 3.73 ratio
- Battery, maintenance-free with rundown protection and retained accessory power
- Brakes, 4-wheel antilock, 4-wheel disc, Brembo performance 6 piston front and 4 piston rear brakes
- Brakes, Brembo- Differential, limited slip
- Engine, 6.2L supercharged V8 (580 hp [432.5 kW] @ 6000 rpm, 556 lb-ft of torque [750.6 N-m] @ 4200 rpm)
- Exhaust, dual-mode, performance- Magnetic ride control- Rear wheel drive
- Steering, power, variable ratio, electric- Suspension, Performance Ride and Handling
- Transmission, 6-speed manual

# AUTOPARK

## Dallas

Auto Park Dallas

View this car on our website at [autoparkdallas.com/6950861](http://autoparkdallas.com/6950861)

Website: [autoparkdallas.com](http://autoparkdallas.com)

Phone: (214) 945-2601

Map: 2061 S Stemmons Fwy, Lewisville, TX 75067

