

139 W Main St  
 Branford, CT 06405

# 2017 Chevrolet Express Cargo Van

**Eric Zuwalick**

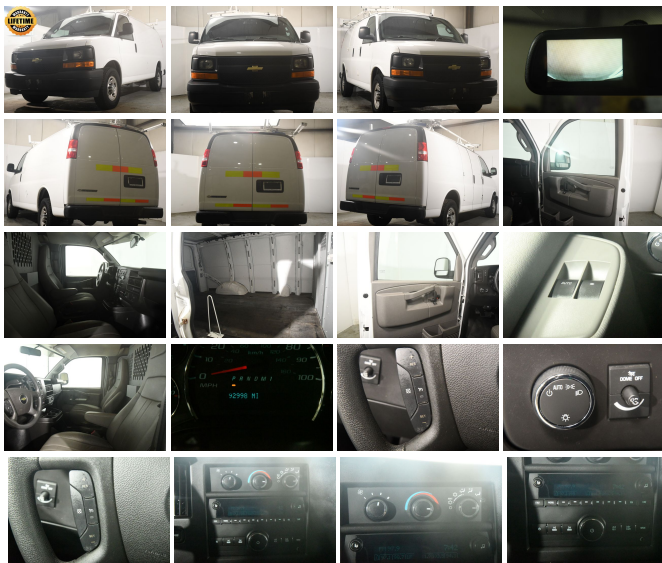
View this car on our website at [soundautowholesalers.com/6950773/ebrochure](http://soundautowholesalers.com/6950773/ebrochure)



No-Haggle Price **\$21,999**

## Specifications:

<b>Year:</b>	2017
<b>VIN:</b>	1GCWGAFF1H1351478
<b>Make:</b>	Chevrolet
<b>Stock:</b>	4371
<b>Model/Trim:</b>	Express Cargo Van
<b>Condition:</b>	Pre-Owned
<b>Body:</b>	Minivan/Van
<b>Exterior:</b>	Summit White
<b>Engine:</b>	ENGINE, VORTEC 4.8L V8 SFI
<b>Interior:</b>	Medium Pewter Leather
<b>Mileage:</b>	92,998
<b>Drivetrain:</b>	Rear Wheel Drive



FREE LIFETIME POWERTRAIN WARRANTY (See Website for Complete Details - not available on Range Rover, Porsche or vehicles with over 100,000 miles). Dan Merriam's Sound Auto Wholesalers is A PLUS RATED by the Better Business Bureau -HIGHEST RATING POSSIBLE. Every vehicle is VALUE PRICED & SOUND AUTO CERTIFIED. CLICK ON THE {CARVANA? CARMAX?} TAB TO SEE HOW WE PROVIDE MORE VALUE AND CONVENIENCE THAN THE NATIONAL COMPETITORS.

2017 Chevrolet Express Cargo Van

Sound Auto Wholesalers - - View this car on our website at [soundautowholesalers.com/6950773/ebrochure](http://soundautowholesalers.com/6950773/ebrochure)

## Vehicle History Report : as Of 06/16/2021

 Snapshot

2017 CHEVROLET EXPRESS G2500

	No accidents or damage reported to CARFAX
	2 Previous owners
	17 Service history records
	Types of owners: Commercial, Lease
	Last owned in Texas
	93,007 Last reported odometer reading



**FREE CARFAX Report**

See the full CARFAX Report for additional information

\*carfax Snapshot is a reflection of available information on the date the report was pulled. carfax is constantly being updated with new information and is subject to change at any time.

## Our Location :



## 2017 Chevrolet Express Cargo Van

Sound Auto Wholesalers - - View this car on our website at [soundautowholesalers.com/6950773/ebrochure](http://soundautowholesalers.com/6950773/ebrochure)

## Installed Options

### Interior

- Air conditioning, single-zone manual- Assist handles, driver and right-front passenger
- Cargo tie-downs 6 D-ring attachments on cargo area floor (Not available with (Y3H) Paratransit Package, (5BV) Upfitter electrical provisions, (5L3) interior trim panel or (ZP6) 5-passenger Express Crew Van.)
- Console, engine cover with open storage bin
- Cup holders, 3 on the engine console cover - Defogger, side windows
- Door locks, power with lock-out protection (Included with (ZQ2) convenience Package. NOTE: Does not include (ATG) Remote Keyless Entry. (ATG) Remote Keyless Entry must be ordered separately.)
- Driver Information Center includes fuel range, average speed, oil life, tire pressure monitoring, fuel used, ice warning, engine hours, average fuel economy, tachometer, and maintenance reminders. Compass and outside temperature available if equipped.
- Floor covering, full-length Black rubberized-vinyl (Not available with (RFM) rear floor covering delete, (5BV) Upfitter electrical or (PCH) Hotel Shuttle Package.)
- Headliner, cloth, over driver and passenger
- Instrumentation, analog with speedometer, odometer with trip odometer, fuel level, voltmeter, engine temperature and oil pressure
- Lighting, interior with 4 dome lights 1 overhead and 3 LED's on cross members in cargo area, includes defeat switch and door handle-activated switches
- Oil life monitor- Power outlet, 120-volt
- Power outlets, 2 auxiliary on engine console cover with covers, 12-volt
- Seating arrangement, driver and front passenger high-back buckets with head restraints and vinyl or cloth trim (Not available with (AJ3) driver-side only frontal air bag.)
- Seats, front bucket with vinyl trim and outboard head restraints, includes inboard armrests. (Requires (\*\*W) interior trim. Includes (DAA) driver and front passenger vinyl visors.)
- Steering wheel, steel sleeve column with theft-deterrent locking feature, Black
- Theft-deterrent system, vehicle, PASS-Key III
- Tow/haul mode selector, instrument panel-mounted
- Trim panels, hinged rear side doors and hinged rear doors (Not available with (Y3H) Paratransit Package.)

- visors, driver and front passenger, cloth, padded
- Warning tones, headlamp on and key-in-ignition
- Windows, power (Included with (ZQ2) Convenience Package.)

## Exterior

- Bumpers, front and rear painted Black with step-pad (Deleted when (ZR7) Chrome Appearance Package is ordered.)
- Door, swing-out passenger-side, 60/40 split - Glass, Solar-Ray light-tinted, all windows
- Grille, Black composite with single rectangular halogen headlamps (Not available with (ZR7) Chrome Appearance Package.)
- Headlamps, single halogen (Not available with (ZR7) Chrome Appearance Package.)
- License plate kit, front- Mirrors, outside manual, Black
- Tire, spare LT245/75R16E all-season, blackwall located at rear underbody of vehicle
- Tires, front LT245/75R16E all-season, blackwall
- Tires, rear LT245/75R16E all-season, blackwall
- Wheels, 4 - 16" x 6.5" (40.6 cm x 16.5 cm) steel includes Gray center caps and steel spare
- Wipers, front intermittent wet-arm with pulse washers

## Safety

- Air conditioning, single-zone manual- Assist handles, driver and right-front passenger
- Cargo tie-downs 6 D-ring attachments on cargo area floor (Not available with (Y3H) Paratransit Package, (5BV) Upfitter electrical provisions, (5L3) interior trim panel or (ZP6) 5-passenger Express Crew Van.)
- Console, engine cover with open storage bin
- Cup holders, 3 on the engine console cover - Defogger, side windows
- Door locks, power with lock-out protection (Included with (ZQ2) convenience Package. NOTE: Does not include (ATG) Remote Keyless Entry. (ATG) Remote Keyless Entry must be ordered separately.)
- Driver Information Center includes fuel range, average speed, oil life, tire pressure monitoring, fuel used, ice warning, engine hours, average fuel economy, tachometer, and maintenance reminders. Compass and outside temperature available if equipped.
- Floor covering, full-length Black rubberized-vinyl (Not available with (RFM) rear floor covering delete, (5BV) Upfitter electrical or (PCH) Hotel Shuttle Package.)
- Headliner, cloth, over driver and passenger
- Instrumentation, analog with speedometer, odometer with trip odometer, fuel level, voltmeter, engine temperature and oil pressure
- Lighting, interior with 4 dome lights 1 overhead and 3 LED's on cross members in cargo area, includes defeat switch and door handle-activated switches
- Oil life monitor- Power outlet, 120-volt
- Power outlets, 2 auxiliary on engine console cover with covers, 12-volt
- Seating arrangement, driver and front passenger high-back buckets with head restraints and vinyl or cloth trim (Not available with (AJ3) driver-side only frontal air bag.)
- Seats, front bucket with vinyl trim and outboard head restraints, includes inboard armrests. (Requires (\*\*W) interior trim. Includes (DAA) driver and front passenger vinyl visors.)
- Steering wheel, steel sleeve column with theft-deterrent locking feature, Black
- Theft-deterrent system, vehicle, PASS-Key III
- Tow/haul mode selector, instrument panel-mounted
- Trim panels, hinged rear side doors and hinged rear doors (Not available with (Y3H) Paratransit Package.)
- Visors, driver and front passenger, cloth, padded
- Warning tones, headlamp on and key-in-ignition
- Windows, power (Included with (ZQ2) Convenience Package.)

## Mechanical

- Alternator, 105 amps (Not available with (Y3H) Paratransit Package or (LWN) 2.8L Duramax Turbo Diesel engine.)
- Battery, 600 cold-cranking amps, maintenance-free with rundown protection and retained accessory power
- Body, standard- Brakes, 4-wheel antilock, 4-wheel disc
- Engine, Vortec 4.8L V8 SFI (285 hp [212.5 kW] @ 5400 rpm, 295 lb-ft of torque [398.3 N-m] @ 4600 rpm) (Includes external engine oil cooler. Reference the Engine/Axle page for availability.)
- Exhaust, aluminized stainless-steel muffler and tailpipe- Frame, full-length box ladder-type
- Fuel tank capacity, mid-frame and approximately 31 gallons (117.3L)
- GVWR, 8600 lbs. (3901 kg) (Reference the Engine/Axle page for availability.)
- Rear axle, 3.42 ratio (Reference the Engine/Axle page for availability.) - Rear wheel drive
- Steering, power- Suspension, front independent with coil springs and stabilizer bar
- Suspension, rear hypoid drive axle with multi-leaf springs
- Transmission oil cooler, external (Deleted when (LWN) 2.8L Duramax Turbo Diesel engine is ordered.)
- Transmission, 6-speed automatic, heavy-duty, electronically controlled with overdrive tow/haul mode and internal transmission oil cooler (Reference the Engine/Axle page for availability.)

## Option Packages

### Factory Installed Packages

-  
ENGINE, VORTEC 4.8L V8 SFI  
(285 hp [212.5 kW] @ 5400 rpm,  
295 lb-ft of torque [398.3 N-m]  
@ 4600 rpm)

-  
SUMMIT WHITE

Prices do not include sales tax, registration fees and dealer conveyance fee of 699. If you have a trade-in your sales tax will be reduced based on the difference between the car you are purchasing and your trade-in. Final credit decisions are made by lenders.

---

Sound Auto Wholesalers  
[soundautowholesalers.com](http://soundautowholesalers.com)  
139 W Main St  
Branford, CT 06405

© 2021 AutoRevo - All rights reserved. - Powered by [AutoRevo](#)