

2002 Ford Super Duty F-250 Lariat

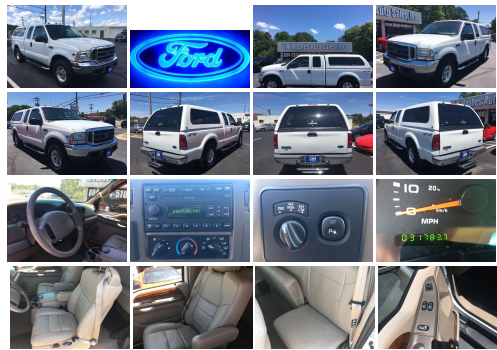
View this car on our website at tkhughesauto.com/6947996/ebrochure



Our Price **\$25,700**

Specifications:

| | |
|----------------------|--|
| Year: | 2002 |
| VIN: | 1FTNX21SX2EB82180 |
| Make: | Ford |
| Stock: | 5664 |
| Model/Trim: | Super Duty F-250 Lariat |
| Condition: | Pre-Owned |
| Body: | Pickup Truck |
| Exterior: | Oxford White |
| Engine: | 6.8L (415) SOHC SEFI V10 ENGINE |
| Interior: | Tan Leather |
| Transmission: | HD 4-SPEED AUTOMATIC TRANSMISSION W/OD |
| Mileage: | 31,771 |
| Drivetrain: | 4 Wheel Drive |



Great Miles, Excellent Condition, Free Carfax! TK Hughes Auto Sales, Inc in Business Since 1975! Better Business Bureau Rating AAA+!

TK Hughes Auto Sales, Inc
 8301 Brook Rd
 Richmond, VA 23227
 Since 1975!

2002 Ford Super Duty F-250 Lariat

TK HUGHES - 804-264-5100 - View this car on our website at tkhughesauto.com/6947996/ebrochure

Vehicle History Report : as Of 05/10/2021

CARFAX
Snapshot

2002 FORD F250 SUPER DUTY

- Accident reported
- 2 Previous owners
- 11 Service history records
- Personal vehicle
- Last owned in Virginia
- 31,782 Last reported odometer reading

FREE CARFAX Report

See the full CARFAX Report for additional information

*carfax Snapshot is a reflection of available information on the date the report was pulled. carfax is constantly being updated with new information and is subject to change at any time.

Our Location :



2002 Ford Super Duty F-250 Lariat

TK HUGHES - 804-264-5100 - View this car on our website at tkhughesauto.com/6947996/ebrochure

Installed Options

Interior

- (4) air registers w/positive shut-off- 11.5" day/night mirror- 6-way pwr driver seat
- Accessory delay
- Advanced security group-inc: auto lamp, auto lock, remote keyless entry - Air conditioning
- Auxiliary pwr point- Belt Minder seatbelt-not-buckled chime & flashing warning light
- Color-keyed carpet full-floor covering- Color-keyed carpeted floor mats
- Color-keyed instrument panel w/dual cupholders/glove box/ashtray/cigar lighter
- Color-keyed leather-wrapped steering wheel- Color-keyed molded cloth headliner
- Color-keyed molded door trim panel-inc: soft armrest, grab handle,reflector, upper vinyl insert, carpeted map pocket
- Color-keyed scuff plates- Driver & front passenger manual lumbar support
- Dual color-keyed cloth sunvisors w/secondary blades-inc: driver-side map strap, dual covered lighted mirrors
- Dual color-keyed coat hooks- Front door operated dome lamp w/time delay off
- Front passenger grab handle- Front passenger-side roof ride handle
- Grey fabric back panel cover- Inside hood release
- Instrumentation-inc: tachometer, trip odometer, voltmeter, oil pressure/ coolant temp/fuel gauges, indicator lights
- Nudo leather 40/20/40 split front bench seat-inc: armrest, cup holders, storage, outboard headrests
- Overhead console-inc: trip computer w/compass, DTE, average fuel economy & outside temp, garage door opener, sunglass bin
- Premium electronic AM/FM stereo radio w/cassette, single CD player-inc: digital clock, premium sound w/amplifier, (4) speakers
- Pwr door locks w/backlit switches- Pwr windows w/driver one-touch-down/backlit switches
- Rear door map pockets w/integrated "closed containers only" cupholders - Speed control
- Tilt steering column- Underhood service light
- Vinyl fold-up rear bench seat-inc: underseat storage net

Exterior

- Argent box-rail/taillgate moldings- Argent grille w/chrome surround- Black door handles
- Black fold-away pwr mirrors- Chrome front bumper w/lower center trim
- Chrome rear step bumper- Color-keyed body-side moldings- Dual rear access doors
- Flip-out rear quarter windows- Fog lamps- Front/rear license plate bracket
- Interval wipers- Molded black cab steps- Pickup box/cargo light
- Rear quarter window/rear window privacy glass
- Removable locking tailgate w/black handle- Single beam jewel effect headlamps
- Sliding rear window- Solar tinted windshield/front door glass- Valance air dam

Safety

- (4) air registers w/positive shut-off- 11.5" day/night mirror- 6-way pwr driver seat
- Accessory delay
- Advanced security group-inc: auto lamp, auto lock, remote keyless entry - Air conditioning
- Auxiliary pwr point- Belt Minder seatbelt-not-buckled chime & flashing warning light
- Color-keyed carpet full-floor covering- Color-keyed carpeted floor mats
- Color-keyed instrument panel w/dual cupholders/glove box/ashtray/cigar lighter
- Color-keyed leather-wrapped steering wheel- Color-keyed molded cloth headliner
- Color-keyed molded door trim panel-inc: soft armrest, grab handle,reflector, upper vinyl insert, carpeted map pocket
- Color-keyed scuff plates- Driver & front passenger manual lumbar support
- Dual color-keyed cloth sunvisors w/secondary blades-inc: driver-side map strap, dual covered lighted mirrors
- Dual color-keyed coat hooks- Front door operated dome lamp w/time delay off
- Front passenger grab handle- Front passenger-side roof ride handle
- Grey fabric back panel cover- Inside hood release
- Instrumentation-inc: tachometer, trip odometer, voltmeter, oil pressure/ coolant temp/fuel gauges, indicator lights
- Nudo leather 40/20/40 split front bench seat-inc: armrest, cup holders, storage, outboard headrests
- Overhead console-inc: trip computer w/compass, DTE, average fuel economy & outside temp, garage door opener, sunglass bin
- Premium electronic AM/FM stereo radio w/cassette, single CD player-inc: digital clock, premium sound w/amplifier, (4) speakers
- Pwr door locks w/backlit switches- Pwr windows w/driver one-touch-down/backlit switches
- Rear door map pockets w/integrated "closed containers only" cupholders - Speed control
- Tilt steering column- Underhood service light
- Vinyl fold-up rear bench seat-inc: underseat storage net

Mechanical

- (2) front tow hooks- (4) 16" x 7.0" premium aluminum wheels w/bright center ornaments
- (5) LT265/75R16E all-season SBR BSW tires- 130 amp alternator- 142" WB
- 2-speed transfer case- 29 gallon fuel tank- 3.73 axle ratio
- 5.4L (330) SOHC SEFI V8 engine
- 6-3/4' pickup box w/tie-down hooks & partitionable/stackable storage
- 6-speed manual transmission w/OD- 78 amp/hr (750 CCA) maintenance-free battery
- 8,800# GVWR (4700 front/6084 rear), springs (4700 front/6084 rear), axles (5200 front/6084 rear)
- Auxiliary rear springs "Activated when carrying heavy loads" - Four wheel drive
- Front stabilizer bar- Full-size spare tire w/steel wheel, lock, underframe crank carrier
- HD gas shock absorbers - Manual locking front hubs - Mono-beam front axle
- Pwr 4-wheel disc brakes w/4-wheel anti-lock system- Pwr steering
- Trailer tow pkg-inc: 7-wire harness, trailer brake wiring kit, trailer tow guide

<p style="text-align: center;">
T.K. HUGHES AUTO SALES, INC

ESTABLISHED IN1975 </p><p style="text-align: center;">

≈≈≈≈≈≈≈</p>

