

2011 FORD F450 FX4 LARIAT CREW CAB 6.7L POWERSTROKE DIESEL BONE STOCK !

View this car on our website at njtruckking.com/6947658/ebrochure



Our Price **\$43,900**

Specifications:

Year:	2011
VIN:	1FT8W4DT1BEB55059
Make:	FORD F450 FX4 LARIAT
Model/Trim:	CREW CAB 6.7L POWERSTROKE DIESEL BONE STOCK !
Condition:	Pre-Owned
Body:	Pickup Truck
Exterior:	White
Engine:	6.7L 32-VALVE POWER STROKE V8 DIESEL ENGINE
Interior:	Tan Leather
Mileage:	106,992
Drivetrain:	4 Wheel Drive

DONT MISS IT!

! THIS TRUCK WILL NOT LAST LONG !

~F450~

2011 FORD F450 DRW 4X4

LARIAT

ALL THE OPTIONS

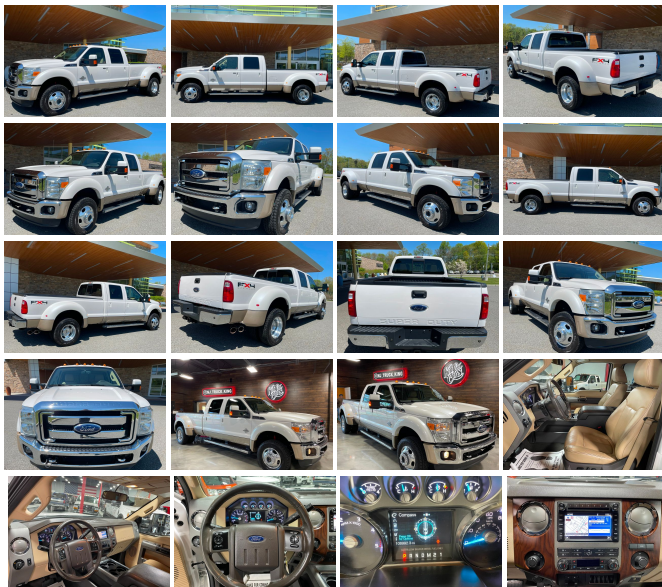
6.7L POWERSTROKE TURBO DIESEL

AUTOMATIC TRANSMISSION

(106,992 ORIGINAL / ACTUAL MILES)

ONE OWNER

CLEAN CARFAX



ORIGINAL OWNERS MANUALS

ORIGINAL WINDOW STICKER !

100% BONE STOCK

READY TO WORK

REMOTE START

BED LINER

THIS TRUCK IS IN PRISTINE CONDITION !

DONT MISS IT!

\$43,900

CALL / TEXT AARON 856-693-9370 WITH ANY QUESTIONS

2011 FORD F450 FX4 LARIAT CREW CAB 6.7L POWERSTROKE DIESEL BONE STOCK !

King of Cars and Trucks - 856-693-3181 - View this car on our website at njtruckking.com/6947658/ebrochure

Our Location :



2011 FORD F450 FX4 LARIAT CREW CAB 6.7L POWERSTROKE DIESEL BONE STOCK !

King of Cars and Trucks - 856-693-3181 - View this car on our website at njtruckking.com/6947658/ebrochure

Installed Options

Option Packages

Interior

- (2) aux pwr outlets in instrument panel - 10-way pwr driver & front passenger seats
- 110V/150W inverter aux pwr outlet in rear console
- 60/40 flip-up/fold-down rear split bench seat -inc: dual cupholders in armrest, underseat partitioned lockable storage w/aux pwr outlet, (3) head restraints
- Color-coordinated leather-wrapped steering wheel w/audio & SYNC controls
- Electrochromic rearview mirror w/compass- Front/rear color-keyed carpeted floor mats
- Front/rear map lamps
- Premium leather 40/console/40 front seats -inc: monotone leather insert, (2) aux pwr outlets in console
- Pwr adjustable pedals
- Pwr door locks w/backlit switches, autolock & auto unlock, SecuriCode keyless entry keypad
- Pwr windows w/driver one-touch-down & backlit switches
- Remote keyless entry & perimeter anti-theft alarm - (4) air registers w/positive shut-off
- 3-blink lane change signal- Accessory delay- Color-keyed carpet full-floor covering
- Color-keyed cloth headliner -inc: integrated SYNC microphone
- Color-keyed door trim panel -inc: soft armrest, grab handle, reflector, dark foundry upper applique, upper & lower map pockets
- Color-keyed scuff plates- Cruise control- Dash-top tray
- Driver & front passenger grab handles- Dual color-keyed coat hooks
- Dual color-keyed vinyl sunvisors-inc: driver-side map strap, dual covered lighted mirrors
- Dual zone electronic automatic temperature control (DEATC)
- Front door operated dome lamp w/time delay off & IP switch
- Front passenger-side roof ride handle- Glove box
- Instrument panel mounted dual cupholders
- Instrument panel mounted storage bin & trash bag hook - Intelligent oil life minder
- LCD productivity screen -inc: driver configurable enhanced information 4.2" display, menus for gauge setup, trip computer, fuel economy, towing/off-road applications, (5) button message control on steering wheel
- Overhead console -inc: storage bins for garage door opener & sunglasses
- Rear armrests w/cupholders- Rear seating roof ride handles- Secondary glove box
- SecuriLock anti-theft ignition- Tilt/telescoping steering column

Exterior

- (7) LT245/75R17E all-season BSW tires- 5" chrome tubular step bars
- Full-size spare tire w/lock & carrier
- PowerScope heated pwr telescoping & folding trailer tow mirrors -inc: turn signals, integrated clearance lights, heated convex spotter mirror
- Pwr sliding rear window
- 17" forged polished aluminum wheels -inc: bright center ornaments
- Autolamp/rainlamp dual beam halogen headlamps- Body-color door handles
- Box-rail & tailgate top-edge moldings- Chrome front bumper w/grained top cover
- Chrome rear bumper- Fog lamps- Front fender vents- Front/rear license plate brackets
- Grille w/medium platinum insert & chrome surround - Interval windshield wipers
- Pickup box/cargo lights- Rear privacy glass
- Removable locking tailgate w/black handle & TailGate Assist - Roof clearance lights
- Solar tinted glass- Underhood service light

Safety

- (2) aux pwr outlets in instrument panel - 10-way pwr driver & front passenger seats
- 110V/150W inverter aux pwr outlet in rear console
- 60/40 flip-up/fold-down rear split bench seat -inc: dual cupholders in armrest, underseat partitioned lockable storage w/aux pwr outlet, (3) head restraints
- Color-coordinated leather-wrapped steering wheel w/audio & SYNC controls
- Electrochromic rearview mirror w/compass- Front/rear color-keyed carpeted floor mats
- Front/rear map lamps
- Premium leather 40/console/40 front seats -inc: monotone leather insert, (2) aux pwr outlets in console
- Pwr adjustable pedals
- Pwr door locks w/backlit switches, autolock & auto unlock, SecuriCode keyless entry keypad
- Pwr windows w/driver one-touch-down & backlit switches
- Remote keyless entry & perimeter anti-theft alarm - (4) air registers w/positive shut-off
- 3-blink lane change signal- Accessory delay- Color-keyed carpet full-floor covering
- Color-keyed cloth headliner -inc: integrated SYNC microphone
- Color-keyed door trim panel -inc: soft armrest, grab handle, reflector, dark foundry upper applique, upper & lower map pockets
- Color-keyed scuff plates- Cruise control- Dash-top tray
- Driver & front passenger grab handles- Dual color-keyed coat hooks
- Dual color-keyed vinyl sunvisors-inc: driver-side map strap, dual covered lighted mirrors

Factory Installed Packages

6.7L 32-VALVE POWER STROKE V8 DIESEL ENGINE

- inc: diesel emission fluid system, engine exhaust braking in tow/haul mode

- Dual color-keyed vinyl sunvisors-inc. driver-side map strap, dual covered lighted mirrors
- Dual zone electronic automatic temperature control (DEATC)
- Front door operated dome lamp w/time delay off & IP switch
- Front passenger-side roof ride handle- Glove box
- Instrument panel mounted dual cupholders
- Instrument panel mounted storage bin & trash bag hook - Intelligent oil life minder
- LCD productivity screen -inc: driver configurable enhanced information 4.2" display, menus for gauge setup, trip computer, fuel economy, towing/off-road applications, (5) button message control on steering wheel
- Overhead console -inc: storage bins for garage door opener & sunglasses
- Rear armrests w/cupholders- Rear seating roof ride handles- Secondary glove box
- SecuriLock anti-theft ignition- Tilt/telescoping steering column

Mechanical

- (2) front tow hooks- 17.5K trailer hitch receiver -inc: 2.5" hitch & 2" reducer sleeve
- 4.30 axle ratio w/limited slip rear axle
- TorqShift 6-speed automatic transmission w/tow/haul mode- 157-amp HD alternator
- 4-ton hydraulic jack- 4-wheel drive
- 6.7L 32-valve Power Stroke V8 diesel engine -inc: diesel emission fluid system, engine exhaust braking in tow/haul mode
- 78 amp/hr (750 CCA) dual batteries
- 8' pickup box -inc: (6) tie-down hooks, partitionable & stackable storage
- Electric shift-on-the-fly transfer case -inc: manual-locking front hubs, instrument panel auto rotary control
- Front stabilizer bar- HD gas shock absorbers
- Mono-beam wide track front suspension w/extended axle
- Pwr 4-wheel disc brakes w/hydro-boost- Pwr steering w/steering damper
- Stationary elevated engine idle control (SEIC)
- Trailer brake controller *Compatible w/select electric over hydraulic brakes*
- Trailer tow pkg -inc: 7-wire harness w/relays, 7/4 pin combination connector
- Transmission pwr take-off provision -inc: transmission-mounted live drive, stationary mode PTO

King of Cars and Trucks

njtruckking.com

856-693-3181

1229 Broadway

Westville, New Jersey 08093

© 2024 AutoRevo - All rights reserved. - Powered by AutoRevo