

2010 Chevrolet Camaro 2SS Supercharged with Many Upgrades

View this car on our website at rpmgaragetx.com/6944879/ebrochure

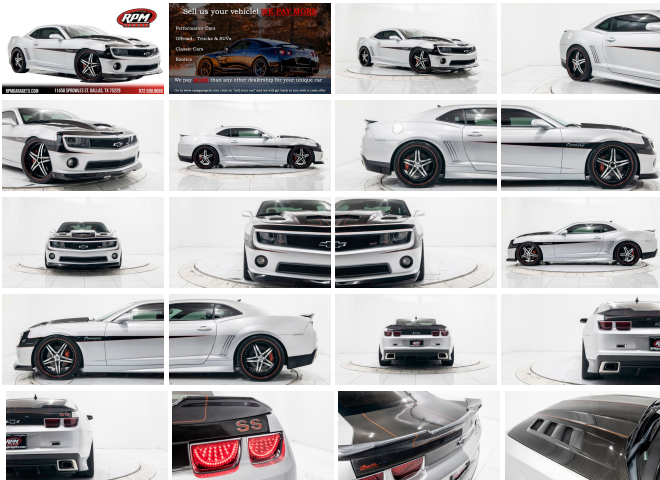


Our Price **\$28,991**

Specifications:

Year:	2010
VIN:	2G1FK1EJ4A9144260
Make:	Chevrolet
Model/Trim:	Camaro 2SS Supercharged with Many Upgrades
Condition:	Pre-Owned
Body:	Coupe
Exterior:	Silver
Engine:	ENGINE, 6.2L V8 SFI
Interior:	Red Leather
Transmission:	TRANSMISSION, 6-SPEED AUTOMATIC
Mileage:	32,220
Drivetrain:	Rear Wheel Drive
Economy:	City 16 / Highway 25

RPMGARAGETX.COM 11450 SPROWLES ST. DALLAS, TX 75229 972.590.8689



RPM Garage is a specialty car dealership conveniently located off I-35E in Dallas, Texas. With over 100 cars in stock, and new inventory arriving every day, we offer a wide variety of quality vehicles to make your dreams come true. Make sure to stop by and check out our BRAND NEW 40,000 sq/ft warehouse and take your dream car home TODAY!

LET US FINANCE
YOUR DREAMS!
CLICK HERE TO
BEGIN!

We are proud to offer you this 2010 Chevrolet Camaro 2SS Supercharged with Many Upgrades for sale!

This 2010 Chevrolet Camaro 2SS is part of the first generation of the reborn iconic American muscle car. Powered by a supercharged 6.2-liter V8 engine that produces over 500 horsepower and 450 lb-ft. of torque, making it incredibly fun to drive at all times. A supercharger isn't the only change that's been made however, as this engine has also been fitted with a performance blower to increase airflow to the supercharger, as well as long-tube headers and pulleys, among other changes. This powerful engine is mated to a six-speed automatic transmission that delivers the power smoothly and quickly to the road for immediate acceleration and a more comfortable day-to-day driving experience. Clearly, then, this car is a ready-to-go performance car that truly is one of a kind.

To us, what's outside the engine bay is just as important as what's inside it, and this aggressive Camaro 2SS is no exception to this rule. This custom muscle car comes equipped with aftermarket 22" Lexani wheels, lowered on coilover suspension, and is finished with a completely custom silver and black paint scheme, an attention-getting and exciting pattern that matches the personality of the rest of the car. This car also has an extreme number of carbon-fiber hydro-dipping and wrapped accent pieces, including the hood, trunk decklid, and almost every trim piece under the hood, along with the battery case and a few other components. This car also has a custom airbrushed engine cover and decal on the

bottom of the hood,
completing the unique paint work that has been
done to this muscle car. This Camaro 2SS is
completely one of a kind, and it's unlikely that
there will ever be anything quite like it on the
market.

LIST OF FEATURES & UPGRADES:

Supercharged 6.2-Liter V8 Engine

6-Speed Automatic Transmission

Aftermarket Supercharger

Performance Blower

Long-Tube Headers

Innovators West Harmonic Balancer

Dual-Exit Performance Exhaust

Aftermarket Pulleys

Cold-Air Inductions Cold-Air Intake

Aftermarket Coilover Suspension

22" Lexani Wheels

Custom Paint Scheme

Aftermarket Carbon Fiber Hood

Carbon Fiber Decklid

Aftermarket Front Grill

Ducktail Spoiler

Pillar-Mounted Cobalt Boost and Air-Fuel Ratio
Gauges

Alpine Infotainment with Bluetooth, Rear
Camera, Phone Connect

Boston Audio Premium Speakers with Alpine
Subwoofer

"SS" Stitched Leather Bucket Seats

Custom-Finished Interior Trim Pieces

Leather Steering Wheel with Paddles

And Much More!

This low-mileage, iconic piece of reborn
American performance is

American performance is every bit as iconic as it was when the original Camaro first hit the market, making it a perfect car to take home today!

MSRP + Mods \$55,000+ | RPM Price \$28,991

At RPM Garage we love taking care of our customers and we are all about building a relationship with our clients to continue helping them in each and every one of their car needs for years to come. Become a part of our family and visit our showroom today!

We offer free airport pick-up, extended warranties, worldwide shipping, and much more! We welcome third party inspections! We love **TRADE-INS!!**

EXCELLENT FINANCING OPTIONS!

CONTACT OUR SALES TEAM AT:

972-590-8689

sales@rpmgaragetx.com

www.rpmgaragetx.com

CLICK HERE TO SELL US YOUR CAR!

We would love to buy your car. Click the text above ^^ to get an appraisal quote as soon as possible on your car, we would love to check it out. Whether you buy a car from us or not, we

will still pay more for it than nearly any other dealership!

HOURS OF OPERATION:

Monday - Friday: 10AM - 6PM | Saturday:
10AM - 5PM | Sunday: Closed

2010 Chevrolet Camaro 2SS Supercharged with Many Upgrades

RPM Garage - 972-590-8689 - View this car on our website at rpmgaragetx.com/6944879/ebrochure

Vehicle History Report : as Of 06/17/2021

 Snapshot

2010 CHEVROLET CAMARO SS/2SS

	No accidents or damage reported to CARFAX
	3 Previous owners
	21 Service history records
	Personal vehicle
	Last owned in Texas
	32,220 Last reported odometer reading



FREE CARFAX Report

See the full CARFAX Report for additional information

*carfax Snapshot is a reflection of available information on the date the report was pulled. carfax is constantly being updated with new information and is subject to change at any time.

Our Location :



2010 Chevrolet Camaro 2SS Supercharged with Many Upgrades

RPM Garage - 972-590-8689 - View this car on our website at rpmgaragetx.com/6944879/ebrochure

Installed Options

Interior

- Air conditioning, single-zone manual- Air filtration system with pollen filter
- Cargo convenience net- Coat hooks, driver- and passenger-side rear
- Compass, located in Driver Information Center- Console, floor, with armrest
- Cruise control, electronic with set and resume speed, steering wheel mounted
- Cup holders, 2 front- Dead pedal, driver- Defogger, rear-window, electric
- Door locks, power programmable with lockout protection- Floor mats, carpeted front
- Gauges, auxiliary, multi-function includes 4 gauges: oil pressure, battery voltage, oil temperature and transmission fluid temperature, mounted on center console forward of shifter
- Glovebox, lockable
- Instrumentation, analog with Driver Information Center display and SS detail, includes

- speedometer, tachometer, fuel gauge and engine temperature gauge
- Lighting, front reading lamps
- Lighting, interior dome with illuminated entry and theater dimming
- Map pockets, front doors- Mirror, inside rearview autodimming
- Power outlets, 2 auxiliary 1 located in center console storage area and 1 located at front of center console
- Remote Keyless Entry
- Seat adjuster, driver, 6-way power (fore/aft, up/down, tilt) with power recliner
- Seat adjuster, front passenger 2-way manual (fore/aft) with power recliner
- Seat trim, leather-appointed front seats- Seats, heated driver and front passenger
- Shift knob, leather-wrapped- Sill plate, Chevrolet
- Steering column, manual rake and telescopic- Steering wheel, 3-spoke leather-wrapped
- Theft-deterrent system, PASS-Key III- Trunk release, remote, located on driver-side
- Universal Home Remote includes garage door opener, 3-channel programmable
- Visors, driver and front passenger vanity mirrors, covered
- Windows, power with driver and passenger Express-Down/Up

Exterior

- Door handles, body-color
- Fascias, front and rear body-color, SS-specific with unique front grille and rear diffuser, lower extension, front air scoop and brake cooling slots
- Fog lamps (When (WRS) RS Package is ordered, fog lamps act as Daytime Running Lamps.)
- Headlamps, halogen composite with automatic exterior lamp control
- Hood blanket with debossed Chevrolet bowtie
- Mirrors, outside heated power-adjustable and driver-side auto-dimming, body-color
- Molding, Black roof ditch- Moldings, body-color lower rocker
- Spare tire and wheel, not desired tire sealant and inflator kit in place of spare tire
- Spoiler, rear- Tire sealant and inflator kit in place of spare tire
- Tires, P245/45R20 front and P275/40R20 rear, blackwall, summer
- Wheels, 20" x 8" (50.8 cm x 20.3 cm) front and 20" x 9" (50.8 cm x 22.9 cm) rear flangeless, painted aluminum with sterling silver finish (Midnight Silver finish when (WRS) RS Package is ordered.)
- Wipers, front intermittent

Safety

- Air conditioning, single-zone manual- Air filtration system with pollen filter
- Cargo convenience net- Coat hooks, driver- and passenger-side rear
- Compass, located in Driver Information Center- Console, floor, with armrest
- Cruise control, electronic with set and resume speed, steering wheel mounted
- Cup holders, 2 front- Dead pedal, driver- Defogger, rear-window, electric
- Door locks, power programmable with lockout protection- Floor mats, carpeted front
- Gauges, auxiliary, multi-function includes 4 gauges: oil pressure, battery voltage, oil temperature and transmission fluid temperature, mounted on center console forward of shifter
- Glovebox, lockable
- Instrumentation, analog with Driver Information Center display and SS detail, includes speedometer, tachometer, fuel gauge and engine temperature gauge
- Lighting, front reading lamps
- Lighting, interior dome with illuminated entry and theater dimming
- Map pockets, front doors- Mirror, inside rearview autodimming
- Power outlets, 2 auxiliary 1 located in center console storage area and 1 located at front of center console
- Remote Keyless Entry
- Seat adjuster, driver, 6-way power (fore/aft, up/down, tilt) with power recliner
- Seat adjuster, front passenger 2-way manual (fore/aft) with power recliner
- Seat trim, leather-appointed front seats- Seats, heated driver and front passenger
- Shift knob, leather-wrapped- Sill plate, Chevrolet
- Steering column, manual rake and telescopic- Steering wheel, 3-spoke leather-wrapped
- Theft-deterrent system, PASS-Key III- Trunk release, remote, located on driver-side
- Universal Home Remote includes garage door opener, 3-channel programmable
- Visors, driver and front passenger vanity mirrors, covered
- Windows, power with driver and passenger Express-Down/Up

Mechanical

- Alternator, 150 amps- Axle, 3.45 ratio
- Battery, maintenance-free with rundown protection and retained accessory power
- Brakes, 4-wheel antilock, 4-wheel disc (Brembo performance 4 piston front and 4 piston rear brakes.)
- Differential, limited slip
- Engine, 6.2L V8 SFI (426 hp [317.6 kW] @ 5900 rpm, 420 lb-ft of torque [567.0 N-m] @ 4600 rpm) (Requires (MN6) 6-speed manual transmission.)

- Exhaust, dual-outlet stainless-steel with polished tips - Rear wheel drive
- Steering, power, variable ratio- Suspension, Performance- Transmission, 6-speed manual

Option Packages

Factory Installed Packages

-
ENGINE, 6.2L V8 SFI
with Active Fuel Management
(400 hp [298.3 kW] @ 5900
rpm, 410 lb-ft of torque [553.5
N-m] @ 4300 rpm)

-
TRANSMISSION, 6-SPEED AUTOMATIC
includes TAPshift manual shift
controls on steering wheel \$1,185

-
Option Packages Total
\$1,185

RPM Garage

rpmgaragetx.com

972-590-8689

11450 Sprowles St

Dallas, TX 75229

© 2021 AutoRevo - All rights reserved. - Powered by [AutoRevo](#)