



2019 CHEVROLET 4500 DURAMAX DIESEL RCAB SELF LOADER MINT ONLY 5K MILES

Our Price \$74,900

View this vehicle on our website at njtruckking.com

King of Cars and Trucks

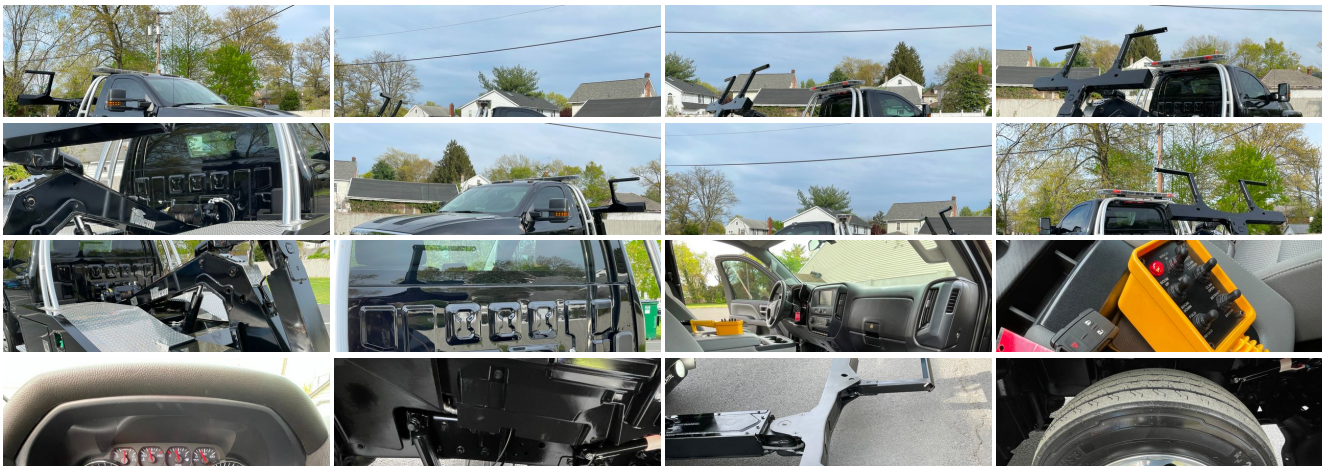
856-693-3181

1229 Broadway , Westville, New Jersey 08093

Photos

Details

Contact





Specifications:

Year:	2019
VIN:	1HTKHPVK1KH321010
Make:	CHEVROLET 4500 DURAMAX
Model/Trim:	DIESEL RCAB SELF LOADER MINT ONLY 5K MILES
Condition:	Pre-Owned
Body:	Pickup Truck
Exterior:	Black
Engine:	ENGINE, DURAMAX 6.6L TURBO-DIESEL V8, B20-DIESEL COMPATIBLE
Interior:	Gray
Mileage:	5,120
Drivetrain:	Rear Wheel Drive

Vehicle Description

LIKE NEW SELF LOADER TOW TRUCK

2019 CHEVROLET 4500 SELF LOADER

VULCAN BODY

TOW / REPO TRUCK

ALL POWER OPTIONS

DURAMAX DIESEL ENGINE

ALLISON AUTOMATIC TRANSMISSION

RWD

(ONLY 5,120 ORIGINAL / ACTUAL MILES)

GARAGED! MINT!

LIKE NEW TRUCK

PRISTINE

BEST COLOR COMBO

RUNS AND DRIVES LIKE NEW AND TIGHT!

DUAL TOOL BOX

REMOTE

THIS TRUCK IS IN PRISTINE CONDITION !

YOU WILL NOT FIND A NICER USED WRECKER ANYWHERE!

LIKE NEW TRUCK WITHOUT THE NEW TRUCK PRICE TAG!!!

WILL NOT LAST !

BEST OF THE BEST

BUY IT NOW

\$74,900

Installed Options

Interior

- Air conditioning, single-zone- Door locks, power- Seat trim, Vinyl
- Seats, front 40/20/40 split-bench, 3-passenger driver and front passenger recline with outboard head restraints and center fold-down armrest with storage. Vinyl has fixed lumbar and cloth has manually adjustable driver lumbar.
- Assist handle, front passenger and driver on A-pillars
- Cruise control, steering wheel-mounted
- Driver Information Center, 3.5-inch diagonal monochromatic display, provides warning messages and basic vehicle information
- Floor covering, Graphite-colored rubberized-vinyl
- Instrumentation, 6-gauge cluster featuring speedometer, fuel level, engine temperature, tachometer, voltage and oil pressure
- Interior trim, Jet Black/Dark Ash (Required and only available with (H2Q/H2R) Dark Ash seats with Jet Black interior accents.)
- Mirror, inside rearview manual day/night- Seat Belt, Black
- Speedometer, miles/kilometers- Steering column, manual Tilt-Wheel
- Steering wheel, urethane- Visors, driver and front passenger, vinyl

Exterior

- Assist steps- Wheels, 19.5" x 6.75", steel, Black painted, 8-holes, hub piloted
- Antenna, fixed mast- Bumper, front, Black- Door handles, Black
- Front fender extension, mold-in-color Black (Not available with (FNP) Body color front fender extension.)
- Glass, solar absorbing, tinted
- Grille guard screen, insect protection (mounted behind grille)
- Grille, base, molded in color, Black- Headlamps, halogen projector-beam
- Lamps, Smoked Amber roof marker
- Lamps, cargo area, cab mounted with switch on center switch bank
- Lamps, rear, stop/turn/backup (1-piece assembly) with license plate light
- Mirrors, outside high-visibility vertical camper-style, Black with manual folding and extension and lower convex spotter glass
- Spare tire delete
- Tail lamp provisions, located outside of frame (Will be installed with (F0C) 49" axle to end of frame and wheelbase (FQT, ED9, ER2, ED5, FNV or EM1) and rear mechanical suspension (FU7, GR3 or GR4). Will be required with (F0D) 63" axle to end of frame and wheelbase (ED9, ER2, ED5 or EM1) and rear air suspension (GP1, GP8 or G40). Will be required with (F0D) 63" axle to end of frame and wheelbase (ED9, ER2, ED5 or EM1) and rear mechanical suspension (FU7, GR3 or GR4) and (JL1) trailer brake controller. Will be required with (F0K) 91" axle to end of frame and (FPN) 231" wheelbase. Will be required with (F0I) 75" axle to end of frame and wheelbase (ED5, EQB, ER2 or FRP) and (JL1) trailer brake controller. Will be required with (F0G) 83" axle to end of frame, (FBC) 243" wheelbase and (JL1) trailer brake controller.)
- Tires, front 225/70R19.5G highway blackwall Hankook Max Axle Load: 7,940 lbs.
- Tires, rear 225/70R19.5G highway blackwall Hankook Max Axle Load: 15,000 lbs.
- Wheel, spare delete- Windows, manual driver and front passenger

Safety

- Air conditioning, single-zone- Door locks, power- Seat trim, Vinyl
- Seats, front 40/20/40 split-bench, 3-passenger driver and front passenger recline with outboard head restraints and center fold-down armrest with storage. Vinyl has fixed lumbar and cloth has manually adjustable driver lumbar.
- Assist handle, front passenger and driver on A-pillars
- Cruise control, steering wheel-mounted
- Driver Information Center, 3.5-inch diagonal monochromatic display, provides warning messages and basic vehicle information
- Floor covering, Graphite-colored rubberized-vinyl
- Instrumentation, 6-gauge cluster featuring speedometer, fuel level, engine temperature, tachometer, voltage and oil pressure
- Interior trim, Jet Black/Dark Ash (Required and only available with (H2Q/H2R) Dark Ash seats with Jet Black interior accents.)
- Mirror, inside rearview manual day/night- Seat Belt, Black
- Speedometer, miles/kilometers- Steering column, manual Tilt-Wheel
- Steering wheel, urethane- Visors, driver and front passenger, vinyl

Mechanical

- Fuel, diesel B20
- Highway Service Transmission, Automatic close-ratio 6 SPD with double overdrive, Allison, A1700HS ratios: 3.10 1ST, 1.80 2ND, 1.40 3RD, 1.00 4TH, 0.70 5TH, 0.61 6TH Highwvay Series. 19.5K GVW & 26K GCW Max.. requires PTX and park pawl. Available

Option Packages

Factory Installed Packages

ENGINE, DURAMAX 6.6L TURBO-DIESEL V8, B20-DIESEL COMPATIBLE

350 hp @ 2700 rpm, 700 lb-ft torque @ 1600 rpm

Highway Series, Rear GVW & GCWR max, requires 1.7K and park park. Transfer with GVWs less than or equal to 19.5K (Requires (C5B) 15,000 lbs. GVWR, (C7P) 16,000 lbs. GVWR, (C7R) 16,500 lbs. GVWR, (GZX) 17,500 lbs. GVWR, (GZJ) 18,000 lbs. GVWR or (GZG) 19,500 lbs. GVWR. Requires (R6G) 26,000 lb. GCWR (11,793 kg).)

- Alternator, 150 amps- Axle lubricant, rear, synthetic oil EmGard FE -75W-90
- Axle to End of Frame, 49" (Requires wheelbase (ED5) 201", (ED9) 165", (ER2) 189" or (FQT) 141". Not available with (G40), (GP1) or (GP8) rear air suspension.)
- Axle, limited slip, Dana Spicer Truetrac, torque proportioning limited slip
- Batteries, heavy-duty dual 1100 cold-cranking amps, includes battery box mounted to left side under cab
- Brakes, hydraulic, heavy duty Bosch/Meritor/Wabco system with 4-channel (ABS) (Includes (J69) driveline park brake.)
- Capped Fuel Fill- Emissions, USA 50 State certified
- Engine, Duramax 6.6L Turbo-Diesel V8, B20-Diesel compatible 350 hp @ 2700 rpm, 700 lb-ft torque @ 1600 rpm
- Exhaust system, right side exit, behind rear wheel (Requires (FQT) 141" wheelbase.)
- Front axle, 7,000 lbs., Dana Spicer D800-N, "I"-beam, non-driving (Requires (FK6) 7,000 lb. (3,175 kg) front suspension.)
- Front suspension, 7,000 lbs. (3,175 kg) multi-leaf, includes shock absorbers
- Fuel tank, rear only, 40 gallon, mounted between frame side rails and behind rear axle
- GVWR, 16,500 lbs. (7484 kg) (Silverado 4500HD Requires (FTA) 7,000 lb. front axle/(FK6) suspension and (FN1) 10,000 lb. rear axle and (GR3) 11,000 lb. rear suspension or (G40) 12,000 lb. rear air suspension, or (FTD) 6,000 lb. front axle/(F95) suspension, (GL4) 11,000 lb. rear axle and (GR3) 11,000 lb. or (GR4) 13,500 lb rear suspension, or (G40) 12,000 lb. rear air suspension, or (FTA) 7,000 lb. front axle/(FK6) suspension and (FU7) 15,500 lb. rear suspension or (GP8) 15,500 lb. rear air suspension and (HD1) 15,000 lb. rear axle, or (FTA) 7,000 lb. front axle/(FK6) suspension and (G40) 12,000 lb. rear air suspension or (GP1) 13,500 lb. rear air suspension or (GR3) 11,000 lb. rear suspension or (GR4) 13,500 lb. rear suspension and (GL4) 11,000 lb. rear axle. Not available with rear air suspension when ordered with (FQT) 141" wheelbase.)
- Incomplete vehicle
- Rear axle, 10,000 lb. (4,536 kg) Dana Spicer S14-110, single reduction
- Rear axle, 4.10 ratio Max road speed: 79 MPH (Not available with Allison 1750 transmission with 30,000 GCWR rating (MJ0), (MI0), (MHV), (ME0).)
- Rear suspension, 11,000 (4,990 kg) multi-leaf, vari-rate (Not available with air suspension.)
- Rear wheel drive- Steering, power (Bosch S2 8014 Plus)
- Transmission shift control calibration, fuel sense Performance
- Wheelbase, 141" (358.1 cm), 60" CA (Requires (F0C) 49" axle to end of frame and (NPR) exhaust. Not available with rear air suspensions.)

King of Cars and Trucks

King of Cars and Trucks

View this car on our website at njtruckking.com/6944825

Website: njtruckking.com

Phone: [856-693-3181](tel:856-693-3181)

Map: [1229 Broadway, Westville, New Jersey 08093](#)

