

njtruckking.com
856-693-3181
1229 Broadway
Westville, New Jersey
08093

King of Cars and
Trucks

2001 FORD F250 LARIAT 7.3L DIESEL EXT CAB MANUAL TRANS 4X4 LOW MILES

View this car on our website at njtruckking.com/6943479/ebrochure



Our Price **\$26,900**

Specifications:

Year: 2001
VIN: 1FTNX21F91EB18875
Make: FORD F250 LARIAT 7.3L
Model/Trim: DIESEL EXT CAB MANUAL TRANS 4X4
 LOW MILES
Condition: Pre-Owned
Body: Pickup Truck
Exterior: Gold
Engine: 7.3L (444) DI V8 TURBO-DIESEL
 "POWER STROKE" ENGINE
Interior: Tan Leather
Mileage: 112,310
Drivetrain: 4 Wheel Drive

2001 FORD F250 EXT CAB 4X4

8' BED

~LARIAT~

ALL POWER OPTIONS

7.3L POWERSTROKE TURBO DIESEL !

MANUAL TRANSMISSION

(ONLY 112,310 ORIGINAL / ACTUAL MILES)

1-OWNER TRUCK!

ELDERLY OWNED

CLEAN CARFAX !

EXCELLENT CONDITION

NON SMOKER

RUNS AND DRIVES 100% AND TIGHT

UNDERSIDE EXCELLENT CONDITION

ORIGINAL OWNERS MANUALS

METICULOUSLY MAINTAINED !

HARD TO FIND EM LIKE THIS!

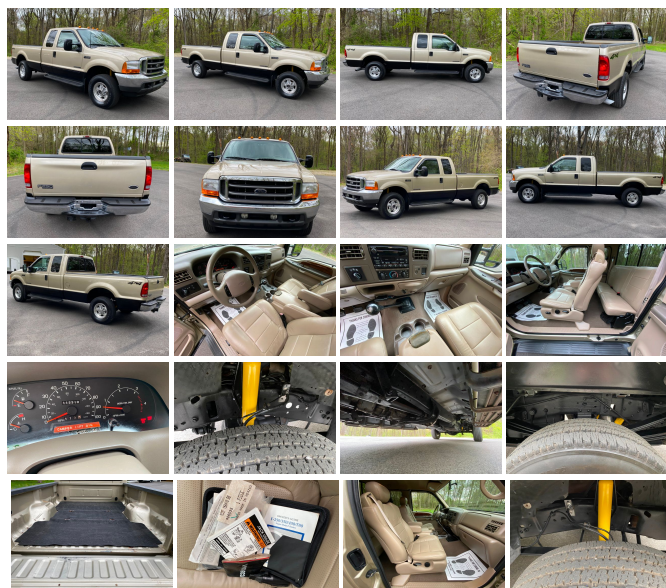
RARE TRUCK!

WILL NOT LAST LONG!

DONT MISS IT!

\$26,900

CALL /TEXT ROB 856-381-6621 WITH ANY QUESTIONS



Our Location :



2001 FORD F250 LARIAT 7.3L DIESEL EXT CAB MANUAL TRANS 4X4 LOW MILES
King of Cars and Trucks - 856-693-3181 - View this car on our website at njtruckking.com/6943479/ebrochure

Installed Options

Interior

- Nudo leather 40/20/40 split front bench seat-inc: armrest, cup holders, storage, outboard headrests
- Premium electronic AM/FM stereo radio w/cassette, single CD player-inc: digital clock, premium sound w/amplifier, (4) speakers
- Pwr door locks w/backlit switches
- Remote keyless entry-inc: 2-step unlock system, front door courtesy lights
- (4) air registers w/positive shut-off- 11.5" day/night mirror- 6-way pwr driver seat
- Accessory delay- Air conditioning- Auxiliary pwr point
- Belt Minder seatbelt-not-buckled chime & flashing warning light
- Color-keyed carpet full-floor covering- Color-keyed carpeted floor mats
- Color-keyed instrument panel w/dual cupholders/glove box/ashtray/cigar lighter
- Color-keyed leather-wrapped steering wheel- Color-keyed molded cloth headliner
- Color-keyed molded door trim panel-inc: soft armrest, grab handle,reflector, upper vinyl insert, carpeted map pocket
- Color-keyed scuff plates- Driver seat manual lumbar support
- Dual color-keyed cloth sunvisors w/secondary blades-inc: driver-side map strap, dual covered lighted mirrors
- Dual color-keyed coat hooks- Front door operated dome lamp w/time delay off
- Front passenger assist handle- Grey fabric back panel cover- Inside hood release
- Instrumentation-inc: tachometer, trip odometer, voltmeter, oil pressure/ coolant temp/fuel gauges, indicator lights
- Overhead console-inc: trip computer, compass, DTE, average fuel economy, outside temp, storage bin
- Pwr windows w/driver one-touch-down/backlit switches- Speed control
- Tilt steering column- Underhood service light
- Vinyl fold-up rear bench seat-inc: underseat storage net

Exterior

- Black fold-away pwr mirrors- Molded black cab steps- Aero halogen headlights

Option Packages

Factory Installed Packages

7.3L (444) DI V8 TURBO-DIESEL "POWER STROKE" ENGINE	
-inc: 115 amp alt, dual 78 amp/hr batteries, engine block heater, exhaust back pressure valve	\$4,720

Option Packages Total	\$4,720
-----------------------	---------

- Argent box-rail/tailgate moldings- Argent grille w/chrome surround- Black door handles
- Chrome front bumper w/lower center trim- Chrome rear step bumper
- Color-keyed body-side moldings- Dual rear access doors- Flip-out rear quarter windows
- Fog lamps- Front/rear license plate brackets- Interval wipers- Pickup box/cargo light
- Rear quarter window/rear window privacy glass
- Removable locking tailgate w/black handle- Sliding rear window
- Solar tinted windshield/front door glass- Valance air dam

Safety

- Nudo leather 40/20/40 split front bench seat-inc: armrest, cup holders, storage, outboard headrests
- Premium electronic AM/FM stereo radio w/cassette, single CD player-inc: digital clock, premium sound w/amplifier, (4) speakers
- Pwr door locks w/backlit switches
- Remote keyless entry-inc: 2-step unlock system, front door courtesy lights
- (4) air registers w/positive shut-off- 11.5" day/night mirror- 6-way pwr driver seat
- Accessory delay- Air conditioning- Auxiliary pwr point
- Belt Minder seatbelt-not-buckled chime & flashing warning light
- Color-keyed carpet full-floor covering- Color-keyed carpeted floor mats
- Color-keyed instrument panel w/dual cupholders/glove box/ashtray/cigar lighter
- Color-keyed leather-wrapped steering wheel- Color-keyed molded cloth headliner
- Color-keyed molded door trim panel-inc: soft armrest, grab handle, reflector, upper vinyl insert, carpeted map pocket
- Color-keyed scuff plates- Driver seat manual lumbar support
- Dual color-keyed cloth sunvisors w/secondary blades-inc: driver-side map strap, dual covered lighted mirrors
- Dual color-keyed coat hooks- Front door operated dome lamp w/time delay off
- Front passenger assist handle- Grey fabric back panel cover- Inside hood release
- Instrumentation-inc: tachometer, trip odometer, voltmeter, oil pressure/ coolant temp/fuel gauges, indicator lights
- Overhead console-inc: trip computer, compass, DTE, average fuel economy, outside temp, storage bin
- Pwr windows w/driver one-touch-down/backlit switches- Speed control
- Tilt steering column- Underhood service light
- Vinyl fold-up rear bench seat-inc: underseat storage net

Mechanical

- (5) LT265/75R16E all-season SBR BSW tires- 5-speed manual transmission w/OD
- 5.4L (330) SOHC SEFI V8 engine
- Full-size spare tire w/steel wheel, lock, underframe crank carrier
- Pwr 4-wheel disc brakes w/4-wheel anti-lock system- (2) front tow hooks
- (4) 16" x 7.0" premium aluminum wheels w/bright center ornaments - 130 amp alternator
- 158" WB- 2-speed transfer case- 3.73 axle ratio- 38 gallon fuel tank
- 78 amp/hr (750 CCA) maintenance-free battery
- 8' pickup box w/tie-down hooks & partitionable/stackable storage
- 8,800# GVWR (4700 front/6084 rear), springs (4700 front/6084 rear), axles (4700 front/6084 rear)
- Auxiliary rear springs *Activated when carrying heavy loads*- Four wheel drive
- Front stabilizer bar- HD gas shock absorbers- Manual locking front hubs
- Mono-beam front axle- Pwr steering
- Trailer tow pkg-inc: 7-wire harness, trailer brake wiring kit, trailer tow guide

King of Cars and Trucks

njtruckking.com

856-693-3181

1229 Broadway

Westville, New Jersey 08093

© 2024 AutoRevo - All rights reserved. - Powered by [AutoRevo](#)