

139 W Main St  
 Branford, CT 06405

# 2016 Ford Super Duty F-250 Pickup XLT

**Eric Zuwalick**

View this car on our website at [soundautowholesalers.com/6943168/ebrochure](http://soundautowholesalers.com/6943168/ebrochure)

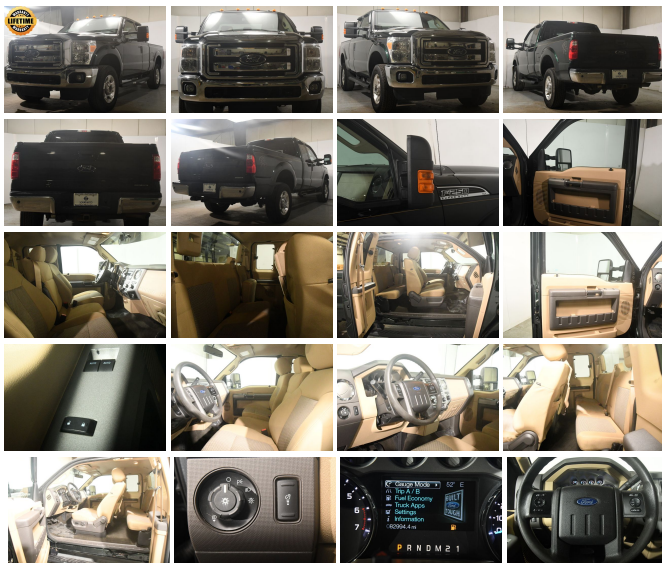


No-Haggle Price **\$31,999**

## Specifications:

**Year:** 2016  
**VIN:** 1FT7X2B69GEB47003  
**Make:** Ford  
**Stock:** 4329  
**Model/Trim:** Super Duty F-250 Pickup XLT  
**Condition:** Pre-Owned  
**Body:** Pickup Truck  
**Exterior:** Green Gem Metallic  
**Engine:** ENGINE: 6.2L 2-VALVE SOHC EFI NA V8 FLEX-FUEL  
**Interior:** Adobe Cloth  
**Mileage:** 82,990  
**Drivetrain:** 4 Wheel Drive

FREE LIFETIME POWERTRAIN WARRANTY (See Website for Complete Details - not available on Range Rover, Porsche or vehicles with over 100,000 miles). Dan Merriam's Sound Auto Wholesalers is A PLUS RATED by the Better Business Bureau -HIGHEST RATING POSSIBLE. Every vehicle is VALUE PRICED & SOUND AUTO CERTIFIED. CLICK ON THE {CARVANA? CARMAX?} TAB TO SEE HOW WE PROVIDE MORE VALUE AND CONVENIENCE THAN THE NATIONAL COMPETITORS.



2016 Ford Super Duty F-250 Pickup XLT

Sound Auto Wholesalers - - View this car on our website at [soundautowholesalers.com/6943168/ebrochure](http://soundautowholesalers.com/6943168/ebrochure)

## Our Location :



2016 Ford Super Duty F-250 Pickup XLT

Sound Auto Wholesalers - - View this car on our website at [soundautowholesalers.com/6943168/ebrochure](http://soundautowholesalers.com/6943168/ebrochure)

## Installed Options

### Interior

- 2 Seatback Storage Pockets- 3 12V DC Power Outlets
- 4-Way Driver Seat -inc: Manual Recline, Fore/Aft Movement and Manual Lumbar Support
- 4-Way Passenger Seat -inc: Manual Recline and Fore/Aft Movement
- 60-40 Folding Split-Bench Front Facing Fold-Up Cushion Rear Seat - Analog Display
- Cloth 40/20/40 Split Bench Seat -inc: 20% locking center under seat storage, center armrest, cupholder, storage and 4-way adjustable driver/passenger headrests
- Cruise Control w/Steering Wheel Controls- Day-Night Rearview Mirror
- Delayed Accessory Power- Driver And Passenger Visor Vanity Mirrors
- Fade-To-Off Interior Lighting- Front Cupholder- Front Map Lights
- Front Seats w/Manual Driver Lumbar
- Full Carpet Floor Covering -inc: Carpet Front And Rear Floor Mats - Full Cloth Headliner
- Full Overhead Console w/Storage and 3 12V DC Power Outlets
- Gauges -inc: Speedometer, Odometer, Oil Pressure, Engine Coolant Temp, Tachometer, Transmission Fluid Temp, Engine Hour Meter and Trip Odometer
- Glove Box- HVAC -inc: Underseat Ducts
- Instrument Panel Bin, Dashboard Storage, Driver And Passenger Door Bins
- Interior Trim -inc: Chrome Interior Accents - Manual Air Conditioning
- Manual Tilt/Telescoping Steering Column- Manual Vented Rear Windows
- Manual w/Tilt Front Head Restraints and Fixed Rear Head Restraints
- Outside Temp Gauge- Perimeter Alarm
- Power 1st Row Windows w/Driver And Passenger 1-Touch Up/Down - Power Door Locks
- Remote Keyless Entry w/Integrated Key Transmitter, Illuminated Entry and Panic Button
- Securilock Anti-Theft Ignition (pats) Engine Immobilizer- Systems Monitor
- Underhood And Pickup Cargo Box Lights - Urethane Gear Shifter Material

### Exterior

- Aero-Composite Halogen Headlamps- Black Door Handles
- Black Power Heated Side Mirrors w/Convex Spotter, Manual Folding and Turn Signal

indicator

- Black Side Windows Trim and Black Front Windshield Trim
- Cargo Lamp w/High Mount Stop Light- Chrome Front Bumper w/2 Tow Hooks
- Chrome Grille- Chrome Rear Step Bumper- Clearcoat Paint- Deep Tinted Glass
- Fixed Rear Window- Front License Plate Bracket
- Full-Size Spare Tire Stored Underbody w/Crankdown- Fully Galvanized Steel Panels
- Manual Extendable Trailer Style Mirrors- Manual Tailgate/Rear Door Lock
- Perimeter/Approach Lights- Regular Box Style- Reverse Opening Rear Doors
- Steel Spare Wheel- Tailgate Rear Cargo Access- Tires: LT275/65Rx18E BSW A/S
- Variable Intermittent Wipers
- Wheels: 18" Cast Aluminum -inc: bright hub covers/center ornaments

## Safety

- 2 Seatback Storage Pockets- 3 12V DC Power Outlets
- 4-Way Driver Seat -inc: Manual Recline, Fore/Aft Movement and Manual Lumbar Support
- 4-Way Passenger Seat -inc: Manual Recline and Fore/Aft Movement
- 60-40 Folding Split-Bench Front Facing Fold-Up Cushion Rear Seat - Analog Display
- Cloth 40/20/40 Split Bench Seat -inc: 20% locking center under seat storage, center armrest, cupholder, storage and 4-way adjustable driver/passenger headrests
- Cruise Control w/Steering Wheel Controls- Day-Night Rearview Mirror
- Delayed Accessory Power- Driver And Passenger Visor Vanity Mirrors
- Fade-To-Off Interior Lighting- Front Cupholder- Front Map Lights
- Front Seats w/Manual Driver Lumbar
- Full Carpet Floor Covering -inc: Carpet Front And Rear Floor Mats - Full Cloth Headliner
- Full Overhead Console w/Storage and 3 12V DC Power Outlets
- Gauges -inc: Speedometer, Odometer, Oil Pressure, Engine Coolant Temp, Tachometer, Transmission Fluid Temp, Engine Hour Meter and Trip Odometer
- Glove Box- HVAC -inc: Underseat Ducts
- Instrument Panel Bin, Dashboard Storage, Driver And Passenger Door Bins
- Interior Trim -inc: Chrome Interior Accents - Manual Air Conditioning
- Manual Tilt/Telescoping Steering Column- Manual Vented Rear Windows
- Manual w/Tilt Front Head Restraints and Fixed Rear Head Restraints
- Outside Temp Gauge- Perimeter Alarm
- Power 1st Row Windows w/Driver And Passenger 1-Touch Up/Down - Power Door Locks
- Remote Keyless Entry w/Integrated Key Transmitter, Illuminated Entry and Panic Button
- Securilock Anti-Theft Ignition (pats) Engine Immobilizer- Systems Monitor
- Underhood And Pickup Cargo Box Lights- Urethane Gear Shifter Material

## Mechanical

- 157 Amp Alternator- 3.73 Axle Ratio- 3300# Maximum Payload- 35 Gal. Fuel Tank
- 4-Wheel Disc Brakes w/4-Wheel ABS, Front And Rear Vented Discs, Brake Assist and Hill Hold Control
- 72-Amp/Hr 650CCA Maintenance-Free Battery w/Run Down Protection
- Class V Towing Equipment -inc: Hitch, Brake Controller and Trailer Sway Control
- Engine: 6.2L 2-Valve SOHC EFI NA V8 Flex-Fuel - Firm Suspension- Front Anti-Roll Bar
- Front Suspension w/Coil Springs- GVWR: 10,000 lb Payload Package
- HD Shock Absorbers- Hydraulic Power-Assist Steering
- Leaf Rear Suspension w/Leaf Springs- Manual Locking Hubs- Manual Transfer Case
- Part-Time Four-Wheel Drive- Single Stainless Steel Exhaust- Trailer Wiring Harness
- Transmission w/Oil Cooler- Transmission: TorqShift 6-Speed Automatic -inc: SelectShift

## Option Packages

### Factory Installed Packages

ENGINE: 6.2L 2-VALVE SOHC EFI NA V8  
FLEX-FUEL

GREEN GEM METALLIC

Prices do not include sales tax, registration fees and dealer conveyance fee of 699. If you have a trade-in your sales tax will be reduced based on the difference between the car you are purchasing and your trade-in. Final credit decisions are made by lenders.

---

Sound Auto Wholesalers  
[soundautowholesalers.com](http://soundautowholesalers.com)

139 W Main St  
Branford, CT 06405

© 2021 AutoRevo - All rights reserved. - Powered by [AutoRevo](#)