



2010 Chevrolet Camaro 1SS CAMMED

Website Price \$22,995

View this vehicle on our website at autoparkdallas.com



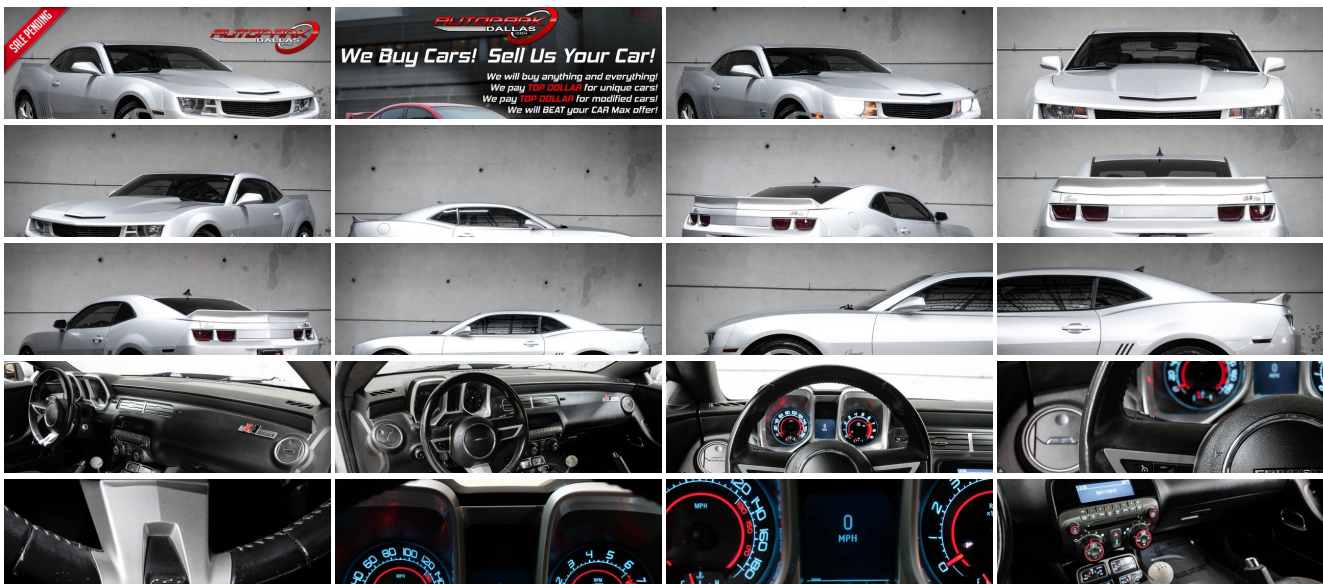
(214) 945-2601

2061 S Stemmons Fwy , Lewisville, TX 75067

Photos

Details

Contact



Specifications:

Year:	2010
VIN:	2G1FS1EW0A9119609
Make:	Chevrolet
Model/Trim:	Camaro 1SS CAMMED
Condition:	Pre-Owned
Body:	Coupe
Exterior:	Silver Ice Metallic
Engine:	ENGINE, 6.2L V8 SFI
Interior:	Black
Mileage:	67,921
Drivetrain:	Rear Wheel Drive
Economy:	City 16 / Highway 24

Vehicle Description

AutoPark Dallas is thrilled to offer you this modified (Car) for sale!

MORE DETAILS COMING SOON!!!

Financing is available!

Check out our Payment Calculator to get an estimate on your monthly payments!

OR

Get pre-approved in no time by filling out a credit application on the 'Finance' section of our website!

Check out our Google Reviews by *Clicking* this [LINK!](#)

Referrals and Testimonials is what our business is built on!

The team here at AutoPark Dallas, is dedicated to offering a level of customer service not usually found in the automobile industry. Thanks to years of extensive car buying / selling experience, we pursue quality used and new vehicles that are hand-picked from factory sources. Our love for automobiles and dislike of traditional dealership tactics is what motivates us to provide the service we do! The pride we take in continuing this service long after the vehicle has been delivered is what we strive for! Looking forward to making every effort to see that our customer is completely satisfied and a friend for life!

Pre-purchase inspections are always welcomed!

We also offer airport pick-up, competitive financing options, free CarFax Reports, Car Shipping nationwide, Extended Warranty plans, and so much more!

Trade-In(s) are always accepted or sell us your used car (MODIFIED OR NOT)! Please call or text for more information about Trade-Ins or selling your car to us @ (214) 945-2601!

#(214) 945-2601

Call or Text *Anytime!*

Se habla Español

WE BUY CARS!

WWW.AUTOPARKDALLAS.COM

Installed Options

Interior

- Door locks, power programmable with lockout protection- Floor mats, carpeted front
- Remote Keyless Entry- Air conditioning, single-zone manual
- Air filtration system with pollen filter- Coat hooks, driver- and passenger-side rear
- Compass, located in Driver Information Center - Console, floor, with armrest
- Cruise control, electronic with set and resume speed, steering wheel mounted
- Cup holders, 2 front- Dead pedal, driver- Defogger, rear-window, electric
- Glovebox, lockable
- Instrumentation, analog with Driver Information Center display and SS detail, includes speedometer, tachometer, fuel gauge and engine temperature gauge
- Lighting, front reading lamps
- Lighting, interior dome with illuminated entry and theater dimming
- Map pockets, front doors- Mirror, inside rearview manual day/night
- Power outlets, 2 auxiliary 1 located in center console storage area and 1 located at front of center console
- Seat adjuster, driver, 6-way power (fore/aft, up/down, tilt) with power recliner
- Seat adjuster, front passenger 2-way manual (fore/aft) with power recliner
- Shift knob, leather-wrapped- Sill plate, Chevrolet
- Steering column, manual rake and telescopic- Steering wheel, 3-spoke leather-wrapped
- Theft-deterrent system, PASS-Key III - Trunk release, remote, located on driver-side
- Visors, driver and front passenger vanity mirrors, covered
- Windows, power with driver and passenger Express-Down/Up

Exterior

- Headlamps, halogen composite with automatic exterior lamp control
- Tires, P245/45R20 front and P275/40R20 rear, blackwall, summer
- Wheels, 20" x 8" (50.8 cm x 20.3 cm) front and 20" x 9" (50.8 cm x 22.9 cm) rear flangeless, painted aluminum with sterling silver finish (Midnight Silver finish when (WRS) RS Package is ordered.)
- Door handles, body-color
- Fascias, front and rear body-color, SS-specific with unique front grille and rear diffuser, lower extension, front air scoop and brake cooling slots
- Fog lamps (When (WRS) RS Package is ordered, fog lamps act as Daytime Running Lamps.)
- Hood blanket with debossed Chevrolet bowtie
- Mirrors, outside power-adjustable body-color- Molding, Black roof ditch
- Moldings, body-color lower rocker
- Spare tire and wheel, not desired tire sealant and inflator kit in place of spare tire
- Spoiler, rear- Tire sealant and inflator kit in place of spare tire - Wipers, front intermittent

Safety

- Door locks, power programmable with lockout protection- Floor mats, carpeted front
- Remote Keyless Entry- Air conditioning, single-zone manual
- Air filtration system with pollen filter- Coat hooks, driver- and passenger-side rear
- Compass, located in Driver Information Center - Console, floor, with armrest
- Cruise control, electronic with set and resume speed, steering wheel mounted
- Cup holders, 2 front- Dead pedal, driver- Defogger, rear-window, electric
- Glovebox, lockable
- Instrumentation, analog with Driver Information Center display and SS detail, includes speedometer, tachometer, fuel gauge and engine temperature gauge
- Lighting, front reading lamps
- Lighting, interior dome with illuminated entry and theater dimming
- Map pockets, front doors- Mirror, inside rearview manual day/night
- Power outlets, 2 auxiliary 1 located in center console storage area and 1 located at front of center console
- Seat adjuster, driver, 6-way power (fore/aft, up/down, tilt) with power recliner
- Seat adjuster, front passenger 2-way manual (fore/aft) with power recliner
- Shift knob, leather-wrapped- Sill plate, Chevrolet
- Steering column, manual rake and telescopic- Steering wheel, 3-spoke leather-wrapped
- Theft-deterrent system, PASS-Key III - Trunk release, remote, located on driver-side

Option Packages

Factory Installed Packages

ENGINE, 6.2L V8 SFI

(426 hp [317.6 kW] @ 5900 rpm, 420 lb-ft of torque [567.0 N-m] @ 4600 rpm)

- Visors, driver and front passenger vanity mirrors, covered
- Windows, power with driver and passenger Express-Down/Up

Mechanical

- Transmission, 6-speed manual- Alternator, 150 amps- Axle, 3.45 ratio
- Battery, maintenance-free with rundown protection and retained accessory power
- Brakes, 4-wheel antilock, 4-wheel disc (Brembo performance 4 piston front and 4 piston rear brakes.)
- Differential, limited slip
- Engine, 6.2L V8 SFI (426 hp [317.6 kW] @ 5900 rpm, 420 lb-ft of torque [567.0 N-m] @ 4600 rpm) (Requires (MN6) 6-speed manual transmission.)
- Exhaust, dual-outlet stainless-steel with polished tips- Rear wheel drive
- Steering, power, variable ratio- Suspension, Performance



Auto Park Dallas

View this car on our website at autoparkdallas.com/6943033

Website: autoparkdallas.com

Phone: (214) 945-2601

Map: [2061 S Stemmons Fwy, Lewisville, TX 75067](#)



