

njtrucking.com
856-693-3181
1229 Broadway
Westville, New Jersey
08093

King of Cars and
Trucks

2014 FORD F350 LARIAT 4X4 DIESEL DRW DUALY ONLY 77K MILES WOW MINT

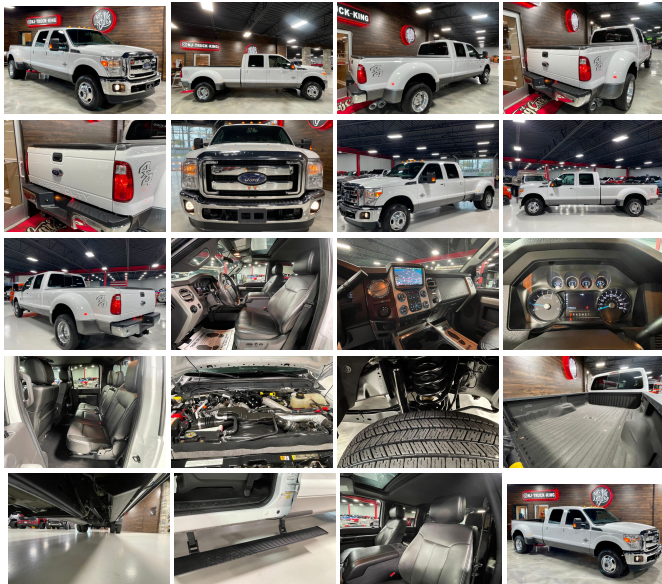
View this car on our website at njtrucking.com/6942445/ebrochure



Our Price **\$49,900**

Specifications:

Year: 2014
VIN: 1FT8W3DT1EEB84169
Make: FORD F350 LARIAT 4X4
Model/Trim: DIESEL DRW DUALY ONLY 77K MILES WOW MINT
Condition: Pre-Owned
Body: Pickup Truck
Exterior: White
Engine: ENGINE: 6.7L 4 VALVE POWER STROKE DIESEL V8 (B20)
Interior: Black Leather
Mileage: 77,899
Drivetrain: 4 Wheel Drive



2014 FORD F350 CREW 4X4 DRW

~LARIAT~ LOADED!

6.7L POWERSTROKE TURBO DIESEL !!

AUTOMATIC TRANSMISSION

(ONLY 77,899 ORIGINAL / ACTUAL MILES)

2-OWNER

EXCELLENT CONDITION

RUNS AND DRIVES 100% AND TIGHT LIKE NEW

METICULOUSLY MAINTAINED !

SUNROOF

NAVIGATION

LEATHER & MORE

AMP AUTO FOLDING RUNNING BOARDS

EXCELLENT CONDITION

WILL NOT LAST LONG!

SUPER SUPER CLEAN

DONT MISS IT!

\$49,900

CALL /TEXT ROB 856-381-6621 WITH ANY QUESTIONS

2014 FORD F350 LARIAT 4X4 DIESEL DRW DUALY ONLY 77K MILES WOW MINT

King of Cars and Trucks - 856-693-3181 - View this car on our website at njtruckking.com/6942445/ebrochure

Vehicle History Report : as Of 04/26/2024



Snapshot

2014 FORD F-350 SUPER DUTY LARIAT



Damage reported: minor damage



MINOR MODERATE SEVERE

22 Service history records



3 Previous owners



Personal vehicle



122,751 Last reported odometer reading



FREE CARFAX Report

See the full CARFAX Report for additional information

*carfax Snapshot is a reflection of available information on the date the report was pulled. carfax is constantly being updated with new information and is subject to change at any time.

Our Location :



2014 FORD F350 LARIAT 4X4 DIESEL DRW DUALY ONLY 77K MILES WOW MINT

King of Cars and Trucks - 856-693-3181 - View this car on our website at njtruckking.com/6942445/ebrochure

Installed Options

Interior

- 10-Way Power Driver Seat -inc: Power Recline, Height Adjustment, Fore/Aft Movement, Cushion Tilt and Power 2-Way Lumbar Support
- 10-Way Power Passenger Seat -inc: Power Recline, Height Adjustment, Fore/Aft Movement, Cushion Tilt and Power 2-Way Lumbar Support
- Driver And Passenger Visor Vanity Mirrors w/Driver And Passenger Illumination
- Front Seats w/Power 2-Way Driver Lumbar
- Full Carpet Floor Covering -inc: Carpet Front And Rear Floor Mats
- Gauges -inc: Speedometer, Odometer, Oil Pressure, Engine Coolant Temp, Tachometer, Transmission Fluid Temp, Engine Hour Meter, Trip Odometer and Trip Computer
- Power 1st Row Windows w/Driver And Passenger 1-Touch Up/Down
- Power Adjustable Pedals- Power Door Locks w/Autolock Feature- Power Rear Windows
- Premium Leather Seating Surfaces 40/Console/40 -inc: 10-way power driver and passenger seating, 4-way adjustable driver/passenger headrests, matching 60/40 rear bench w/partitioned locking under-seat storage and 12V power point
- Remote Keyless Entry w/Integrated Key Transmitter, Illuminated Entry and Panic Button
- Trip Computer- 2 Seatback Storage Pockets- 5 12V DC Power Outlets
- 60-40 Folding Split-Bench Front Facing FlexFold Flip Forward Cushion/Seatback Rear Seat
- Analog Display- Cruise Control w/Steering Wheel Controls
- Day-Night Auto-Dimming Rearview Mirror- Delayed Accessory Power
- Dual Zone Front Automatic Air Conditioning- Fade-To-Off Interior Lighting
- Front And Rear Map Lights- Front Cupholder- Full Cloth Headliner
- Full Floor Console w/locking Storage- Full Overhead Console w/Storage and 5 12V DC

Option Packages

Factory Installed Packages

ENGINE: 6.7L 4 VALVE POWER STROKE DIESEL V8 (B20)
 -inc: engine exhaust braking integrated in tow haul mode, 37.5 Gallon Fuel Tank, Dual 78-AH 750 CCA Batteries

Option Packages Total **\$8,315**

- Full Floor Console w/Locking Storage, Full Overhead Console w/Storage and 5 12V DC Power Outlets
- Glove Box- HVAC -inc: Underseat Ducts and Console Ducts
- Instrument Panel Bin, Covered Dashboard Storage, Driver / Passenger And Rear Door Bins and Locking 2nd Row Underseat Storage
- Interior Trim -inc: Chrome/Metal-Look Interior Accents - Keypad- Leather Steering Wheel
- Manual Adjustable Rear Head Restraints- Manual Tilt/Telescoping Steering Column
- Outside Temp Gauge- Perimeter Alarm- Rear Center Armrest- Rear Cupholder
- Securilock Anti-Theft Ignition (pats) Engine Immobilizer- Systems Monitor
- Underhood And Pickup Cargo Box Lights- Urethane Gear Shifter Material

Exterior

- Black Power Heated Side Mirrors w/Convex Spotter, Power Folding and Turn Signal Indicator
- Manual Tailgate/Rear Door Lock- Side Steps- Tires: LT245/75R17E BSW A/S (7)
- Black Side Windows Trim and Black Front Windshield Trim - Body-Colored Door Handles
- Cab Clearance Lights- Cargo Lamp w/High Mount Stop Light
- Chrome Front Bumper w/2 Tow Hooks- Chrome Grille- Chrome Rear Step Bumper
- Clearcoat Paint- Deep Tinted Glass- Front Fog Lamps- Front License Plate Bracket
- Full-Size Spare Tire Stored Underbody w/Crankdown
- Fully Automatic Aero-Composite Halogen Headlamps w/Delay-Off
- Fully Galvanized Steel Panels- Perimeter/Approach Lights
- Power Extendable Trailer Style Mirrors- Power Rear Window w/Defroster
- Regular Box Style- Steel Spare Wheel- Tailgate Rear Cargo Access
- Variable Intermittent Wipers
- Wheels: 17" Forged Polished Aluminum (4) -inc: bright hub covers/center ornaments

Safety

- 10-Way Power Driver Seat -inc: Power Recline, Height Adjustment, Fore/Aft Movement, Cushion Tilt and Power 2-Way Lumbar Support
- 10-Way Power Passenger Seat -inc: Power Recline, Height Adjustment, Fore/Aft Movement, Cushion Tilt and Power 2-Way Lumbar Support
- Driver And Passenger Visor Vanity Mirrors w/Driver And Passenger Illumination
- Front Seats w/Power 2-Way Driver Lumbar
- Full Carpet Floor Covering -inc: Carpet Front And Rear Floor Mats
- Gauges -inc: Speedometer, Odometer, Oil Pressure, Engine Coolant Temp, Tachometer, Transmission Fluid Temp, Engine Hour Meter, Trip Odometer and Trip Computer
- Power 1st Row Windows w/Driver And Passenger 1-Touch Up/Down
- Power Adjustable Pedals- Power Door Locks w/Autolock Feature- Power Rear Windows
- Premium Leather Seating Surfaces 40/Console/40 -inc: 10-way power driver and passenger seating, 4-way adjustable driver/passenger headrests, matching 60/40 rear bench w/partitioned locking under-seat storage and 12V power point
- Remote Keyless Entry w/Integrated Key Transmitter, Illuminated Entry and Panic Button
- Trip Computer- 2 Seatback Storage Pockets- 5 12V DC Power Outlets
- 60-40 Folding Split-Bench Front Facing FlexFold Flip Forward Cushion/Seatback Rear Seat
- Analog Display- Cruise Control w/Steering Wheel Controls
- Day-Night Auto-Dimming Rearview Mirror- Delayed Accessory Power
- Dual Zone Front Automatic Air Conditioning- Fade-To-Off Interior Lighting
- Front And Rear Map Lights- Front Cupholder- Full Cloth Headliner
- Full Floor Console w/Locking Storage, Full Overhead Console w/Storage and 5 12V DC Power Outlets
- Glove Box- HVAC -inc: Underseat Ducts and Console Ducts
- Instrument Panel Bin, Covered Dashboard Storage, Driver / Passenger And Rear Door Bins and Locking 2nd Row Underseat Storage
- Interior Trim -inc: Chrome/Metal-Look Interior Accents - Keypad- Leather Steering Wheel
- Manual Adjustable Rear Head Restraints- Manual Tilt/Telescoping Steering Column
- Outside Temp Gauge- Perimeter Alarm- Rear Center Armrest- Rear Cupholder
- Securilock Anti-Theft Ignition (pats) Engine Immobilizer- Systems Monitor
- Underhood And Pickup Cargo Box Lights- Urethane Gear Shifter Material

Mechanical

- Engine: 6.2L 2-Valve SOHC EFI NA V8 Flex-Fuel
- Transmission: TorqShift 6-Speed Automatic w/OD+ -inc: SelectShift, range select and tow haul feature
- 3.73 Axle Ratio- 35 Gal. Fuel Tank
- 4-Wheel Disc Brakes w/4-Wheel ABS, Front And Rear Vented Discs, Brake Assist and Hill Hold Control
- 6680# Maximum Payload
- 72-Amp/Hr 650CCA Maintenance-Free Battery w/Run Down Protection
- Auto Locking Hubs
- Class V Towing Equipment -inc: Hitch, Brake Controller and Trailer Sway Control
- Electronic Transfer Case- Extra Heavy Duty 200-Amp Alternator- Firm Suspension
- Front And Rear Anti-Roll Bars- Front Suspension w/Coil Springs

Front and Rear Air Ride Seats - Front Suspension w/Coil Springs

- GVWR: 14,000 lb Payload Package- HD Shock Absorbers
 - Hydraulic Power-Assist Steering- Leaf Rear Suspension w/Leaf Springs
 - Part-Time Four-Wheel Drive- Single Stainless Steel Exhaust- Trailer Wiring Harness
 - Transmission w/Oil Cooler
-

King of Cars and Trucks

njtrucking.com

856-693-3181

1229 Broadway

Westville, New Jersey 08093

© 2024 AutoRevo - All rights reserved. - Powered by [AutoRevo](#)