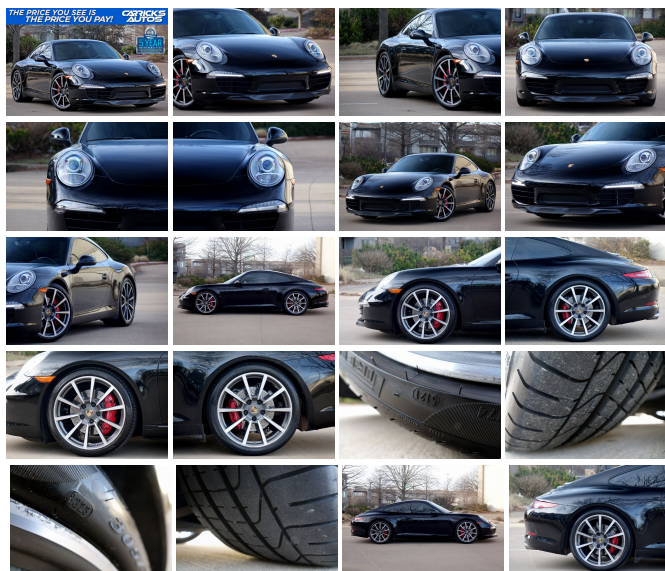


2015 Porsche 911 Carrera S* Sport Chrono* 7-Speed Manual* Sunroof**

View this car on our website at carricksautos.com/6939195/ebrochure



Our Price **\$80,911**

Specifications:

Year:	2015
VIN:	WP0AB2A93FS125854
Make:	Porsche
Stock:	125854A
Model/Trim:	911 Carrera S* Sport Chrono* 7-Speed Manual* Sunroof**
Condition:	Pre-Owned
Body:	Coupe
Exterior:	Black
Engine:	ENGINE: 3.8L H-6 DOHC (430 HP)
Interior:	Black Leather
Transmission:	TRANSMISSION: 7-SPEED MANUAL GEARBOX
Mileage:	34,192
Drivetrain:	Rear Wheel Drive
Economy:	City 19 / Highway 27

20" Carrera Classic Wheels, Brushed Aluminum Dashboard Trim, Brushed Aluminum Gear Lever, Brushed Aluminum Interior Package (EEM), Electric Slide/Tilt Sunroof, Heated Seats, High intensity discharge headlights: Bi-Xenon, Leather steering wheel, Navigation System, Seat Ventilation, Sport Chrono Package, Sport Seats w/Electric Backrest, SportDesign Steering Wheel.

Recent Arrival! Black RWD 7-Speed 3.8L 6-Cylinder DOHC

Awards:

* JD Power Initial Quality Study (IQS) * 2015 KBB.com Brand Image Awards

Carrick's Autos is a Five Star Dealer located in Plano, Texas (suburb of Dallas) with a very simple philosophy: Take Care of the customer. We sell clean, well-maintained autos at a low margin with a "no stress" pricing strategy in a "No Pressure" environment. We hand pick each vehicle and have each one inspected by a certified mechanic prior to placing the vehicle on the market to ensure our customer's satisfaction. We save you money in every way that we can, and you can rest assured that you have received the best price and service on your purchases. We offer full-service warranties and financing to fit all types of buyers. We are a family owned business with Mark (father) and Patrick (son). Call us right now and set an appointment to see your next automobile!

Our Location :



Installed Options

Interior

- 3 12V DC Power Outlets
- 4-Way Power Passenger Seat -inc: Power Recline, Height Adjustment and Manual Fore/Aft Movement
- 50-50 Folding Bucket Front Facing Fold Forward Seatback Leather Rear Seat
- Air Filtration- Analog Display- Cargo Features -inc: Spare Tire Mobility Kit
- Cargo Space Lights- Carpet Floor Trim- Cruise Control- Day-Night Rearview Mirror
- Delayed Accessory Power- Driver And Passenger Door Bins
- Driver And Passenger Visor Vanity Mirrors w/Driver And Passenger Illumination
- Driver Foot Rest- Driver Seat- Dual Zone Front Automatic Air Conditioning
- Engine Immobilizer- FOB Controls -inc: Cargo Access and Windows
- Fade-To-Off Interior Lighting- Fixed Rear Windows- Front Center Armrest
- Front Cupholder- Front Map Lights- Front Partial Leather Seat Trim
- Full Alcantara Simulated Suede Headliner
- Full Carpet Floor Covering -inc: Carpet Front And Rear Floor Mats
- Full Floor Console w/Covered Storage, Mini Overhead Console, Rear Console w/Storage and 3 12V DC Power Outlets
- Gauges -inc: Speedometer, Odometer, Oil Pressure, Engine Coolant Temp, Tachometer, Oil Level, Oil Temperature, Trip Odometer and Trip Computer
- HomeLink Garage Door Transmitter- Illuminated Locking Glove Box
- Integrated Navigation System
- Interior Trim -inc: Metal-Look Instrument Panel Insert, Metal-Look Door Panel Insert, Metal-Look Console Insert and Metal-Look Interior Accents
- Leather Door Trim Insert- Leather Steering Wheel
- Leather/Metal-Look Gear Shifter Material- Manual Tilt/Telescoping Steering Column
- Outside Temp Gauge- Perimeter Alarm
- Power 1st Row Windows w/Driver And Passenger 1-Touch Up/Down
- Power Door Locks w/Autolock Feature- Power Front Floor Plates

Option Packages

Factory Installed Packages

ENGINE: 3.8L H-6 DOHC (430 HP)

TRANSMISSION: 7-SPEED MANUAL GEARBOX

-inc: dual-mass flywheel, self-adjusting clutch and stationary management w/hold function

BRUSHED ALUMINUM CENTER CONSOLE TRIM

\$300

BRUSHED ALUMINUM INTERIOR PACKAGE (EEM)

-inc: Brushed Aluminum Dashboard Trim, Brushed Aluminum Gear Lever

\$840

ELECTRIC SLIDE/TILT SUNROOF

\$1,490

HEATED SEATS

\$690

PASM SPORTS SUSPENSION (-20MM)

\$890

SEAT VENTILATION

\$2,200

- Power Door Locks w/AUTOLOCK Feature- Power Fuel Flap Locking Type
- Redundant Digital Speedometer
- Remote Keyless Entry w/Integrated Key Transmitter, 2 Door Curb/Courtesy, Illuminated Entry and Illuminated Ignition Switch
- Remote Releases -Inc: Power Cargo Access
- Sport Seats w/Electric Backrest -inc: height adjustment and mechanical adjustment of fore/aft position
- Trip Computer- Valet Function

Exterior

- Tires: P245/35ZR20 Fr & P295/30ZR20 Rr
- Wheels: 8.5J x 20" Fr/ 11J x 20" Rr Light Alloy
- Black Side Windows Trim and Black Rear Window Trim - Body-Colored Door Handles
- Body-Colored Front Bumper- Body-Colored Power Heated Side Mirrors w/Manual Folding
- Body-Colored Rear Bumper- Clearcoat Paint- Fixed Rear Window w/Defroster
- Galvanized Steel/Aluminum Panels- LED Brakelights- Light Tinted Glass
- Perimeter/Approach Lights- Power Spoiler
- Projector Beam High Intensity Low/High Beam Daytime Running Auto-Leveling Headlamps w/Washer and Delay-Off
- Rain Detecting Variable Intermittent Wipers w/Heated Jets - Rear Fog Lamps
- Spare Tire Mobility Kit- Wheels w/Silver Accents w/Locks

Safety

- 3 12V DC Power Outlets
- 4-Way Power Passenger Seat -inc: Power Recline, Height Adjustment and Manual Fore/Aft Movement
- 50-50 Folding Bucket Front Facing Fold Forward Seatback Leather Rear Seat
- Air Filtration- Analog Display- Cargo Features -inc: Spare Tire Mobility Kit
- Cargo Space Lights- Carpet Floor Trim- Cruise Control- Day-Night Rearview Mirror
- Delayed Accessory Power- Driver And Passenger Door Bins
- Driver And Passenger Visor Vanity Mirrors w/Driver And Passenger Illumination
- Driver Foot Rest- Driver Seat- Dual Zone Front Automatic Air Conditioning
- Engine Immobilizer- FOB Controls -inc: Cargo Access and Windows
- Fade-To-Off Interior Lighting- Fixed Rear Windows- Front Center Armrest
- Front Cupholder- Front Map Lights- Front Partial Leather Seat Trim
- Full Alcantara Simulated Suede Headliner
- Full Carpet Floor Covering -inc: Carpet Front And Rear Floor Mats
- Full Floor Console w/Covered Storage, Mini Overhead Console, Rear Console w/Storage and 3 12V DC Power Outlets
- Gauges -inc: Speedometer, Odometer, Oil Pressure, Engine Coolant Temp, Tachometer, Oil Level, Oil Temperature, Trip Odometer and Trip Computer
- HomeLink Garage Door Transmitter- Illuminated Locking Glove Box
- Integrated Navigation System
- Interior Trim -inc: Metal-Look Instrument Panel Insert, Metal-Look Door Panel Insert, Metal-Look Console Insert and Metal-Look Interior Accents
- Leather Door Trim Insert- Leather Steering Wheel
- Leather/Metal-Look Gear Shifter Material- Manual Tilt/Telescoping Steering Column
- Outside Temp Gauge- Perimeter Alarm
- Power 1st Row Windows w/Driver And Passenger 1-Touch Up/Down
- Power Door Locks w/Autolock Feature- Power Fuel Flap Locking Type
- Redundant Digital Speedometer
- Remote Keyless Entry w/Integrated Key Transmitter, 2 Door Curb/Courtesy, Illuminated Entry and Illuminated Ignition Switch
- Remote Releases -Inc: Power Cargo Access
- Sport Seats w/Electric Backrest -inc: height adjustment and mechanical adjustment of fore/aft position
- Trip Computer- Valet Function

Mechanical

- Engine: 3.8L H-6 Direct Fuel Injection (400 HP)- 16.9 Gal. Fuel Tank- 175 Amp Alternator
- 3.44 Axle Ratio
- 4-Wheel Disc Brakes w/4-Wheel ABS, Front And Rear Vented Discs, Brake Assist, Hill Hold Control and Electric Parking Brake
- 70-Amp/Hr 450CCA Maintenance-Free Battery w/Run Down Protection
- Automatic w/Driver Control Ride Control Adaptive Suspension
- Dual Stainless Steel Exhaust w/Polished Tailpipe Finisher
- Electric Power-Assist Speed-Sensing Steering
- Electro-Mechanical Limited Slip Differential- Engine Auto Stop-Start Feature
- Engine Oil Cooler- Front And Rear Anti-Roll Bars- Gas-Pressurized Shock Absorbers
- Multi-Link Rear Suspension w/Coil Springs- Rear-Wheel Drive
- Strut Front Suspension w/Coil Springs- Transmission w/Oil Cooler
- Transmission: 7-Speed Manual Gearbox -inc: dual-mass flywheel, self-adjusting clutch and

\$840

SIRIUSXM SAT RADIO RECEIVER

\$750

SPORT CHRONO PACKAGE

\$2,370

SPORTDESIGN STEERING WHEEL

\$490

WHEEL CENTER W/FULL-COLOR PORSCHE CREST

\$185

BLACK

BLACK, FRONT LEATHER SEAT TRIM

ELECTRICAL 4-WAYS SPORTS SEATS PLUS

\$800

WHEELS: 20" CARRERA CLASSIC

\$1,170

Option Packages Total

\$10,815

Carrick's Autos

carricksautos.com

972-945-1220

1501 Capital Avenue

Plano, TX 75074

© 2024 AutoRevo - All rights reserved. - Powered by AutoRevo