



2018 Chevrolet Suburban Premier

Our Price \$46,299

View this vehicle on our website at parksdeals.com

Parks Chevrolet, Inc.

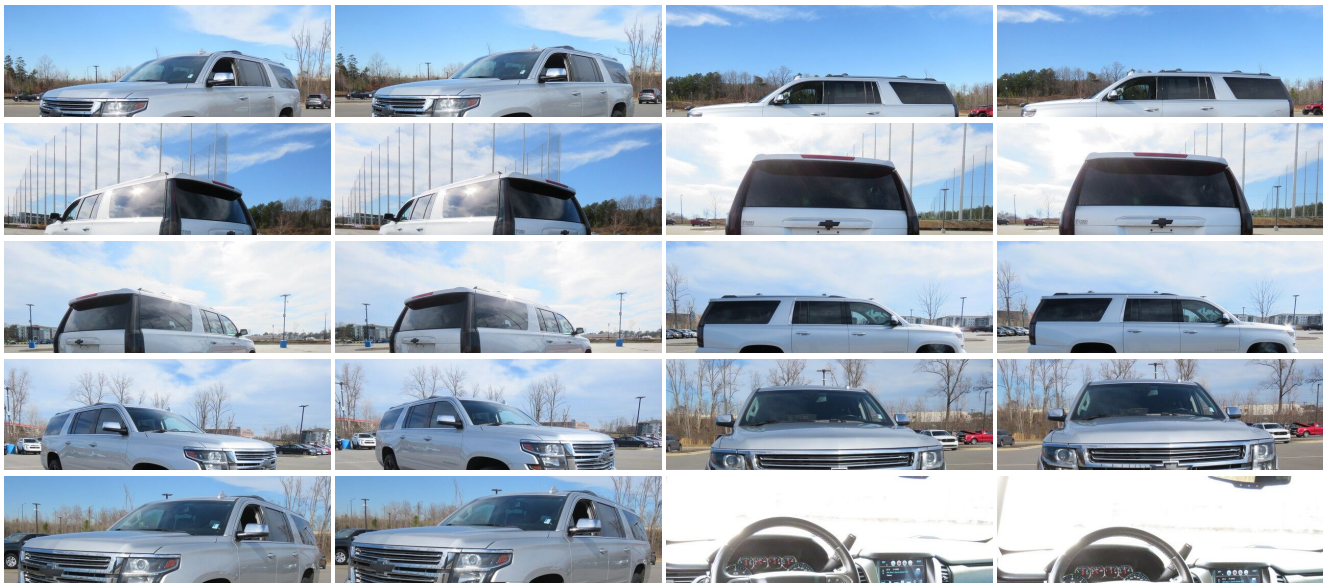
[833-825-2763](tel:833-825-2763)

615 NC-66 South, Kernersville, NC 27284

Photos

Details

Contact



Specifications:

Year:	2018
VIN:	1GNSCJJC6JR123271
Make:	Chevrolet
Stock:	154183C
Model/Trim:	Suburban Premier
Condition:	Pre-Owned
Body:	SUV
Exterior:	Silver Ice Metallic
Engine:	ENGINE, 5.3L V8 ECOTEC3 WITH ACTIVE FUEL MANAGEMENT, DIRECT INJECTION AND VARIABLE VALVE TIMING
Interior:	Jet Black Leather
Mileage:	91,093
Drivetrain:	Rear Wheel Drive
Economy:	City 16 / Highway 23

Vehicle Description

2018 Chevrolet Suburban Premier

10 Speakers, 12-Volt Auxiliary Power Outlet (5), 1st & 2nd Row Color-Keyed Carpeted Floor Mats, 3rd Row 60/40 Power Fold Split-Bench, 4-Wheel Antilock Disc Brakes, 6-Way Power Front Passenger Seat Adjuster, ABS brakes, Auto-Dimming Inside Rear-View Mirror, Automatic temperature control, Black Assist Steps, Blind spot sensor: Lane Change Alert with Side Blind Zone Alert warning, Color-Keyed Carpeting Floor Covering, Driver Inboard & Front Passenger Airbags, Electronic Cruise Control w/Set & Resume Speed, Enhanced Driver Alert Package, Exterior Parking Camera Rear, Floor Console w/Storage Area, Fog Lamps, Forward Collision Alert, Front & Rear Park Assist, Front dual zone A/C, Hands Free Power Liftgate, HD Radio, Heated 2nd Row Outboard Seats, Heated Leather Wrapped Steering Wheel, Intellibeam Headlamps w/Automatic High Beam On/Off, Lane Change Alert w/Side Blind Zone Alert, Lane Keep Assist w/Lane Departure Warning, Low Speed Forward Automatic Braking, Magnetic Ride Control Suspension Package, Memory seat, Memory Settings, Navigation System, OnStar Basic Plan For 5 Years, Passive Entry System, Power Folding & Adjustable Heated Outside Mirrors, Power Liftgate, Power Release 2nd Row Bucket Seats, Power Tilt & Telescoping Steering Column, Power-Adjustable Accelerator & Brake Pedals, Preferred Equipment Group 1LZ, Push Button Keyless Start, Rain sensing wipers, Rear Cross-Traffic Alert, Rear window defroster, Remote Vehicle Start, Roof-Mounted Luggage Rack Side Rails, Safety Alert Seat, SiriusXM Satellite Radio, Universal Home Remote, Wireless Charging. Clean CARFAX.

Call 704.288.0662 to check on the availability of this vehicle and schedule a private showing or shop 24 hours a day @ WWW.PARKSCHARLOTTE.COM. *All prices are plus tax, tag, title, and documentation. All vehicles are fully reconditioned by a Master ASE Factory Trained Certified Technician.

Awards:

* 2018 KBB.com 10 Most Awarded Brands

Installed Options

Interior

- Seats, front bucket with Perforated leather-appointed heated and ventilated seat cushions 12-way power driver and passenger seat includes 6-way power cushions, driver seat 2-position memory, 4-way power lumbar control and power recline
- Seat trim, perforated leather-appointed- Seat adjuster, front passenger 6-way power
- Seats, heated and ventilated driver and front passenger
- Memory settings recalls presets for driver power seat adjuster and pedals (Also includes memory presets for outside rearview mirrors and power steering column.)
- Seats, second row bucket, power release- Seats, third row 60/40 split-bench, power fold
- Console, floor with storage area, cup holders and auxiliary jack
- Floor mats, color-keyed carpeted first and second row, removable
- Steering wheel controls, mounted audio and cruise controls includes Driver Information Center controls
- Door locks, power programmable with lockout protection and delayed locking
- Passive Entry System includes (AQQ) Remote Keyless Entry
- Cruise control, electronic with set and resume speed (Not included when (Y66) Adaptive Cruise Control is ordered.)
- Theft deterrent, electrical, unauthorized entry- Keyless start, push button
- Seats, heated second row outboard seats - Floor covering, color-keyed carpeting

Option Packages

Factory Installed Packages

ENGINE, 5.3L V8 ECOTEC3 WITH ACTIVE FUEL MANAGEMENT, DIRECT INJECTION AND VARIABLE VALVE TIMING

includes aluminum block construction (355 hp [265 kW] @ 5600 rpm, 383 lb-ft of torque [518 N-m] @ 4100 rpm)

- Steering column, power tilt and telescopic
- Steering wheel, heated, leather-wrapped and color-keyed with theft-deterrent locking feature
- Driver Information Center, 4.2" diagonal multi-color (Not available with (UV6) Head Up Display.)
- Remote vehicle start
- Universal Home Remote includes garage door opener, programmable
- Pedals, power-adjustable for accelerator and brake
- Windows, power, with Express-Down and Express-Up on front doors and lock out features
- Climate control, tri-zone automatic with individual climate settings for driver, right-front passenger and rear passengers
- Defogger, rear-window electric- Power outlet, 110-volt
- Power outlets, 5 auxiliary, 12-volt includes outlets in the instrument panel, console, back of console, 1 in 3rd row and 1 in cargo area
- Mirror, inside rearview auto-dimming
- Conversation mirror (Deleted when (UTT) Theft Protection Package is ordered.)
- Assist handles, 1st row passenger and 2nd row outboard seats
- Lighting, interior with dome light, driver- and passenger-side door switch with delayed entry feature, cargo lights, door handle or Remote Keyless Entry-activated illuminated entry and map lights in front and second seat positions
- Cargo management system- Cargo net
- Chevrolet Connected Access with 10 years of standard connectivity which enables services such as, Vehicle Diagnostics, Dealer Maintenance Notification, Chevrolet Smart Driver, Marketplace and more; EFFECTIVE WITH SALES STARTING 5/1/2018. (Limitations apply. Not transferable. Standard connectivity available to original purchaser for ten years from the date of initial vehicle purchase for model year 2018 or newer Chevrolet vehicles. See onstar.com for details and further plan limitations. Connected Access does not include emergency or security services. Availability and additional services enabled by Connected Access are subject to change.)

Exterior

- Wheels, 20" x 9" (50.8 cm x 22.9 cm) polished-aluminum
- Tires, P275/55R20 all-season, blackwall- Tire, spare P265/70R17 all-season, blackwall
- Wheel, full-size spare, 17" (43.2 cm) steel
- Assist steps, Black (Premier includes chrome accent strip) (Deleted when (RVQ) assist step kit, Black, LPO, (VXH) assist step kit, Chrome, LPO or (BRS) power-retractable assist steps are ordered.)
- SiriusXM NavTraffic. Avoid congestion before you reach it by enhancing your vehicle's navigation or entertainment system with SiriusXM NavTraffic. With detailed information on traffic speed, accidents, construction, road closures and more, you will get to your destination faster and more easily than ever before. (SiriusXM Satellite Radio and NavTraffic subscriptions are sold separately or as a package after trial period. If you decide to continue service after your trial, the subscription plan you choose will automatically renew thereafter and you will be charged according to your chosen payment method at then-current rates. Fees and taxes apply. To cancel you must call us at 1- 866-635-2349. See our Customer Agreement for complete terms at www.siriusxm.com. All fees and programming subject to change. NavTraffic available only in select markets. For more information, see www.siriusxm.com/navtraffic.)
- Tire carrier, lockable outside spare, winch-type mounted under frame at rear
- Active aero shutters, front- Fascia, front body-color
- Fascia, rear body-color (Includes trailer hitch closeout.)
- Luggage rack side rails, roof-mounted (Includes bright accent.)
- Moldings, body-color body-side- Headlamps, high intensity discharge
- Headlamps, IntelliBeam, automatic high beam on/off- Fog lamps
- Mirrors, outside heated power-adjustable, power-folding and driver-side auto-dimming with integrated turn signal indicators and ground illumination
- Glass, deep-tinted- Glass, acoustic, laminated- Windshield, solar absorbing
- Wipers, front intermittent, Rainsense- Wiper, rear intermittent with washer
- Liftgate, hands free, power

Safety

- Seats, front bucket with Perforated leather-appointed heated and ventilated seat cushions 12-way power driver and passenger seat includes 6-way power cushions, driver seat 2-position memory, 4-way power lumbar control and power recline
- Seat trim, perforated leather-appointed- Seat adjuster, front passenger 6-way power
- Seats, heated and ventilated driver and front passenger
- Memory settings recalls presets for driver power seat adjuster and pedals (Also includes memory presets for outside rearview mirrors and power steering column.)
- Seats, second row bucket, power release- Seats, third row 60/40 split-bench, power fold
- Console, floor with storage area, cup holders and auxiliary jack
- Floor mats, color-keyed carpeted first and second row, removable
- Steering wheel controls, mounted audio and cruise controls includes Driver Information Center controls
- Door locks, power programmable with lockout protection and delayed locking
- Passive Entry System includes (AQQ) Remote Keyless Entry
- Cruise control, electronic with set and resume speed (Not included when (Y66) Adaptive Cruise Control is ordered.)

- Theft deterrent, electrical, unauthorized entry- Keyless start, push button
- Seats, heated second row outboard seats - Floor covering, color-keyed carpeting
- Steering column, power tilt and telescopic
- Steering wheel, heated, leather-wrapped and color-keyed with theft-deterrent locking feature
- Driver Information Center, 4.2" diagonal multi-color (Not available with (UV6) Head Up Display.)
- Remote vehicle start
- Universal Home Remote includes garage door opener, programmable
- Pedals, power-adjustable for accelerator and brake
- Windows, power, with Express-Down and Express-Up on front doors and lock out features
- Climate control, tri-zone automatic with individual climate settings for driver, right-front passenger and rear passengers
- Defogger, rear-window electric- Power outlet, 110-volt
- Power outlets, 5 auxiliary, 12-volt includes outlets in the instrument panel, console, back of console, 1 in 3rd row and 1 in cargo area
- Mirror, inside rearview auto-dimming
- Conversation mirror (Deleted when (UTT) Theft Protection Package is ordered.)
- Assist handles, 1st row passenger and 2nd row outboard seats
- Lighting, interior with dome light, driver- and passenger-side door switch with delayed entry feature, cargo lights, door handle or Remote Keyless Entry-activated illuminated entry and map lights in front and second seat positions
- Cargo management system- Cargo net
- Chevrolet Connected Access with 10 years of standard connectivity which enables services such as, Vehicle Diagnostics, Dealer Maintenance Notification, Chevrolet Smart Driver, Marketplace and more; EFFECTIVE WITH SALES STARTING 5/1/2018. (Limitations apply. Not transferable. Standard connectivity available to original purchaser for ten years from the date of initial vehicle purchase for model year 2018 or newer Chevrolet vehicles. See onstar.com for details and further plan limitations. Connected Access does not include emergency or security services. Availability and additional services enabled by Connected Access are subject to change.)

Mechanical

- Engine, 5.3L V8 EcoTec3 with Active Fuel Management, Direct Injection and Variable Valve Timing includes aluminum block construction (355 hp [265 kW] @ 5600 rpm, 383 lb-ft of torque [518 N-m] @ 4100 rpm)
 - Transmission, 6-speed automatic, electronically controlled with overdrive and tow/haul mode
 - E85 FlexFuel capable (Included and only available with Fleet or Government order types.)
 - Rear axle, 3.08 ratio (Not available with (NHT) Max Trailering Package.)
 - Suspension Package, Magnetic Ride Control road sensing electronically controlled shock absorbers
 - Differential, heavy-duty locking rear- Rear wheel drive
 - Cooling, external engine oil cooler, heavy-duty air-to-oil integral to driver side of radiator
 - Cooling, auxiliary transmission oil cooler, heavy-duty air-to-oil
 - Battery, 720 cold cranking amps with 80 amp hour rating - Alternator, 150 amps
 - Trailering equipment includes trailering hitch platform, 7-wire harness with independent fused trailering circuits mated to a 7-way sealed connector and 2" trailering receiver
 - Trailer sway control- GVWR, 7300 lbs. (3311 kg) (Requires 2WD model.)
 - Suspension, front coil-over-shock with stabilizer bar
 - Suspension, rear multi-link with coil springs- Hill Start Assist- Steering, power
-

Parks Chevrolet, Inc.

Parks Chevrolet, Inc.

View this car on our website at parksdeals.com/6938862

Website: parksdeals.com

Phone: 833-825-2763

Map: [615 NC-66 South, Kernersville, NC 27284](#)

