

## 2015 Dodge Ram 1500 Big Horn

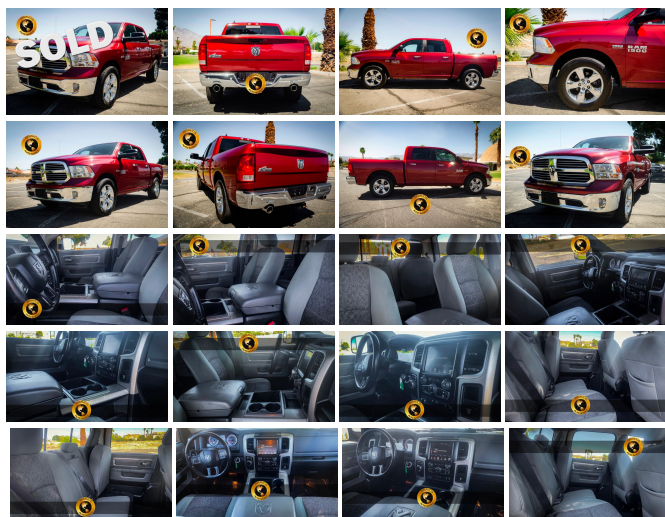
View this car on our website at [bravosautoworld.com/6938825/ebrochure](http://bravosautoworld.com/6938825/ebrochure)



Our Price **\$29,995**

### Specifications:

<b>Year:</b>	2015
<b>VIN:</b>	1C6RR6LT2FS565988
<b>Make:</b>	Dodge
<b>Stock:</b>	JK330211
<b>Model/Trim:</b>	Ram 1500 Big Horn
<b>Condition:</b>	Pre-Owned
<b>Body:</b>	Pickup Truck
<b>Exterior:</b>	Bright Red
<b>Engine:</b>	ENGINE: 5.7L V8 HEMI MDS VVT
<b>Interior:</b>	Diesel Gray/Black Cloth
<b>Mileage:</b>	59,745
<b>Drivetrain:</b>	Rear Wheel Drive
<b>Economy:</b>	City 15 / Highway 22



2015 Dodge Ram 1500 Big Horn

Bravo's Auto World - (760) 409-7781 - View this car on our website at [bravosautoworld.com/6938825/ebrochure](http://bravosautoworld.com/6938825/ebrochure)

## Our Location :



2015 Dodge Ram 1500 Big Horn

Bravo's Auto World - (760) 409-7781 - View this car on our website at [bravosautoworld.com/6938825/ebrochure](http://bravosautoworld.com/6938825/ebrochure)

## Installed Options

### Interior

- 4-Way Driver Seat -inc: Manual Recline and Fore/Aft Movement
- 4-Way Passenger Seat -inc: Manual Recline and Fore/Aft Movement
- 40/20/40 Split Bench Seat - Analog Display
- Armrests w/Storage and Rear Center Armrest- Cargo Area Concealed Storage- Compass
- Cruise Control w/Steering Wheel Controls- Day-Night Rearview Mirror
- Delayed Accessory Power- Electronic Shift- FOB Controls -inc: Cargo Access
- Fade-To-Off Interior Lighting- Front Armrest w/3 Cupholders- Front Map Lights
- Full Carpet Floor Covering -inc: Carpet Front And Rear Floor Mats - Full Cloth Headliner
- Full Folding Bench Front Facing Fold-Up Cushion Rear Seat - GPS Antenna Input
- Gauges -inc: Speedometer, Odometer, Voltmeter, Oil Pressure, Engine Coolant Temp, Tachometer, Oil Temperature, Transmission Fluid Temp, Engine Hour Meter, Trip Odometer and Trip Computer
- Glove Box- HVAC -inc: Underseat Ducts and Console Ducts
- Instrument Panel Bin, Dashboard Storage, Driver / Passenger And Rear Door Bins and 2nd Row Underseat Storage
- Interior Trim -inc: Deluxe Sound Insulation, Metal-Look Instrument Panel Insert, Metal-Look Door Panel Insert and Chrome/Metal-Look Interior Accents
- Manual Adjustable Front Head Restraints and Manual Adjustable Rear Head Restraints
- Manual Air Conditioning- Manual Tilt Steering Column- Mini Overhead Console
- Outside Temp Gauge- Passenger Visor Vanity Mirror- Pickup Cargo Box Lights
- Power 1st Row Windows w/Driver And Passenger 1-Touch Up/Down
- Power Door Locks w/Autolock Feature- Power Rear Windows- Rear Cupholder
- Redundant Digital Speedometer
- Remote Keyless Entry w/Integrated Key Transmitter, Illuminated Entry and Panic Button
- Rotary Shifter- Sentry Key Engine Immobilizer- Storage Tray- Systems Monitor
- Trip Computer- Urethane Gear Shifter Material- Valet Function- Vinyl Door Trim Insert

### Exterior

- Fog Lamps- Front License Plate Bracket

- Fully Automatic Aero-Composite Halogen Headlamps w/Delay-Off
- Galvanized Steel/Aluminum Panels- Goodyear Brand Tires- Power Rear Window
- Power Side Mirrors w/Manual Folding- Regular Box Style
- Spare Tire Stored Underbody w/Crankdown- Tailgate Rear Cargo Access
- Tailgate/Rear Door Lock Included w/Power Door Locks- Tip Start
- Tires: P275/60R20 BSW AS- Variable Intermittent Wipers
- Wheels: 20" x 8" Aluminum Chrome Clad- Exterior Mirrors w/Heating Element
- Deep Tinted Glass- Clearcoat Paint- Chrome Rear Step Bumper
- Chrome Front Bumper w/Body-Colored Rub Strip/Fascia Accent- Chrome Door Handles
- Center Hub- Cargo Lamp w/High Mount Stop Light
- Black Side Windows Trim and Black Front Windshield Trim - Black Exterior Mirrors
- Aluminum Spare Wheel- Active Grille Shutters

## Safety

- 4-Way Driver Seat -inc: Manual Recline and Fore/Aft Movement
- 4-Way Passenger Seat -inc: Manual Recline and Fore/Aft Movement
- 40/20/40 Split Bench Seat- Analog Display
- Armrests w/Storage and Rear Center Armrest- Cargo Area Concealed Storage- Compass
- Cruise Control w/Steering Wheel Controls- Day-Night Rearview Mirror
- Delayed Accessory Power- Electronic Shift- FOB Controls -inc: Cargo Access
- Fade-To-Off Interior Lighting- Front Armrest w/3 Cupholders- Front Map Lights
- Full Carpet Floor Covering -inc: Carpet Front And Rear Floor Mats - Full Cloth Headliner
- Full Folding Bench Front Facing Fold-Up Cushion Rear Seat - GPS Antenna Input
- Gauges -inc: Speedometer, Odometer, Voltmeter, Oil Pressure, Engine Coolant Temp, Tachometer, Oil Temperature, Transmission Fluid Temp, Engine Hour Meter, Trip Odometer and Trip Computer
- Glove Box- HVAC -inc: Underseat Ducts and Console Ducts
- Instrument Panel Bin, Dashboard Storage, Driver / Passenger And Rear Door Bins and 2nd Row Underseat Storage
- Interior Trim -inc: Deluxe Sound Insulation, Metal-Look Instrument Panel Insert, Metal-Look Door Panel Insert and Chrome/Metal-Look Interior Accents
- Manual Adjustable Front Head Restraints and Manual Adjustable Rear Head Restraints
- Manual Air Conditioning- Manual Tilt Steering Column- Mini Overhead Console
- Outside Temp Gauge- Passenger Visor Vanity Mirror- Pickup Cargo Box Lights
- Power 1st Row Windows w/Driver And Passenger 1-Touch Up/Down
- Power Door Locks w/Autolock Feature- Power Rear Windows- Rear Cupholder
- Redundant Digital Speedometer
- Remote Keyless Entry w/Integrated Key Transmitter, Illuminated Entry and Panic Button
- Rotary Shifter- Sentry Key Engine Immobilizer- Storage Tray- Systems Monitor
- Trip Computer- Urethane Gear Shifter Material- Valet Function- Vinyl Door Trim Insert

## Mechanical

- 160 Amp Alternator- 1850# Maximum Payload- 26 Gallon Fuel Tank
- 3.21 Rear Axle Ratio
- 4-Wheel Disc Brakes w/4-Wheel ABS, Front Vented Discs, Brake Assist and Hill Hold Control
- 50 State Emissions- 730CCA Maintenance-Free Battery- Class IV Receiver Hitch
- Electric Power-Assist Steering- Engine Oil Cooler- Engine: 3.6L V6 24V VVT
- Front And Rear Anti-Roll Bars- GVWR: 6,800 lbs- HD Shock Absorbers
- Multi-Link Rear Suspension w/Coil Springs- Rear-Wheel Drive
- Short And Long Arm Front Suspension w/Coil Springs- Single Stainless Steel Exhaust
- Towing Equipment -inc: Trailer Sway Control- Trailer Wiring Harness
- Transmission w/Driver Selectable Mode and Oil Cooler
- Transmission: 8-Speed Automatic 845RE

## Option Packages

### Factory Installed Packages

ENGINE: 5.7L V8 HEMI MDS VVT  
-inc: Electronically Controlled Throttle, Heavy Duty Engine Cooling, GVWR: 6,900 lbs, Next Generation Engine Controller, Hemi Badge, Heavy Duty Transmission Oil Cooler

\$1,150

Option Packages Total

\$1,150



Bravo's Auto World

[bravosautoworld.com](http://bravosautoworld.com)

(760) 409-7781

68750 RAMON RD

Cathedral, California 92234

© 2021 AutoRevo - All rights reserved. - Powered by [AutoRevo](#)