

# 2021 Jeep Wrangler Unlimited Rubicon 4X4 SKY TOP,DUPONT KEVLAR,LIFT,LED'S

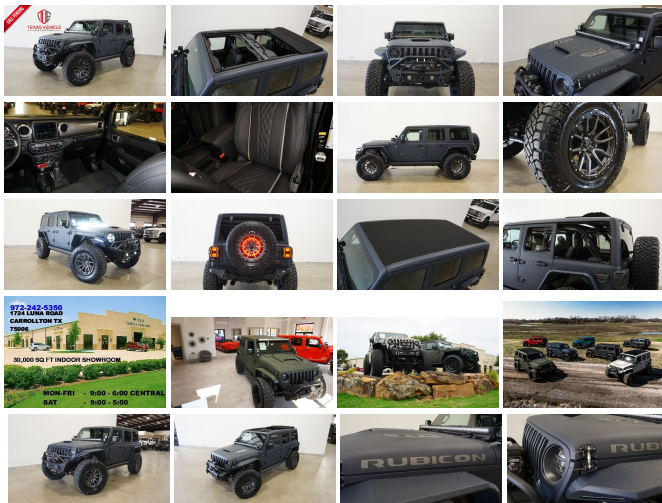
View this car on our website at [tveauto.com/6937377/ebrochure](http://tveauto.com/6937377/ebrochure)



Our Price **\$88,900**

## Specifications:

<b>Year:</b>	2021
<b>VIN:</b>	1C4HJXFG4MW633407
<b>Make:</b>	Jeep
<b>Stock:</b>	633407
<b>Model/Trim:</b>	Wrangler Unlimited Rubicon 4X4 SKY TOP,DUPONT KEVLAR,LIFT,LED'S
<b>Condition:</b>	Pre-Owned
<b>Body:</b>	SUV
<b>Exterior:</b>	Blue
<b>Engine:</b>	ENGINE: 3.6L V6 24V VVT ETORQUE UPG I
<b>Interior:</b>	Black Leather
<b>Transmission:</b>	TRANSMISSION: 8-SPEED AUTOMATIC (850RE)
<b>Mileage:</b>	83
<b>Drivetrain:</b>	4 Wheel Drive
<b>Economy:</b>	City 17 / Highway 23



NATION WIDE FINANCING

SUBMIT CREDIT APP [WWW.TVEAUTO.COM](http://WWW.TVEAUTO.COM)

OR CALL 972-242-5350

**"FERRARI NART BLUE EDITION"**

CUSTOM BUILT **KEVLAR** 2021 JEEP  
WRANGLER JL UNLIMITED RUBICON 4X4  
WITH 25R PACKAGE

**UPGRADES INCLUDE:**

- \* FERRARI NART BLUE KEVLAR COATING WITH ANTHRACITE ACCENTS
- \* SKY ONE-TOUCH POWER TOP WITH REMOVABLE REAR QUARTER WINDOWS
- \* CUSTOM ALEA BLACK LEATHER WITH BLUE STITCHING
- \* FACTORY REMOTE START
- \* REMOTE PROXIMITY KEYLESS ENTRY
- \* COLD WEATHER GROUP
- \* LED LIGHTING GROUP
- \* SAFETY GROUP
- \* FACTORY 8.4 INCH TOUCH SCREEN NAVIGATION WITH HD AM/FM/SIRIUS STEREO & ALPINE PREMIUM AUDIO SYSTEM
- \* FACTORY BACK-UP CAMERA
- \* U-CONNECT
- \* FAB FOURS STUBBY FRONT BUMPER WITH LED FOGLIGHTS
- \* FRONT D-RINGS & ISOLATORS (ANTHRACITE)
- \* SMITTYBILT NEW GEN II "X20" 10,000 LB WATERPROOF AND WIRELESS CONTROL WINCH WITH SYNTHETIC ROPE
- \* FACTOR 55 PROLINK (BLACK)
- \* FACTORY LED HEADLIGHTS
- \* RUGGED RIDGE BLACK HEADLIGHT GUARDS
- \* NEW CUSTOM VENTED HOOD
- \* DRAKE OFF ROAD HOOD LATCHES
- \* ROAD ARMOR STEALTH JL FENDER FLARES
- \* DV8 OFF ROAD FRONT & REAR INNER FENDERS
- \* DURIGON EXPRESS 3.5" LIFT KIT WITH

^ RUBICON EXPRESS 2.5" LIFT KIT WITH  
TERAFLEX FALCON SHOCKS

\* TERAFLEX FALCON STABILIZER KIT

\* VOSWITCH 6 CHANNEL CUSTOM  
INTEGRATED SWITCH PANEL

\* 50" LED LIGHT BAR AND 4 RIGID  
INDUSTRIES DUALY D2 LED PILLAR  
LIGHTS

\* AMP RESEARCH POWERSTEP XL  
RUNNING BOARDS WITH LED LIGHT KIT

\* EVOLUTION 2 BLACK LED TAIL LIGHTS

\* RUGGED RIDGE BLACK TAIL LIGHT  
GUARDS

\* RUGGED RIDGE SPARTACUS HD HINGE  
KIT

\* RUGGED RIDGE LED THIRD BRAKE LIGHT  
RING

\* DV8 OFF ROAD REAR BUMPER  
WITH REAR PARK DISTANCE SENSORS

\* REAR D-RINGS & ISOLATORS  
(ANTHRACITE)

\* MAGNAFLOW BLACK SERIES EXHAUST  
SYSTEM

\* ALL WEATHER FLOOR MATS

\* TAZER JL PROGRAMMER WITH  
SPEEDOMETER CALIBRATION

\* 20" FUEL ANTHRACITE "REBEL 5" WHEELS

\* BRAND NEW NITTO RIDGE GRAPPLER  
37X13.50R/20 TIRES

**WE BUILD EVERY JEEP WITH PRIDE! DO  
NOT HESITATE TO CALL US WITH THIS  
JEEP BUILD. WE CAN MAKE CHANGES TO  
THIS JEEP BUILD OR CUSTOM BUILD ANY  
JEEP TO YOUR PREFERENCE. GIVE US A  
CALL @ 972-242-5350 OR STOP BY FOR A  
TEST DRIVE. 1724 LUNA RD IN  
CARROLLTON - 2 MILES NORTH OF 635**

2021 Jeep Wrangler Unlimited Rubicon 4X4 SKY TOP,DUPONT KEVLAR,LIFT,LED'S  
 Texas Vehicle Exchange - 972-242-5350 - View this car on our website at [veauto.com/6937377/ebrochure](http://veauto.com/6937377/ebrochure)

**Our Location :**



2021 Jeep Wrangler Unlimited Rubicon 4X4 SKY TOP,DUPONT KEVLAR,LIFT,LED'S  
 Texas Vehicle Exchange - 972-242-5350 - View this car on our website at [veauto.com/6937377/ebrochure](http://veauto.com/6937377/ebrochure)

**Installed Options**

**Interior**

- 6-Way Driver Seat -inc: Manual Recline, Height Adjustment, Fore/Aft Movement and Manual Lumbar Support
- Front Seats w/Cloth Back Material and Manual Driver Lumbar
- Full Carpet Floor Covering -inc: Carpet Front And Rear Floor Mats
- Gauges -inc: Speedometer, Odometer, Voltmeter, Oil Pressure, Engine Coolant Temp, Tachometer, Engine Hour Meter, Trip Odometer and Trip Computer
- Power 1st Row Windows w/Driver And Passenger 1-Touch Down
- Power Door Locks w/Autolock Feature
- Power Rear Windows and Removable 3rd Row Windows
- Premium Cloth Low-Back Bucket Seats - Proximity Key For Push Button Start Only
- Remote Keyless Entry w/Integrated Key Transmitter, Illuminated Entry and Panic Button
- Trip Computer- 2 12V DC Power Outlets
- 2 12V DC Power Outlets and 1 120V AC Power Outlet - 2 Seatback Storage Pockets
- 4-Way Passenger Seat -inc: Manual Recline and Fore/Aft Movement
- 60-40 Folding Split-Bench Front Facing Fold Forward Seatback Premium Cloth Rear Seat
- Air Filtration- Analog Appearance- Cargo Space Lights
- Carpet Floor Trim, Carpet And Rubber Mat- Compass
- Cruise Control w/Steering Wheel Controls- Day-Night Rearview Mirror
- Delayed Accessory Power
- Driver And Passenger Visor Vanity Mirrors w/Driver And Passenger Illumination
- Fade-To-Off Interior Lighting- Front And Rear Map Lights
- Front Center Armrest w/Storage
- Full Floor Console w/Locking Storage, 2 12V DC Power Outlets and 1 120V AC Power

**Option Packages**

**Factory Installed Packages**

**ENGINE: 3.6L V6 24V VVT ETORQUE UPG I**  
 -inc: 600 Amp Maintenance Free Battery, 48V Belt Starter Generator, Delete Alternator, Engine Oil Cooler **\$1,750**

**TRANSMISSION: 8-SPEED AUTOMATIC (850RE)**  
**\$1,500**

**8.4" RADIO & PREMIUM AUDIO GROUP**  
 -inc: Off-Road Info Pages, SiriusXM Traffic Plus, Alpine Premium Audio System, HD Radio, Radio: Uconnect 4C Nav w/8.4" Display, For Details, Visit DriveUconnect.com, Rear View Auto Dim Mirror, 1-Year SiriusXM Guardian Trial, 5-Year SiriusXM Travel Link Service, GPS Navigation, 5-Year SiriusXM Traffic Service, SiriusXM Travel Link, 4G LTE Wi-Fi Hot Spot, Emergency/Assistance Call, 8.4" Touchscreen Display **\$1,995**

**COLD WEATHER GROUP**  
 -inc: Heated Steering Wheel, Heated Front Seats **\$995**

## Outlet

- Garage Door Transmitter- HVAC -inc: Console Ducts- Illuminated Front Cupholder
- Illuminated Rear Cupholder
- Instrument Panel Bin, Dashboard Storage, Driver / Passenger And Rear Door Bins
- Interior Trim -inc: Colored Instrument Panel Insert, Metal-Look Door Panel Insert, Metal-Look Console Insert and Metal-Look Interior Accents
- Leather Steering Wheel- Locking Cargo Area Concealed Storage- Locking Glove Box
- Manual Adjustable Front Head Restraints and Foldable Rear Head Restraints
- Manual Tilt/Telescoping Steering Column- Outside Temp Gauge- Perimeter Alarm
- Redundant Digital Speedometer- Sentry Key Engine Immobilizer
- Smart Device Integration- Systems Monitor- Urethane Gear Shifter Material
- Voice Activated Dual Zone Front Automatic Air Conditioning

## Exterior

- Auto On/Off Aero-Composite Halogen Daytime Running Headlamps w/Delay-Off
- Black Front Bumper w/2 Tow Hooks- Black Rear Bumper w/1 Tow Hook
- Front Fog Lamps- Manual Convertible Top w/Fixed Roll-Over Protection
- Tailgate/Rear Door Lock Included w/Power Door Locks
- Tires: LT285/70R17C BSW Off-Road- Wheels: 17" x 7.5" Machined w/Black Pockets
- Aluminum Spare Wheel- Black Door Handles
- Black Power Heated Side Mirrors w/Manual Folding- Black Side Windows Trim
- Black Wheel Well Trim and Black Fender Flares- Body-Color Grille w/Colored Accents
- Clearcoat Paint w/Badging- Conventional Rear Cargo Access- Deep Tinted Glass
- Full-Size Spare Tire Mounted Outside Rear
- Galvanized Steel/Aluminum/Magnesium Panels- Non-Lock Fuel Cap w/o Discriminator
- Removable Rear Window- Variable Intermittent Wipers

## Safety

- 6-Way Driver Seat -inc: Manual Recline, Height Adjustment, Fore/Aft Movement and Manual Lumbar Support
- Front Seats w/Cloth Back Material and Manual Driver Lumbar
- Full Carpet Floor Covering -inc: Carpet Front And Rear Floor Mats
- Gauges -inc: Speedometer, Odometer, Voltmeter, Oil Pressure, Engine Coolant Temp, Tachometer, Engine Hour Meter, Trip Odometer and Trip Computer
- Power 1st Row Windows w/Driver And Passenger 1-Touch Down
- Power Door Locks w/Autolock Feature
- Power Rear Windows and Removable 3rd Row Windows
- Premium Cloth Low-Back Bucket Seats- Proximity Key For Push Button Start Only
- Remote Keyless Entry w/Integrated Key Transmitter, Illuminated Entry and Panic Button
- Trip Computer- 2 12V DC Power Outlets
- 2 12V DC Power Outlets and 1 120V AC Power Outlet - 2 Seatback Storage Pockets
- 4-Way Passenger Seat -inc: Manual Recline and Fore/Aft Movement
- 60-40 Folding Split-Bench Front Facing Fold Forward Seatback Premium Cloth Rear Seat
- Air Filtration- Analog Appearance- Cargo Space Lights
- Carpet Floor Trim, Carpet And Rubber Mat- Compass
- Cruise Control w/Steering Wheel Controls- Day-Night Rearview Mirror
- Delayed Accessory Power
- Driver And Passenger Visor Vanity Mirrors w/Driver And Passenger Illumination
- Fade-To-Off Interior Lighting- Front And Rear Map Lights
- Front Center Armrest w/Storage
- Full Floor Console w/Locking Storage, 2 12V DC Power Outlets and 1 120V AC Power Outlet
- Garage Door Transmitter- HVAC -inc: Console Ducts- Illuminated Front Cupholder
- Illuminated Rear Cupholder
- Instrument Panel Bin, Dashboard Storage, Driver / Passenger And Rear Door Bins
- Interior Trim -inc: Colored Instrument Panel Insert, Metal-Look Door Panel Insert, Metal-Look Console Insert and Metal-Look Interior Accents
- Leather Steering Wheel- Locking Cargo Area Concealed Storage- Locking Glove Box
- Manual Adjustable Front Head Restraints and Foldable Rear Head Restraints
- Manual Tilt/Telescoping Steering Column- Outside Temp Gauge- Perimeter Alarm
- Redundant Digital Speedometer- Sentry Key Engine Immobilizer
- Smart Device Integration- Systems Monitor- Urethane Gear Shifter Material
- Voice Activated Dual Zone Front Automatic Air Conditioning

## Mechanical

- 4-Wheel Disc Brakes w/4-Wheel ABS, Front Vented Discs, Brake Assist and Hill Hold Control
- Brake Actuated Limited Slip Differential- Driver Selectable Front Locking Differential
- Driver Selectable Rear Locking Differential- Engine: 3.6L V6 24V VVT UPG I w/ESS
- Transmission: 6-Speed Manual- 1351# Maximum Payload- 21.5 Gal. Fuel Tank
- 220 Amp Alternator- 4.10 Rear Axle Ratio- 5 Skid Plates- 50 State Emissions

## LED LIGHTING GROUP

-inc: Daytime Running Lamps LED Accents,  
Front LED Fog Lamps, LED Premium Reflector  
Headlamps, LED Taillamps

\$1,365

## REMOTE PROXIMITY KEYLESS ENTRY

\$645

## SAFETY GROUP

-inc: ParkSense Rear Park Assist System, Blind  
Spot & Cross Path Detection

\$995

## SKY 1-TOUCH POWER TOP

-inc: Rear Window Defroster, Rear Window  
Wiper/Washer, Removable Rear Quarter  
Windows, Power Top Quarter Window Storage  
Bag

\$4,095

## QUICK ORDER PACKAGE 25R

-inc: Engine: 3.6L V6 24V VVT eTorque UPG I,  
Transmission: 8-Speed Automatic (850RE)

## Option Packages Total

\$13,340

- 650CCA Maintenance-Free Battery w/Run Down Protection- Auto Locking Hubs
  - Aux Battery- Electro-Hydraulic Power Assist Steering- Engine Oil Cooler
  - Front Active w/Driver Control Anti-Roll Bar and Rear Anti-Roll Bar- GVWR: 5,800 lbs
  - HD Shock Absorbers- Leading Link Front Suspension w/Coil Springs
  - Manual Transfer Case- Part-Time Four-Wheel Drive- Performance Suspension
  - Single Stainless Steel Exhaust- Stop-Start Dual Battery System
  - Towing Equipment -inc: Trailer Sway Control
  - Trailing Arm Rear Suspension w/Coil Springs
- 

---

Texas Vehicle Exchange

[tveauto.com](https://tveauto.com)

972-242-5350

1724 Luna Road

Carrollton, TX 75006

© 2024 AutoRevo - All rights reserved. - Powered by [AutoRevo](#)