

## 2020 Chevrolet Silverado 2500HD Diesel 4x4 LT

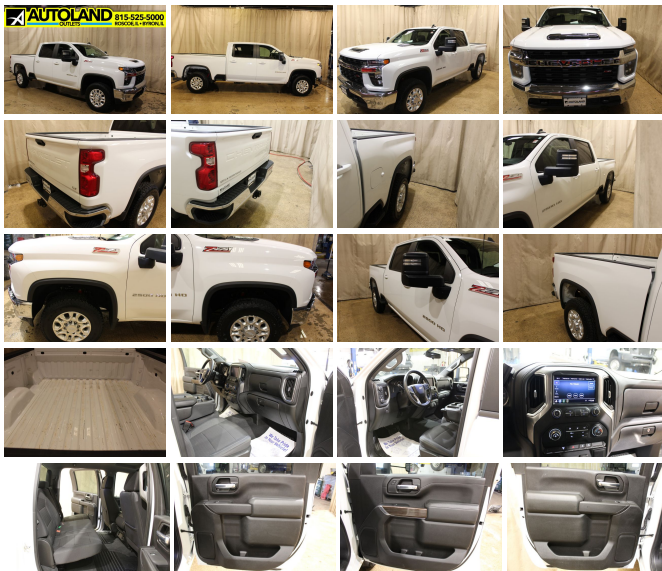
View this car on our website at [autolandoutlets.com/6935331/ebrochure](http://autolandoutlets.com/6935331/ebrochure)



Our Price **\$59,740**

### Specifications:

Year:	2020
VIN:	1GC4YNEY8LF160229
Make:	Chevrolet
Stock:	10724
Model/Trim:	Silverado 2500HD Diesel 4x4 LT
Condition:	Pre-Owned
Body:	Pickup Truck
Exterior:	Summit White
Engine:	ENGINE, DURAMAX 6.6L TURBO-DIESEL V8
Interior:	Black Cloth
Transmission:	TRANSMISSION, ALLISON 10-SPEED AUTOMATIC
Mileage:	50,182
Drivetrain:	4 Wheel Drive



2020 Chevrolet Silverado Crew Cab Diesel 4x4 options include Z71 Package, 3.42 Rear Axle Ratio, 10 Speed Transmission, Power Package. Call Autoland Outlets at 1-815-525-5000 a friendly team

# member tell you all about stock number 10724.

Many of our trucks are Rust Free Southern Units!!! We Buy-Sell-Trade call us for Availability and Pricing 815-525-5000.Dealer Shall in no way be held liable for any errors or omissions to be found on these webpages. All prices are plus any applicable state taxes and service fees. We will do our best to keep all the information current and accurate,however the dealership should be contacted for final pricing and availability. Autoland Outlets is the midwest Premier Truck Store. Over 250 Trucks in Stock!! Over 150 are Diesels! 3/4 Tons, 1 Tons, Regular, Extended and Crew Cabs. Plus: Dump Trucks, Utility Trucks, and much more! Many New Trucks Arriving Daily!!! Thousands of Satisfied Customers! Over 25 Years in Business. Updated Daily 888-240-8674 ILLINOIS WARRANTY MAY APPLY CALL DEALERSHIP

FOR DETAILS

---

2020 Chevrolet Silverado 2500HD Diesel 4x4 LT

Autoland Outlets - 877-319-6060 - View this car on our website at [autolandoutlets.com/6935331/ebrochure](http://autolandoutlets.com/6935331/ebrochure)

## Our Location :



---

2020 Chevrolet Silverado 2500HD Diesel 4x4 LT

Autoland Outlets - 877-319-6060 - View this car on our website at [autolandoutlets.com/6935331/ebrochure](http://autolandoutlets.com/6935331/ebrochure)

## Installed Options

Interior

- Air conditioning, single-zone
- Air vents, rear, heating/cooling (Not available on Regular Cab models.)
- Assist handles front A-pillar mounted for driver and passenger, rear B-pillar mounted
- Chevrolet Connected Access capable (Subject to terms. See onstar.com or dealer for details.)
- Cloth seat trim- Compass located in instrument cluster
- Cruise control, electronic with set and resume speed, steering wheel-mounted
- Door locks, power
- Driver Information Center, 4.2" diagonal color display includes driver personalization
- Exterior Temperature Display located in radio display
- Floor covering, color-keyed carpeting
- Floor mats, rubberized vinyl, front (Deleted when LPO floor liners are ordered.)
- Floor mats, rubberized-vinyl rear (Not available with Regular Cab models. Deleted when LPO floor liners are ordered.)
- Instrument cluster 6-gauge cluster featuring speedometer, fuel level, engine temperature, tachometer, voltage and oil pressure
- Mirror, inside rearview, manual tilt- Power outlet, front auxiliary, 12-volt
- Rear Seat Reminder (Requires Crew Cab or Double Cab model.)
- Remote Keyless Entry with 2 transmitters- Seat adjuster, driver 4-way manual
- Seat adjuster, passenger 4-way manual
- Seat, rear 60/40 folding bench (folds up), 3-passenger (includes child seat top tether anchor) (Requires Crew Cab or Double cab model.)
- Seats, front 40/20/40 split-bench with upper covered armrest storage (Not available with (PCL) Convenience Package.)
- Steering column, Tilt-Wheel, manual with wheel locking security feature
- Steering wheel, urethane- USB ports, 2 (first row) located on instrument panel
- Window, power front, drivers express up/down
- Window, power front, passenger express down
- Windows, power rear, express down (Not available on Regular Cab models.)

---

## Exterior

- BedStep, Black integrated on forward portion of bed on driver and passenger side (Deleted when (ZW9) pickup bed delete is ordered.)
- Bumper, front chrome- Bumper, rear chrome
- Cargo tie downs (12), fixed rated at 500 lbs per corner (Deleted with (ZW9) pickup bed delete.)
- CornerStep, rear bumper- Door handles, body-color- Glass, deep-tinted
- Grille (Chrome front grille bar with "CHEVROLET". Includes molded in color Black grille inserts with small Gold bowtie emblem.)
- Headlamps, halogen reflector with halogen Daytime Running Lamps
- Lamps, cargo area, cab mounted integrated with center high mount stop lamp, with switch in bank on left side of steering wheel.
- Mirror caps, Black
- Mirrors, outside power-adjustable vertical trailing with heated upper glass, lower convex mirrors, integrated turn signals, manual folding/extending (extends 3.31" [84.25mm])
- Moldings, beltline, Black- Tailgate and bed rail protection cap, top
- Tailgate, gate function manual with EZ Lift (Deleted with (ZW9) pickup bed delete.)
- Tailgate, locking, utilizes same key as ignition and door (Upgraded to (QT5) EZ Lift power lock and release tailgate when (PCL) Convenience Package or (ZL6) Advanced Trailing Package is ordered. Not available with (ZW9) pickup bed delete.) (Upgraded to (QT5) EZ Lift power lock and release tailgate when (WPF) Fleet Comfort Package, (PCL) Convenience Package or (ZL6) Advanced Trailing Package is ordered. Not available with (ZW9) pickup bed delete.)
- Taillamps with incandescent tail, stop and reverse lights
- Tire carrier lock keyed cylinder lock that utilizes same key as ignition and door (Deleted with (ZW9) pickup bed delete.)
- Tire, spare LT245/75R17E all-season, blackwall (Included and only available with (QHQ) LT245/75R17E all-season, blackwall tires with (E63) Durabed, pickup bed. Available to order when (ZW9) pickup bed delete and (QHQ) LT245/75R17E all-season, blackwall tires are ordered)
- Tires, LT245/75R17E all-season, blackwall- Wheels, 17" (43.2 cm) machined aluminum

---

## Safety

- Air conditioning, single-zone
- Air vents, rear, heating/cooling (Not available on Regular Cab models.)
- Assist handles front A-pillar mounted for driver and passenger, rear B-pillar mounted
- Chevrolet Connected Access capable (Subject to terms. See onstar.com or dealer for details.)
- Cloth seat trim- Compass located in instrument cluster
- Cruise control, electronic with set and resume speed, steering wheel-mounted
- Door locks, power
- Driver Information Center, 4.2" diagonal color display includes driver personalization
- Exterior Temperature Display located in radio display
- Floor covering, color-keyed carpeting
- Floor mats, rubberized vinyl, front (Deleted when LPO floor liners are ordered.)

- Floor mats, rubberized vinyl, front (Deleted when LPO floor liners are ordered.)
- Floor mats, rubberized-vinyl rear (Not available with Regular Cab models. Deleted when LPO floor liners are ordered.)
- Instrument cluster 6-gauge cluster featuring speedometer, fuel level, engine temperature, tachometer, voltage and oil pressure
- Mirror, inside rearview, manual tilt- Power outlet, front auxiliary, 12-volt
- Rear Seat Reminder (Requires Crew Cab or Double Cab model.)
- Remote Keyless Entry with 2 transmitters- Seat adjuster, driver 4-way manual
- Seat adjuster, passenger 4-way manual
- Seat, rear 60/40 folding bench (folds up), 3-passenger (includes child seat top tether anchor) (Requires Crew Cab or Double cab model.)
- Seats, front 40/20/40 split-bench with upper covered armrest storage (Not available with (PCL) Convenience Package.)
- Steering column, Tilt-Wheel, manual with wheel locking security feature
- Steering wheel, urethane- USB ports, 2 (first row) located on instrument panel
- Window, power front, drivers express up/down
- Window, power front, passenger express down
- Windows, power rear, express down (Not available on Regular Cab models.)

## Mechanical

- Air filter, high-capacity- Air filtration monitoring
- Alternator, 170 amps (Requires (L8T) 6.6L V8 gas engine.)
- Battery, heavy-duty 720 cold-cranking amps/80 Amp-hr maintenance-free with rundown protection and retained accessory power (Included and only available with (L8T) 6.6L V8 gas engine.)
- Brake lining wear indicator- Brakes, 4-wheel antilock, 4-wheel disc with DURALIFE rotors
- Capless Fuel Fill (Requires (L8T) 6.6L V8 gas engine. Not available with (ZW9) pickup bed delete.)
- Cooling, auxiliary external transmission oil cooler- Cooling, external engine oil cooler
- Differential, heavy-duty locking rear- Durabed, pickup bed
- Engine, 6.6L V8 with Direct Injection and Variable Valve Timing, gasoline, (401 hp [299 kW] @ 5200 rpm, 464 lb-ft of torque [629 N-m] @ 4000 rpm)
- Four wheel drive
- Frame, fully-boxed, hydroformed front section and a fully-boxed stamped rear section
- GVWR, 10,450 lbs. (5012 kg) (Included and only available with CK20743 model and (L8T) 6.6L V8 gas engine with 17" wheels or CK20903 model and (L8T) 6.6L V8 gas engine with 18" or 20" wheels.)
- Rear axle, 3.73 ratio (Requires (L8T) 6.6L V8 gas engine. Not available with (L5P) Duramax 6.6L Turbo-Diesel V8 engine.)
- Recovery hooks, front, frame-mounted, Black (Not included when (VQY) Chrome recovery hooks, LPO is ordered.)
- Steering, Recirculating Ball with smart flow power steering system - Suspension Package
- Trailer brake controller, integrated
- Transfer case, two-speed electronic shift with push button controls (Requires 4WD models.)
- Transmission, 6-speed automatic, heavy-duty (Requires (L8T) 6.6L V8 gas engine.)

## Option Packages

### Factory Installed Packages

#### ENGINE, DURAMAX 6.6L TURBO-DIESEL V8

B20-Diesel compatible, (445 hp [332 kW] @ 2800 rpm, 910 lb-ft of torque [1220 Nm] @ 1600 rpm) **\$9,890**

#### TRANSMISSION, ALLISON 10-SPEED AUTOMATIC

#### Z71 OFF-ROAD PACKAGE

includes (Z71) Off-Road suspension with off-road tuned twin tube Rancho shocks, (JHD) Hill Descent Control and (NZZ) skid plates (transfer case and oil pan) **\$525**

#### REAR AXLE, 3.42 RATIO

GVWR, 11,350 LBS. (5148 KG)

-  
SUMMIT WHITE STANDARD PAINT

-  
LT PREFERRED EQUIPMENT GROUP  
includes standard equipment

-  
AUDIO SYSTEM, CHEVROLET  
INFOTAINMENT 3 SYSTEM  
8" diagonal color touchscreen,  
AM/FM stereo. Additional  
features for compatible phones  
include: Bluetooth audio  
streaming for 2 active devices,  
voice command pass-through  
to phone, Apple CarPlay and  
Android Auto capable.

-  
JET BLACK, CLOTH SEAT TRIM

-  
SEATS, FRONT 40/20/40 SPLIT-BENCH  
with upper covered armrest  
storage

-  
TIRE, SPARE LT275/70R18 ALL-  
TERRAIN, BLACKWALL

-  
TIRES, LT275/70R18E ALL-TERRAIN,  
BLACKWALL  
\$200

-  
WHEELS, 18" (45.7 CM) MACHINED  
ALUMINUM  
with Silver painted accents, 6-  
spoke  
\$300

-  
Option Packages Total  
\$10,915