



2012 RAM 2500 4X4 6.7 DIESEL 6 SPEED MANUAL ONLY 59K MILES !

Our Price \$43,900

View this vehicle on our website at njtrucking.com

King of Cars and Trucks

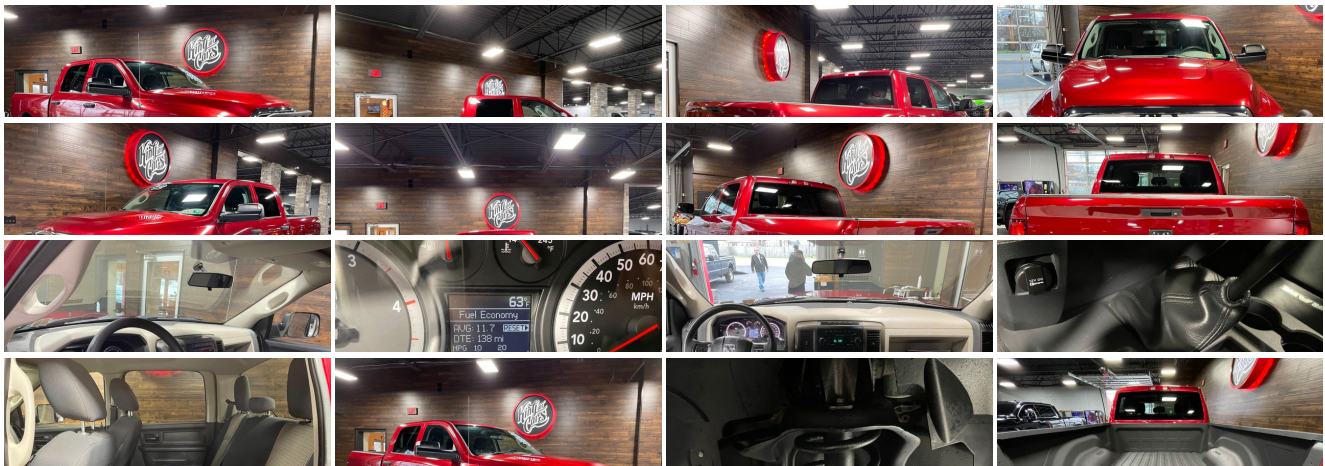
856-693-3181

1229 Broadway , Westville, New Jersey 08093

Photos

Details

Contact





Specifications:

Year:	2012
VIN:	3C6UD5CL4CG301077
Make:	RAM 2500 4X4 6.7 DIESEL
Model/Trim:	6 SPEED MANUAL ONLY 59K MILES !
Condition:	Pre-Owned
Body:	Pickup Truck
Exterior:	Red
Engine:	6.7L I6 CUMMINS TURBO DIESEL ENGINE
Interior:	Gray
Transmission:	6-SPEED MANUAL TRANSMISSION W/OD
Mileage:	59,989
Drivetrain:	4 Wheel Drive

Vehicle Description

BUY IT NOW

LOW LOW MILE 6 SPEED !

RARE 6-SPEED MANUAL CUMMINS!

2012 RAM 2500 4X4

CREW CAB

6.7L CUMMINS TURBO DIESEL

~G56 6-SPEED MANUAL TRANSMISSION~

ST PACKAGE / POWER OPTIONS

(ONLY 59,989 ORIGINAL / ACTUAL MILES) !!!

SOUTHERN TRUCK / RUST FREE

PRISTINE CONDITION

1 OWNER

CLEAN CARFAX !

LIKE NEW TIRES

HAMMERHEAD FRONT AND BACK STEEL BUMPERS !

THIS IS A TRUE 1 OWNER/ CLEAN CARFAX VEHICLE! LIKE NEW !!!

RUNS AND DRIVES 100% AND TIGHT

STOCK POWERTRAIN / NEVER TAMPERED WITH

UNDERSIDE IN MINT CONDITION

ALWAYS SERVICED AND DETAILED

WILL NOT LAST!

RARE FIND

DON'T SNOOZE AND LOSE THIS ONE !

\$43,900

CALL / TEXT AARON 856-693-9370 WITH ANY QUESTIONS

Installed Options

Interior

- HD vinyl 40/20/40 split bench seat - Pwr locks- 120-MPH primary speedometer
- 12V pwr outlet- 2nd row in-floor storage bins- 4-spoke steering wheel- Air conditioning
- Black instrument panel bezel- Black vinyl floor covering
- Driver/passenger assist handles- Dual visors- Instrument cluster w/display screen
- Mini floor console- Pwr accessory delay- Pwr windows w/front one-touch up & down
- Rear dome lamp- Rear folding bench seat- Rear underseat compartment storage
- Rearview day/night mirror- Sentry Key theft deterrent system - Speed control
- Tilt steering column- Vehicle info center

Exterior

- 17" x 7.5" steel styled wheels - Fold-away pwr heated mirrors -inc: black mirror caps
- Full size spare tire- LT245/70R17E all-season BSW tires- 17" steel spare wheel
- Automatic headlamps- Black door handles- Black front bumper- Black grille
- Black rear bumper- Body color fuel filler door- Body color headlamp filler panel
- Cargo lamp- Center hub- Fixed rear window- Front air dam
- Front bumper sight shields- Front license plate bracket- Locking tailgate
- Quad halogen headlamps- Tinted glass- Variable speed intermittent windshield wipers
- Vendor painted cargo box tracking- Winch-type tire carrier

Safety

- HD vinyl 40/20/40 split bench seat - Pwr locks- 120-MPH primary speedometer
- 12V pwr outlet- 2nd row in-floor storage bins- 4-spoke steering wheel- Air conditioning
- Black instrument panel bezel- Black vinyl floor covering
- Driver/passenger assist handles- Dual visors- Instrument cluster w/display screen
- Mini floor console- Pwr accessory delay- Pwr windows w/front one-touch up & down
- Rear dome lamp- Rear folding bench seat- Rear underseat compartment storage
- Rearview day/night mirror- Sentry Key theft deterrent system - Speed control
- Tilt steering column- Vehicle info center

Mechanical

- 5.7L SMPI V8 Hemi engine w/variable valve timing
- 6-speed automatic transmission w/OD (REQ: EZC Engine) - Four-wheel drive
- Manual shift-on-the-fly transfer case- 10.5" rear axle ring gear diameter
- 160-amp alternator- 3.73 axle ratio- 5500# front axle- 6'4" pickup box
- 7-pin wiring harness- 730-amp maintenance-free battery- 8800# GVWR
- Class IV receiver hitch- Conventional front axle- Conventional rear axle
- Electronically controlled throttle- Front stabilizer bar- HD engine cooling
- HD front shock absorbers- HD rear shock absorbers- Next generation engine controller
- Pwr 4-wheel anti-lock disc brakes- Pwr steering- Tip start
- Trailer tow wiring w/4-pin connector- Transmission oil cooler

Option Packages

Factory Installed Packages

6.7L I6 CUMMINS TURBO DIESEL ENGINE

- inc: 11.50 rear axle, Cummins turbo diesel badge, current generation engine controller, diesel exhaust brake, electronically controlled throttle, front bumper sight shields, 9600# GVWR, tow hooks

\$7,795

6-SPEED MANUAL TRANSMISSION W/OD

- inc: 3.42 rear axle ratio, mini floor console

Option Packages Total

\$7,795

King of Cars and Trucks

King of Cars and Trucks

View this car on our website at njtruckking.com/6932942

Website: njtruckking.com

Phone: 856-693-3181

Map: [1229 Broadway, Westville, New Jersey 08093](#)

