

3075 Leon Rd
Jacksonville , FL 32246

2006 Jeep Wrangler Unlimited GR8TOPS SAFARI TOP

Nolan Hill

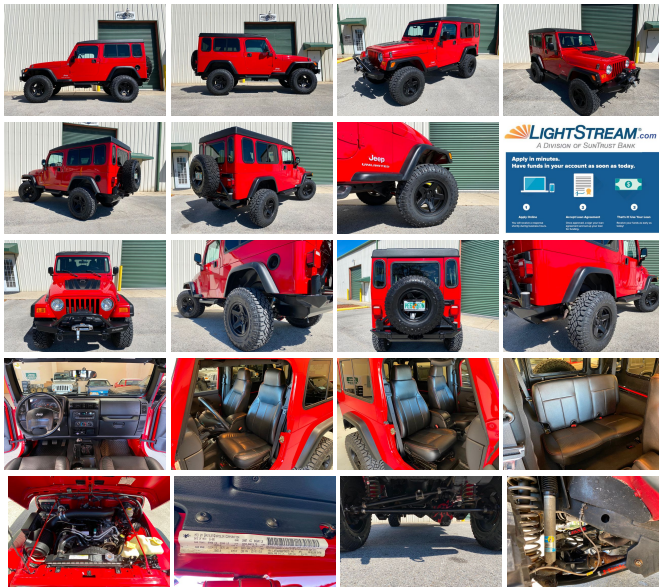
View this car on our website at premierautomotivesource.com/6924378/ebrochure



Our Price **\$0**

Specifications:

Year:	2006
VIN:	1J4FA44S66P784575
Make:	Jeep
Model/Trim:	Wrangler Unlimited GR8TOPS SAFARI TOP
Condition:	Pre-Owned
Body:	SUV
Exterior:	Flame Red
Engine:	4.0L SMPI I6 "POWER TECH" ENGINE
Interior:	Dark Slate Gray Leather
Transmission:	6-SPEED MANUAL TRANSMISSION
Mileage:	171,800
Drivetrain:	4 Wheel Drive
Economy:	City 14 / Highway 18



2006 WRANGLER UNLIMITED LJ

- LEGENDARY 4.0 INLINE 6 ENGINE -
- 6 SPEED MANUAL TRANSMISSION -
- FACTORY DANA 44 REAR END -
- FACTORY 4 WHEEL DISC BRAKES -
- GR8TOPS SAFARI TOP -
- CUSTOM BLACK LEATHER INTERIOR -
- 4" JKS SUSPENSION LIFT -
- BILSTEIN 5100 SHOCKS -
- JKS HEAVY DUTY STEERING -
- HEAVY FRONT & REAR TRACK BARS -
- POISON SPYDER DIFF COVERS -
- WARN ZEON 10K WINCH -

- HANSON FRONT BUMPER -
- POISON SPYDER REAR BUMPER & TIRE CARRIER -
- MAMMOTH WHEELS -
- NEW 285/75/16 GOODYEAR DURATRAC M/T TIRES -
- GENRIGHT ALUM. FUEL TANK & SKID PLATE -
- BANKS AIR INTAKE -
- SIDE STEPS -
- COLD A/C -
- LOTS OF RECENT SERVICE -
- CLEAN CARFAX HISTORY REPORT -
- WE TAKE TRADES -
- WE SELL & SHIP WORLD WIDE -
- CALL OR TEXT NOLAN @ 904-382-7230 -
- LIVE WALK AROUND VIDEO AVAILABLE -

**FOR FINANCING WE
RECOMMEND <http://LIGHTSTREAM.COM>**

Lifted 2006 Jeep Wrangler LJ Unlimited, Flame Red, 4.0 inline 6 Engine, 6 speed manual. Thousands have been spent on quality parts customizing this amazing Jeep. Starting with custom black leather Interior, a GR8TOPS Safari Hardtop that really sets this Jeep apart from the crowd, 4" JKS lift kit with adjustable upper & tubular lower control arms, heavy duty front & rear track bars, Bilstein 5100 shocks, Poison Spyder diff covers, GenRight aluminum fuel tank & heavy duty skid plate, Hanson Front Bumper with Warn Zeon 10k winch with synthetic line, Poison spyder rear bumper & spare tire swing out, Mammoth aluminum wheels & brand new 285/75/16 Goodyear Duratrac M/T' tires. Cold A/C. Factory DANA 44 rear end, Factory 4 wheel disc brakes. The CarFax history reports no accidents or

Carfax history reports no accidents or issues. Call or text Nolan @ 904-382-7230 to learn more about this one of a kind LJ Wrangler it is very clean inside and out as well as underneath. It runs, drives, and looks great. It turns heads wherever it goes! Sale includes 1 key, plastic all weather mats, and owners manual.

ALL INVENTORY IS STORED INDOORS AND SHOWN BY APPOINTMENT. Trades accepted. All applicable sales tax, title, registration and \$299 document fee applies.

Also check us out at:

http://www.instagram.com/nolan_premieraautosource/

<https://www.facebook.com/premieraautosource/>

<http://youtube.com/premieraautosource/>

#PREMIERAUTOSOURCE

#PREMIERJEEPSOURCE

2006 Jeep Wrangler Unlimited GR8TOPS SAFARI TOP

Premier Automotive Source LLC - - View this car on our website at premierautomotivesource.com/6924378/ebrochure

Our Location :



2006 Jeep Wrangler Unlimited GR8TOPS SAFARI TOP

Installed Options

Interior

- AM/FM stereo w/CD player-inc: changer control
- Cloth reclining high-back front bucket seats - Front floor mats- (4) speakers
- Air conditioning- Aux 12-volt pwr outlet- Cargo tie down loops
- Courtesy/underhood lamps- Easy access tip/slide driver seat
- Easy access tip/slide passenger seat- Fixed long mast antenna- Folding rear seat
- Front/rear seat, wheelhouse, cargo area carpeting- Full length floor console
- Glove box w/lock- Sport bar w/full padding- Tilt steering column

Exterior

- Easy folding soft top- Sunrider soft top- Variable intermittent windshield wipers
- Bumper extensions- Deep tint sunscreen glass- Fender flares- Fog lamps
- Fold away mirrors- Front door light tinted windows

Safety

- AM/FM stereo w/CD player-inc: changer control
- Cloth reclining high-back front bucket seats - Front floor mats- (4) speakers
- Air conditioning- Aux 12-volt pwr outlet- Cargo tie down loops
- Courtesy/underhood lamps- Easy access tip/slide driver seat
- Easy access tip/slide passenger seat- Fixed long mast antenna- Folding rear seat
- Front/rear seat, wheelhouse, cargo area carpeting- Full length floor console
- Glove box w/lock- Sport bar w/full padding- Tilt steering column

Mechanical

- (2) front/(1) rear tow hooks- (5) 15" x 8.0" "Ravine" aluminum wheels
- 117-amp alternator- 19 gallon fuel tank- 3.73 axle ratio
- 30 x 9.5R15 all-terrain OWL "Wrangler" tires - 4-wheel pwr disc brakes
- 4.0L SMPI I6 "Power Tech" engine - 4600# GVWR- 6-speed manual transmission
- 600-CCA maintenance free battery- Command-Trac part-time 4WD system
- Dana 30/186MM front axle- Front stabilizer bar- Full size spare tire w/outside carrier
- HD Dana 44 rear axle- High pressure gas-charged shock absorbers
- Next generation engine controller- Pwr recirculating ball steering
- Skid plates-inc: transfer case, fuel tank- Trac-Lok rear differential

Option Packages

Factory Installed Packages

4.0L SMPI I6 "POWER TECH" ENGINE

6-SPEED MANUAL TRANSMISSION

BODY-SIDE STEPS

\$150

SPEED CONTROL

-inc: leather wrapped steering wheel

\$300

Option Packages Total

\$450

DEALER POLICIES: Please review all photos carefully and ask questions prior to making an offer if there is anything you are not sure about. We welcome pre-sale inspections. Any descriptions we make of vehicles shall not be construed as any type of warranty. Our pictures are as thorough and precise as we can make them. Please be advised that this is not a brand new vehicle. It is a pre-owned vehicle and has previously been driven, so therefore with respect to the miles there will most likely be average wear and tear, such as minor scratches, minor dings, or small rock chips. We do our best to disclose any substantial blemishes in our photos and descriptions. If our vehicles include manuals, service records or extra sets of keys, it will be shown in the pictures and noted in the description. The advertised mileage is a round number and may vary slightly from the exact mileage due to demo and test drives. Once a vehicle leaves our premises, no refunds, credits, or adjustments, will be issued. All Vehicles are conveyed AS-IS. Dealer neither makes nor implies any warranty on this or any vehicle. Any dispute that may arise shall take place under the laws of the state of Florida, in the state of Florida and all sales are subject to binding Arbitration under the rules of the American Arbitration Association. All applicable sales tax, tag and title fees apply. When we receive a vehicle into our inventory, sometimes the title is being held by a bank or lender as collateral for the previous loan or payoff. Occasionally there is a delay in receiving the title from these lending institutions after payoff of the loan for up to two weeks. While we usually have the titles in our possession, there are instances where we may be waiting for the title to arrive. We guarantee clean titles on our vehicles unless otherwise noted. In some cases we may hold titles until cashiers checks or other funds are cleared or unless other arrangements were agreed upon. Titles will be sent via Fedex for proper tracking. Thank you for your patience and understanding.

Premier Automotive Source LLC
premierautomotivesource.com
3075 Leon Rd
Jacksonville , FL 32246
© 2024 AutoRevo - All rights reserved. - **Powered by AutoRevo**