

Buy Direct From The Manufacturer



Triple S Mobility
Simple, Safe & Strong Wheelchair Vans

2020 Dodge Grand Caravan GT Wheelchair Van Handicap Ramp Van
Customer Service 727-492-1630

Our Price \$0

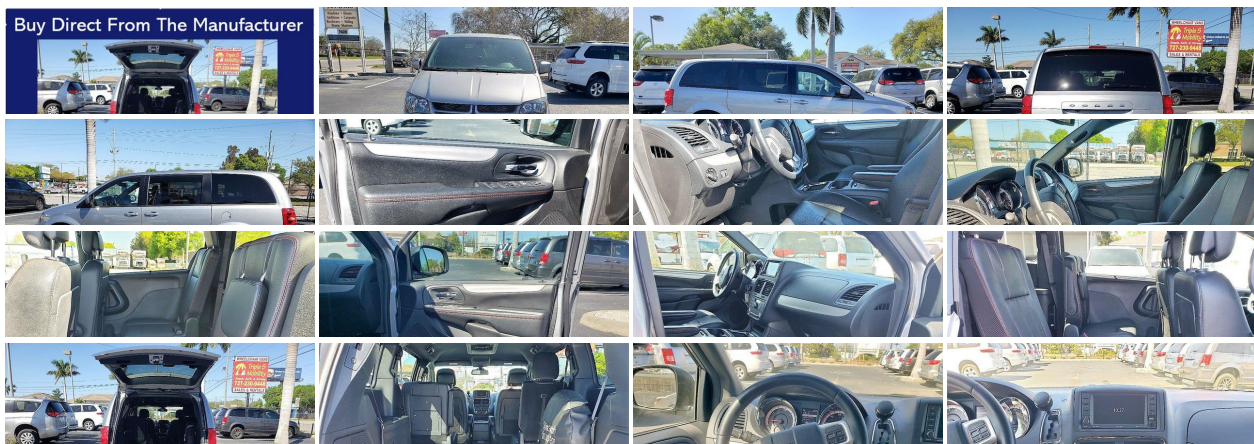
View this vehicle on our website at triplesmobility.com



727-492-1630

7498 Park Blvd North , Pinellas Park, Florida 33781

Photos
Details
Contact





Specifications:

| | |
|----------------------|---|
| Year: | 2020 |
| VIN: | 2C4RDGEG1LR189312 |
| Make: | Dodge Grand Caravan GT |
| Stock: | 189312 |
| Model/Trim: | Wheelchair Van Handicap Ramp Van |
| Condition: | Pre-Owned |
| Body: | Minivan/Van |
| Exterior: | Silver |
| Engine: | Pentastar 3.6L Flex Fuel V6 283hp 260ft. lbs. |
| Interior: | Black Leather |
| Transmission: | 6-Speed Shiftable Automatic |
| Mileage: | 54,885 |
| Drivetrain: | Front Wheel Drive |
| Economy: | City 17 / Highway 25 |

Vehicle Description

Standard Features Include: 3.6 liter V6 engine, automatic transmission, leather interior, rear backup camera, Uconnect, Bluetooth, Navigation, AM/FM stereo, CD player, heated power driver and front passenger seats, power windows, power door locks, power mirrors, power rear vents, power dual side sliding doors, power rear hatch, tri-zone air-conditioning, heated leather-wrapped tilt steering wheel with mounted radio controls, cruise control, tachometer, rear defroster and wiper, power steering, ABS brakes, driver and passenger airbags, all row curtain airbags, front and rear overhead console with storage compartment, fog lights, traction control, tire pressure monitoring, Homelink, keyless entry, privacy glass. Powertrain warranty expires 3/2025 or 60,000 miles whichever comes first.

Accessibility Modifications Include: Rear entry wheelchair conversion seats 4 occupants and 1 or 2 wheelchair passengers, 10 in. lowered floor, center cut 34 in. wide inside and 91 in. length with rubber flooring, 34 in. wide 54 in. long spring loaded and counter balanced manual ramp. 56 in. high door opening, 55 in. of interior height. Removable 2nd row footrest, auto-retracting and tightening Q-strait wheelchair lockdown straps. (2nd set of Q-strait tiedowns optional).*

*Due to manufacturing and conversion components, measurements may vary slightly.

Installed Options

Interior

- Remote engine start- Sunshade: side window- Rear seat folding: fold flat into floor
- Rear seat type: captains chairs- Third row seat folding: fold flat into floor
- Third row seat type: 40-60 split bench - Air filtration
- Front air conditioning: automatic climate control- Front air conditioning zones: dual
- Rear air conditioning: automatic climate control- Floor mat material: rubber/vinyl
- Floor mats: front- Heated steering wheel- Shift knob trim: leather
- Steering wheel trim: leather- Ambient lighting- Cargo area light- Conversation mirror
- Cruise control- Multi-function remote: keyless entry- Power outlet(s): 115V rear
- Power steering- Rearview mirror: auto-dimming- Steering wheel: tilt and telescopic
- Universal remote transmitter: garage door opener - Clock - Compass- Digital odometer
- External temperature display- Multi-function display- Trip odometer
- Driver seat: heated- Driver seat power adjustments: 8- Front seat type: bucket
- Passenger seat: heated- Passenger seat power adjustments: 8
- Upholstery: leather-trimmed

Exterior

- Front bumper color: body-color- Mirror color: body-color- Rear spoiler: roofline
- Side door type: dual power sliding- Daytime running lights
- Exterior entry lights: approach lamps- Front fog lights- Side mirrors: heated
- Spare wheel type: steel- Tire Pressure Monitoring System
- Wheels: painted aluminum alloy- Front wipers: variable intermittent
- Power windows: safety reverse- Rear privacy glass- Rear quarter windows: power
- Rear wiper: intermittent- Solar-tinted glass- Window defogger: rear

Option Packages

Factory Installed Packages

ENGINE: 3.6L V6 24V VVT

Triple S Mobility, Inc

Triple S Mobility, Inc

View this car on our website at triplesmobility.com/6914552

Website: triplesmobility.com

Phone: [727-492-1630](tel:727-492-1630)

Map: [7498 Park Blvd North, Pinellas Park, Florida 33781](#)

