



## 2018 RAM 2500 MEGA CAB CUMMINS DIESEL G56 6-SPD 4X4 PRO BUILT LOW MILE

**Our Price \$72,900**

View this vehicle on our website at [njtrucking.com](http://njtrucking.com)

King of Cars and Trucks

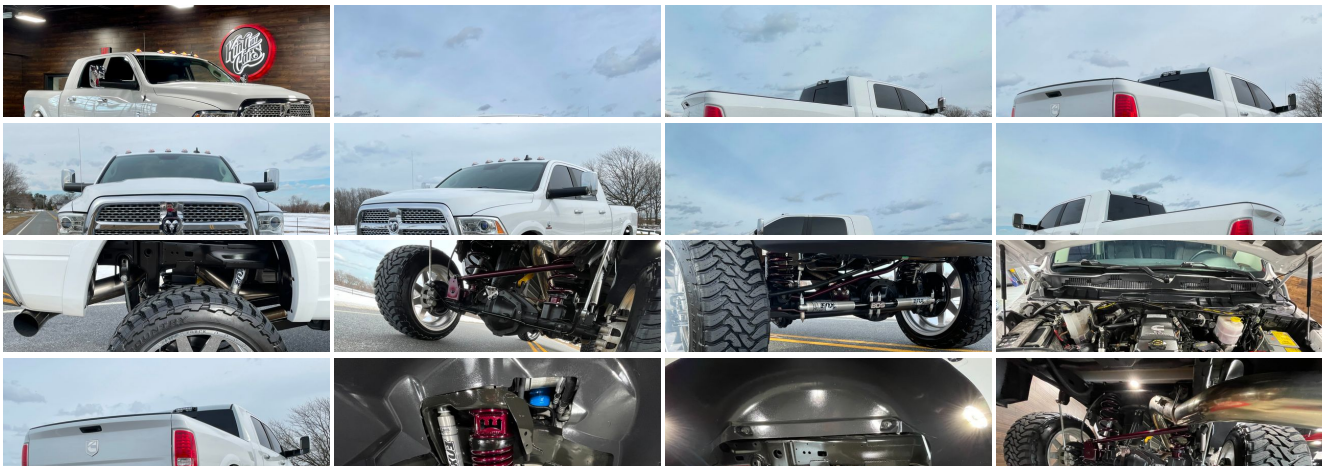
[856-693-3181](tel:856-693-3181)

1229 Broadway , Westville, New Jersey 08093

[Photos](#)

[Details](#)

[Contact](#)





## Specifications:

<b>Year:</b>	2018
<b>VIN:</b>	3C6UR5NL9JG406063
<b>Make:</b>	RAM 2500 MEGA CAB
<b>Model/Trim:</b>	CUMMINS DIESEL G56 6-SPD 4X4 PRO BUILT LOW MILE
<b>Condition:</b>	Pre-Owned
<b>Body:</b>	Pickup Truck
<b>Exterior:</b>	White
<b>Engine:</b>	ENGINE: 6.7L I6 CUMMINS TURBO DIESEL
<b>Interior:</b>	Black Leather
<b>Transmission:</b>	TRANSMISSION: 6-SPEED MANUAL (G56)
<b>Mileage:</b>	37,527
<b>Drivetrain:</b>	4 Wheel Drive

## Vehicle Description

G56 MEGA CAB CUMMINS !

2018 RAM 2500 SRW 4X4

MEGA CAB

6.7L CUMMINS TURBO DIESEL

~LARAMIE~

LOADED ALL THE OPTIONS

G56 MANUAL 6-SPEED TRANSMISSION

( ONLY 37,527 ORIGINAL / ACTUAL MILES )

MINT!

PRO BUILT

6" BDS 4-LINK POWDERED LIFT

2" WICKED SPACERS

FOX SHOCKS

24" AMERICAN FORCE WHEELS

37" TOYO TIRES

ROCK LIGHTS

STAINLESS EXHAUST

TINT

AMP STEPS

& MORE

STRAIGHT KILLER!

RUNS AND DRIVES 100%

ONE OF THE CLEANEST G56 WE'VE COME ACROSS!

ALWAYS SERVICED AND DETAILED

WILL NOT LAST!

DONT SNOOZE AND LOSE THIS ONE !

RARE RARE FIND!

\$72,900

CALL / TEXT ROB 856-381-6621 WITH ANY QUESTIONS

### Installed Options

#### Interior

- 40/20/40 Split Bench Seat- Exterior Mirrors w/Memory
- Full Carpet Floor Covering -inc: Carpet Front And Rear Floor Mats
- Gauges -inc: Speedometer, Odometer, Voltmeter, Oil Pressure, Engine Coolant Temp, Tachometer, Oil Temperature, Transmission Fluid Temp, Engine Hour Meter, Trip Odometer and Trip Computer
- Heated Front Seats- Integrated Voice Command w/Bluetooth
- Interior Trim -inc: Simulated Wood/Metal-Look Instrument Panel Insert, Simulated Wood/Metal-Look Door Panel Insert and Chrome/Metal-Look Interior Accents
- Leather Trim 40/20/40 Bench Seat
- Power 10-Way Memory Driver & 6-Way Passenger Seats
- Power 1st Row Windows w/Driver And Passenger 1-Touch Up/Down
- Power Door Locks w/Autolock Feature- Power Lumbar Adjust- Power Rear Windows
- Remote Keyless Entry w/Integrated Key Transmitter, Illuminated Entry and Panic Button
- Trip Computer- Ventilated Front Seats- 115V Auxiliary Power Outlet
- 4 12V DC Power Outlets- 8.4" Touchscreen Display- Analog Display- Audio
- Cargo Area Concealed Storage- Compass- Cruise Control w/Steering Wheel Controls
- Day-Night Auto-Dimming Rearview Mirror- Delayed Accessory Power
- Driver And Passenger Visor Vanity Mirrors w/Driver And Passenger Illumination
- Driver Seat- Dual Zone Front Automatic Air Conditioning w/Front Infrared
- Electronically Controlled Throttle- Fade-To-Off Interior Lighting
- Front Center Armrest w/Storage and Rear Center Armrest
- Front Center Seat Cushion Storage- Front Cupholder
- Front Facing Manual Reclining Vinyl Rear Seat- Front Map Lights- Full Cloth Headliner
- Garage Door Transmitter- HVAC -inc: Underseat Ducts and Console Ducts
- Heated Leather Steering Wheel- High Back Seats- Illuminated Glove Box
- Instrument Panel Bin, Dashboard Storage, Driver / Passenger And Rear Door Bins
- Locking Tailgate
- Manual Adjustable Front Head Restraints and Manual Adjustable Rear Head Restraints
- Manual Tilt Steering Column- Mini Overhead Console and 4 12V DC Power Outlets
- Outside Temp Gauge- Passenger Seat- Perimeter Alarm
- Rear 60/40 Split Folding Seat- Rear Cupholder- Redundant Digital Speedometer
- Seats w/Leatherette Back Material- Sentry Key Engine Immobilizer
- Smart Device Integration- Systems Monitor
- Uconnect Access Mobile Hotspot Internet Access
- Underhood And Pickup Cargo Box Lights- Urethane Gear Shifter Material
- Valet Function- Voice Recorder

#### Exterior

- Exterior Mirrors w/Heating Element- Exterior Mirrors w/Supplemental Signals
- Power w/Tilt Down Side Mirrors w/Driver Auto Dimming - Power-Folding Mirrors
- Tires: LT275/70R18E BSW AS- Variable Intermittent Wipers
- Wheels: 18" x 8.0" Polished Aluminum
- Black Side Windows Trim and Black Front Windshield Trim
- Body-Colored Fender Flares- Cargo Lamp w/High Mount Stop Light- Center Hub
- Chrome Door Handles- Chrome Exterior Mirrors- Chrome Front Bumper
- Chrome Grille- Chrome Rear Step Bumper- Clearcoat Paint- Deep Tinted Glass
- Exterior Mirrors Courtesy Lamps- Front Fog Lamps- Front License Plate Bracket
- Full-Size Spare Tire Stored Underbody w/Crankdown
- Fully Automatic Projector Beam Halogen Headlamps w/Delay-Off
- Fully Galvanized Steel Panels- Hemi Badge- LED Brakelights- Power Rear Window
- Regular Box Style- Steel Spare Wheel- Tailgate Rear Cargo Access
- Vendor Painted Cargo Box Tracking

### Option Packages

#### Factory Installed Packages

ENGINE: 6.7L I6 CUMMINS TURBO DIESEL	
-inc: Selective Catalytic Reduction (Urea), 180 Amp Alternator, Cummins Turbo Diesel Badge, Tow Hooks, Current Generation Engine Controller, Diesel Exhaust Brake, RAM Active Air	\$8,800

TRANSMISSION: 6-SPEED MANUAL (G56)	
-inc: 3.42 Axle Ratio, Mini Floor Console	

Option Packages Total	\$8,800
-----------------------	---------

## Safety

- 40/20/40 Split Bench Seat- Exterior Mirrors w/Memory
- Full Carpet Floor Covering -inc: Carpet Front And Rear Floor Mats
- Gauges -inc: Speedometer, Odometer, Voltmeter, Oil Pressure, Engine Coolant Temp, Tachometer, Oil Temperature, Transmission Fluid Temp, Engine Hour Meter, Trip Odometer and Trip Computer
- Heated Front Seats- Integrated Voice Command w/Bluetooth
- Interior Trim -inc: Simulated Wood/Metal-Look Instrument Panel Insert, Simulated Wood/Metal-Look Door Panel Insert and Chrome/Metal-Look Interior Accents
- Leather Trim 40/20/40 Bench Seat
- Power 10-Way Memory Driver & 6-Way Passenger Seats
- Power 1st Row Windows w/Driver And Passenger 1-Touch Up/Down
- Power Door Locks w/Autolock Feature- Power Lumbar Adjust- Power Rear Windows
- Remote Keyless Entry w/Integrated Key Transmitter, Illuminated Entry and Panic Button
- Trip Computer- Ventilated Front Seats- 115V Auxiliary Power Outlet
- 4 12V DC Power Outlets- 8.4" Touchscreen Display- Analog Display- Audio
- Cargo Area Concealed Storage- Compass- Cruise Control w/Steering Wheel Controls
- Day-Night Auto-Dimming Rearview Mirror- Delayed Accessory Power
- Driver And Passenger Visor Vanity Mirrors w/Driver And Passenger Illumination
- Driver Seat- Dual Zone Front Automatic Air Conditioning w/Front Infrared
- Electronically Controlled Throttle- Fade-To-Off Interior Lighting
- Front Center Armrest w/Storage and Rear Center Armrest
- Front Center Seat Cushion Storage- Front Cupholder
- Front Facing Manual Reclining Vinyl Rear Seat- Front Map Lights- Full Cloth Headliner
- Garage Door Transmitter- HVAC -inc: Underseat Ducts and Console Ducts
- Heated Leather Steering Wheel- High Back Seats- Illuminated Glove Box
- Instrument Panel Bin, Dashboard Storage, Driver / Passenger And Rear Door Bins
- Locking Tailgate
- Manual Adjustable Front Head Restraints and Manual Adjustable Rear Head Restraints
- Manual Tilt Steering Column- Mini Overhead Console and 4 12V DC Power Outlets
- Outside Temp Gauge- Passenger Seat- Perimeter Alarm
- Rear 60/40 Split Folding Seat- Rear Cupholder- Redundant Digital Speedometer
- Seats w/Leatherette Back Material- Sentry Key Engine Immobilizer
- Smart Device Integration- Systems Monitor
- Uconnect Access Mobile Hotspot Internet Access
- Underhood And Pickup Cargo Box Lights- Urethane Gear Shifter Material
- Valet Function- Voice Recorder

## Mechanical

- Class V Towing Equipment -inc: Hitch, Brake Controller and Trailer Sway Control
- Engine: 6.4L Heavy Duty V8 HEMI w/MDS
- Transmission w/Driver Selectable Mode, Sequential Shift Control and Oil Cooler
- Transmission: 6-Speed Automatic (66RFE)- 180 Amp Alternator
- 2870# Maximum Payload- 3.73 Axle Ratio- 31 Gal. Fuel Tank
- 4-Wheel Disc Brakes w/4-Wheel ABS, Front And Rear Vented Discs, Brake Assist and Hill Hold Control
- 50 State Emissions- 730CCA Maintenance-Free Battery w/Run Down Protection
- Auto Locking Hubs- Electronic Transfer Case- Front Anti-Roll Bar- GVWR: 10,000 lbs
- HD Shock Absorbers- HD Suspension- Hydraulic Power-Assist Steering
- Multi-Link Front Suspension w/Coil Springs- Multi-Link Rear Suspension w/Coil Springs
- Part-Time Four-Wheel Drive- Single Stainless Steel Exhaust- Tip Start
- Trailer Wiring Harness

King of Cars and Trucks

King of Cars and Trucks

View this car on our website at [njtruckking.com/6914334](http://njtruckking.com/6914334)

Website: [njtruckking.com](http://njtruckking.com)

Phone: 856-693-3181

Map: [1229 Broadway, Westville, New Jersey 08093](#)

