

2018 Ram 2500 Tradesman Manual Diesel 4x4

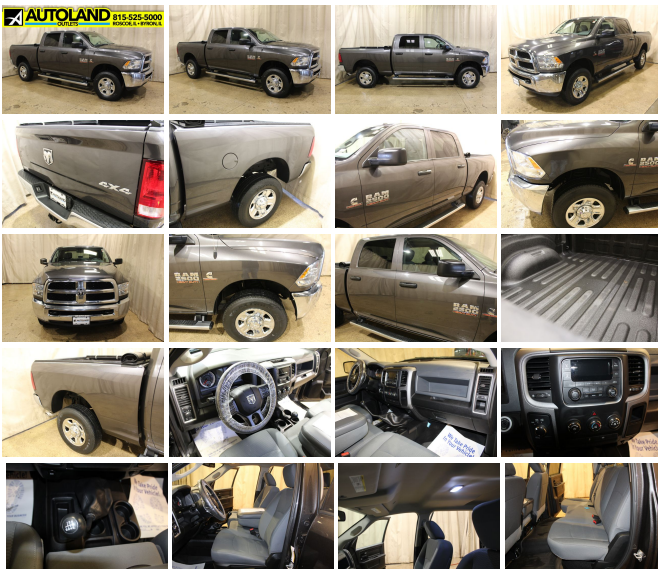
View this car on our website at autolandoutlets.com/6910288/ebrochure



Our Price **\$63,740**

Specifications:

| | |
|---------------|--------------------------------------|
| Year: | 2018 |
| VIN: | 3C6UR5CLXJG277186 |
| Make: | Ram |
| Stock: | 10695 |
| Model/Trim: | 2500 Tradesman Manual Diesel 4x4 |
| Condition: | Pre-Owned |
| Body: | Pickup Truck |
| Exterior: | Granite Crystal Metallic Clearcoat |
| Engine: | ENGINE: 6.7L I6 CUMMINS TURBO DIESEL |
| Interior: | Black Cloth |
| Transmission: | TRANSMISSION: 6-SPEED MANUAL (G56) |
| Mileage: | 26,368 |
| Drivetrain: | 4 Wheel Drive |



2018 Dodge Ram 2500 Crew Cab, Diesel, 4x4, Manual. Options include Chrome Apperance Group, Popular Equipment Group, Chrome Tubular Side Steps, Electronic shift on the fly, 3.42 Rear Axle Ratio.

Straight from Toyota

Straight from Texas
folks call Autoland
Outlets at 1-815-525-
5000 let a friendly team
member tell you all
about stock number
10695.

Many of our trucks are Rust Free Southern Units!!! We Buy-Sell-Trade call us for Availability and Pricing 815-525-5000. Dealer Shall in no way be held liable for any errors or omissions to be found on these webpages. All prices are plus any applicable state taxes and service fees. We will do our best to keep all the information current and accurate, however the dealership should be contacted for final pricing and availability. Autoland Outlets is the midwest Premier Truck Store. Over 250 Trucks in Stock!! Over 150 are Diesels! 3/4 Tons, 1 Tons, Regular, Extended and Crew Cabs. Plus: Dump Trucks, Utility Trucks, and much more! Many New Trucks Arriving Daily!!! Thousands of Satisfied Customers! Over 25 Years in Business. Updated Daily 888-240-8674 ILLINOIS WARRANTY MAY APPLY CALL DEALERSHIP

FOR DETAILS

2018 Ram 2500 Tradesman Manual Diesel 4x4

Autoland Outlets - 877-319-6060 - View this car on our website at autolandoutlets.com/6910288/ebrochure

Our Location :



2018 Ram 2500 Tradesman Manual Diesel 4x4

Autoland Outlets - 877-319-6060 - View this car on our website at autolandoutlets.com/6910288/ebrochure

Installed Options

Interior

- 2 12V DC Power Outlets- 40/20/40 Split Bench Seat- Analog Display
- Cargo Area Concealed Storage- Cruise Control w/Steering Wheel Controls
- Day-Night Auto-Dimming Rearview Mirror- Delayed Accessory Power- Driver Seat
- Electronically Controlled Throttle- Fade-To-Off Interior Lighting- Front Center Armrest
- Front Cupholder- Full Cloth Headliner- Full Vinyl/Rubber Floor Covering
- Gauges -inc: Speedometer, Odometer, Voltmeter, Oil Pressure, Engine Coolant Temp, Tachometer, Oil Temperature, Transmission Fluid Temp, Engine Hour Meter and Trip Odometer
- Glove Box- HVAC -inc: Underseat Ducts and Console Ducts
- Heavy Duty Vinyl 40/20/40 Split Bench Seat
- Instrument Panel Bin, Dashboard Storage, Driver / Passenger And Rear Door Bins and 2nd Row Underseat Storage
- Interior Trim -inc: Metal-Look Instrument Panel Insert and Chrome/Metal-Look Interior Accents
- Locking Tailgate- Manual Adjust Seats
- Manual Adjustable Front Head Restraints and Manual Adjustable Rear Head Restraints
- Manual Air Conditioning- Manual Tilt Steering Column
- Partial Floor Console w/Storage and 2 12V DC Power Outlets- Passenger Seat
- Pickup Cargo Box Lights
- Power 1st Row Windows w/Driver And Passenger 1-Touch Up/Down - Power Door Locks
- Power Rear Windows- Rear Folding Seat- Seats w/Vinyl Back Material
- Sentry Key Engine Immobilizer- Systems Monitor- Urethane Gear Shifter Material
- Vinyl Rear Seat

Exterior

- Black Door Handles- Black Exterior Mirrors- Black Front Bumper- Black Grille
- Black Rear Step Bumper- Black Side Windows Trim and Black Front Windshield Trim
- Cargo Lamp w/High Mount Stop Light- Center Hub- Clearcoat Paint- Deep Tinted Glass
- Exterior Mirrors w/Heating Element- Fixed Rear Window- Front License Plate Bracket

- Full-Size Spare Tire Stored Underbody w/Crankdown
- Fully Automatic Aero-Composite Halogen Headlamps w/Delay-Off
- Fully Galvanized Steel Panels- Hemi Badge- Next Generation Engine Controller
- Power Side Mirrors w/Manual Folding- Regular Box Style- Steel Spare Wheel
- Tailgate Rear Cargo Access- Tires: LT245/70R17E BSW AS
- Variable Intermittent Wipers- Vendor Painted Cargo Box Tracking
- Wheels: 17" x 7.5" Steel Styled

Safety

- 2 12V DC Power Outlets- 40/20/40 Split Bench Seat- Analog Display
- Cargo Area Concealed Storage- Cruise Control w/Steering Wheel Controls
- Day-Night Auto-Dimming Rearview Mirror- Delayed Accessory Power- Driver Seat
- Electronically Controlled Throttle- Fade-To-Off Interior Lighting- Front Center Armrest
- Front Cupholder- Full Cloth Headliner- Full Vinyl/Rubber Floor Covering
- Gauges -inc: Speedometer, Odometer, Voltmeter, Oil Pressure, Engine Coolant Temp, Tachometer, Oil Temperature, Transmission Fluid Temp, Engine Hour Meter and Trip Odometer
- Glove Box- HVAC -inc: Underseat Ducts and Console Ducts
- Heavy Duty Vinyl 40/20/40 Split Bench Seat
- Instrument Panel Bin, Dashboard Storage, Driver / Passenger And Rear Door Bins and 2nd Row Underseat Storage
- Interior Trim -inc: Metal-Look Instrument Panel Insert and Chrome/Metal-Look Interior Accents
- Locking Tailgate- Manual Adjust Seats
- Manual Adjustable Front Head Restraints and Manual Adjustable Rear Head Restraints
- Manual Air Conditioning- Manual Tilt Steering Column
- Partial Floor Console w/Storage and 2 12V DC Power Outlets- Passenger Seat
- Pickup Cargo Box Lights
- Power 1st Row Windows w/Driver And Passenger 1-Touch Up/Down - Power Door Locks
- Power Rear Windows- Rear Folding Seat- Seats w/Vinyl Back Material
- Sentry Key Engine Immobilizer- Systems Monitor- Urethane Gear Shifter Material
- Vinyl Rear Seat

Mechanical

- 160 Amp Alternator- 2370# Maximum Payload- 3.73 Axle Ratio- 31 Gal. Fuel Tank
- 4-Wheel Disc Brakes w/4-Wheel ABS, Front And Rear Vented Discs, Brake Assist and Hill Hold Control
- 50 State Emissions- 730CCA Maintenance-Free Battery w/Run Down Protection
- Auto Locking Hubs- Class V Towing Equipment -inc: Hitch and Trailer Sway Control
- Engine: 5.7L V8 HEMI VVT- Front Anti-Roll Bar- GVWR: 9,000 lbs- HD Shock Absorbers
- HD Suspension- Hydraulic Power-Assist Steering- Manual Transfer Case
- Multi-Link Front Suspension w/Coil Springs- Multi-Link Rear Suspension w/Coil Springs
- Part-Time Four-Wheel Drive- Single Stainless Steel Exhaust- Tip Start
- Trailer Wiring Harness
- Transmission w/Driver Selectable Mode, Sequential Shift Control and Oil Cooler
- Transmission: 6-Speed Automatic (66RFE)

Option Packages

Factory Installed Packages

ENGINE: 6.7L I6 CUMMINS TURBO DIESEL

- inc: Selective Catalytic Reduction (Urea), 180 Amp Alternator, Cummins Turbo Diesel Badge, Tow Hooks, Current Generation Engine Controller, Diesel Exhaust Brake, GVWR: 10,000 lbs, RAM Active Air
- \$9,300

TRANSMISSION: 6-SPEED MANUAL (G56)

- inc: 3.42 Axle Ratio, Mini Floor Console

CHROME APPEARANCE GROUP

- inc: Bright Rear Bumper, Bright Grille, 18" Steel Spare Wheel, Wheels: 18" x 8.0" Steel Chrome Clad, Tires: LT275/70R18E BSW AS, Bright Front Bumper
- \$895

CHROME TUBULAR SIDE STEPS
\$695

ELECTRIC SHIFT-ON-THE-FLY
TRANSFER CASE
-inc: Storage Tray \$295

POPULAR EQUIPMENT GROUP
-inc: SiriusXM Satellite Radio, 1-Yr
SiriusXM Radio Service, For
More Info, Call 800-643-2112,
Carpet Floor Covering, Front &
Rear Floor Mats, Remote
Keyless Entry \$695

RADIO: UCONNECT 3.0
-inc: Integrated Voice Command
w/Bluetooth \$195

SPRAY IN BEDLINER
\$565

3.42 AXLE RATIO

QUICK ORDER PACKAGE 2EA
TRADESMAN
-inc: Engine: 6.7L I6 Cummins
Turbo Diesel, Transmission: 6-
Speed Manual (G56)

GRANITE CRYSTAL METALLIC
CLEARCOAT
\$200

DIESEL GRAY/BLACK, CLOTH 40/20/40
BENCH SEAT
\$315

Option Packages Total
\$13,155

Autoland Outlets
autolandoutlets.com
877-319-6060

13156 Love Rd
Roscoe, IL 61073

© 2022 AutoRevo - All rights reserved. - Powered by AutoRevo