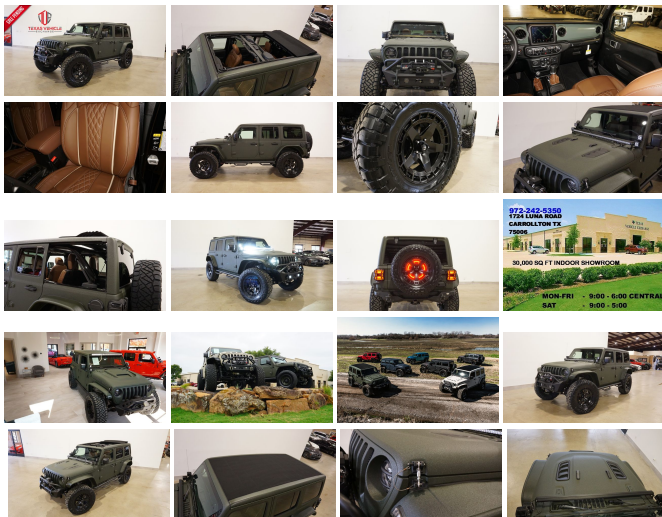


## 2021 Jeep Wrangler Unlimited Sport 4X4 SKY TOP,DUPONT KEVLAR,LIFT,NAV

View this car on our website at [tveauto.com/6909371/ebrochure](https://tveauto.com/6909371/ebrochure)



Our Price **\$79,900**

### Specifications:

Year:	2021
VIN:	1C4HJXDG8MW585963
Make:	Jeep
Stock:	585963
Model/Trim:	Wrangler Unlimited Sport 4X4 SKY TOP,DUPONT KEVLAR,LIFT,NAV
Condition:	Pre-Owned
Body:	SUV
Exterior:	Green
Engine:	ENGINE: 3.6L V6 24V VVT ETORQUE UPG I
Interior:	Brown Leather
Transmission:	TRANSMISSION: 8-SPEED AUTOMATIC (850RE)
Mileage:	51
Drivetrain:	4 Wheel Drive
Economy:	City 17 / Highway 23

NATION WIDE FINANCING

SUBMIT CREDIT APP [WWW.TVEAUTO.COM](https://www.tveauto.com)

OR CALL 972-242-5350

"TANK GREEN EDITION"

CUSTOM BUILT KEVLAR 2021 JEEP  
WRANGLER JL UNLIMITED SPORT 4X4  
WITH 25S PACKAGE

UPGRADES INCLUDE:

- \* TANK GREEN KEVLAR COATING
- \* SKY ONE-TOUCH POWER TOP WITH REMOVABLE REAR QUARTER WINDOWS
- \* CUSTOM ALEA BROWN LEATHER WITH TAN STITCHING
- \* FACTORY REMOTE START
- \* COLD WEATHER GROUP
- \* CONVENIENCE GROUP
- \* SUN AND SOUND PACKAGE
- \* FACTORY 8.4 INCH TOUCH SCREEN NAVIGATION WITH HD AM/FM/SIRIUS STEREO & ALPINE PREMIUM AUDIO SYSTEM
- \* FACTORY BACK-UP CAMERA
- \* U-CONNECT
- \* FAB FOURS STUBBY FRONT BUMPER WITH LED FOGLIGHTS
- \* FRONT D-RINGS & ISOLATORS (TANK GREEN)
- \* SMITTYBILT NEW GEN II "X20" 10,000 LB WATERPROOF AND WIRELESS CONTROL WINCH WITH SYNTHETIC ROPE
- \* FACTOR 55 PROLINK (BLACK)
- \* FACTORY LED HEADLIGHTS
- \* RUGGED RIDGE BLACK HEADLIGHT GUARDS
- \* MOPAR 10TH ANNIVERSARY RUBICON POWER DOME HOOD
- \* DRAKE OFF ROAD HOOD LATCHES
- \* BUSHWACKER JL FLAT STYLE FENDERS
- \* RUBICON EXPRESS 2.5" LIFT KIT WITH TERAFLX SPORT CONTROL ARMS & TERAFLX FALCON SERIES 3 SHOCKS & RESERVOIRS
- \* TERAFLX FALCON STABILIZER KIT

- \* VOSWITCH 6 CHANNEL CUSTOM INTEGRATED SWITCH PANEL
- \* 50" LED LIGHT BAR AND 4 RIGID INDUSTRIES DUALY D2 LED PILLAR LIGHTS
- \* SMITTYBILT BLACK TUBULAR STEPS
- \* MOPAR BLACK FUEL DOOR
- \* EVOLUTION 2 BLACK LED TAIL LIGHTS
- \* RUGGED RIDGE BLACK TAIL LIGHT GUARDS
- \* RUGGED RIDGE SPARTACUS HD HINGE KIT
- \* RUGGED RIDGE LED THIRD BRAKE LIGHT RING
- \* DV8 OFF ROAD REAR BUMPER
- \* REAR D-RINGS & ISOLATORS (TANK GREEN)
- \* ALL WEATHER FLOOR MATS
- \* TAZER JL PROGRAMMER WITH SPEEDOMETER CALIBRATION
- \* 20" FUEL SATIN BLACK "WARP" WHEELS
- \* BRAND NEW NITTO RIDGE GRAPPLER 37X13.50R/20 TIRES

WE BUILD EVERY JEEP WITH PRIDE! DO NOT HESITATE TO CALL US WITH THIS JEEP BUILD. WE CAN MAKE CHANGES TO THIS JEEP BUILD OR CUSTOM BUILD ANY JEEP TO YOUR PREFERENCE. GIVE US A CALL @ 972-242-5350 OR STOP BY FOR A TEST DRIVE. 1724 LUNA RD IN CARROLLTON - 2 MILES NORTH OF 635.

Our Location :



2021 Jeep Wrangler Unlimited Sport 4X4 SKY TOP,DUPONT KEVLAR,LIFT,NAV  
Texas Vehicle Exchange - 972-242-5350 - View this car on our website at [veauto.com/6909371/ebrochure](http://veauto.com/6909371/ebrochure)

Installed Options

Interior

- 6-Way Driver Seat -inc: Manual Recline, Height Adjustment, Fore/Aft Movement and Manual Lumbar Support
- Cloth Low-Back Bucket Seats
- Front Seats w/Cloth Back Material and Manual Driver Lumbar
- Full Carpet Floor Covering -inc: Carpet Front And Rear Floor Mats
- Gauges -inc: Speedometer, Odometer, Engine Coolant Temp, Tachometer, Engine Hour Meter, Trip Odometer and Trip Computer
- Manual Air Conditioning- Proximity Key For Push Button Start Only - Trip Computer
- 110 MPH Vehicle Max Speed Calibration- 2 12V DC Power Outlets
- 2 Seatback Storage Pockets
- 4-Way Passenger Seat -inc: Manual Recline and Fore/Aft Movement
- 60-40 Folding Split-Bench Front Facing Fold Forward Seatback Cloth Rear Seat
- Analog Display- Cargo Space Lights- Carpet Floor Trim, Carpet And Rubber Mat
- Compass- Cruise Control w/Steering Wheel Controls- Day-Night Rearview Mirror
- Delayed Accessory Power- Fade-To-Off Interior Lighting- Front And Rear Map Lights
- Front Center Armrest w/Storage
- Full Floor Console w/Locking Storage and 2 12V DC Power Outlets
- HVAC -inc: Console Ducts- Illuminated Front Cupholder- Illuminated Rear Cupholder
- Instrument Panel Bin, Dashboard Storage, Driver / Passenger And Rear Door Bins
- Interior Trim -inc: Metal-Look Instrument Panel Insert and Metal-Look Console Insert
- Locking Cargo Area Concealed Storage- Locking Glove Box
- Manual Adjustable Front Head Restraints and Foldable Rear Head Restraints
- Manual Tilt/Telescoping Steering Column- Outside Temp Gauge
- Redundant Digital Speedometer- Removable 3rd Row Windows
- Sentry Key Engine Immobilizer- Systems Monitor- Urethane Gear Shifter Material
- Vanity w/Driver And Passenger Auxiliary Mirror

Exterior

Option Packages

Factory Installed Packages

ENGINE: 3.6L V6 24V VVT ETORQUE UPG I	
-inc: 600 Amp Maintenance Free Battery, 48V Belt Starter Generator, GVWR: 5,460 lbs, Engine Oil Cooler, Delete Alternator	\$1,500
TRANSMISSION: 8-SPEED AUTOMATIC (850RE)	
	\$1,500
COLD WEATHER GROUP	
-inc: Heated Steering Wheel, Heated Front Seats	\$995
CONVENIENCE GROUP	
-inc: Universal Garage Door Opener	\$595
SUN AND SOUND PACKAGE	
-inc: Media Hub-2 USBS (Both Charge Only), Remote USB Port - Charge Only, 115V Auxiliary Power Outlet, 8.4" Radio & Premium Audio Group, Off-Road Info Pages, SiriusXM Traffic Plus, Alpine Premium Audio System, HD Radio, Radio: Uconnect 4C Nav w/8.4" Display, For Details, Visit DriveUconnect.com, Rear View Auto Dim Mirror, 1-Year SiriusXM Guardian Trial, 5-Year SiriusXM Travel Link Service, GPS Navigation, 5-Year SiriusXM Traffic Service, SiriusXM Travel Link, 4G LTE Wi-Fi Hot Spot, Emergency/Assistance Call, 8.4" Touchscreen Display, Sky 1-Touch Power Top, Rear Window Defroster, Rear Window Wiper/Washer,	\$4,190

- Black Front Bumper w/2 Tow Hooks- Black Rear Bumper w/1 Tow Hook
- Front Fog Lamps- Manual Convertible Top w/Fixed Roll-Over Protection
- Wheels: 17" x 7.5" Tech Silver Aluminum
- Aero-Composite Halogen Headlamps w/Delay-Off- Black Door Handles
- Black Fender Flares- Black Side Windows Trim- Body-Colored Grille- Clearcoat Paint
- Conventional Rear Cargo Access- Deep Tint Sunscreen Windows
- Full-Size Spare Tire Mounted Outside Rear
- Galvanized Steel/Aluminum/Magnesium Panels- Non-Lock Fuel Cap w/o Discriminator
- Removable Rear Window- Tires: 245/75R17 All Season- Variable Intermittent Wipers

Safety

- 6-Way Driver Seat -inc: Manual Recline, Height Adjustment, Fore/Aft Movement and Manual Lumbar Support
- Cloth Low-Back Bucket Seats
- Front Seats w/Cloth Back Material and Manual Driver Lumbar
- Full Carpet Floor Covering -inc: Carpet Front And Rear Floor Mats
- Gauges -inc: Speedometer, Odometer, Engine Coolant Temp, Tachometer, Engine Hour Meter, Trip Odometer and Trip Computer
- Manual Air Conditioning- Proximity Key For Push Button Start Only - Trip Computer
- 110 MPH Vehicle Max Speed Calibration- 2 12V DC Power Outlets
- 2 Seatback Storage Pockets
- 4-Way Passenger Seat -inc: Manual Recline and Fore/Aft Movement
- 60-40 Folding Split-Bench Front Facing Fold Forward Seatback Cloth Rear Seat
- Analog Display- Cargo Space Lights- Carpet Floor Trim, Carpet And Rubber Mat
- Compass- Cruise Control w/Steering Wheel Controls- Day-Night Rearview Mirror
- Delayed Accessory Power- Fade-To-Off Interior Lighting- Front And Rear Map Lights
- Front Center Armrest w/Storage
- Full Floor Console w/Locking Storage and 2 12V DC Power Outlets
- HVAC -inc: Console Ducts- Illuminated Front Cupholder- Illuminated Rear Cupholder
- Instrument Panel Bin, Dashboard Storage, Driver / Passenger And Rear Door Bins
- Interior Trim -inc: Metal-Look Instrument Panel Insert and Metal-Look Console Insert
- Locking Cargo Area Concealed Storage- Locking Glove Box
- Manual Adjustable Front Head Restraints and Foldable Rear Head Restraints
- Manual Tilt/Telescoping Steering Column- Outside Temp Gauge
- Redundant Digital Speedometer- Removable 3rd Row Windows
- Sentry Key Engine Immobilizer- Systems Monitor- Urethane Gear Shifter Material
- Vanity w/Driver And Passenger Auxiliary Mirror

Mechanical

- 4-Wheel Disc Brakes w/4-Wheel ABS, Front Vented Discs, Brake Assist and Hill Hold Control
- Engine: 3.6L V6 24V VVT UPG I w/ESS - Transmission: 6-Speed Manual
- 1233# Maximum Payload- 180 Amp Alternator- 21.5 Gal. Fuel Tank- 3 Skid Plates
- 3.45 Rear Axle Ratio- 50 State Emissions
- 650CCA Maintenance-Free Battery w/Run Down Protection- Auto Locking Hubs
- Aux Battery- Brake Actuated Limited Slip Differential
- Electro-Hydraulic Power Assist Steering- Engine Oil Cooler
- Front And Rear Anti-Roll Bars- GVWR: 5,400 lbs- Gas-Pressurized Shock Absorbers
- Leading Link Front Suspension w/Coil Springs- Manual Transfer Case
- Normal Duty Suspension- Part-Time Four-Wheel Drive- Single Stainless Steel Exhaust
- Stop-Start Dual Battery System- Towing Equipment -inc: Trailer Sway Control
- Trailing Arm Rear Suspension w/Coil Springs

Removable Rear Quarter Windows, Power Top  
Quarter Window Storage Bag, Console Bin Task  
Light

TECHNOLOGY GROUP

-inc: Google Android Auto, Selectable Tire Fill  
Alert, SiriusXM Satellite Radio, SiriusXM Radio  
Service, For More Info, Call 800-643-2112, USB  
Host Flip, Integrated Center Stack Radio, Air  
Conditioning w/Auto Temp Control, GPS Antenna  
Input, Cluster 7.0" TFT Color Display, 7.0"  
Touchscreen Display, Apple CarPlay, Air Filtering

\$995

QUICK ORDER PACKAGE 25S SPORT S

-inc: Engine: 3.6L V6 24V VVT eTorque UPG I,  
Transmission: 8-Speed Automatic (850RE), Front  
1-Touch Down Power Windows, Speed Sensitive  
Power Locks, Power Heated Mirrors, Automatic  
Headlamps, Leather Wrapped Steering Wheel,  
Security Alarm, Remote Keyless Entry, Sun  
Visors w/Illuminated Vanity Mirrors

\$3,200

Option Packages Total

\$12,975

Texas Vehicle Exchange

tveauto.com

972-242-5350

1724 Luna Road

Carrollton, TX 75006

© 2024 AutoRevo - All rights reserved. - Powered by AutoRevo