

2014 Mercedes-Benz S 63 AMG 3d Burmester, Carbon Fiber, LOADED

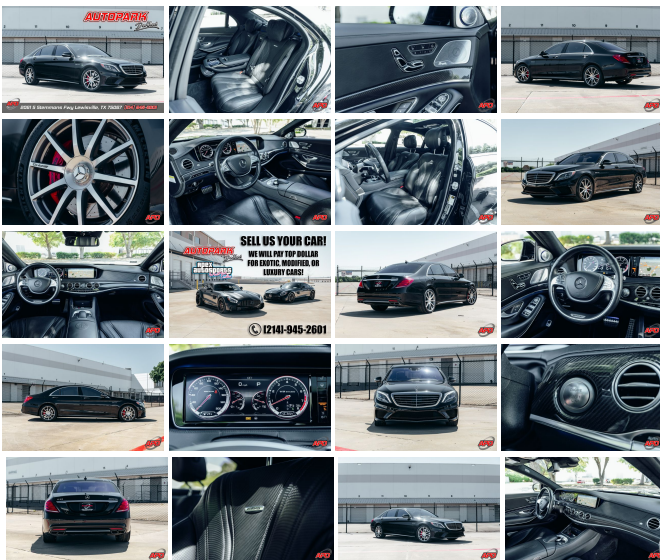
View this car on our website at autoparkdallas.com/6907290/ebrochure



Website Price **\$49,995**

Specifications:

Year:	2014
VIN:	WDDUG7JB0EA043279
Make:	Mercedes-Benz
Stock:	1622-TR
Model/Trim:	S 63 AMG 3d Burmester, Carbon Fiber, LOADED
Condition:	Pre-Owned
Body:	Sedan
Exterior:	Obsidian Black Metallic
Engine:	Engine: 5.5L DOHC Bi-Turbo 32-Valve V8
Interior:	Black Leather
Transmission:	Transmission: 7-Speed AMG SPEEDSHIFT MCT Automatic
Mileage:	56,333
Drivetrain:	All Wheel Drive
Economy:	City 15 / Highway 23



AutoPark Dallas is thrilled to offer you this **JAW-DROPPING** 2014 Mercedes-Benz S 63 AMG for sale! The **ABSOLUTE** top of the line Mercedes-Benz that the moment you sit in this S 63 AMG, you will understand the time and effort into making these beauties. Precisely handcrafted by a Master Technician at Mercedes-Benz, is only one part of a long list of why these Mercedes-Benz start with a MSRP tag well in the higher hundred thousand range. The beauty of this AMG with the Obsidian Black Metallic exterior & Black Exclusive Nappa Leather interior mixes together in perfect harmony with the beastly 5.5L DOHC Bi-Turbo 32-Valve V8 engine under the hood! Do. Not. HESITATE! To come check out German Luxury as this S 63 AMG Sedan sits here in our indoor 16,000 Sq Ft Showroom located in Addison, TX amongst our inventory of 100+ other unique and luxury vehicles!

2014 Mercedes-Benz S 63 AMG

* MSRP = \$164,975 !*

* 2 OWNER !*

* Clean CarFax !*

* LOW MILEAGE !*

* Driver Assistance Package !*

*** Warmth & Comfort Package !***

Stunning Obsidian Black Metallic Exterior

Luxurious Black Exclusive Nappa Leather Interior

****RARE!**** AMG Carbon Fiber & Piano Black Lacquer Trim

Hands Free Bluetooth

Intelligent Cruise Control

Active Navigation w/ Traffic Reports

Voice Command System

Bluetooth Audio

Heated & Cooled Front Row Seats

Front Row Massage Seats

*** Burmester High-End 3-D Surround Sound System !***

20" AMG Silver 10-Spoke Forged Wheels

Front & Rear Reverse Sensors

Back-Up Camera w/ Birdseye View

Sport & Comfort Drive Mode

Push Button Start

Digital Dashboard

Powered Trunk

Panoramic Sunroof w/ Powered Sunshade

Manual Mode w/ Paddle Shifters

Steering Wheel Mounted Controls

Dual Climate Controls

Multi-Zone Air Conditioning

Powered Front Row Seats

Powered Rear Seats

Driver & All Passenger Seat Memory

Engine Auto Stop-Start Feature

Mobile Hotspot Internet Access

In-Dash Mounted 6-Disc CD

Speed Compensated Volume Control

5.5L DOHC Bi-Turbo 32-Valve V8 Engine

7-Speed AMG SPEEDSHIFT MCT Automatic Transmission

Full-Time 4MATIC All-Wheel Drive

Professionally Detailed!

Well Maintained!

*** Free CarFax Report !***

*** A MUST SEE IN PERSON !***

AND SO MUCH MORE!!!

Financing is available!

Check out our Payment Calculator to get an estimate on your monthly payments!

OR

Get pre-approved in no time by filling out a credit application on the 'Finance' section of our website!

We also offer MANY different Extended Warranty options!

Check out our Google Reviews by
Clicking this LINK!

Referrals and Testimonials is what our business is built on!

The team here at AutoPark Dallas, is dedicated to offering a level of customer service not usually found in the automobile industry. Thanks to years of extensive car buying / selling experience, we pursue quality used and new vehicles that are hand-picked from factory sources. Our love for automobiles and dislike of traditional dealership tactics is what motivates us to provide the service we do! The pride we take in continuing this service long after the vehicle has been delivered is what we strive for! Looking forward to making every effort to see that our customer is completely satisfied and a friend for life!

Pre-purchase inspections are always welcomed!

We also offer airport pick-up, competitive financing options, free CarFax Reports, Car Shipping nationwide, Extended Warranty plans, and so much more!

Trade-In(s) are always accepted or sell us your used car (MODIFIED OR NOT)! Please call or text for more information about Trade-Ins or selling your car to us @ (214) 945-2601!

#(214) 945-2601

Call or Text **Anytime!**

Se habla Español

WE BUY CARS!

WWW.AUTOPARKDALLAS.COM

2014 Mercedes-Benz S 63 AMG 3d Burmester, Carbon Fiber, LOADED
 Auto Park Dallas - (214) 945-2601 - View this car on our website at autoparkdallas.com/6907290/ebrochure

Vehicle History Report : as Of 05/07/2024



Snapshot

2014 MERCEDES-BENZ S-CLASS S 63 AMG

- No accidents or damage reported to CARFAX
- 28 Service history records
- 2 Previous owners
- Personal vehicle
- Last owned in Oklahoma
- 56,333 Last reported odometer reading



FREE CARFAX Report

See the full CARFAX Report for additional information

*carfax Snapshot is a reflection of available information on the date the report was pulled. carfax is constantly being updated with new information and is subject to change at any time.

Our Location :



2014 Mercedes-Benz S 63 AMG 3d Burmester, Carbon Fiber, LOADED
 Auto Park Dallas - (214) 945-2601 - View this car on our website at autoparkdallas.com/6907290/ebrochure

Installed Options

Interior

- Bench Front Facing Rear Seat - Leather/Genuine Wood Steering Wheel w/Auto Tilt-Away
- Seats w/Leatherette Back Material- 2 Seatback Storage Pockets
- 3 12V DC Power Outlets- 3 12V DC Power Outlets and 1 AC Power Outlet
- Active Multicontour Seats -inc: hot stone massage, Power Seats w/Memory, Heated & Active Ventilated Front Seats
- Air Filtration- Ashtray- Cargo Area Concealed Storage- Cargo Net- Cargo Space Lights
- Carpet Floor Trim and Carpet Trunk Lid/Rear Cargo Door Trim - Compass
- Cruise Control- Day-Night Auto-Dimming Rearview Mirror- Delayed Accessory Power
- Digital/Analog Display
- Driver And Passenger Visor Vanity Mirrors w/Driver And Passenger Illumination and Illuminated Rear Visor Mirror
- Driver Foot Rest- Driver Seat

Option Packages

Factory Installed Packages

AIR BALANCE PACKAGE -inc: Air Balance Package, ionization, perfume and active charcoal filtration	\$350
AMG CARBON FIBER & PIANO BLACK LACQUER TRIM	\$4,450
BURMESTER HIGH-END 3D SURROUND SOUND SYSTEM -inc: 24 Speakers, 1540 Watts (9 tweeters, 8 midrange units, 4 midrange woofers, 2 frontbass, 1 subwoofer), 24-channel amplifier, analogue	\$6,400

- Dual Zone Front Automatic Air Conditioning w/Front Infrared - Engine Immobilizer
- FOB Controls -inc: Cargo Access, Windows and Sunroof/Convertible Roof
- Fade-To-Off Interior Lighting- Front And Rear Cigar Lighter(s)
- Front And Rear Map Lights- Front Center Armrest and Rear Center Armrest w/Storage
- Front Cupholder- Full Carpet Floor Covering -inc: Carpet Front And Rear Floor Mats
- Full DINAMICA Simulated Suede Headliner
- Full Floor Console w/Covered Storage, Mini Overhead Console w/Storage, 3 12V DC Power Outlets and 1 AC Power Outlet
- Gauges -inc: Speedometer, Odometer, Engine Coolant Temp, Tachometer, Trip Odometer and Trip Computer
- HVAC -inc: Underseat Ducts, Residual Heat Recirculation, Headliner/Pillar Ducts and Console Ducts
- Homelink Garage Door Transmitter- Illuminated Locking Glove Box
- Interior Trim -inc: Genuine Wood/Leather Instrument Panel Insert, Genuine Wood Door Panel Insert, Leather/Genuine Wood Console Insert, Aluminum/Metal-Look Interior Accents and MB-TEX Leatherette Upholstered Dashboard
- Leather Door Trim Insert
- Memory Settings -inc: Driver And Passenger Seats, Door Mirrors, Steering Wheel, Head Restraints and HVAC
- Mobile Hotspot Internet Access- Outside Temp Gauge- Passenger Seat
- Perforated Nappa Leather Upholstery -inc: MB-TEX covered dash top and door panels w/top stitching, unique AMG seat design, AMG badge in seat backrests
- Perimeter Alarm- Power 1st Row Windows w/Front And Rear 1-Touch Up/Down
- Power Anti-Whiplash w/Tilt Front Head Restraints and Power w/Tilt Rear Head Restraints
- Power Door Locks w/Autolock Feature- Power Fuel Flap Locking Type
- Power Rear Windows and w/Power Sun Blinds- Power Tilt/Telescoping Steering Column
- Proximity Key For Doors And Push Button Start - Rear Cupholder
- Redundant Digital Speedometer
- Refrigerated/Cooled Box Located In The Console, Driver / Passenger And Rear Door Bins
- Remote Keyless Entry w/Integrated Key Transmitter, 4 Door Curb/Courtesy, Illuminated Entry, Illuminated Ignition Switch and Panic Button
- Remote Releases -Inc: Proximity Cargo Access- Smart Device Integration
- Systems Monitor- Tracker System- Trip Computer- Trunk/Hatch Auto-Latch
- Urethane Gear Shifter Material- Valet Function- Ventilated Front Seats

Exterior

- Wheels: 20" AMG 5-Spoke- Aluminum Panels
- Body-Colored Front Bumper w/Metal-Look Rub Strip/Fascia Accent
- Body-Colored Power Heated Auto Dimming Side Mirrors w/Power Folding and Turn Signal Indicator
- Body-Colored Rear Bumper w/Metal-Look Rub Strip/Fascia Accent
- Chrome Door Handles- Chrome Grille
- Chrome Side Windows Trim and Black Front Windshield Trim - Clearcoat Paint
- Cornering Lights- Door Auto-Latch
- Express Open/Close Sliding And Tilting Glass Panorama 1st Row Sunroof w/Power Sunshade
- Fixed Glass 2nd Row Sunroof w/Power Sunshade
- Fixed Rear Window w/Defroster and Power Blind- LED Brakelights- Laminated Glass
- Light Tinted Glass- Metal-Look Bodyside Insert- Perimeter/Approach Lights
- Power Open And Close Trunk Rear Cargo Access
- Programmable Aero-Composite Led Low/High Beam Daytime Running Directionally Adaptive Auto High-Beam Headlamps w/Delay-Off
- Rain Detecting Variable Intermittent Wipers w/Heated Reservoir - Rear Fog Lamps
- Tires: P255/40R20 FR & P285/35R20 RR Performance

Safety

- Bench Front Facing Rear Seat - Leather/Genuine Wood Steering Wheel w/Auto Tilt-Away
- Seats w/Leatherette Back Material- 2 Seatback Storage Pockets
- 3 12V DC Power Outlets- 3 12V DC Power Outlets and 1 AC Power Outlet
- Active Multicontour Seats -inc: hot stone massage, Power Seats w/Memory, Heated & Active Ventilated Front Seats
- Air Filtration- Ashtray- Cargo Area Concealed Storage- Cargo Net- Cargo Space Lights
- Carpet Floor Trim and Carpet Trunk Lid/Rear Cargo Door Trim - Compass
- Cruise Control- Day-Night Auto-Dimming Rearview Mirror- Delayed Accessory Power
- Digital/Analog Display
- Driver And Passenger Visor Vanity Mirrors w/Driver And Passenger Illumination and Illuminated Rear Visor Mirror
- Driver Foot Rest- Driver Seat
- Dual Zone Front Automatic Air Conditioning w/Front Infrared - Engine Immobilizer
- FOB Controls -inc: Cargo Access, Windows and Sunroof/Convertible Roof
- Fade-To-Off Interior Lighting- Front And Rear Cigar Lighter(s)
- Front And Rear Map Lights- Front Center Armrest and Rear Center Armrest w/Storage
- Front Cupholder- Full Carpet Floor Covering -inc: Carpet Front And Rear Floor Mats

diplexer, additional amplifier for subwoofer, 5 sound presets (Surround, 3D-Surround, Pure, Easy Listening and Live) and Vehicle noise compensation (VNC), Dramatically reduces trunk space

DRIVER ASSISTANCE PACKAGE

-inc: CMS (Collision Mitigation System) Rear, DISTRONIC PLUS, DISTRONIC PLUS w/Steering Assist, PRE-SAFE Brake, BAS PLUS w/Cross Traffic Assist, CMS Lane, Active Blind Spot Assist, Active Lane Keeping Assist, PRE-SAFE PLUS, Control Code Driver Assistance Package **\$2,800**

EXCLUSIVE INTERIOR WOOD TRIM

-inc: additional wood in the following locations: in the front: wood door center panels, in the rear: wood door center panels and rear air vent cover, Additional trim is included on the back of the front seats only w/designo trims (727 and H06) **\$950**

RED BRAKE CALIPERS

SURROUND VIEW CAMERA PACKAGE

-inc: Control Code Surround View Camera **\$900**

WARMTH & COMFORT PACKAGE

-inc: Rear Heated Armrests, Control Code Warmth & Comfort Package, Power Rear Seats, Reduces trunk space, Memory Rear Seats, Heated Steering Wheel, Heated & Active Ventilated Rear Seats, Rear Variable Heated Seats, Front Heated Armrests **\$2,600**

OBSIDIAN BLACK METALLIC

BLACK, EXCLUSIVE LEATHER NAPPA UPHOLSTERY

-inc: leather dashboard, door panels and center tunnel, Exclusive AMG seat design w/unique diamond pattern stitching, diamond pattern perforations on the dashboard and door panel accent pieces, piping in contrasting color at the edge of the dashboard and door top panels, AMG badge in seat backrests **\$4,450**

WHEELS: 20" AMG SILVER 10-SPOKE FORGED

\$1,700

Option Packages Total

\$24,600

- Full DINAMICA Simulated Suede Headliner
- Full Floor Console w/Covered Storage, Mini Overhead Console w/Storage, 3 12V DC Power Outlets and 1 AC Power Outlet
- Gauges -inc: Speedometer, Odometer, Engine Coolant Temp, Tachometer, Trip Odometer and Trip Computer
- HVAC -inc: Underseat Ducts, Residual Heat Recirculation, Headliner/Pillar Ducts and Console Ducts
- Homelink Garage Door Transmitter- Illuminated Locking Glove Box
- Interior Trim -inc: Genuine Wood/Leather Instrument Panel Insert, Genuine Wood Door Panel Insert, Leather/Genuine Wood Console Insert, Aluminum/Metal-Look Interior Accents and MB-Tex Leatherette Upholstered Dashboard
- Leather Door Trim Insert
- Memory Settings -inc: Driver And Passenger Seats, Door Mirrors, Steering Wheel, Head Restraints and HVAC
- Mobile Hotspot Internet Access- Outside Temp Gauge- Passenger Seat
- Perforated Nappa Leather Upholstery -inc: MB-Tex covered dash top and door panels w/top stitching, unique AMG seat design, AMG badge in seat backrests
- Perimeter Alarm- Power 1st Row Windows w/Front And Rear 1-Touch Up/Down
- Power Anti-Whiplash w/Tilt Front Head Restraints and Power w/Tilt Rear Head Restraints
- Power Door Locks w/Autolock Feature- Power Fuel Flap Locking Type
- Power Rear Windows and w/Power Sun Blinds- Power Tilt/Telescoping Steering Column
- Proximity Key For Doors And Push Button Start - Rear Cupholder
- Redundant Digital Speedometer
- Refrigerated/Cooled Box Located In The Console, Driver / Passenger And Rear Door Bins
- Remote Keyless Entry w/Integrated Key Transmitter, 4 Door Curb/Courtesy, Illuminated Entry, Illuminated Ignition Switch and Panic Button
- Remote Releases -Inc: Proximity Cargo Access- Smart Device Integration
- Systems Monitor- Tracker System- Trip Computer- Trunk/Hatch Auto-Latch
- Urethane Gear Shifter Material- Valet Function- Ventilated Front Seats

Mechanical

- 150 Amp Alternator- 2.47 Axle Ratio- 21.1 Gal. Fuel Tank
 - 4-Corner Auto-Leveling Suspension
 - 4-Wheel Disc Brakes w/4-Wheel ABS, Front And Rear Vented Discs, Brake Assist, Hill Hold Control and Electric Parking Brake
 - 78-Amp/Hr 520CCA Maintenance-Free Battery
 - Automatic w/Driver Control Height Adjustable Automatic w/Driver Control Ride Control Sport Tuned Adaptive Suspension
 - Dual Stainless Steel Exhaust w/Chrome Tailpipe Finisher
 - Electric Power-Assist Speed-Sensing Steering- Engine Auto Stop-Start Feature
 - Engine: 5.5L DOHC Bi-Turbo 32-Valve V8- Front And Rear Anti-Roll Bars
 - Full-Time 4MATIC All-Wheel- Gas-Pressurized Shock Absorbers
 - Multi-Link Front Suspension w/Air Springs- Multi-Link Rear Suspension w/Air Springs
 - Transmission w/Driver Selectable Mode and Oil Cooler
 - Transmission: 7-Speed AMG SPEEDSHIFT MCT Automatic
-



autoparkdallas.com

(214) 945-2601

2061 S Stemmons Fwy

Lewisville, TX 75067

© 2024 AutoRevo - All rights reserved. - Powered by AutoRevo