

2007 Chevrolet Corvette Z06 w/ 2LZ Package & LOW MILEAGE!

Website Price \$39,995

View this vehicle on our website at autoparkdallas.com



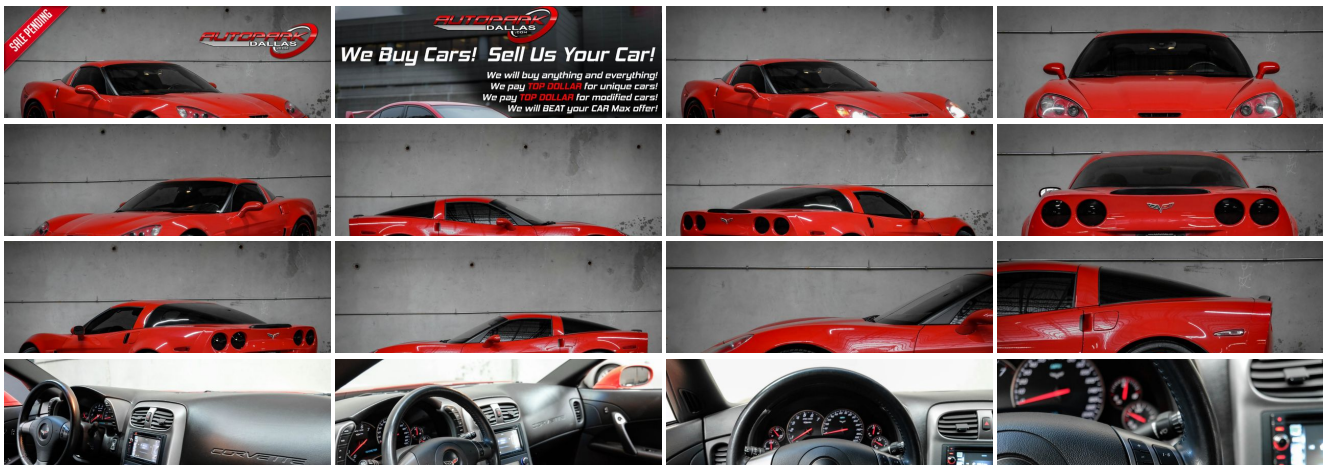
(214) 945-2601

2061 S Stemmons Fwy , Lewisville, TX 75067

Photos

Details

Contact





Specifications:

Year:	2007
VIN:	1G1YY26EX75109033
Make:	Chevrolet
Model/Trim:	Corvette Z06 w/ 2LZ Package & LOW MILEAGE!
Condition:	Pre-Owned
Body:	Coupe
Exterior:	Victory Red
Engine:	ENGINE, 7.0L (427 CI) LS7 V8 SFI
Interior:	Ebony Leather
Transmission:	TRANSMISSION, 6-SPEED MANUAL, SHORT-THROW
Mileage:	35,996
Drivetrain:	Rear Wheel Drive
Economy:	City 16 / Highway 26

Vehicle Description

AutoPark Dallas is thrilled to offer you this Low Mileage 2007 Chevrolet Corvette Z06 sitting on Corvette FR-18 Spyders Black w/ Red Stripe Wheels for sale! There is not a single person that does not know what the Chevrolet Corvette is with its signature look and being the notorious low-profile sports car. These bald eagle screaming U.S. born beauties are a thrill to drive and always stand out in any crowded car meet or parking lot. Our Z06 here at APD has been handled with care, the mileage kept low, and overall just in amazing condition! Do. Not. HESITATE! To swing by to check out this Corvette Z06 parked in our indoor 16,000 Sq Ft Showroom located in Dallas , Texas amongst our inventory of 100+ other Performance / Modified and Luxury cars!

2007 Chevrolet Corvette Z06

[CLICK HERE FOR A VIDEO WALK AROUND](#)

* Clean CarFax !*

* LOW MILEAGE !*

* 2 Sets of Keys !*

* 2LZ Package !*

Victory Red Exterior

Ebony Black Leather Interior

* Pioneer Stereo System w/ Navigation !*

* Corvette FR-18 Spyders Black Wheels w/ Removable Red Stripe !*

* Blacked-Out Tail Lights !*

Heated Driver & Passenger Seats

Comfort Access Keyless Entry

Push Button Start

Cruise Control

Dual Climate Controls

Steering Wheel Mounted Controls

Rear-view Mirror w/ Compass

Driver Seat Memory

BOSE Premium Audio System

7.0L LS7 V8 SFI Engine

6-Speed Manual Transmission

Rear Wheel Drive

Professionally Detailed!

Well Maintained!

* Free CarFax Report !*

AND SO MUCH MORE!!!

Financing is available!

Check out our Payment Calculator to get an estimate on your monthly payments!

OR

Get pre-approved in no time by filling out a credit application on the 'Finance' section of our website!

We also offer MANY different Extended Warranty options!

Check out our Google Reviews by *Clicking* this LINK!

Referrals and Testimonials is what our business is built on!

The team here at AutoPark Dallas, is dedicated to offering a level of customer service not usually found in the automobile industry. Thanks to years of extensive car buying / selling experience, we pursue quality used and new vehicles that are hand-picked from factory sources. Our love for automobiles and dislike of traditional dealership tactics is what motivates us to provide the service we do! The pride we take in continuing this service long after the vehicle has been delivered is what we strive for! Looking forward to making every effort to see that our customer is completely satisfied and a friend for life!

Pre-purchase inspections are always welcomed!

We also offer airport pick-up, competitive financing options, free CarFax Reports, Car Shipping nationwide, Extended Warranty plans, and so much more!

Trade-In(s) are always accepted or sell us your used car (MODIFIED OR NOT)! Please call or text for more information about Trade-Ins or selling your car to us @ (214) 945-2601!

#(214) 945-2601

Call or Text **Anytime!**

Se habla Español

WE BUY CARS!

WWW.AUTOPARKDALLAS.COM

Installed Options

Option Packages

Interior

- Air conditioning, dual-zone automatic climate control with individual climate settings for driver and right-front passenger and outside temperature display
- Air filtration system with pollen filter- Antenna, integral, hidden
- Audio system, AM/FM stereo with CD player and MP3 playback, seek-and-scan, digital clock, auto-tone control, Radio Data System (RDS), automatic volume and Theftlock. Includes (U66) 7-speaker system
- Console, floor, 2 covered cup holders, ashtray with cigar lighter, auxiliary power outlet and CD storage
- Cruise control, electronic with set and resume speed - Defogger, rear-window, electric
- Door locks, power programmable with lockout protection- Floor mats, carpeted
- Hatch release, push button open
- Head-Up Display, with dot-matrix readouts for street mode, track mode with g-meter, vehicle speed, engine rpm and readings from key gauges including water temperature and oil pressure
- Instrumentation, electronic analog with Driver Information Center and 2-line display
- Keyless Access, with push button start and 2 remote transmitters that enable automatic door unlock and open by touching door switch
- Lighting, interior with courtesy, cargo and glovebox
- Mirror, inside rearview manual day/night, includes dual reading lights
- Oil life monitoring system- Seat adjuster, driver 6-way power
- Seats, front bucket with perforated leather seating surfaces, Z06 embroidery and contrasting stitching
- Steering column, Tilt-Wheel, manual- Steering wheel, 3-spoke leather-wrapped
- Storage, with lockable glovebox, center console and 2 rear compartments with covers (One compartment contains battery on Z06.)
- Theft-deterrent system, vehicle, push button start, immobilizer and audible visual alarm
- Tire Pressure Monitor System, air pressure sensors in each tire, pressure display in Driver Information Center
- Visors, driver and front passenger illuminated vanity mirrors
- Windows, power with driver and passenger Express-Down

Exterior

- Daytime Running Lamps- Fog lamps, front, integral in front fascia
- Glass, Solar-Ray light-tinted
- Headlamps, dual projector lamps, Xenon, High-Intensity Discharge (HID) low-beam, tungsten-halogen high-beam with automatic exterior lamp control
- Mirrors, outside heated power-adjustable, body-color- Wipers, front intermittent

Safety

- Air conditioning, dual-zone automatic climate control with individual climate settings for driver and right-front passenger and outside temperature display
- Air filtration system with pollen filter- Antenna, integral, hidden
- Audio system, AM/FM stereo with CD player and MP3 playback, seek-and-scan, digital clock, auto-tone control, Radio Data System (RDS), automatic volume and Theftlock. Includes (U66) 7-speaker system
- Console, floor, 2 covered cup holders, ashtray with cigar lighter, auxiliary power outlet and CD storage
- Cruise control, electronic with set and resume speed - Defogger, rear-window, electric
- Door locks, power programmable with lockout protection- Floor mats, carpeted
- Hatch release, push button open
- Head-Up Display, with dot-matrix readouts for street mode, track mode with g-meter, vehicle speed, engine rpm and readings from key gauges including water temperature and oil pressure
- Instrumentation, electronic analog with Driver Information Center and 2-line display
- Keyless Access, with push button start and 2 remote transmitters that enable automatic door unlock and open by touching door switch
- Lighting, interior with courtesy, cargo and glovebox
- Mirror, inside rearview manual day/night, includes dual reading lights
- Oil life monitoring system- Seat adjuster, driver 6-way power
- Seats, front bucket with perforated leather seating surfaces, Z06 embroidery and contrasting stitching
- Steering column, Tilt-Wheel, manual- Steering wheel, 3-spoke leather-wrapped
- Storage, with lockable glovebox, center console and 2 rear compartments with covers (One compartment contains battery on Z06.)
- Theft-deterrent system, vehicle, push button start, immobilizer and audible visual alarm
- Tire Pressure Monitor System, air pressure sensors in each tire, pressure display in Driver Information Center
- Visors, driver and front passenger illuminated vanity mirrors
- Windows, power with driver and passenger Express-Down

Mechanical

- Wheels, Z06 Silver-painted aluminum, 18" x 9.5" (45.7 cm x 24.1 cm) front and 19" x 12" (48.3 cm x 30.5 cm) rear

Factory Installed Packages

ENGINE, 7.0L (427 CI) LS7 V8 SFI

with dry sump oil system (505 hp [376.6 kW] @
6300 rpm, 470 lb-ft of torque [634.5 N-m] @
4800 rpm)

TRANSMISSION, 6-SPEED MANUAL, SHORT-THROW

(Includes (GU6) 3.42 axle ratio.)

AIR BAGS, FRONTAL AND SIDE-IMPACT, DRIVER AND FRONT PASSENGER WITH PASSENGER SENSING SYSTEM

(Always use safety belts and the correct child restraints for your child's age and size. Even in vehicles equipped with air bags and the Passenger Sensing System, children are safer when properly secured in a rear seat. Never place a rear-facing infant restraint in the front seat of any vehicle with an active frontal air bag. See the vehicle's Owners Manual and child safety seat instructions for more safety information.)

LICENSE PLATE BRACKET, FRONT

MEMORY PACKAGE

recalls 2 driver "presets" for 6-way power seat, outside mirrors and telescoping steering column

MIRROR, INSIDE REARVIEW AUTO-DIMMING WITH COMPASS

includes dual reading lights

STEERING WHEEL CONTROLS, MOUNTED AUDIO CONTROLS

UNIVERSAL HOME REMOTE

includes garage door opener, 3-channel programmable, located on driver visor

XM SATELLITE RADIO.

With a wide variety of programming, XM has something to excite any driver. Whether you want to be entertained or informed, to laugh, think, or sing, XM has the perfect channel for you-coast-to-coast, and in digital-quality sound. 3 trial months-no obligation.

EMISSIONS, FEDERAL REQUIREMENTS

SOLID PAINT

PREFERRED EQUIPMENT GROUP

includes (AJ7) Air bags, frontal and side-impact, (US9) Audio system, AM/FM stereo with 6-disc, in-dash CD changer and MP3 playback, (U2K) XM Satellite Radio, (UK3) Steering wheel controls, mounted audio controls, Enhanced Acoustic Package, Cargo net, in rear compartment area, (D42) Luggage shade, (AAB) Memory Package, (DD8) Mirror, inside rearview auto-dimming with compass, (KA1) Seats, heated driver and front passenger, (N37) Steering column, power telescopic with manual tilt, (UG1) Universal Home Remote, (DD0) Mirrors, outside heated power-adjustable and driver-side auto-dimming, body-color

\$3,485

HIGHWEAR NUANCE LEATHER SEAT TRIM

SEATS, FRONT BUCKET WITH PERFORATED LEATHER SEATING SURFACES

Z06 embroidery and contrasting stitching

Option Packages Total

(45.3 cm x 30.48 cm) rear

- Active handling, improves traction and enhances vehicle stability
- Brakes, 4-wheel antilock, 4-wheel disc- Engine access, rear opening hood
- Engine, 7.0L (427 ci) LS7 V8 SFI with dry sump oil system (505 hp [376.6 kW] @ 6300 rpm, 470 lb-ft of torque [634.5 N-m] @ 4800 rpm)
- Exhaust, dual mode aluminized stainless-steel with 4" polished stainless- steel tips
- Rear axle, 3.42 ratio, limited slip- Rear wheel drive
- Steering, power, speed-sensitive, rack-and-pinion
- Tires, front P275/35ZR18 Eagle F1 Supercar, extended mobility
- Tires, rear P325/30ZR19 Eagle F1 Supercar, extended mobility
- Traction control, all-speed
- Transmission, 6-speed manual, short-throw (Includes (GU6) 3.42 axle ratio.)
- Z06 Performance Package, 4-wheel independent, includes transverse composite springs, power steering, engine oil, axle and transmission coolers, stiffer springs and stabilizer bars, specific shock absorbers, larger brakes with 6- piston front and 4-piston rear cross-drilled rotors and specific tires

\$3,485



Auto Park Dallas

View this car on our website at autoparkdallas.com/6907166

Website: autoparkdallas.com

Phone: (214) 945-2601

Map: [2061 S Stemmons Fwy, Lewisville, TX 75067](#)

