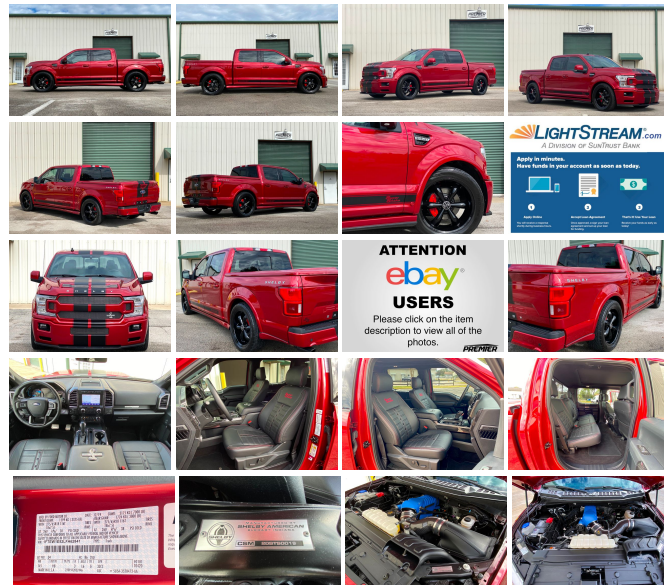


3075 Leon Rd
Jacksonville , FL 32246

2020 Ford F-150 Shelby Super Snake

Nolan Hill

View this car on our website at premierautomotivesource.com/6905127/ebrochure



Our Price **\$0**

Specifications:

Year:	2020
VIN:	1FTEW1E52LFA62841
Make:	Ford
Model/Trim:	F-150 Shelby Super Snake
Condition:	Pre-Owned
Body:	Pickup Truck
Exterior:	Rapid Red Metallic Tinted Clearcoat
Engine:	ENGINE: 5.0L V8
Interior:	Black Leather
Mileage:	1,950
Drivetrain:	4 Wheel Drive
Economy:	City 15 / Highway 21

**FORD F-150 CREW CAB SHELBY®
SUPER SNAKE
- TRUCK #19 -**

- SHELBY® 770 HP WHIPPLE™
SUPERCHARGER -

- AIR INTAKE WITH HIGH FLOW FILTER
& CARBON FIBER TUBE -

- PERFORMANCE ALUMINUM HEAT
EXCHANGER -

- UPGRADED FUEL INJECTORS/SPARK
PLUGS & BILLET THROTTLE BODY -

- BORLA PERFORMANCE EXHAUST -

- SHELBY® PERFORMANCE PROGRAMMER
TUNED TO 770 HP -

- SHELBY® 22' WHEELS -

- PERFORMANCE STAGE 2 SUSPENSION
LOWERING BY SHELBY®

LOWERING BY SHELBY® -

- SHELBY® TUNED FRONT COILOVERS AND REAR SHOCKS -
- ADJUSTABLE REAR SWAY BAR -
- SHELBY® BODY APPEARANCE PACKAGE -
 - FLARES - VENTS - HOOD - GRILL - INTERIOR - LOGOS/EMBLEMS -
 - REMOTE START SYSTEM -
 - 360° VIEW CAMERA AND BACK UP SENSORS -
 - B&O SOUND SYSTEM -
- FORDPASS CONNECT 4G WI-FI HOTSPOT MODEM -
- HEATED LEATHER WRAPPED STEERING WHEEL -
- FRONT AND SECOND ROW HEATED SEATS -
- WE TAKE TRADE INS -
- WE SELL & SHIP WORLDWIDE -

- CALL OR TEXT NOLAN @ 904-382-7230 -

- FACETIME WALK AROUND VIDEO AVAILABLE -

EXTENDED FINANCING TERMS AVAILABLE WITH APPROVED CREDIT FROM WOODSIDE CREDIT, JJ BEST BANC OR LIGHTSTREAM.

<http://woodsidecredit.com>

<http://jjbest.com>

<http://lightstream.com>

Ford F-150 Crew Cab Shelby® Super Snake, Truck #19, Shelby® 770HP Whipple™ Supercharger, Air intake with high flow filter w/oversized carbon fiber tube, Performance aluminum heat exchanger, Upgraded fuel injectors/spark plugs, Billet Throttle body, Borla Performance exhaust, Shelby® performance programmer tuned to 770HP, 22"

Shelby® Retro wheels, Performance Stage 2 suspension lowering by Shelby®, Shelby® tuned front coilovers and rear shocks, adjustable rear sway bar, Shelby® body appearance package including flares, vents, hood, grill, interior, logos and emblems. Remote start, Navigation, 360° view cameras and back up sensors, B&O Sound system, FORDPASS Connect 4G Wi-fi hotspot modem, Heated leather wrapped steering wheel, Front seats heated and cooled, heated rear seats, adjustable pedals, moonroof, satellite radio ready, factory tow package, tinted windows. Polished and ceramic coated by The Ceramic Pros in Jacksonville. The Carfax reports no accidents or issues. We are selling this amazing truck on consignment. Sold with 2 keys, books, and window stickers.

Call or text Nolan: 904-382-7230. Trades accepted. All applicable sales tax, title, registration and a \$299 document fees apply. ALL INVENTORY IS STORED INDOORS AND SHOWN BY APPOINTMENT

Our Location :



2020 Ford F-150 Shelby Super Snake
Premier Automotive Source LLC - - View this car on our website at premierautomotivesource.com/6905127/ebrochure

Installed Options

Interior

- Cruise Control w/Steering Wheel Controls- Door Mirrors and Pedals
- FOB Controls -inc: Cargo Access
- Full Carpet Floor Covering -inc: Carpet Front And Rear Floor Mats
- Gauges -inc: Speedometer, Odometer, Voltmeter, Oil Pressure, Engine Coolant Temp, Tachometer, Inclinator, Transmission Fluid Temp, Trip Odometer and Trip Computer
- Interior Trim -inc: Simulated Wood/Metal-Look Instrument Panel Insert, Cabback Insulator, Simulated Wood/Metal-Look Door Panel Insert and Chrome Interior Accents
- Leather-Trimmed 40/20/40 Front Seat -inc: 4-way adjustable driver/passenger headrests, heated and ventilated 10-way power driver and passenger w/power lumbar and memory driver's seat
- Manual Tilt/Telescoping Steering Column
- Power 1st Row Windows w/Driver And Passenger 1-Touch Up/Down
- Power Door Locks w/Autolock Feature- Power Rear Windows
- Proximity Key For Doors And Push Button Start
- Remote Keyless Entry w/Integrated Key Transmitter, Illuminated Entry and Panic Button
- SYNC 3 -inc: enhanced voice recognition communications and entertainment system, 8" LCD capacitive touchscreen in center stack w/swipe capability, pinch-to-zoom capability included when equipped w/available voice-activated touchscreen navigation system, AppLink, 911 Assist, Apple CarPlay and Android Auto compatibility and 2 smart charging USB ports
- Smart Device Remote Engine Start- Trip Computer- 2 Seatback Storage Pockets
- 3 12V DC Power Outlets
- 60-40 Folding Split-Bench Front Facing Fold-Up Cushion Rear Seat - Compass
- Day-Night Auto-Dimming Rearview Mirror- Delayed Accessory Power
- Digital/Analog Display
- Driver And Passenger Visor Vanity Mirrors w/Driver And Passenger Illumination
- Driver Seat- Fade-To-Off Interior Lighting
- FordPass Connect 4G Mobile Hotspot Internet Access- Front And Rear Map Lights
- Front Center Armrest w/Storage and Rear Center Armrest- Front Cupholder
- Full Cloth Headliner- Full Overhead Console w/Storage and 3 12V DC Power Outlets

Option Packages

Factory Installed Packages

ENGINE: 5.0L V8	
-inc: auto start-stop technology and flex-fuel capability, GVWR: 7,000 lbs Payload Package, 3.31 Axle Ratio	\$1,000
Option Packages Total	\$1,000

- Glove Box- HVAC -inc: Underseat Ducts
- Instrument Panel Bin, Dashboard Storage, Driver / Passenger And Rear Door Bins, 1st Row Underseat Storage and 2nd Row Underseat Storage
- Keypad- Leather/Metal-Look Steering Wheel- Manual Adjustable Rear Head Restraints
- Outside Temp Gauge- Passenger Seat- Perimeter Alarm- Pickup Cargo Box Lights
- Power Adjustable Pedals- Rear Cupholder- Redundant Digital Speedometer
- Securilock Anti-Theft Ignition (pats) Engine Immobilizer- Systems Monitor
- Urethane Gear Shifter Material
- Voice Activated Dual Zone Front Automatic Air Conditioning

Exterior

- Autolamp Fully Automatic Aero-Composite Halogen Auto High-Beam Daytime Running Lights Preference Setting Headlamps w/Delay-Off
- Body-Colored Power Heated Side Mirrors w/Driver Auto Dimming, Power Folding and Turn Signal Indicator
- Chrome Front Bumper w/Body-Colored Rub Strip/Fascia Accent and 2 Tow Hooks
- Full-Size Spare Tire Stored Underbody w/Crankdown
- Tailgate/Rear Door Lock Included w/Power Door Locks- Tires: P275/65R18 OWL A/S
- Variable Intermittent Wipers
- Wheels: 18" Machined-Aluminum -inc: flash gray painted pockets- Aluminum Panels
- Black Side Windows Trim and Black Front Windshield Trim - Body-Colored Door Handles
- Body-Colored Wheel Well Trim- Cargo Lamp w/High Mount Stop Light- Chrome Grille
- Chrome Rear Step Bumper- Clearcoat Paint- Deep Tinted Glass- Front Fog Lamps
- Perimeter/Approach Lights- Power Rear Window w/Defroster- Regular Box Style
- Steel Spare Wheel- Tailgate Rear Cargo Access

Safety

- Cruise Control w/Steering Wheel Controls- Door Mirrors and Pedals
- FOB Controls -inc: Cargo Access
- Full Carpet Floor Covering -inc: Carpet Front And Rear Floor Mats
- Gauges -inc: Speedometer, Odometer, Voltmeter, Oil Pressure, Engine Coolant Temp, Tachometer, Inclinator, Transmission Fluid Temp, Trip Odometer and Trip Computer
- Interior Trim -inc: Simulated Wood/Metal-Look Instrument Panel Insert, Cabback Insulator, Simulated Wood/Metal-Look Door Panel Insert and Chrome Interior Accents
- Leather-Trimmed 40/20/40 Front Seat -inc: 4-way adjustable driver/passenger headrests, heated and ventilated 10-way power driver and passenger w/power lumbar and memory driver's seat
- Manual Tilt/Telescoping Steering Column
- Power 1st Row Windows w/Driver And Passenger 1-Touch Up/Down
- Power Door Locks w/Autolock Feature- Power Rear Windows
- Proximity Key For Doors And Push Button Start
- Remote Keyless Entry w/Integrated Key Transmitter, Illuminated Entry and Panic Button
- SYNC 3 -inc: enhanced voice recognition communications and entertainment system, 8" LCD capacitive touchscreen in center stack w/swipe capability, pinch-to-zoom capability included when equipped w/available voice-activated touchscreen navigation system, AppleLink, 911 Assist, Apple CarPlay and Android Auto compatibility and 2 smart charging USB ports
- Smart Device Remote Engine Start- Trip Computer- 2 Seatback Storage Pockets
- 3 12V DC Power Outlets
- 60-40 Folding Split-Bench Front Facing Fold-Up Cushion Rear Seat - Compass
- Day-Night Auto-Dimming Rearview Mirror- Delayed Accessory Power
- Digital/Analog Display
- Driver And Passenger Visor Vanity Mirrors w/Driver And Passenger Illumination
- Driver Seat- Fade-To-Off Interior Lighting
- FordPass Connect 4G Mobile Hotspot Internet Access- Front And Rear Map Lights
- Front Center Armrest w/Storage and Rear Center Armrest- Front Cupholder
- Full Cloth Headliner- Full Overhead Console w/Storage and 3 12V DC Power Outlets
- Glove Box- HVAC -inc: Underseat Ducts
- Instrument Panel Bin, Dashboard Storage, Driver / Passenger And Rear Door Bins, 1st Row Underseat Storage and 2nd Row Underseat Storage
- Keypad- Leather/Metal-Look Steering Wheel- Manual Adjustable Rear Head Restraints
- Outside Temp Gauge- Passenger Seat- Perimeter Alarm- Pickup Cargo Box Lights
- Power Adjustable Pedals- Rear Cupholder- Redundant Digital Speedometer
- Securilock Anti-Theft Ignition (pats) Engine Immobilizer- Systems Monitor
- Urethane Gear Shifter Material
- Voice Activated Dual Zone Front Automatic Air Conditioning

Mechanical

- Engine: 2.7L V6 EcoBoost -inc: auto start-stop technology
- Transmission w/SelectShift Sequential Shift Control
- Transmission: Electronic 10-Speed Automatic -inc: selectable drive modes: normal/tow-haul/snow-wet/EcoSelect/sport
- 1600# Maximum Payload- 200 Amp Alternator- 26 Gal Fuel Tank- 3.55 Axle Ratio

- 1000W maximum payload- 200 Amp Alternator- 20 Gal. Fuel Tank- 5.0L V8E engine
- 4-Wheel Disc Brakes w/4-Wheel ABS, Front And Rear Vented Discs, Brake Assist, Hill Hold Control and Electric Parking Brake
- 70-Amp/Hr 610CCA Maintenance-Free Battery w/Run Down Protection
- Auto Locking Hubs- Automatic Full-Time Four-Wheel Drive
- Class IV Trailer Hitch Receiver -inc: towing capability up to 6,000 lbs, on 3.3L V6 PFDI engine (99B) and 2.7L EcoBoost engine (99P) or up to 7,000 lbs, on 3.5L EcoBoost engine (994), 3.5L EcoBoost High Output engine (99G) and 5.0L V8 engine (995), smart trailer tow connector and 4-pin/7-pin wiring harness Ordering the Trailer Tow Package does not include Integrated Brake Controller (67T). Integrated Brake Controller (67T) is a standalone option and must be ordered separately.
- Double Wishbone Front Suspension w/Coil Springs
- Electric Power-Assist Speed-Sensing Steering- Electronic Transfer Case
- Front Anti-Roll Bar- GVWR: 6,600 lbs Payload Package
- Gas-Pressurized Shock Absorbers- Leaf Rear Suspension w/Leaf Springs
- Single Stainless Steel Exhaust- Towing Equipment -inc: Trailer Sway Control

DEALER POLICIES: Please review all photos carefully and ask questions prior to making an offer if there is anything you are not sure about. We welcome pre-sale inspections. Any descriptions we make of vehicles shall not be construed as any type of warranty. Our pictures are as thorough and precise as we can make them. Please be advised that this is not a brand new vehicle. It is a pre-owned vehicle and has previously been driven, so therefore with respect to the miles there will most likely be average wear and tear, such as minor scratches, minor dings, or small rock chips. We do our best to disclose any substantial blemishes in our photos and descriptions. If our vehicles include manuals, service records or extra sets of keys, it will be shown in the pictures and noted in the description. The advertised mileage is a round number and may vary slightly from the exact mileage due to demo and test drives. Once a vehicle leaves our premises, no refunds, credits, or adjustments, will be issued. All Vehicles are conveyed AS-IS. Dealer neither makes nor implies any warranty on this or any vehicle. Any dispute that may arise shall take place under the laws of the state of Florida, in the state of Florida and all sales are subject to binding Arbitration under the rules of the American Arbitration Association. All applicable sales tax, tag and title fees apply. When we receive a vehicle into our inventory, sometimes the title is being held by a bank or lender as collateral for the previous loan or payoff. Occasionally there is a delay in receiving the title from these lending institutions after payoff of the loan for up to two weeks. While we usually have the titles in our possession, there are instances where we may be waiting for the title to arrive. We guarantee clean titles on our vehicles unless otherwise noted. In some cases we may hold titles until cashiers checks or other funds are cleared or unless other arrangements were agreed upon. Titles will be sent via Fedex for proper tracking. Thank you for your patience and understanding.

Premier Automotive Source LLC

premierautomotivesource.com

3075 Leon Rd

Jacksonville , FL 32246

© 2024 AutoRevo - All rights reserved. - Powered by AutoRevo