



## 2014 RAM 2500 6.7 CUMMINS DIESEL 4X4 6 SPEED MANUAL RARE

**Our Price \$33,500**

View this vehicle on our website at [njtruckking.com](http://njtruckking.com)

King of Cars and Trucks

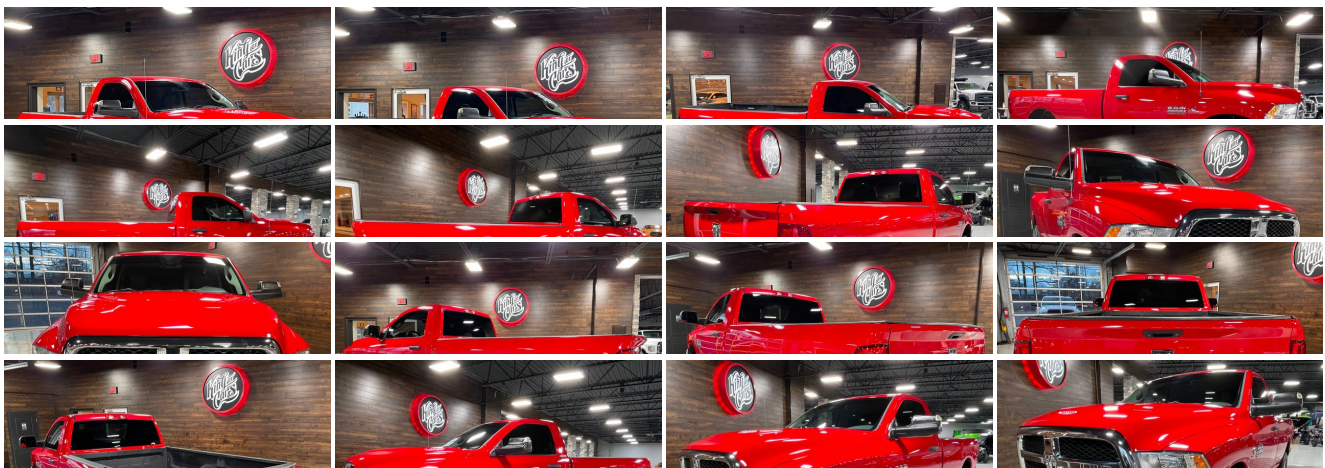
[856-693-3181](tel:856-693-3181)

1229 Broadway , Westville, New Jersey 08093

[Photos](#)

[Details](#)

[Contact](#)





## Specifications:

<b>Year:</b>	2014
<b>VIN:</b>	3C6MR5AL4EG323670
<b>Make:</b>	RAM 2500 6.7 CUMMINS DIESEL
<b>Model/Trim:</b>	4X4 6 SPEED MANUAL RARE
<b>Condition:</b>	Pre-Owned
<b>Body:</b>	Pickup Truck
<b>Exterior:</b>	Bright Red
<b>Engine:</b>	ENGINE: 6.7L I6 CUMMINS TURBO DIESEL
<b>Interior:</b>	Gray
<b>Transmission:</b>	TRANSMISSION: 6-SPEED MANUAL (G56)
<b>Mileage:</b>	101,884
<b>Drivetrain:</b>	4 Wheel Drive

## Vehicle Description

BUY IT NOW

RARE FIND

6-SPEED MANUAL 6.7 CUMMINS!

2014 RAM 2500 SRW 4X4

6.7L CUMMINS TURBO DIESEL

CLEAN CARFAX !

POWER OPTIONS

6-SPEED MANUAL TRANSMISSION

( 101,884 ORIGINAL / ACTUAL MILES )

EXCELLENT CONDITION

BONE STOCK POWERTRAIN

FACTORY WINDOW TINT

RUNS AND DRIVES 100%

ALWAYS SERVICED AND DETAILED

WILL NOT LAST!

RARE FIND

DON'T SNOOZE AND LOSE THIS ONE !

\$33,900

CALL / TEXT AARON 856-693-9370 WITH ANY QUESTIONS

## Installed Options

### Interior

- Heavy Duty Vinyl 40/20/40 Split Bench Seat - 2 12V DC Power Outlets- Analog Display
- Cruise Control w/Steering Wheel Controls- Day-Night Rearview Mirror
- Delayed Accessory Power- Driver Seat- Electronically Controlled Throttle
- Fade-To-Off Interior Lighting- Front Armrest w/Cupholders- Full Cloth Headliner
- Full Vinyl/Rubber Floor Covering
- Gauges -inc: Speedometer, Odometer, Voltmeter, Oil Pressure, Engine Coolant Temp, Tachometer, Oil Temperature, Transmission Fluid Temp, Engine Hour Meter and Trip Odometer
- Glove Box- Instrument Panel Bin, Dashboard Storage, Driver And Passenger Door Bins
- Interior Trim -inc: Metal-Look Instrument Panel Insert and Chrome/Metal-Look Interior Accents
- Manual 1st Row Windows- Manual Adjustable Front Head Restraints
- Manual Air Conditioning- Manual Tilt Steering Column- Mini Floor Console
- Passenger Seat- Pickup Cargo Box Lights- Sentry Key Engine Immobilizer
- Systems Monitor- Urethane Gear Shifter Material

### Exterior

- Full-Size Spare Tire Stored Underbody w/Crankdown- Tires: LT245/70R17E BSW AS
- Wheels: 17" x 7.5" Steel Styled- Black Door Handles- Black Front Bumper- Black Grille
- Black Manual Side Mirrors w/Manual Folding- Black Rear Step Bumper
- Black Side Windows Trim and Black Front Windshield Trim
- Cargo Lamp w/High Mount Stop Light- Center Hub- Clearcoat Paint
- Firestone Brand Tires- Fixed Rear Window- Front License Plate Bracket
- Fully Automatic Aero-Composite Halogen Headlamps w/Delay-Off
- Fully Galvanized Steel Panels- Light Tinted Glass- Manual Tailgate/Rear Door Lock
- Regular Box Style- Steel Spare Wheel- Tailgate Rear Cargo Access
- Variable Intermittent Wipers

### Safety

- Heavy Duty Vinyl 40/20/40 Split Bench Seat - 2 12V DC Power Outlets- Analog Display
- Cruise Control w/Steering Wheel Controls- Day-Night Rearview Mirror
- Delayed Accessory Power- Driver Seat- Electronically Controlled Throttle
- Fade-To-Off Interior Lighting- Front Armrest w/Cupholders- Full Cloth Headliner
- Full Vinyl/Rubber Floor Covering
- Gauges -inc: Speedometer, Odometer, Voltmeter, Oil Pressure, Engine Coolant Temp, Tachometer, Oil Temperature, Transmission Fluid Temp, Engine Hour Meter and Trip Odometer
- Glove Box- Instrument Panel Bin, Dashboard Storage, Driver And Passenger Door Bins
- Interior Trim -inc: Metal-Look Instrument Panel Insert and Chrome/Metal-Look Interior Accents
- Manual 1st Row Windows- Manual Adjustable Front Head Restraints
- Manual Air Conditioning- Manual Tilt Steering Column- Mini Floor Console
- Passenger Seat- Pickup Cargo Box Lights- Sentry Key Engine Immobilizer
- Systems Monitor- Urethane Gear Shifter Material

### Mechanical

- Engine: 5.7L V8 HEMI VVT -inc: 50 State Emissions
- Transmission w/Driver Selectable Mode, Sequential Shift Control and Oil Cooler
- Transmission: 6-Speed Automatic (66RFE)- 160 Amp Alternator
- 2660# Maximum Payload- 3.73 Rear Axle Ratio- 32 Gal. Fuel Tank
- 4-Wheel Disc Brakes w/4-Wheel ABS, Front And Rear Vented Discs, Brake Assist and Hill Hold Control
- 730CCA Maintenance-Free Battery w/Run Down Protection- Auto Locking Hubs
- Class V Towing Equipment -inc: Hitch and Trailer Sway Control - Front Anti-Roll Bar
- Front Bumper Sight Shields- GVWR: 9,000 lbs- HD Shock Absorbers
- Hydraulic Power-Assist Steering- Manual Transfer Case
- Multi-Link Front Suspension w/Coil Springs- Multi-Link Rear Suspension w/Coil Springs
- Part-Time Four-Wheel Drive- Single Stainless Steel Exhaust- Tip Start
- Trailer Wiring Harness

## Option Packages

### Factory Installed Packages

---

**ENGINE: 6.7L I6 CUMMINS TURBO DIESEL**  
-inc: 50 State Emissions, Selective Catalytic Reduction (Urea), 180 Amp Alternator, Cummins Turbo Diesel Badge, 5.5 Additional Gallons of Diesel, GVWR: 10,000 lbs, RAM Active Air, 28 Gallon Fuel Tank, Tow Hooks, Current Generation Engine Controller, Diesel Exhaust Brake

\$8,160

---

**TRANSMISSION: 6-SPEED MANUAL (G56)**  
-inc: 3.42 Rear Axle Ratio

### Option Packages Total

\$8,160

View this car on our website at [njtruckking.com/6903553](https://njtruckking.com/6903553)

Website: [njtruckking.com](https://njtruckking.com)

Phone: [856-693-3181](tel:856-693-3181)

Map: [1229 Broadway, Westville, New Jersey 08093](#)

