

## 2006 Porsche 911 Carrera S Cabriolet

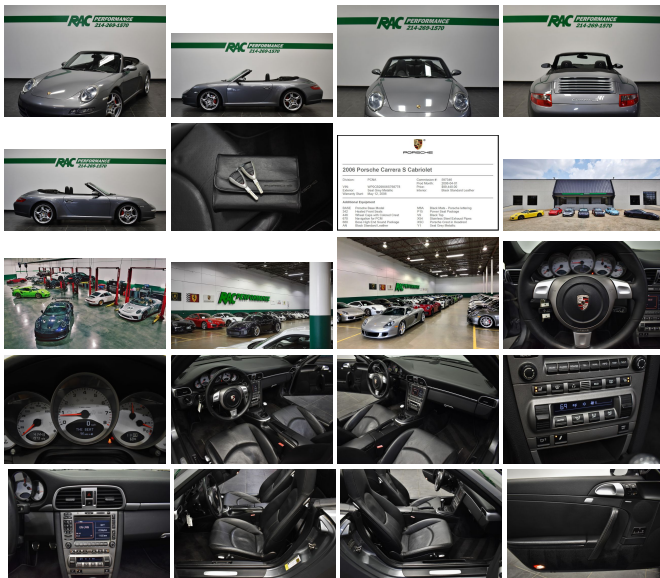
View this car on our website at [racperformance.com/6903490/ebrochure](http://racperformance.com/6903490/ebrochure)



Our Price **\$49,995**

## Specifications:

<b>Year:</b>	2006
<b>VIN:</b>	WP0CB299X6S768778
<b>Make:</b>	Porsche
<b>Stock:</b>	R3319
<b>Model/Trim:</b>	911 Carrera S Cabriolet
<b>Condition:</b>	Pre-Owned
<b>Body:</b>	Convertible
<b>Exterior:</b>	Seal Grey Metallic
<b>Engine:</b>	3.8L DOHC SMPI aluminum horizontally-opposed 24-valve 6-cyl engine
<b>Interior:</b>	Black Leather
<b>Transmission:</b>	6-SPEED MANUAL TRANSMISSION
<b>Mileage:</b>	41,037
<b>Drivetrain:</b>	Rear Wheel Drive
<b>Economy:</b>	City 18 / Highway 25



CLEAN CARFAX, 6-SPEED MANUAL TRANSMISSION, BOSE HIGH END SOUND PACKAGE, HEATED FRONT SEATS, FRESH INTERMEDIATE SERVICE, NEW REAR TIRES, NEW CAB-TOP RAMS, NEW INTERSTATE BATTERY, PARTIAL-FRONT PPF, RECENT CLUTCH W/ SLAVE CYLINDER, RECENT REAR MAIN SEAL, , SERVICE RECORDS DATING BACK TO 2016, CLEAR BRA, BOOKS + 2 KEYS, NAVIGATION FOR PCM, POWER SEAT PACKAGE, STAINLESS STEEL EXHAUST PIPES, PORSCHE CREST IN HEADREST, WHEEL CAPS WITH COLORED CREST, BLACK STANDARD LEATHER, BLACK MATS - PORSCHE LETTERING, BLACK TOP, SEAL GREY METALLIC!! This car has been inspected by our certified technicians and is ready to drive home. Upgrades are available at RAC Performance. TUNES, EXHAUST, WHEELS, TIRES and MORE!

Contact our professional sales staff at 214-269-1570 for any questions or additional information. We also offer competitive finance rates as low as 5.9%.

We hand pick only the finest automobiles to sell and every vehicle gets a rigorous internal inspection by our certified technicians. At our 9000 square foot state of the art facility, RAC Performance offers service on Porsche, RUF, Ferrari, Maserati and Lamborghini models. We offer dealership quality service and repairs at competitive prices and only sell the finest vehicles! RAC Performance cannot guarantee the availability of vehicle books/manuals, additional keys, or additional accessories with vehicle purchase, unless otherwise stated in the vehicle description or by an RAC sales professional.

Stop by and check out our state-of-the-art Service Department, Performance Shop and Huge 32,000 square foot Indoor Showroom!

We facilitate door-to-door shipping to anywhere in the world at an affordable price.

[www.RACPerformance.com](http://www.RACPerformance.com)

## Vehicle History Report : as Of 05/08/2024

**CARFAX**

**Snapshot**

**2006 PORSCHE 911 CARRERA S**



No accidents or damage reported to CARFAX



**9** Service history records



**5** Previous owners



Personal vehicle



Last owned in Texas



**41,316** Last reported odometer reading



**FREE CARFAX Report**

See the full CARFAX Report for additional information

\*carfax Snapshot is a reflection of available information on the date the report was pulled. carfax is constantly being updated with new information and is subject to change at any time.

## Our Location :



2006 Porsche 911 Carrera S Cabriolet

RAC Performance - 214-269-1570 - View this car on our website at [racperformance.com/6903490/ebrochure](http://racperformance.com/6903490/ebrochure)

## Installed Options

### Interior

- Automatic climate control w/carbon filter
- Front bucket seats-inc: length/height adjustments, pwr backrest adjustment
- Illuminated visor vanity mirrors- Leather-wrapped 3-spoke steering wheel w/Porsche crest
- Thicker leather-wrapped 3-spoke steering wheel w/Porsche crest- 2 + 2 Seating
- Adjustable steering column- Alarm system w/radar interior surveillance
- Alcantara roof lining- Anti-theft system-inc: immobilizer, interior sensor, remote control
- CD storage shelf- Central locking w/remote control- Cruise control
- Folding rear seat backrests- Footwell lighting- HomeLink universal garage door opener
- Instrumentation-inc: analog & digital speedometer, analog tachometer, digital odometer/trip odometer
- Integrated dual cup holders- Leather-wrapped shift knob & handbrake lever
- Locking glove box- Onboard computer- PCM w/5.8" color display, CD-player, 9-speakers
- Pwr windows-inc: one-touch up/down, anti-jam feature- Rear window defroster
- Remote hood/trunk releases- Standard leather interior

### Exterior

- Bi-Xenon headlights-inc: dynamic leveling, headlamp washers- Pwr folding soft top
- Pwr/heated color-keyed exterior mirrors- Rain-sensing front wipers
- Speed-dependent extendable rear spoiler

### Safety

- Automatic climate control w/carbon filter
- Front bucket seats-inc: length/height adjustments, pwr backrest adjustment
- Illuminated visor vanity mirrors- Leather-wrapped 3-spoke steering wheel w/Porsche crest
- Thicker leather-wrapped 3-spoke steering wheel w/Porsche crest- 2 + 2 Seating
- Adjustable steering column- Alarm system w/radar interior surveillance
- Alcantara roof lining- Anti-theft system-inc: immobilizer, interior sensor, remote control
- CD storage shelf- Central locking w/remote control- Cruise control
- Folding rear seat backrests- Footwell lighting- HomeLink universal garage door opener
- Instrumentation-inc: analog & digital speedometer, analog tachometer, digital odometer/trip odometer
- Integrated dual cup holders- Leather-wrapped shift knob & handbrake lever
- Locking glove box- Onboard computer- PCM w/5.8" color display, CD-player, 9-speakers
- Pwr windows-inc: one-touch up/down, anti-jam feature- Rear window defroster
- Remote hood/trunk releases- Standard leather interior

### Mechanical

- 19" Carrera S light alloy wheels
- 4-piston monobloc fixed alloy brake calipers w/vented discs
- Active brake differential (ABD)- Anti-lock braking system (ABS)
- Porsche stability management (PSM)- Pwr 4-wheel vented disc brakes
- Traction control (ASR)- 16.9 gallon fuel tank
- 3.8L DOHC SMPI aluminum horizontally-opposed 24-valve 6-cyl engine
- 6-speed manual transmission- Double inertia flywheel
- Force-sensitive pwr rack & pinion steering- Front/rear stabilizer bars
- Independent multi-link rear suspension w/coil springs
- MacPherson strut front suspension w/aluminum suspension components
- Motronic ME 7.8 electronic engine management system-inc: electronic throttle
- P235/35ZR19 performance front tires- P295/30ZR19 performance rear tires
- Porsche active suspension management system (PASM)- Rear wheel drive
- Vario-Cam Plus variable valve timing system

## Option Packages

### Factory Installed Packages

#### 6-SPEED MANUAL TRANSMISSION

BLACK FLOOR MAT W/PORSCHE LETTERING \$115

HEADRESTS EMBOSSED W/PORSCHE CREST \$270

HEATED FRONT SEATS \$480

PWR SEAT PKG  
-inc: driver memory, full pwr adjustment, driver lumbar adjust \$1,550

BOSE HIGH END SOUND PKG  
-inc: 13-speakers, 7-channel amplifier w/325 watts, audiopilot \$1,390

DVD-BASED NAVIGATION FOR PCM \$2,070

WHEEL CAPS W/COLORED PORSCHE CREST \$185

STANDARD LEATHER INTERIOR

METALLIC PAINT \$825

STANDARD LEATHER SEATS

Option Packages Total \$6,885

RAC Performance  
racperformance.com  
214-269-1570

3221 Skyline Dr.  
Carrollton, TX 75006

© 2024 AutoRevo - All rights reserved. - Powered by AutoRevo