



2018 Hyundai Elantra SE

Internet Special \$10,986

Regular Price \$15,969

View this vehicle on our website at superautosmiami.com

Super Autos Miami

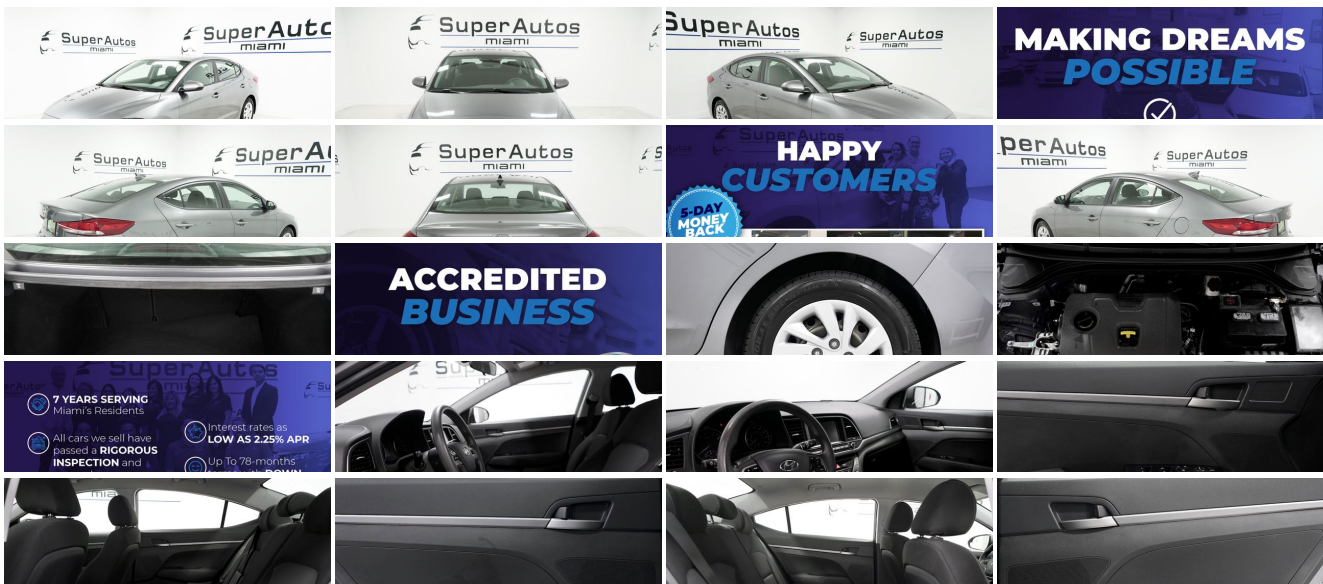
866-944-2882

8470 NW 58th St., Doral, FL 33166

Photos

Details

Contact



Specifications:

Year:	2018
VIN:	5NPD74LFXJH383888
Make:	Hyundai
Stock:	12925F
Model/Trim:	Elantra SE
Condition:	Pre-Owned
Body:	Sedan
Exterior:	Machine Gray
Engine:	Engine: 2.0L DOHC 16V 4-Cylinder D-CVVT MPI
Interior:	Black Cloth
Transmission:	6-Speed Automatic w/SHIFTRONIC
Mileage:	46,517
Drivetrain:	Front Wheel Drive
Economy:	City 29 / Highway 38

Vehicle Description

\$0 DOWN + FIRST PAYMENT IN 4 MONTHS (PROMO VALID FOR LIMITED TIME) *

* 5 Day Money-Back Guarantee!* We stand behind our vehicles. If for some reason you don't love it, you can return it or exchange it.

This is a Dealer-Certified, beautiful gorgeous magnificent marvelous delightful stunning flawless spectacular 2018 Hyundai Elantra SE 6AT, with NO STRUCTURAL DAMAGE, NO FLOOD DAMAGE, NO AIRBAG DEPLOYMENT, only one previous owner, a no-accidents history*, a clean Carfax report, a clean Title, and the balance of the manufacturer's Full Factory Warranty.

Our financing programs will give you the best approvals on any type of credit:excellent credit, average credit, bad credit, new credit, and even credit for applicants without a Social Security Number.

Down payments as low as \$0*, APR as low as 1.89%*, up to 120 days for your first payment*, and up to 84 months*.

SuperAutos Miami is your best choice for your next car purchase:we are an A+ rated business with the Better Business Bureau, a 2019 Top-Rated Dealer at CarGurus, a 4.8-Stars* rated business at Google, and WE HAVE THE BEST PRICES!! Even though it may seem super low, this vehicle's advertised price is its actual price.

Hablamos español!

Highlights for this vehicle include:

- In excellent condition
- Clean Title
- Only one previous owner
- No-accidents history reported to Carfax
- Passed our rigorous inspection and renewal process
- Balance of Manufacturer's Full Factory Warranty
- Powerful and fuel-efficient 4-cylinder engine
- Rear view camera
- Power front seat
- Bluetooth audio and hands-free phone system
- Remote keyless entry
- Power accessories
- 6-Speed Automatic Transmission
- And much more!

Enjoy a positive car-buying experience while getting a great deal at SuperAutos Miami.

Take this vehicle home TODAY! Call us or visit us and feel the difference.

*We are not responsible for any errors or omissions contained on these pages. Please verify any information in question with Super Autos Miami. * Sales Tax, Title, License Fee, Registration Fee, Dealer Delivery Fee and Inspection Fee are additional to the advertised price. Other fees may apply. Price valid through today's close of business. * If you are financing, Financing Bank Fees could apply depending on credit status. * Vehicle's owners, accidents, and history information are based on Carfax reports at time of posting. * Vehicles subject to prior sale. * Not all customer will qualify for Down payments as low as \$0*, APR as low as 1.89%*, up to 120 days for your first payment*, and up to 84 months*, your approval conditions may be

different. * Internet Special price may be lower than in-store Regular Price. If Internet Special price is not requested by customer, in-store Regular price may be applied. * Google business rating as of 06/20/20.

*Money-Back Guarantee is valid for 5 days or 300 miles, whichever comes first. Subject to an administrative charge of \$399.00, plus shipping/delivery fee (if applicable). To return or exchange your vehicle, we must receive it in the same condition it was delivered prior to 6 p.m. EST on the 5th calendar day after its purchase date, with its odometer showing less than 300 additional miles from the miles indicated in the purchase order. If the car's odometer shows more than 300 additional miles from the miles indicated in the purchase order, has been in an accident, damaged, modified or altered from the condition it was delivered in, we cannot accept the return and we cannot exchange it. If you choose to exchange, you won't be charged the \$399.00 administrative fee and you can receive only one additional vehicle, however, this additional vehicle will NOT come with our 5 Day Money-Back Guarantee. Day 1 of your 5 Day Money Back Guarantee begins when you accept the vehicle, regardless of time of day. See store for details. Some restrictions and conditions may apply. 5 Day Money Back Guarantee only valid for vehicles sold with less than 80,000 miles. Trade-in Specials vehicles don't qualify for our 5 Day Money-Back Guarantee.

† Estimated payment calculations are for reference purposes only. All figures are estimates only and are not guaranteed as accurate.

Installed Options

Interior

- Cloth Seat Trim
- Gauges -inc: Speedometer, Odometer, Engine Coolant Temp, Tachometer, Trip Odometer and Trip Computer
- Power 1st Row Windows w/Driver 1-Touch Down
- Power Door Locks w/Autolock Feature- Power Rear Windows
- Remote Keyless Entry w/Illuminated Entry, Illuminated Ignition Switch and Panic Button
- Trip Computer- 2 12V DC Power Outlets
- 6-Way Passenger Seat -inc: Manual Recline and Fore/Aft Movement
- 60-40 Folding Split-Bench Front Facing Fold Forward Seatback Rear Seat - Air Filtration
- Analog Display- Cargo Space Lights
- Carpet Floor Trim and Carpet Trunk Lid/Rear Cargo Door Trim
- Day-Night Rearview Mirror- Delayed Accessory Power
- Driver And Passenger Visor Vanity Mirrors- Driver Foot Rest- Driver Seat
- FOB Controls -inc: Cargo Access- Fade-To-Off Interior Lighting
- Front Bucket Seats -inc: 6-way adjustable manual driver's seat, height adjustment for both driver & passenger and adjustable front head restraints
- Front Center Armrest- Front Cupholder- Front Map Lights- Full Carpet Floor Covering
- Full Cloth Headliner
- Full Floor Console w/Covered Storage, Mini Overhead Console w/Storage and 2 12V DC Power Outlets
- Glove Box- HVAC -inc: Underseat Ducts
- Instrument Panel Covered Bin, Driver / Passenger And Rear Door Bins
- Interior Trim -inc: Metal-Look Instrument Panel Insert, Metal-Look Door Panel Insert, Metal-Look/Piano Black Console Insert and Metal-Look Interior Accents
- Manual Adjustable Rear Head Restraints- Manual Air Conditioning
- Manual Tilt/Telescoping Steering Column- Outside Temp Gauge- Perimeter Alarm
- Rear Cupholder- Redundant Digital Speedometer
- Remote Releases -Inc: Mechanical Cargo Access and Mechanical Fuel
- Urethane Gear Shifter Material

Exterior

- Black Grille w/Metal-Look Accents
- Black Side Windows Trim and Black Rear Window Trim - Body-Colored Door Handles
- Body-Colored Front Bumper
- Body-Colored Power Side Mirrors w/Convex Spotter and Manual Folding
- Body-Colored Rear Bumper w/Gray Rub Strip/Fascia Accent- Clearcoat Paint
- Compact Spare Tire Mounted Inside Under Cargo- Fixed Rear Window w/Defroster
- Fully Galvanized Steel Panels- Light Tinted Glass- Perimeter/Approach Lights
- Projector Beam Halogen Daytime Running Lights Preference Setting Headlamps w/Delay-Off
- Steel Spare Wheel- Tires: P195/65R15- Trunk Rear Cargo Access
- Variable Intermittent Wipers- Wheels: 15" x 6" Steel w/Covers

Safety

- Cloth Seat Trim
- Gauges -inc: Speedometer, Odometer, Engine Coolant Temp, Tachometer, Trip Odometer and Trip Computer
- Power 1st Row Windows w/Driver 1-Touch Down
- Power Door Locks w/Autolock Feature- Power Rear Windows
- Remote Keyless Entry w/Illuminated Entry, Illuminated Ignition Switch and Panic Button

- 1mp Computer- 2 12V DC Power Outlets
- 6-Way Passenger Seat -inc: Manual Recline and Fore/Aft Movement
- 60-40 Folding Split-Bench Front Facing Fold Forward Seatback Rear Seat - Air Filtration
- Analog Display- Cargo Space Lights
- Carpet Floor Trim and Carpet Trunk Lid/Rear Cargo Door Trim
- Day-Night Rearview Mirror- Delayed Accessory Power
- Driver And Passenger Visor Vanity Mirrors - Driver Foot Rest- Driver Seat
- FOB Controls -inc: Cargo Access- Fade-To-Off Interior Lighting
- Front Bucket Seats -inc: 6-way adjustable manual driver's seat, height adjustment for both driver & passenger and adjustable front head restraints
- Front Center Armrest- Front Cupholder- Front Map Lights- Full Carpet Floor Covering
- Full Cloth Headliner
- Full Floor Console w/Covered Storage, Mini Overhead Console w/Storage and 2 12V DC Power Outlets
- Glove Box- HVAC -inc: Underseat Ducts
- Instrument Panel Covered Bin, Driver / Passenger And Rear Door Bins
- Interior Trim -inc: Metal-Look Instrument Panel Insert, Metal-Look Door Panel Insert, Metal-Look/Piano Black Console Insert and Metal-Look Interior Accents
- Manual Adjustable Rear Head Restraints- Manual Air Conditioning
- Manual Tilt/Telescoping Steering Column- Outside Temp Gauge- Perimeter Alarm
- Rear Cupholder- Redundant Digital Speedometer
- Remote Releases -Inc: Mechanical Cargo Access and Mechanical Fuel
- Urethane Gear Shifter Material

Mechanical

- Transmission: 6-Speed Automatic w/SHIFTRONIC -inc: drive mode select (normal, eco & sport), Bluetooth Hands-Free Phone, Cruise Control, Steering Wheel Audio Controls
- 120 Amp Alternator- 14 Gal. Fuel Tank
- 60-Amp/Hr 550CCA Maintenance-Free Battery w/Run Down Protection
- Electric Power-Assist Speed-Sensing Steering
- Engine: 2.0L DOHC 16V 4-Cylinder D-CVVT MPI- Front Anti-Roll Bar
- Front Disc/Rear Drum Brakes w/4-Wheel ABS, Front Vented Discs, Brake Assist and Hill Hold Control
- Front-Wheel Drive- Gas-Pressurized Shock Absorbers- Single Stainless Steel Exhaust
- Strut Front Suspension w/Coil Springs- Torsion Beam Rear Suspension w/Coil Springs

Super Autos Miami

Super Autos Miami

View this car on our website at superautosmiami.com/6903287

Website: superautosmiami.com

Phone: [866-944-2882](tel:866-944-2882)

Map: [8470 NW 58th St, Doral, FL 33166](#)

