



2013 RAM 2500 SRW CUMMINS DIESEL 6-SPEED MANUAL 4X4 70K MILE KILLER LOOK RARE

Our Price \$41,900

View this vehicle on our website at njtruckking.com

King of Cars and Trucks

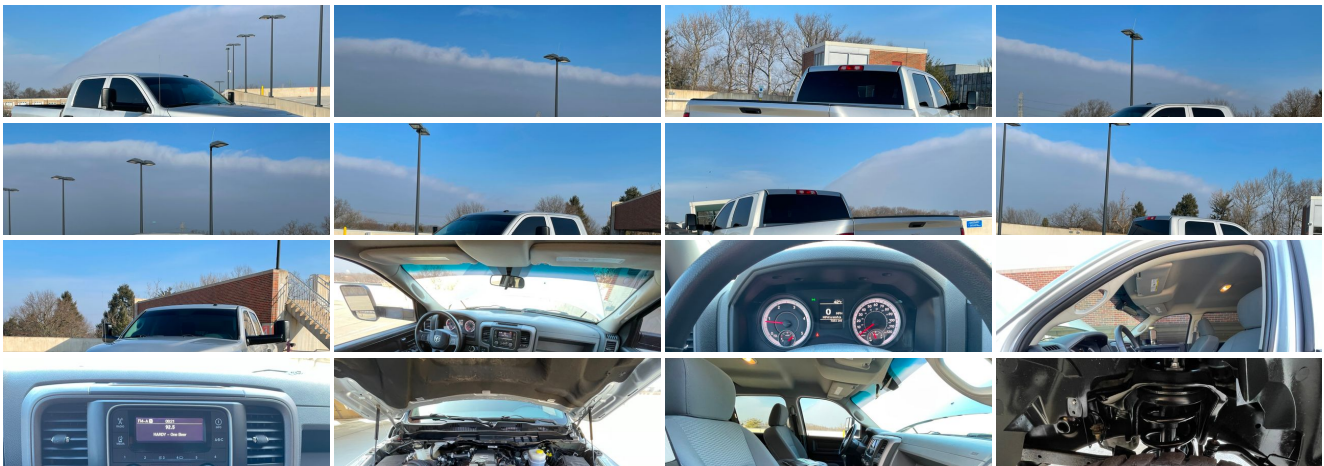
[856-693-3181](tel:856-693-3181)

1229 Broadway , Westville, New Jersey 08093

[Photos](#)

[Details](#)

[Contact](#)





Specifications:

Year:	2013
VIN:	3C6UR5CL0DG520864
Make:	RAM 2500 SRW CUMMINS
Model/Trim:	DIESEL 6-SPEED MANUAL 4X4 70K MILE KILLER LOOK RARE
Condition:	Pre-Owned
Body:	Pickup Truck
Exterior:	Silver
Engine:	6.7L I6 CUMMINS TURBO DIESEL ENGINE
Interior:	Gray
Transmission:	6-SPEED MANUAL TRANSMISSION W/OD
Mileage:	70,511
Drivetrain:	4 Wheel Drive

Vehicle Description

6-SPEED MANUAL 6.7L CUMMINS!

2013 RAM 2500 SRW 4X4

6.7L CUMMINS TURBO DIESEL

CLEAN CARFAX !

6-SPEED MANUAL TRANSMISSION

(ONLY 70,511 ORIGINAL / ACTUAL MILES)

EXCELLENT CONDITION

LEVELED

FUEL WHEELS

TOYO TIRES

EXHAUST

RUNS AND DRIVES 100%

ALWAYS SERVICED AND DETAILED

EXCELLENT CONDITION

WILL NOT LAST!

RARE FIND

DON'T SNOOZE AND LOSE THIS ONE !

\$41,900

CALL / TEXT ROB 856-381-6621 WITH ANY QUESTIONS

Installed Options

Interior

- HD vinyl 40/20/40 split bench seat - Pwr locks- 12V pwr outlet
- 2nd row in-floor storage bins- 4-spoke steering wheel- Air conditioning
- Black instrument panel bezel- Black vinyl floor covering
- Driver/passenger assist handles- Front armrest w/cupholders
- Instrument cluster w/display screen -inc: vehicle info center, 120-MPH primary speedometer
- Mini floor console- Pwr accessory delay- Pwr windows w/front one-touch up & down
- Rear dome lamp- Rear folding bench seat- Rear underseat compartment storage
- Rearview day/night mirror- Sentry Key theft deterrent system - Speed control
- Tilt steering column

Exterior

- 17" x 7.5" steel styled wheels - Black fold-away pwr heated mirrors- Full size spare tire
- LT245/70R17E all-season BSW tires- 17" steel spare wheel- Automatic headlamps
- Black door handles- Black front bumper- Black grille- Black rear bumper
- Body color headlamp filler panel- Cargo lamp- Center hub- Fixed rear window
- Front air dam- Front bumper sight shields- Front license plate bracket
- Front wheel spats- Quad halogen headlamps- Rear wheel spats- Tinted glass windows
- Tinted windshield glass- Variable speed intermittent windshield wipers
- Vendor painted cargo box tracking- Winch-type tire carrier

Safety

- HD vinyl 40/20/40 split bench seat - Pwr locks- 12V pwr outlet
- 2nd row in-floor storage bins- 4-spoke steering wheel- Air conditioning
- Black instrument panel bezel- Black vinyl floor covering
- Driver/passenger assist handles- Front armrest w/cupholders
- Instrument cluster w/display screen -inc: vehicle info center, 120-MPH primary speedometer
- Mini floor console- Pwr accessory delay- Pwr windows w/front one-touch up & down
- Rear dome lamp- Rear folding bench seat- Rear underseat compartment storage
- Rearview day/night mirror- Sentry Key theft deterrent system - Speed control
- Tilt steering column

Mechanical

- 5.7L SMPi V8 Hemi engine w/variable valve timing
- 6-speed automatic transmission w/OD (REQ: EZC Engine) - Four-wheel drive
- Manual shift-on-the-fly transfer case- 10.5" rear axle ring gear diameter
- 160-amp alternator- 3.73 axle ratio (REQ: EZC Engine) - 5500# front axle
- 6'4" pickup box- 7-pin wiring harness- 730-amp maintenance-free battery
- 8800# GVWR- Class V receiver hitch- Front stabilizer bar- HD engine cooling
- HD front shock absorbers - HD rear shock absorbers - Pwr 4-wheel anti-lock disc brakes
- Pwr steering- Tip start- Trailer tow wiring w/4-pin connector- Transmission oil cooler

Option Packages

Factory Installed Packages

6.7L I6 CUMMINS TURBO DIESEL ENGINE

- inc: 11.50 rear axle, 180-amp alternator, diesel exhaust brake, 10000# GVWR, selective catalytic reduction (urea), tow hooks

\$7,795

6-SPEED MANUAL TRANSMISSION W/OD

- inc: 3.42 rear axle ratio

Option Packages Total

\$7,795

King of Cars and Trucks

King of Cars and Trucks

View this car on our website at njtruckking.com/6901327

Website: njtruckking.com

Phone: [856-693-3181](tel:856-693-3181)

Map: [1229 Broadway, Westville, New Jersey 08093](#)

