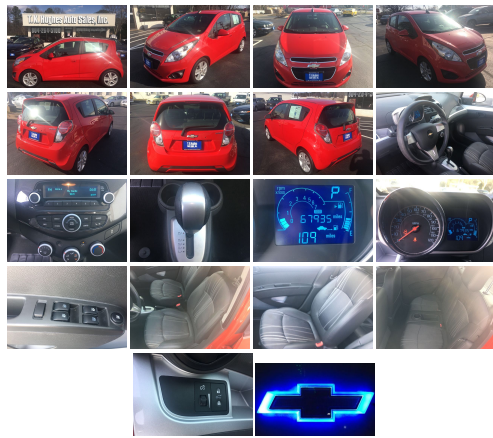


2015 Chevrolet Spark LS

View this car on our website at tkhughesauto.com/6901196/ebrochure



Our Price **\$7,700**

Specifications:

Year:	2015
VIN:	KL8CB6S99FC754603
Make:	Chevrolet
Stock:	5623
Model/Trim:	Spark LS
Condition:	Pre-Owned
Body:	Sedan
Exterior:	RED
Engine:	ENGINE, ECOTEC 1.2L DOHC 4-CYLINDER MFI
Interior:	BLACK Cloth
Mileage:	67,933
Drivetrain:	Front Wheel Drive
Economy:	City 30 / Highway 39

Great Miles, Excellent Condition, Free Carfax! TK Hughes Auto Sales, Inc in Business Since 1975! Better Business Bureau Rating AAA+!

TK Hughes Auto Sales, Inc
 8301 Brook Rd
 Richmond, VA 23227
 Since 1975!

2015 Chevrolet Spark LS

TK HUGHES - 804-264-5100 - View this car on our website at tkhughesauto.com/6901196/ebrochure

Vehicle History Report : as Of 05/13/2021

CARFAX
Snapshot

2015 CHEVROLET SPARK LS

- ✔ No accidents or damage reported to CARFAX
- 👤 2 Previous owners
- 🔧 22 Service history records
- 🏠 Personal vehicle
- 🌍 Last owned in Virginia
- 🚗 68,100 Last reported odometer reading

FREE CARFAX Report

See the full CARFAX Report for additional information

*carfax Snapshot is a reflection of available information on the date the report was pulled. carfax is constantly being updated with new information and is subject to change at any time.

Our Location :



2015 Chevrolet Spark LS

TK HUGHES - 804-264-5100 - View this car on our website at tkhughesauto.com/6901196/ebrochure

Installed Options

Interior

- Seats, front high-back bucket with adjustable head restraints - Trim, seat, cloth
- Seat adjuster, driver 4-way manual with manual recline
- Seat adjuster, passenger 2-way manual with manual recline
- Seat, rear, 60/40-split, flip-and-fold with adjustable outboard headrests
- Console, rear, center with storage tray- Floor covering, carpet with driver heel pad
- Driver foot rest, left side- Steering column, Tilt-Wheel
- Steering wheel, 3-spoke, Silver accents
- Instrumentation, analog with speedometer, tachometer and fuel gauge
- Driver Information Center with trip computer- Trip computer- Oil life monitoring system
- Windows, power, front and rear- Liftgate release, electronic, lock/unlock button
- Fuel filler door release, remote- Engine immobilizer, theft-deterrent system
- Air conditioning, single-zone manual- Cabin air filter- Defogger, rear-window- Glovebox
- Center stack trim, LS- Storage, front passenger IP tray- Storage, driver IP coin tray
- Storage, lower center IP bin- Cup holders, 2 front and 2 rear
- Bottle holder with door storage pocket on driver and front passenger doors
- Power outlet, auxiliary located in front center stack storage bin - Armrest, driver, folding
- Mirror, inside rearview manual day/night
- Visors, driver and front passenger with driver covered vanity mirror
- Assist handles, driver, front passenger and rear outboard
- Lighting, interior overhead courtesy lamp with OnStar controls
- Lighting, dimming instrument panel cluster- Lighting, rear cargo compartment lamp
- Map pocket, front passenger seatback
- Shopping bag hooks located on base of driver and front passenger head restraints
- Cargo security shelf, rear

Exterior

- Wheels, 15" (38.1 cm) 5-split spoke Silver-painted aluminum
- Tires, P185/55R15 all-season blackwall- Tire inflation kit
- Spoiler, rear with integrated LED center high-mounted stop/brake lamp (CHMSL)
- Grille, chrome-surround
- Headlamps, halogen with automatic exterior lamp control and Daytime Running Lamps
- Lamp, LED center high-mounted stop/brake (CHMSL)
- Mirrors, outside manual, body-color, manual-folding- Glass, solar absorbing
- Wipers, front intermittent, variable- Wiper, rear, continuous, with washer
- License plate bracket, front- Door handles, body-color

Safety

- Seats, front high-back bucket with adjustable head restraints - Trim, seat, cloth
- Seat adjuster, driver 4-way manual with manual recline
- Seat adjuster, passenger 2-way manual with manual recline
- Seat, rear, 60/40-split, flip-and-fold with adjustable outboard headrests
- Console, rear, center with storage tray- Floor covering, carpet with driver heel pad
- Driver foot rest, left side- Steering column, Tilt-Wheel
- Steering wheel, 3-spoke, Silver accents
- Instrumentation, analog with speedometer, tachometer and fuel gauge
- Driver Information Center with trip computer- Trip computer- Oil life monitoring system
- Windows, power, front and rear- Liftgate release, electronic, lock/unlock button
- Fuel filler door release, remote- Engine immobilizer, theft-deterrent system
- Air conditioning, single-zone manual- Cabin air filter- Defogger, rear-window- Glovebox
- Center stack trim, LS- Storage, front passenger IP tray- Storage, driver IP coin tray
- Storage, lower center IP bin- Cup holders, 2 front and 2 rear
- Bottle holder with door storage pocket on driver and front passenger doors
- Power outlet, auxiliary located in front center stack storage bin - Armrest, driver, folding
- Mirror, inside rearview manual day/night
- Visors, driver and front passenger with driver covered vanity mirror
- Assist handles, driver, front passenger and rear outboard
- Lighting, interior overhead courtesy lamp with OnStar controls
- Lighting, dimming instrument panel cluster- Lighting, rear cargo compartment lamp
- Map pocket, front passenger seatback
- Shopping bag hooks located on base of driver and front passenger head restraints
- Cargo security shelf, rear

Mechanical

- Engine, ECOTEC 1.2L DOHC 4-cylinder MFI (84 hp [62.6 kW] @ 6400 rpm, 83 lb-ft of torque [112.1 N-m] @ 4200 rpm)
- Transmission, Continuous Variable (CVT)- Axle, 3.75 final drive ratio- Front wheel drive
- Battery, 375 cold-cranking amps- Battery rundown protection- Alternator, 100 amps
- Suspension, front, MacPherson struts- Suspension, rear, compound crank
- Steering, power, electric- Brakes, 4-wheel antilock, front disc/rear drum

Option Packages

Factory Installed Packages

ENGINE, ECOTEC 1.2L DOHC 4-CYLINDER MFI
(84 hp [62.6 kW] @ 6400 rpm, 83 lb-ft of torque [112.1 N-m] @ 4200 rpm)

