

2021 Chevrolet Silverado 1500 RST

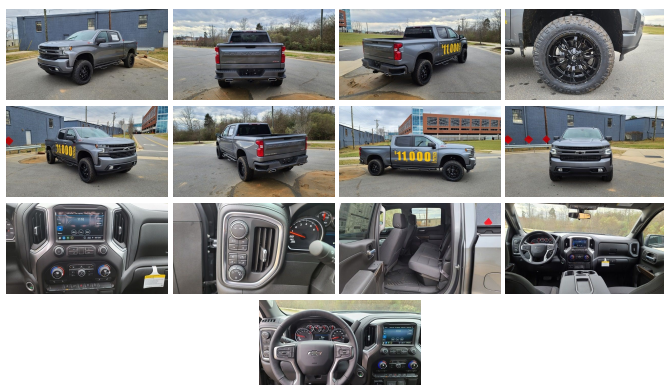
View this car on our website at parksdeals.com/6900516/ebrochure



Our Price **\$51,999**

Specifications:

Year:	2021
VIN:	3GCUYEED2MG185608
Make:	Chevrolet
Stock:	185608X
Model/Trim:	Silverado 1500 RST
Condition:	New
Body:	Pickup Truck
Exterior:	Satin Steel Metallic
Engine:	ENGINE, 5.3L ECOTEC3 V8
Interior:	Black Cloth
Mileage:	0
Drivetrain:	4 Wheel Drive
Economy:	City 16 / Highway 22



2021 Chevrolet Silverado 1500 RST Satin Steel Metallic EcoTec3 5.3L V8 4WD 8-Speed Automatic

Upfit includes: 4" Performance Suspension System, 20" Black Alloy Wheels, 33" Nitto Tires, Black Side Step Nerf Bars.

8-Speed Automatic, 4WD, Black Cloth, 10-Way Power Driver Seat w/Lumbar, 12-Volt Rear Auxiliary Power Outlet, 2 USB Ports (First Row), 4.2" Diagonal Color Display Driver Info Center, 4G LTE Wi-Fi Hot Spot Capable, 6-Speaker Audio System, All-Star Edition, All-Weather Floor Liner (LPO) (AAK), Apple CarPlay/Android Auto, Auto-Locking Rear Differential, Bed Protection Package, Bluetooth?? For Phone, Body Color Grille, Chevrolet Connected Access Capable, Chevytec Spray-On Black Bedliner, Cloth Rear Seat w/Storage Package, Color-Keyed Carpeting Floor Covering, Convenience Package, Deep-Tinted Glass, Dual Exhaust w/Polished Outlets, Dual-Zone Automatic Climate Control, Electric Rear-Window Defogger, Electrical Lock Control Steering Column, Electronic Cruise Control, EZ Lift Power Lock & Release Tailgate, Front Frame-Mounted Black Recovery Hooks, Front LED Fog Lamps, Front Rubberized Vinyl Floor Mats, Heated Driver & Front Outboard Passenger Seats, Heated Steering Wheel, Heavy-Duty Air Filter, High Gloss Black Mirror Caps, Hill Descent Control, Hitch Guidance, Keyless Open & Start, Leather Wrapped Steering Wheel, LED Cargo Area Lighting, Manual Tilt/Telescoping Steering Column, Off-Road Suspension, OnStar & Chevrolet Connected Services Capable, Power Door Locks, Power Front Windows w/Driver Express Up/Down, Power Front Windows w/Passenger Express Down, Power Rear Windows w/Express Down, Preferred Equipment Group 1SP, Rear 60/40 Folding Bench Seat (Folds Up), Rear Dual USB Charging-Only Ports, Rear Rubberized-Vinyl Floor Mats, Rear Vision Camera, Rear Wheelhouse Liners, Remote Vehicle Starter System, SiriusXM

Radio, Standard Tailgate, Steering Wheel Audio Controls, Theft Deterrent System (Unauthorized Entry), Trailing Package, Z71 Off-Road & Protection Package, Z71 Off-Road Package.

Contact us online at www.parkscharlotte.com or give us a call at (704) 288-0662 to have your questions answered, obtain a price quote for this vehicle, or schedule your test drive today. Our prices cannot be beat! Come visit us at 8530 IKEA BLVD CHARLOTTE NC.

\$2000 - Dealer Trade-in Allowance (Must own and trade a 2014 or newer passenger vehicle to qualify for the Dealer Trade-in Allowance), Allowance is \$2000 above True Car Cash Offer. This offer is based on the current condition of the vehicle and must be appraised at the Dealership to receive the Trade-In Allowance. \$2000 is reflected in the vehicle discount. \$1000 - Dealer Finance Discount (Must qualify and finance with GM Financial, not available with special financing rates or programs.) Must Call, Text or email to reserve your VIP appointment. \$500.00 VIP Appointment Offer good toward the purchase or lease of any New Chevrolet. You may or may not qualify for all rebates. Price does not include tax, tag, and fees. Price does not include any aftermarket products, bodies, or upfits. Price includes applicable rebates: \$4250 Customer Cash - Not available with special financing, lease and some other offers. Take delivery by 03/01/21. See dealer for details.

2021 Chevrolet Silverado 1500 RST

Parks Chevrolet, Inc. - 833-825-2763 - View this car on our website at parksdeals.com/6900516/ebrochure

Our Location :



2021 Chevrolet Silverado 1500 RST

Parks Chevrolet, Inc. - 833-825-2763 - View this car on our website at parksdeals.com/6900516/ebrochure

Installed Options

Interior

- Seats, front 40/20/40 split-bench with covered armrest storage and under-seat storage

- Seats, front 40/20/40 split-bench with covered armrest storage and under-seat storage (lockable) (Not available with (PCH) Convenience Package with Bucket Seats.)
- Seat trim, Cloth- Seat adjuster, driver 10-way power including lumbar
- Seat adjuster, passenger 4-way manual
- Seating, heated driver and front outboard passenger
- Seat, rear 60/40 folding bench (folds up), 3-passenger (includes child seat top tether anchor)
- Seat, Cloth Rear with Storage Package 60/40 folding bench for Crew Cab models, includes seatback storage on left and right side, center fold out armrest with 2 cupholders, (includes child seat top tether anchor)
- Floor covering, color-keyed carpeting
- Floor mats, rubberized vinyl, front (Deleted when (BKF) Floor liners or LPO floor liners are ordered.)
- Floor mats, rubberized-vinyl rear (Deleted when (BKF) Floor liners or LPO floor liners are ordered.)
- Steering wheel, leather-wrapped- Steering wheel, heated- Steering wheel audio controls
- Steering column, manual tilt and telescoping- Steering column, lock control, electrical
- Instrument cluster, 6-gauge cluster featuring speedometer, fuel level, engine temperature, tachometer, voltage and oil pressure
- Driver Information Center, 4.2" diagonal color display includes driver personalization
- Exterior Temperature Display located in radio display
- Compass located in instrument cluster- Rear Seat Reminder
- Window, power front, drivers express up/down
- Window, power front, passenger express down- Windows, power rear, express down
- Door locks, power- Remote vehicle starter system- Keyless Open and Start
- Cruise control, electronic with set and resume speed, steering wheel-mounted
- Theft-deterrent system, unauthorized entry- Power outlet, front auxiliary, 12-volt
- USB ports, 2 (first row) located on instrument panel- Power outlet, rear auxiliary, 12-volt
- USB ports, dual, charge-only (2nd row)
- Air conditioning, dual-zone automatic climate control- Air vents, rear, heating/cooling
- Defogger, rear-window electric- Mirror, inside rearview, manual tilt
- Assist handles front A-pillar mounted for driver and passenger, rear B-pillar mounted
- Chevrolet Connected Access capable (Subject to terms. See onstar.com or dealer for details.)

Exterior

- Wheels, 18" x 8.5" (45.7 cm x 21.6 cm) Bright Silver painted aluminum
- Tires, 265/65R18SL all-season, blackwall- Tire, spare 265/70R17SL all-season, blackwall
- Wheel, 17" x 8" (43.2 cm x 20.3 cm) full-size, steel spare
- Tire carrier lock, keyed cylinder lock that utilizes same key as ignition and door
- Bumper, front (Body-color)- Bumper, rear (Body-color)- CornerStep, rear bumper
- Recovery hooks, front, frame-mounted, Black
- Cargo tie downs (12), fixed rated at 500 lbs per corner
- Grille (Body color bars with high gloss Black mesh inserts.) - Black Bowtie, (front grille)
- Headlamps, LED reflector with LED signature Daytime Running Lamps
- Fog lamps, front, LED
- Lamps, cargo area, cab mounted integrated with center high mount stop lamp, with switch in bank on left side of steering wheel
- LED Cargo Area Lighting located in pickup bed, activated with switch on center switch bank or key fob
- Taillamps, LED with signature
- Mirrors, outside heated power-adjustable (When (PQB) Safety Package is ordered, includes Perimeter Lighting.)
- Mirror caps, painted (High gloss Black. Not available with (DPO) trailering mirrors.)
- Glass, deep-tinted- Door handles, body-color- Tailgate and bed rail protection cap, top
- Tailgate, standard
- Tailgate, gate function manual with EZ Lift includes power lock and release

Safety

- Seats, front 40/20/40 split-bench with covered armrest storage and under-seat storage (lockable) (Not available with (PCH) Convenience Package with Bucket Seats.)
- Seat trim, Cloth- Seat adjuster, driver 10-way power including lumbar
- Seat adjuster, passenger 4-way manual
- Seating, heated driver and front outboard passenger
- Seat, rear 60/40 folding bench (folds up), 3-passenger (includes child seat top tether anchor)
- Seat, Cloth Rear with Storage Package 60/40 folding bench for Crew Cab models, includes seatback storage on left and right side, center fold out armrest with 2 cupholders, (includes child seat top tether anchor)
- Floor covering, color-keyed carpeting
- Floor mats, rubberized vinyl, front (Deleted when (BKF) Floor liners or LPO floor liners are ordered.)
- Floor mats, rubberized-vinyl rear (Deleted when (BKF) Floor liners or LPO floor liners are ordered.)

Steering wheel, leather-wrapped- Steering wheel, heated- Steering wheel audio controls

- Steering wheel, leather-wrapped- Steering wheel, heated- Steering wheel audio controls
- Steering column, manual tilt and telescoping- Steering column, lock control, electrical
- Instrument cluster, 6-gauge cluster featuring speedometer, fuel level, engine temperature, tachometer, voltage and oil pressure
- Driver Information Center, 4.2" diagonal color display includes driver personalization
- Exterior Temperature Display located in radio display
- Compass located in instrument cluster- Rear Seat Reminder
- Window, power front, drivers express up/down
- Window, power front, passenger express down- Windows, power rear, express down
- Door locks, power- Remote vehicle starter system- Keyless Open and Start
- Cruise control, electronic with set and resume speed, steering wheel-mounted
- Theft-deterrent system, unauthorized entry- Power outlet, front auxiliary, 12-volt
- USB ports, 2 (first row) located on instrument panel- Power outlet, rear auxiliary, 12-volt
- USB ports, dual, charge-only (2nd row)
- Air conditioning, dual-zone automatic climate control- Air vents, rear, heating/cooling
- Defogger, rear-window electric- Mirror, inside rearview, manual tilt
- Assist handles front A-pillar mounted for driver and passenger, rear B-pillar mounted
- Chevrolet Connected Access capable (Subject to terms. See onstar.com or dealer for details.)

Mechanical

- Engine, 2.7L Turbo (310 hp [231 kW] @ 5600 rpm, 348 lb-ft of torque [471 Nm] @ 1500 rpm) (Not available with (Z71) Z71 Off-Road Package.)
- Transmission, 8-speed automatic, electronically controlled with overdrive and tow/haul mode. Includes Cruise Grade Braking and Powertrain Grade Braking (Included and only available with (L3B) 2.7L Turbo engine or (L84) 5.3L EcoTec3 V8 engine.)
- Rear axle, 3.42 ratio (Included with (L84) 5.3L EcoTec3 V8 engine or (L87) 6.2L EcoTec3 V8 engine and (NHT) Max Trailering Package.)
- Durabed, pickup bed
- GVWR, 7000 lbs. (3175 kg) (Requires Crew Cab or Double Cab 4WD model and (L3B) 2.7L Turbo engine.)
- Automatic Stop/Start
- Transfer case, single speed electronic Autotrac with push button control (4WD models only)
- Auto-locking rear differential- Four wheel drive
- Battery, heavy-duty 730 cold-cranking amps/80 Amp-hr, maintenance-free with rundown protection and retained accessory power (Included and only available with (L3B) 2.7L Turbo engine, (L84) 5.3L EcoTec3 V8 engine or (L87) 6.2L EcoTec3 V8 engine.)
- Alternator, 220 amps (Included and only available with (L3B) 2.7L Turbo engine, (LM2) Duramax 3.0L Turbo-Diesel I6 engine or (NHT) Max Trailering Package.)
- Frame, fully-boxed, hydroformed front section
- Steering, Electric Power Steering (EPS) assist, rack-and-pinion
- Brakes, 4-wheel antilock, 4-wheel disc with DURALIFE rotors- Brake lining wear indicator
- Capless Fuel Fill- Exhaust, single outlet

Option Packages

Factory Installed Packages

ENGINE, 5.3L ECOTEC3 V8 (355 hp [265 kW] @ 5600 rpm, 383 lb-ft of torque [518 Nm] @ 4100 rpm); featuring all-new Dynamic Fuel Management that enables the engine to operate in 17 different patterns between 2 and 8 cylinders, depending on demand, to optimize power delivery and efficiency	\$1,395
---	---------

Option Packages Total
\$1,395

615 NC-66 South
Kernersville, NC 27284

© 2021 AutoRevo - All rights reserved. - Powered by AutoRevo