

## 2018 Chevrolet Express Explorer Limited SE ROOF,NAV,REAR DVD,HTD LTH,15K

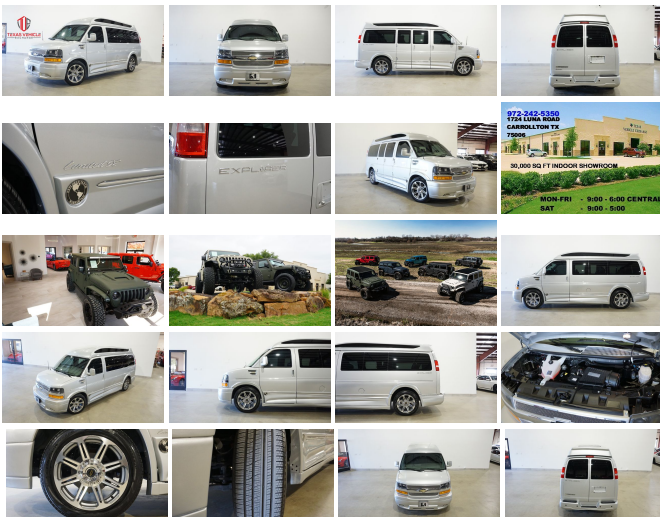
View this car on our website at [tveauto.com/6900382/ebrochure](http://tveauto.com/6900382/ebrochure)



Our Price **\$49,900**

### Specifications:

<b>Year:</b>	2018
<b>VIN:</b>	1GCWGAFG1J1336896
<b>Make:</b>	Chevrolet
<b>Stock:</b>	336896
<b>Model/Trim:</b>	Express Explorer Limited SE ROOF,NAV,REAR DVD,HTD LTH,15K
<b>Condition:</b>	Pre-Owned
<b>Body:</b>	Minivan/Van
<b>Exterior:</b>	Silver Ice Metallic
<b>Engine:</b>	ENGINE, VORTEC 6.0L V8 SFI FLEXFUEL
<b>Interior:</b>	Gray Leather
<b>Transmission:</b>	TRANSMISSION, 6-SPEED AUTOMATIC, HEAVY-DUTY, ELECTRONICALLY CONTROLLED
<b>Mileage:</b>	15,118
<b>Drivetrain:</b>	Rear Wheel Drive



NATION WIDE FINANCING

SUBMIT CREDIT APP [WWW.TVEAUTO.COM](http://WWW.TVEAUTO.COM)

OR CALL 972-242-5350

2018 CHEVROLET EXPRESS EXPLORER LIMITED SE VAN, 6.0L V8 FLEX FUEL ENGINE, AUTOMATIC TRANSMISSION, ONLY 15K, SILVER ICE METALLIC W/GRAY LEATHER INTERIOR, CARFAX REPORTS 1 OWNER NO ACCIDENTS, APPEARS TO BE A NON-SMOKER, REMOTE START, FOGLIGHTS, VISTA CRUISER SPORT ROOF WITH REAR POWER SUNROOF, NAVIGATION, BACK-UP CAMERA, REAR DVD ENTERTAINMENT INCLUDING 29" GAMING LED TV & GAMING DVD

SAMSUNG LED TV & SAMSUNG DVD PLAYER WITH 4 WIRELESS HEADPHONES & 2 REMOTE CONTROLS, POWER WINDOWS, POWER DOOR LOCKS, POWER MIRRORS, BLIND SPOT CONTROL, TILT STEERING WHEEL WITH AUDIO & CRUISE CONTROLS, DUAL POWER & HEATED FRONT BUCKET SEATS, TRACTION CONTROL, ICE COLD A/C, AM/FM/XM STEREO WITH CD PLAYER, BLUETOOTH, ONSTAR, DUAL LIGHTED VANITY MIRRORS, REAR A/C CONTROL & VENTS, PASSENGER SIDE 60/40 CARGO DOOR, SECOND ROW BUCKETS WITH MANUAL ADJUSTMENTS, OVERHEAD READING LIGHTS, INDIRECT LIGHTING, MANUAL SUNSHADES FOR WINDOWS & DOORS, POWER FOLDING SOFA, REAR CARGO DOORS, REAR PARK DISTANCE SENSORS, TOW PACKAGE WITH RECEIVER HITCH, FLOOR MATS, OWNER'S MANUAL, 1 KEY/1 REMOTE. 20 IN ALUMINUM WHEELS, FRONT TIRES ARE PIRELLI 265/50R/20 WITH APPROX 95% TREAD LIFE REMAINING, REAR TIRES ARE PIRELLI 265/50R/20 WITH APPROX 95% TREAD LIFE REMAINING. RUNS AND DRIVES GREAT. GIVE US A CALL @ 972-242-5350 OR STOP BY FOR A TEST DRIVE. 1724 LUNA RD IN CARROLLTON - 2 MILES NORTH OF 635. CLICK ON CARFAX ICON TO VIEW A FULL REPORT AT NO COST TO YOU.

---

2018 Chevrolet Express Explorer Limited SE ROOF,NAV,REAR DVD,HTD LTH,15K

Texas Vehicle Exchange - 972-242-5350 - View this car on our website at [tveauto.com/6900382/ebrochure](http://tveauto.com/6900382/ebrochure)

## Our Location :



2018 Chevrolet Express Explorer Limited SE ROOF,NAV,REAR DVD,HTD LTH,15K  
Texas Vehicle Exchange - 972-242-5350 - View this car on our website at [veauto.com/6900382/ebrochure](http://veauto.com/6900382/ebrochure)

## Installed Options

### Interior

- Air conditioning, single-zone manual (Not available with (R6G) air conditioning delete.)
- Assist handles, driver and right-front passenger
- Cargo tie-downs 6 D-ring attachments on cargo area floor (Not available with (Y3H) Paratransit Package, (5BV) Upfitter electrical provisions or (ZP6) 5-passenger Express Crew Van.)
- Console, engine cover with open storage bin
- Cup holders, 3 on the engine console cover - Defogger, side windows
- Door locks, power with lock-out protection (Included with (ZQ2) Power Convenience Package. NOTE: Does not include (ATG) Remote Keyless Entry. (ATG) Remote Keyless Entry must be ordered separately.)
- Driver Information Center includes fuel range, average speed, oil life, tire pressure monitoring, fuel used, ice warning, engine hours, average fuel economy, tachometer, and maintenance reminders. Compass and outside temperature available if equipped.
- Floor covering, full-length Black rubberized-vinyl (Not available with (RFM) rear floor covering delete, (5BV) Upfitter electrical or (PCH) Hotel Shuttle Package.)
- Headliner, cloth, over driver and passenger
- Instrumentation, analog with speedometer, odometer with trip odometer, fuel level, voltmeter, engine temperature and oil pressure
- Lighting, interior with 4 dome lights 1 overhead and 3 LED's on cross members in cargo area, includes defeat switch and door handle-activated switches
- Mirror, inside rearview includes Rear Vision Camera display - Oil life monitor
- Power outlet, 120-volt
- Power outlets, 2 auxiliary on engine console cover with covers, 12-volt
- Seating arrangement, driver and front passenger high-back buckets with head restraints and vinyl or cloth trim (Not available with (AJ3) driver-side only frontal air bag.)
- Seats, front bucket with vinyl trim and outboard head restraints, includes inboard armrests. (Requires (\*\*W) interior trim. Includes (DAA) driver and front passenger vinyl visors.)
- Steering wheel, steel sleeve column with theft-deterrent locking feature, Black
- Theft-deterrent system, vehicle, PASS-Key III
- Tow/haul mode selector, instrument panel-mounted
- Trim panels, hinged rear side doors and hinged rear doors (Not available with (Y3H)

Paratransit Package or (5BV) Upfitter electrical provisions.)

- Visors, driver and front passenger, cloth, padded
- Warning tones, headlamp on and key-in-ignition
- Windows, power (Included with (ZQ2) Power Convenience Package.)

---

## Exterior

- Bumpers, front and rear painted Black with step-pad
- Door, swing-out passenger-side, 60/40 split - Glass, Solar-Ray light-tinted, all windows
- Headlamps, dual halogen composite- Mirrors, outside manual, Black
- Tire, spare LT245/75R16E all-season, blackwall located at rear underbody of vehicle
- Tires, front LT245/75R16E all-season, blackwall
- Tires, rear LT245/75R16E all-season, blackwall
- Wheels, 4 - 16" x 6.5" (40.6 cm x 16.5 cm) steel includes Gray center caps and steel spare
- Wipers, front intermittent wet-arm with pulse washers

---

## Safety

- Air conditioning, single-zone manual (Not available with (R6G) air conditioning delete.)
- Assist handles, driver and right-front passenger
- Cargo tie-downs 6 D-ring attachments on cargo area floor (Not available with (Y3H) Paratransit Package, (5BV) Upfitter electrical provisions or (ZP6) 5-passenger Express Crew Van.)
- Console, engine cover with open storage bin
- Cup holders, 3 on the engine console cover - Defogger, side windows
- Door locks, power with lock-out protection (Included with (ZQ2) Power Convenience Package. NOTE: Does not include (ATG) Remote Keyless Entry. (ATG) Remote Keyless Entry must be ordered separately.)
- Driver Information Center includes fuel range, average speed, oil life, tire pressure monitoring, fuel used, ice warning, engine hours, average fuel economy, tachometer, and maintenance reminders. Compass and outside temperature available if equipped.
- Floor covering, full-length Black rubberized-vinyl (Not available with (RFM) rear floor covering delete, (5BV) Upfitter electrical or (PCH) Hotel Shuttle Package.)
- Headliner, cloth, over driver and passenger
- Instrumentation, analog with speedometer, odometer with trip odometer, fuel level, voltmeter, engine temperature and oil pressure
- Lighting, interior with 4 dome lights 1 overhead and 3 LED's on cross members in cargo area, includes defeat switch and door handle-activated switches
- Mirror, inside rearview includes Rear Vision Camera display - Oil life monitor
- Power outlet, 120-volt
- Power outlets, 2 auxiliary on engine console cover with covers, 12-volt
- Seating arrangement, driver and front passenger high-back buckets with head restraints and vinyl or cloth trim (Not available with (AJ3) driver-side only frontal air bag.)
- Seats, front bucket with vinyl trim and outboard head restraints, includes inboard armrests. (Requires (\*\*W) interior trim. Includes (DAA) driver and front passenger vinyl visors.)
- Steering wheel, steel sleeve column with theft-deterrent locking feature, Black
- Theft-deterrent system, vehicle, PASS-Key III
- Tow/haul mode selector, instrument panel-mounted
- Trim panels, hinged rear side doors and hinged rear doors (Not available with (Y3H) Paratransit Package or (5BV) Upfitter electrical provisions.)
- Visors, driver and front passenger, cloth, padded
- Warning tones, headlamp on and key-in-ignition
- Windows, power (Included with (ZQ2) Power Convenience Package.)

---

## Mechanical

- Alternator, 105 amps (Not available with (Y3H) Paratransit Package, (C69) rear air conditioning, (9L7) Wiring junction block equipment accessory, (5BV) Upfitter electrical provisions or (LWN) 2.8L Duramax Turbo-Diesel engine.)
- Battery, 600 cold-cranking amps, maintenance-free with rundown protection and retained accessory power
- Body, standard- Brakes, 4-wheel antilock, 4-wheel disc
- Cooling, external engine oil cooler (Not available with (LWN) 2.8L Duamax Turbo-Diesel engine.)
- Engine, 4.3L V6 with Direct Injection and Variable Valve Timing, includes aluminum block construction (276 hp [206 kW] @ 5200 rpm, 298 lb-ft of torque [404 Nm] @ 3900 rpm) (Reference the Engine/Axle page for availability.)
- Exhaust, aluminized stainless-steel muffler and tailpipe - Frame, full-length box ladder-type
- Fuel tank capacity, mid-frame and approximately 31 gallons (117.3L)
- GVWR, 8600 lbs. (3901 kg) (Reference the Engine/Axle page for availability.)
- Rear axle, 3.42 ratio (Reference the Engine/Axle page for availability.) - Rear wheel drive
- Steering, power- Suspension, front independent with coil springs and stabilizer bar
- Suspension, rear hypoid drive axle with multi-leaf springs
- Transmission oil cooler, external (Not available with (LWN) 2.8L Duramax Turbo-Diesel engine.)
- Transmission, 8-speed automatic, electronically controlled with overdrive and tow/haul mode, includes Cruise Grade Braking and Powertrain Grade Braking (Requires (LV1) 4.3L V6 SIDI engine or (LWN) 2.8L Duramax Turbo-Diesel engine.)

## Option Packages

### Factory Installed Packages

ENGINE, VORTEC 6.0L V8 SFI FLEXFUEL  
(341 hp [254.3 kW] @ 5400 rpm, 373 lb-ft of torque [503.6 N-m] @ 4200 rpm) \$995

TRANSMISSION, 6-SPEED AUTOMATIC, HEAVY-DUTY, ELECTRONICALLY CONTROLLED  
with overdrive and tow/haul mode. Includes Cruise Grade Braking, Powertrain Grade Braking, and Tap-Up/Tap-Down Driver Shift Control

REAR PARK ASSIST \$295

REMOTE VEHICLE STARTER SYSTEM \$300

SIDE BLIND ZONE ALERT \$395

AUDIO SYSTEM, CHEVROLET MYLINK RADIO WITH NAVIGATION, 6.5" DIAGONAL COLOR TOUCH-SCREEN DISPLAY, AM/FM STEREO WITH CD PLAYER  
includes Bluetooth streaming audio for music and select phones; Hands-Free smartphone integration with Pandora and Stitcher; voice-activated technology for radio and phone (NOTE: Rear vision camera image is displayed on rearview mirror) \$1,025

Option Packages Total \$3,010

Texas Vehicle Exchange

[tveauto.com](http://tveauto.com)

972-242-5350

1724 Luna Road

Carrollton, TX 75006

© 2021 AutoRevo - All rights reserved. - Powered by AutoRevo