

2016 Land Rover Discovery Sport HSE AWD PANO ROOF,NAV,HTD LTH,40K

View this car on our website at tveauto.com/6898980/ebrochure



Our Price **\$24,900**

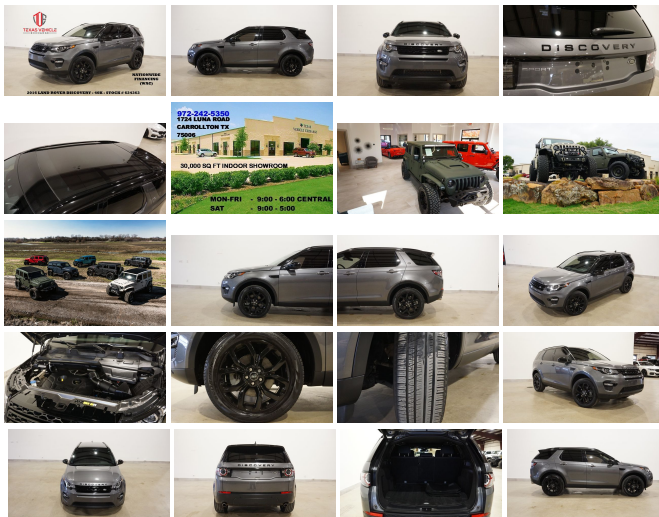
Specifications:

Year:	2016
VIN:	SALCR2BG2GH624363
Make:	Land Rover
Stock:	624363
Model/Trim:	Discovery Sport HSE AWD PANO ROOF,NAV,HTD LTH,40K
Condition:	Pre-Owned
Body:	SUV
Exterior:	Corris Gray Metallic
Engine:	Engine: 2.0L I4 Turbocharged
Interior:	Ebony/Ebony Leather
Mileage:	40,295
Drivetrain:	All Wheel Drive
Economy:	City 20 / Highway 26

NATION WIDE FINANCING

SUBMIT CREDIT APP WWW.TVEAUTO.COM

OR CALL 972-242-5350



2016 LAND ROVER DISCOVERY SPORT HSE AWD, 2.0L TURBOCHARGED I4 ENGINE, AUTOMATIC TRANSMISSION, ONLY 40K, CORRIS GRAY METALLIC W/BLACK LEATHER INTERIOR, CARFAX REPORTS 2 OWNERS NO ACCIDENTS, APPEARS TO BE A NON-SMOKER, PUSH BUTTON START, FOGLIGHTS, FRONT & REAR PARK DISTANCE SENSORS, FIXED PANORAMIC SUNROOF, NAVIGATION, BACK-UP CAMERA, POWER WINDOWS, POWER DOOR LOCKS, POWER FOLDING HEATED MIRRORS WITH TURN SIGNALS, TILT/TELESCOPE STEERING WHEEL WITH

TILT/TELESCOPE STEERING WHEEL WITH AUDIO & CRUISE CONTROLS, PADDLE SHIFTERS, DUAL POWER & HEATED FRONT SEATS WITH 3 MEMORY POSITION, LANE DEPARTURE WARNING, DSC CONTROL, HILL DESCENT CONTROL, ECO BUTTON, ICE COLD A/C, DUAL CLIMATE CONTROL, HD AM/FM/SIRIUS STEREO, BLUETOOTH, SELF DIMMING REAR VIEW MIRROR, HOMELINK GARAGE CONTROLS, DUAL LIGHTED VANITY MIRRORS, POWER LIFTGATE, RUBBER CARGO MAT, RUBBER FLOOR MATS, NO OWNER'S MANUAL, 2 KEYS/2 REMOTES. 19" BLACK ALLOY WHEELS, FRONT TIRES ARE PIRELLI 235/55R/19 WITH APPROX 70% TREAD LIFE REMAINING, REAR TIRES ARE PIRELLI 235/55R/19 WITH APPROX 70% TREAD LIFE REMAINING. RUNS AND DRIVES GREAT. GIVE US A CALL @ 972-242-5350 OR STOP BY FOR A TEST DRIVE. 1724 LUNA RD IN CARROLLTON - 2 MILES NORTH OF 635. CLICK ON CARFAX ICON TO VIEW A FULL REPORT AT NO COST TO YOU.

2016 Land Rover Discovery Sport HSE AWD PANO ROOF,NAV,HTD LTH,40K

Texas Vehicle Exchange - 972-242-5350 - View this car on our website at tveauto.com/6898980/ebrochure

Our Location :



2016 Land Rover Discovery Sport HSE AWD PANO ROOF,NAV,HTD LTH,40K

Texas Vehicle Exchange - 972-242-5350 - View this car on our website at veauto.com/6898980/ebrochure

Installed Options

Interior

- 10-Way Power Front Seats w/Memory -inc: center console w/sliding armrest
- 2 Seatback Storage Pockets- 4 12V DC Power Outlets
- 60-40 Folding Split-Bench Front Facing Manual Reclining Flip Forward Cushion/Seatback Rear Seat w/Manual Fore/Aft
- Air Filtration- Aluminum Gear Shifter Material- Cargo Space Lights- Carpet Floor Trim
- Cruise Control w/Steering Wheel Controls- Day-Night Auto-Dimming Rearview Mirror
- Delayed Accessory Power- Digital/Analog Display- Door Mirrors
- Driver And Passenger Visor Vanity Mirrors w/Driver And Passenger Illumination
- Driver Foot Rest- Driver Seat- Dual Zone Front Automatic Air Conditioning
- Engine Immobilizer- FOB Controls -inc: Cargo Access and Windows
- Fade-To-Off Interior Lighting- Front And Rear Map Lights- Front Cupholder
- Full Carpet Floor Covering- Full Cloth Headliner
- Full Floor Console w/Covered Storage and 4 12V DC Power Outlets
- Gauges -inc: Speedometer, Odometer, Engine Coolant Temp, Tachometer, Trip Odometer and Trip Computer
- Grained Leather Seat Trim- HVAC -inc: Underseat Ducts and Headliner/Pillar Ducts
- HomeLink Garage Door Transmitter- Illuminated Glove Box
- Instrument Panel Bin, Driver / Passenger And Rear Door Bins and 1st Row Underseat Storage
- Interior Trim -inc: Aluminum Instrument Panel Insert, Aluminum Console Insert, Metal-Look Interior Accents and Leatherette Upholstered Dashboard
- Leather Steering Wheel- Leatherette Door Trim Insert
- Manual Adjustable Front Head Restraints and Manual Adjustable Rear Head Restraints
- Manual Tilt/Telescoping Steering Column- Outside Temp Gauge- Passenger Seat
- Perimeter Alarm- Power 1st Row Windows w/Driver And Passenger 1-Touch Up/Down
- Power Door Locks w/Autolock Feature
- Power Rear Windows and Fixed 3rd Row Windows
- Proximity Key For Doors And Push Button Start - Rear Center Armrest w/Storage
- Rear Cupholder- Redundant Digital Speedometer

- Remote Keyless Entry w/Integrated Key Transmitter, Illuminated Entry and Panic Button
- Remote Releases -Inc: Power Cargo Access- Roll-Up Cargo Cover
- Smart Device Integration- Systems Monitor- Trip Computer- Trunk/Hatch Auto-Latch
- Valet Function

Exterior

- Black Bodyside Cladding and Black Wheel Well Trim- Black Side Windows Trim
- Body-Colored Door Handles
- Body-Colored Front Bumper w/Metal-Look Rub Strip/Fascia Accent and Black Bumper Insert
- Body-Colored Power w/Tilt Down Heated Side Mirrors w/Power Folding and Turn Signal Indicator
- Body-Colored Rear Bumper w/Metal-Look Rub Strip/Fascia Accent and Black Bumper Insert
- Clearcoat Paint- Compact Spare Tire Mounted Inside Under Cargo- Deep Tinted Glass
- Fixed Glass 1st And 2nd Row Sunroof w/Power Sunshade
- Fixed Rear Window w/Fixed Interval Wiper and Defroster- Front And Rear Fog Lamps
- Fully Automatic Projector Beam High Intensity Low/High Beam Daytime Running Auto-Leveling Headlamps w/Washer and Delay-Off
- Fully Galvanized Steel Panels- LED Brakelights- Lip Spoiler- Metal-Look Grille
- Perimeter/Approach Lights- Power Liftgate Rear Cargo Access
- Speed Sensitive Rain Detecting Variable Intermittent Wipers- Steel Spare Wheel
- Tailgate/Rear Door Lock Included w/Power Door Locks- Tires: 18"
- Wheels: 18" 5 Split Spoke Sparkle Silver -inc: Style 511

Safety

- 10-Way Power Front Seats w/Memory -inc: center console w/sliding armrest
- 2 Seatback Storage Pockets- 4 12V DC Power Outlets
- 60-40 Folding Split-Bench Front Facing Manual Reclining Flip Forward Cushion/Seatback Rear Seat w/Manual Fore/Aft
- Air Filtration- Aluminum Gear Shifter Material- Cargo Space Lights- Carpet Floor Trim
- Cruise Control w/Steering Wheel Controls- Day-Night Auto-Dimming Rearview Mirror
- Delayed Accessory Power- Digital/Analog Display- Door Mirrors
- Driver And Passenger Visor Vanity Mirrors w/Driver And Passenger Illumination
- Driver Foot Rest- Driver Seat- Dual Zone Front Automatic Air Conditioning
- Engine Immobilizer- FOB Controls -inc: Cargo Access and Windows
- Fade-To-Off Interior Lighting- Front And Rear Map Lights- Front Cupholder
- Full Carpet Floor Covering- Full Cloth Headliner
- Full Floor Console w/Covered Storage and 4 12V DC Power Outlets
- Gauges -inc: Speedometer, Odometer, Engine Coolant Temp, Tachometer, Trip Odometer and Trip Computer
- Grained Leather Seat Trim- HVAC -inc: Underseat Ducts and Headliner/Pillar Ducts
- HomeLink Garage Door Transmitter- Illuminated Glove Box
- Instrument Panel Bin, Driver / Passenger And Rear Door Bins and 1st Row Underseat Storage
- Interior Trim -inc: Aluminum Instrument Panel Insert, Aluminum Console Insert, Metal-Look Interior Accents and Leatherette Upholstered Dashboard
- Leather Steering Wheel- Leatherette Door Trim Insert
- Manual Adjustable Front Head Restraints and Manual Adjustable Rear Head Restraints
- Manual Tilt/Telescoping Steering Column- Outside Temp Gauge- Passenger Seat
- Perimeter Alarm- Power 1st Row Windows w/Driver And Passenger 1-Touch Up/Down
- Power Door Locks w/Autolock Feature
- Power Rear Windows and Fixed 3rd Row Windows
- Proximity Key For Doors And Push Button Start - Rear Center Armrest w/Storage
- Rear Cupholder- Redundant Digital Speedometer
- Remote Keyless Entry w/Integrated Key Transmitter, Illuminated Entry and Panic Button
- Remote Releases -Inc: Power Cargo Access- Roll-Up Cargo Cover
- Smart Device Integration- Systems Monitor- Trip Computer- Trunk/Hatch Auto-Latch
- Valet Function

Mechanical

- 18.5 Gal. Fuel Tank- 3.75 Axle Ratio
- 4-Wheel Disc Brakes w/4-Wheel ABS, Front Vented Discs, Brake Assist, Hill Descent Control, Hill Hold Control and Electric Parking Brake
- 80-Amp/Hr Maintenance-Free Battery- Automatic Full-Time Four-Wheel Drive
- Electric Power-Assist Speed-Sensing Steering- Engine Auto Stop-Start Feature
- Engine: 2.0L I4 Turbocharged- Front And Rear Anti-Roll Bars- GVWR: 5,520 lbs
- Gas-Pressurized Shock Absorbers- Permanent Locking Hubs
- Quasi-Dual Stainless Steel Exhaust w/Chrome Tailpipe Finisher
- Strut Front Suspension w/Coil Springs- Strut Rear Suspension w/Coil Springs
- Transmission w/Driver Selectable Mode
- Transmission: 9-Speed Automatic w/Paddle Shifters

Option Packages

Factory Installed Packages

19" BLACK DESIGN PACKAGE

-inc: Santorini Black Contrast
Roof, Gloss Black, front and
rear badging, side mirrors and
side vents, Wheels: 19" 5 Split
Spoke w/Gloss Black Finish
Alloy style 521, Tires: 19"

\$1,400

DRIVER ASSIST PLUS PACKAGE

-inc: autonomous emergency
braking, Traffic Sign
Recognition, SD Card
Navigation, Lane Departure
Warning

\$1,295

Option Packages Total

\$2,695

Texas Vehicle Exchange

tveauto.com

972-242-5350

1724 Luna Road

Carrollton, TX 75006

© 2021 AutoRevo - All rights reserved. - Powered by AutoRevo