



## 2017 GMC Sierra 1500

**Our Price \$34,995**

View this vehicle on our website at [autodepotcalexico.com](http://autodepotcalexico.com)

Auto Depot of Calexico

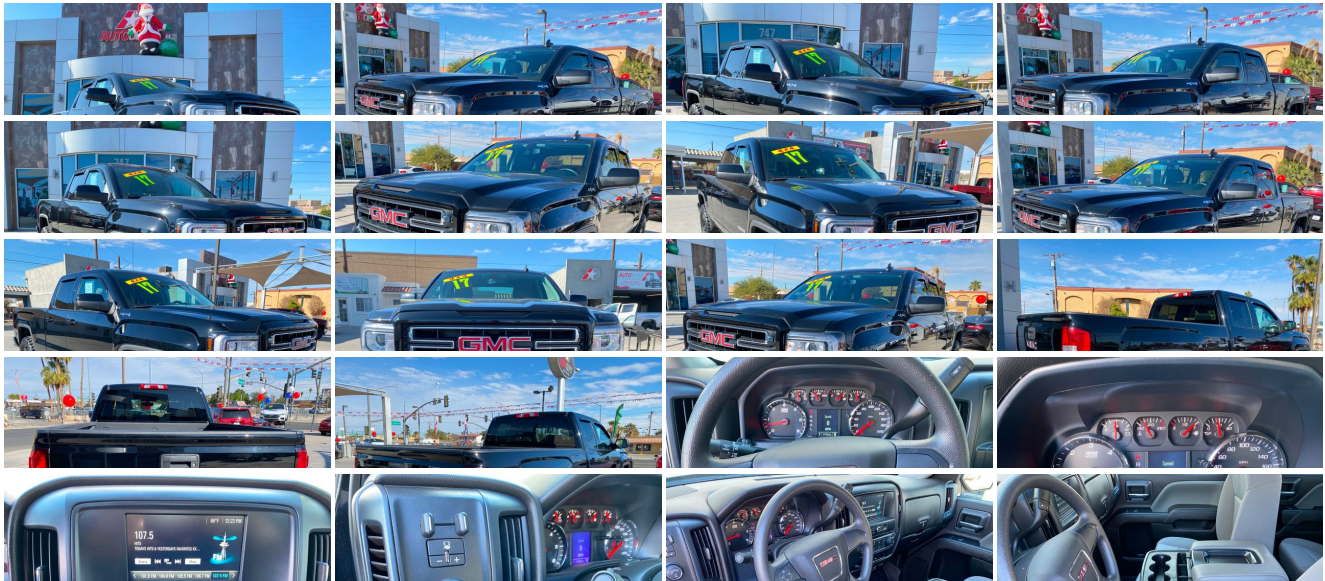
760-357-0043

747 Imperial Ave , Calexico, CA 92231

Photos

Details

Contact



## Specifications:

<b>Year:</b>	2017
<b>VIN:</b>	<a href="#">1GTV2LEC3HZ331389</a>
<b>Make:</b>	GMC
<b>Stock:</b>	5926
<b>Model/Trim:</b>	Sierra 1500
<b>Condition:</b>	Pre-Owned
<b>Body:</b>	Pickup Truck
<b>Exterior:</b>	Onyx Black
<b>Engine:</b>	ENGINE, 5.3L ECOTEC3 V8, WITH ACTIVE FUEL MANAGEMENT, DIRECT INJECTION
<b>Interior:</b>	Dark Ash seats with Jet Black interior accents Cloth
<b>Mileage:</b>	36,562
<b>Drivetrain:</b>	4 Wheel Drive
<b>Economy:</b>	City 16 / Highway 22

## Vehicle Description

### Installed Options

#### Interior

- Door locks, power
- Seats, front 40/20/40 split-bench 3-passenger, driver and front passenger recline with outboard head restraints and center fold-down armrest with storage. Vinyl has fixed lumbar and cloth has manually adjustable driver lumbar.
- Air conditioning, single-zone- Assist handle, front passenger on A-pillar
- Cruise control, steering wheel-mounted
- Driver Information Center, 3.5-inch diagonal monochromatic display provides warning messages and basic vehicle information
- Floor covering, Graphite-colored rubberized-vinyl
- Instrumentation, 6-gauge cluster featuring speedometer, fuel level, engine temperature, tachometer, voltage and oil pressure
- OnStar Delete
- Seat, rear full-width folding bench, 3-passenger (includes child seat top tether anchor) (Requires a Double Cab model.)
- Steering column, manual Tilt-Wheel
- Windows, power with driver express up and down and express down on all other windows (Standard on Crew Cab and Double Cab models. On Regular Cab included and only available with (PDD) Sierra Convenience Package.) (Standard on Crew Cab and Double Cab. On Regular Cab. Included and only available with (PCR) Sierra Fleet Convenience Package.)

#### Exterior

- Tire, spare P255/70R17 all-season, blackwall (Included and only available with (RBZ) P255/70R17 all-season, blackwall tires.)
- Tires, P255/70R17 all-season, blackwall
- Wheels, 17" x 8" (43.2 cm x 20.3 cm) painted steel
- 4X4 chrome badge (Included and only available with 4X4 models.)
- Active aero shutters, front- Bumper, front chrome lower
- Bumper, rear chrome with rear bumper corner steps - CornerStep, rear bumper
- Door handles, Black- Glass, solar absorbing, tinted
- Grille surround, chrome (Not included when (SXL) Elevation Edition is ordered.)
- Headlamps, high intensity discharge (HID) projector-beam with LED signature
- Lamps, cargo area, cab mounted with switch on center switch bank
- Mirrors, outside manual, Black- Tailgate and bed rail protection caps, top
- Tailgate, locking utilizes same key as ignition and door
- Tire carrier lock keyed cylinder lock that utilizes same key as ignition and door

#### Safety

- Door locks, power
- Seats, front 40/20/40 split-bench 3-passenger, driver and front passenger recline with outboard head restraints and center fold-down armrest with storage. Vinyl has fixed

### Option Packages

#### Factory Installed Packages

---

ENGINE, 5.3L ECOTEC3 V8, WITH ACTIVE FUEL MANAGEMENT, DIRECT INJECTION and Variable Valve Timing, includes aluminum block construction (355 hp [265 kW] @ 5600 rpm, 383 lb-ft of torque [518 Nm] @ 4100 rpm; more than 300 lb-ft of torque from 2000 to 5600 rpm)	\$1,195
---	---------

---

ONYX BLACK

---

SOLID PAINT

---

AUDIO SYSTEM, 4.2" DIAGONAL COLOR DISPLAY, AM/FM STEREO  
with USB port and auxiliary jack

---

Option Packages Total

\$1,195

- lumbar and cloth has manually adjustable driver lumbar.
- Air conditioning, single-zone- Assist handle, front passenger on A-pillar
- Cruise control, steering wheel-mounted
- Driver Information Center, 3.5-inch diagonal monochromatic display provides warning messages and basic vehicle information
- Floor covering, Graphite-colored rubberized-vinyl
- Instrumentation, 6-gauge cluster featuring speedometer, fuel level, engine temperature, tachometer, voltage and oil pressure
- OnStar Delete
- Seat, rear full-width folding bench, 3-passenger (includes child seat top tether anchor) (Requires a Double Cab model.)
- Steering column, manual Tilt-Wheel
- Windows, power with driver express up and down and express down on all other windows (Standard on Crew Cab and Double Cab models. On Regular Cab included and only available with (PDD) Sierra Convenience Package.) (Standard on Crew Cab and Double Cab. On Regular Cab. Included and only available with (PCR) Sierra Fleet Convenience Package.)

---

## Mechanical

- Engine, 4.3L EcoTec3 V6 with Active Fuel Management Direct Injection and Variable Valve Timing, includes aluminum block construction with FlexFuel capability, capable of running on unleaded or up to 85% ethanol (285 hp [212 kW] @ 5300 rpm, 305 lb-ft of torque [413 Nm] @ 3900 rpm) (Includes (FHS) E85 FlexFuel capability. Not available on T\*15743 models.)
- Recovery hooks, front, frame-mounted, black (Included with (SXL) Elevation Edition on 2WD models. Standard with 4WD models. Included with (9G3) Suspension Package, off-road, for base decor vehicles with 4WD models) (Included with 4WD models or (SXL) Elevation Edition on 2WD models.)
- Transmission, 6-speed automatic, electronically controlled with overdrive and tow/haul mode. Includes Cruise Grade Braking and Powertrain Grade Braking
- Alternator, 150 amps
- Battery, heavy-duty 730 cold-cranking amps/70 Amp-hr, maintenance-free with rundown protection and retained accessory power
- Brakes, 4-wheel disc with DURALIFE rotors, 4-wheel antilock- Capless Fuel Fill
- Cargo tie downs (4), movable upper- Cooling, external engine oil cooler
- Exhaust, aluminized stainless-steel muffler and tailpipe- Four wheel drive
- Frame, fully-boxed, hydroformed front section
- GVWR, 7100 lbs. (3221 kg) (Requires a Crew Cab or Double Cab 4WD model and (LV3) 4.3L EcoTec3 V6 engine.)
- Pickup box (Deleted when (ZW9) pickup box delete is ordered on Regular Cab models.)
- Rear axle, 3.42 ratio (Standard on 4WD V6 models. Available with (L83) 5.3L EcoTec3 V8 engine.)
- Steering, Electric Power Steering (EPS) assist, rack-and-pinion- Suspension Package
- Transfer case, with floor-mounted shifter (Included with 4WD models only.)

Auto Depot of Calexico

Auto Depot of Calexico

View this car on our website at [autodepotcalexico.com/6896267](http://autodepotcalexico.com/6896267)

Website: [autodepotcalexico.com](http://autodepotcalexico.com)

Phone: [760-357-0043](tel:760-357-0043)

Map: [747 Imperial Ave, Calexico, CA 92231](#)

