

pmautoco.com
530-343-5565
1545 Park Ave
Chico, CA
95928

Putnam Mulholland Auto Company,
Inc.

2013 Ford F-150 XLT 4WD

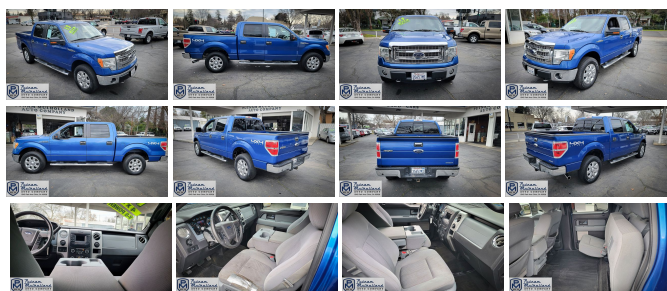
View this car on our website at pmautoco.com/6893724/ebrochure



Our Price **\$12,995**

Specifications:

Year: 2013
VIN: 1FTFW1EF4DKE24108
Make: Ford
Stock: 4992
Model/Trim: F-150 XLT 4WD
Condition: Pre-Owned
Body: Pickup Truck
Exterior: Blue
Engine: 5.0L V8 FFV ENGINE
Interior: Gray Cloth
Mileage: 279,114
Drivetrain: 4 Wheel Drive
Economy: City 14 / Highway 19



2013 Ford F-150 XLT 4WD

Putnam Mulholland Auto Company, Inc. - 530-343-5565 - View this car on our website at pmautoco.com/6893724/ebrochure

Our Location :



2013 Ford F-150 XLT 4WD
Putnam Mulholland Auto Company, Inc. - 530-343-5565 - View this car on our website at pmauto.com/6893724/ebrochure

Installed Options

Interior

- Cloth 40/20/40 split bench front seat w/manual driver lumbar
- Color-coordinated carpet -inc: carpeted front/rear floor mats
- Driver side SecuriCode keyless entry keypad- Front pwr point
- Pwr door locks w/autolock feature- Rear pwr point- Remote keyless entry key
- 2nd row B-pillar grab handles
- 60/40 flip-up rear split bench seat -inc: elongated seat cushions
- Black urethane steering wheel- Chrome ring w/obsidian vanes air conditioning registers
- Compass- Cruise control- Customer info display- Delayed accessory pwr
- Deployable cupholder under center portion of seat
- Display center -inc: warning messages & text functions - Dome light
- Driver & front passenger door scuff plates
- Driver & passenger covered visor vanity mirrors - Fade-to-off interior lighting
- Front passenger side A-pillar grab handle
- Gauges -inc: fuel gauge, voltmeter, oil pressure, engine coolant temp, speedometer, tachometer, odometer
- Illuminated entry- Manual air conditioning- Outside temp gauge- Overhead console
- Perimeter alarm- Pwr 1st & 2nd row windows
- SecuriLock passive anti-theft system (PATS)- Tilt steering column

Exterior

- 17" machined aluminum wheels w/painted accents- Black pwr side mirrors
- Full size spare tire- P265/70R17 all-terrain OWL tires- (4) full-size doors
- Autolamp -inc: automatic on/off headlamps - Black door & tailgate handles
- Black front/rear stone cuffs- Body-color front bumper fascia
- Cargo lamp integrated w/high mount stop light- Chrome front/rear step bumper
- Chrome grille surround w/chrome "two-bar style" insert - Fixed rear window- Fog lamps
- Rear privacy tint glass- Removable tailgate w/key lock & lift assist
- Under frame winch-type spare tire carrier w/safety catch & lock - Variable interval wipers

Safety

- Cloth 40/20/40 split bench front seat w/manual driver lumbar
- Color-coordinated carpet -inc: carpeted front/rear floor mats
- Driver side SecuriCode keyless entry keypad- Front pwr point
- Pwr door locks w/autolock feature- Rear pwr point- Remote keyless entry key
- 2nd row B-pillar grab handles
- 60/40 flip-up rear split bench seat -inc: elongated seat cushions
- Black urethane steering wheel- Chrome ring w/obsidian vanes air conditioning registers
- Compass- Cruise control- Customer info display- Delayed accessory pwr
- Deployable cupholder under center portion of seat
- Display center -inc: warning messages & text functions - Dome light
- Driver & front passenger door scuff plates
- Driver & passenger covered visor vanity mirrors - Fade-to-off interior lighting
- Front passenger side A-pillar grab handle
- Gauges -inc: fuel gauge, voltmeter, oil pressure, engine coolant temp, speedometer, tachometer, odometer
- Illuminated entry- Manual air conditioning- Outside temp gauge- Overhead console
- Perimeter alarm- Pwr 1st & 2nd row windows
- SecuriLock passive anti-theft system (PATS)- Tilt steering column

Mechanical

- 6-speed electronic automatic transmission w/OD & tow/haul mode- Front tow hooks
- (4) pickup box tie-down hooks- 2-ton jack- 3.55 axle ratio (REQ: 99F or 996 Engine)
- 4-wheel drive -inc: electronic-shift-on-the fly transfer case (ESOF)- 5.0L V8 FFV engine
- 6.5' pickup box- 7350# GVWR, 1570# maximum payload
- 78-amp/hr (750CCA) maintenance-free battery- Easy Fuel capless fuel filler system
- Gas shock absorbers- Leaf spring rear suspension w/2-stage variable rear springs
- Long-spindle double wishbone front suspension w/coil-over-shock IFS
- Neutral towing capability- Pwr front/rear disc brakes- Pwr rack & pinion steering
- Trailer sway control

Option Packages

Factory Installed Packages

5.0L V8 FFV ENGINE

Putnam Mulholland Auto Company, Inc.

pmautoco.com

530-343-5565

1545 Park Ave

Chico, CA 95928

© 2024 AutoRevo - All rights reserved. - Powered by AutoRevo