



2007 Nissan 350Z Touring

Website Price \$15,995

View this vehicle on our website at autoparkdallas.com



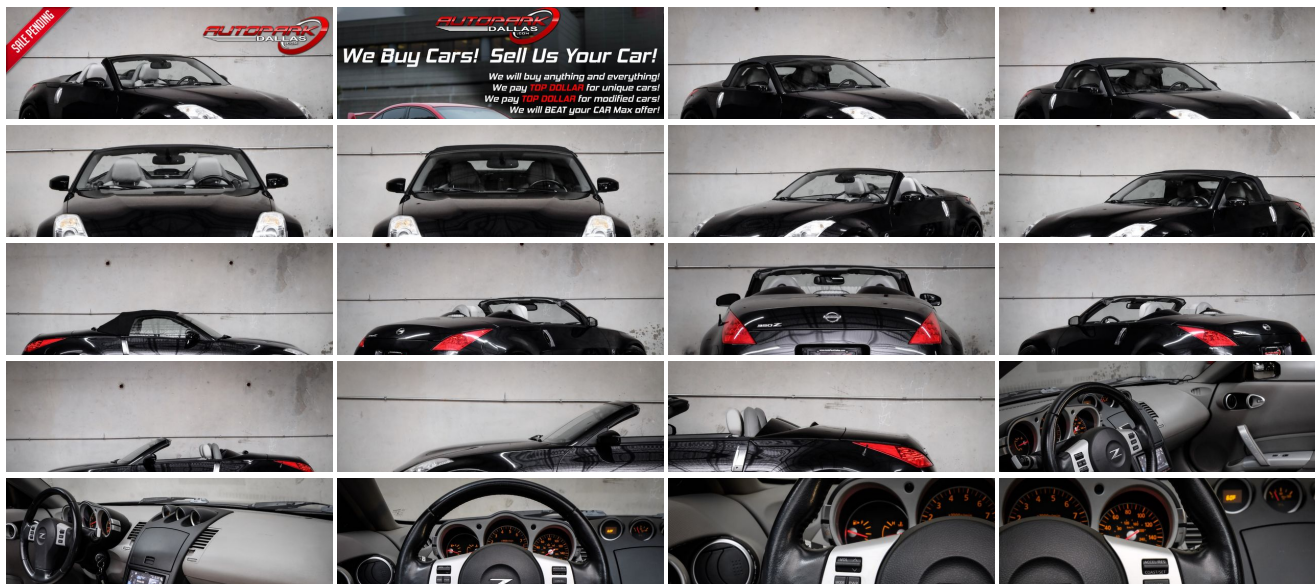
(214) 945-2601

2061 S Stemmons Fwy , Lewisville, TX 75067

Photos

Details

Contact



Specifications:

Year:	2007
VIN:	JN1BZ36A17M653510
Make:	Nissan
Model/Trim:	350Z Touring
Condition:	Pre-Owned
Body:	Convertible
Exterior:	Magnetic Black Pearl
Engine:	3.5L DOHC V6 engine
Interior:	Frost Leather
Transmission:	6-speed close-ratio manual transmission
Mileage:	43,666
Drivetrain:	Rear Wheel Drive
Economy:	City 19 / Highway 26

Vehicle Description

AutoPark Dallas is thrilled to offer you this Soft-Top Convertible in Midnight Black Pearl 2007 Nissan 350Z Touring for sale! We stopped for a second and thought of a checklist for the ideal sports car: two seats, lightweight body, rear-wheel drive, big wheels and tires, and curves for days. Everything fits perfectly with what we, AutoPark Dallas, claim is our bread-n-butter and proudly sell: the Nissan Z. Our 350Z goes back to its heydays with a hunkered down cockpit, knife-edged looks, and is considered the Fifth generation of Z(s) that pushes corners like nothing with stock 287 horsepower! The best thing about this 350z Touring is the ability to drop the top and enjoy the beautiful day while you cruise the streets! If you love the Z or just want a fun eye-catching sports car, come check out our Nissan 350Z sitting in our indoor 16,000 Sq Ft Showroom located in Addison, TX amongst our inventory of 100+ other unique and luxury vehicles!

2007 Nissan 350Z Touring

*** Clean CarFax !***

*** 2 Sets of Keys !***

Magnetic Black Pearl Exterior

Black Cloth Soft-Top Convertible

Frost "White" Leather Interior

*** 18" American Racing (Style: APEX) Wheels !***

*** Pioneer Stereo Unit w/ Navigation !***

Heated Driver & Passenger Seat

HomeLink Garage Opener

Single-Zone Air Conditioning

Powered Convertible Top

Cruise Control

Steering Wheel Mounted Controls

3.5L DOHC SMPI 24-Valve V6 Engine

6-Speed Manual Transmission

Rear Wheel Drive

Professionally Detailed!

Well Maintained!

*** Free CarFax Report !***

AND SO MUCH MORE!!!

Financing is available!

Check out our Payment Calculator to get an estimate on your monthly payments!

OR

Get pre-approved in no time by filling out a credit application on the 'Finance' section of our website!

We also offer MANY different Extended Warranty options!

Check out our Google Reviews by *Clicking* this LINK!

Referrals and Testimonials is what our business is built on!

The team here at AutoPark Dallas, is dedicated to offering a level of customer service not usually found in the automobile industry. Thanks to years of extensive car buying / selling experience, we pursue quality used and new vehicles that are hand-picked from factory sources. Our love for automobiles and dislike of traditional dealership tactics is what motivates us to provide the service we do! The pride we take in continuing this service long after the vehicle has been delivered is what we strive for! Looking forward to making every effort to see that our customer is completely satisfied and a friend for life!

Pre-purchase inspections are always welcomed!

We also offer airport pick-up, competitive financing options, free CarFax Reports, Car Shipping nationwide, Extended Warranty plans, and so much more!

Trade-In(s) are always accepted or sell us your used car (MODIFIED OR NOT)! Please call or text for more information about Trade-Ins or selling your car to us @ (214) 945-2601!

#(214) 945-2601

Call or Text **Anytime!**

Se habla Español

WE BUY CARS!

WWW.AUTOPARKDALLAS.COM

Installed Options

Interior

- (2) rear parcel boxes- (5) beverage holders
- 3-bay instrument gauge cluster w/oil pressure, voltmeter & trip computer
- 4-way manual adjustable passenger seat w/seatback fall-down function
- 4-way pwr seats w/4-way manual adjustable driver seat - Aluminum interior accents
- Aluminum pedals- Automatic temp control
- Bose AM/FM audio system w/in-dash 6-disc CD changer-inc: (7) speakers, subwoofer
- Dual illuminated visor vanity mirrors- Leather heated bucket seats
- Leather-wrapped shift knob
- Leather-wrapped tilt steering wheel w/illuminated audio/cruise controls
- Lockable storage behind passenger seat- Nissan vehicle immobilizer system
- Passenger storage net- Pwr locks- Pwr storage cover
- Pwr windows w/1-touch auto up/down, auto-reverse- Rear window defroster
- Remote keyless entry system w/rolling code protection, remote front window down & trunk/hatch release
- Tire pressure monitoring system- Vehicle security system

Exterior

- Aluminum hood- Body color pwr heated mirrors
- Electric soft top-inc: pwr tonneau cover, center lever type w/3-point front lock, glass rear window
- Flush mounted bi-xenon high intensity discharge headlights - LED taillights
- Rear wind deflector- Rear wiper- Variable intermittent front wipers

Safety

- (2) rear parcel boxes- (5) beverage holders
- 3-bay instrument gauge cluster w/oil pressure, voltmeter & trip computer
- 4-way manual adjustable passenger seat w/seatback fall-down function
- 4-way pwr seats w/4-way manual adjustable driver seat - Aluminum interior accents
- Aluminum pedals- Automatic temp control
- Bose AM/FM audio system w/in-dash 6-disc CD changer-inc: (7) speakers, subwoofer
- Dual illuminated visor vanity mirrors- Leather heated bucket seats
- Leather-wrapped shift knob
- Leather-wrapped tilt steering wheel w/illuminated audio/cruise controls
- Lockable storage behind passenger seat- Nissan vehicle immobilizer system
- Passenger storage net- Pwr locks- Pwr storage cover
- Pwr windows w/1-touch auto up/down, auto-reverse- Rear window defroster
- Remote keyless entry system w/rolling code protection, remote front window down & trunk/hatch release
- Tire pressure monitoring system- Vehicle security system

Mechanical

- 18" 5-spoke aluminum alloy wheels- 3.5L DOHC V6 engine
- 4-wheel anti-lock braking system w/brake assist- 4-wheel vented disc brakes
- 6-speed close-ratio manual transmission- Carbon-fiber composite driveshaft
- Continuously variable valve timing control system- Drive-by-wire throttle
- Dual chrome-tipped exhaust- Electronic brake force distribution- Front strut tower bar
- Front/rear stabilizer bars- Independent multi-link front & rear suspension
- Nissan direct ignition system- P225/45WR18 high performance front tires
- P245/45WR18 high performance rear tires- Rear strut tower brace- Rear wheel drive
- Speed-sensitive pwr rack & pinion steering

Option Packages

Factory Installed Packages

[C03] 50 STATE EMISSIONS

STANDARD PAINT

[L92] CARPETED FLOOR MATS

\$95

[M95] PAINTED SPLASH GUARDS (4 PIECE)

\$140

[T95] CARPETED TRUNK MAT

\$70

Option Packages Total

\$305



Auto Park Dallas

View this car on our website at autoparkdallas.com/6892923

Website: autoparkdallas.com

Phone: (214) 945-2601

Map: 2061 S Stemmons Fwy, Lewisville, TX 75067

