

2020 Chevrolet Corvette Convertible 3LT

View this car on our website at carbuffs.com/6892554/ebrochure



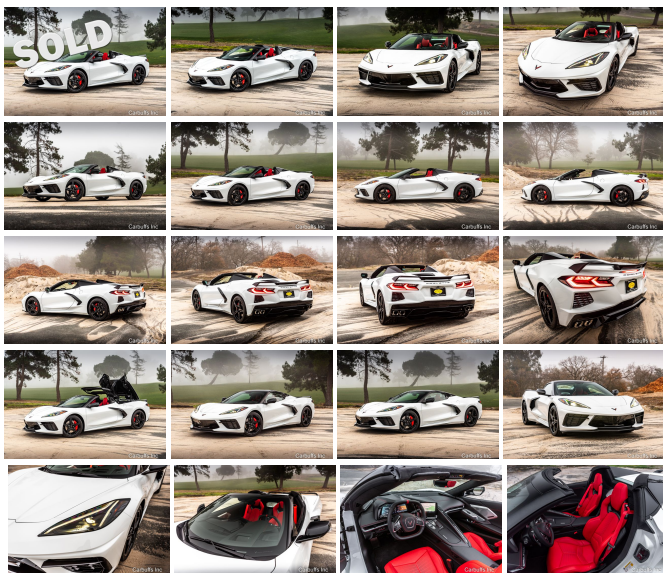
Our Price **\$0**

Specifications:

Year:	2020
VIN:	1G1Y83D45L5114781
Make:	Chevrolet
Model/Trim:	Corvette Convertible 3LT
Condition:	Pre-Owned
Body:	Convertible
Exterior:	Arctic White
Engine:	ENGINE, 6.2L V8 DI, HIGH-OUTPUT
Interior:	Adrenaline Red Leather
Transmission:	TRANSMISSION, 8-SPEED DUAL CLUTCH, INCLUDES MANUAL AND AUTO MODES
Mileage:	195
Drivetrain:	Rear Wheel Drive
Economy:	City 15 / Highway 27

Rare convertible with a rare color combination! Arctic white exterior with adrenaline red leather interior with red accent stitching. Smooth and powerful 6.2L V8 with 8 speed transmission with auto/manual modes. 3LT package. Z51 Performance package. Magnetic ride control. Red brake calipers. Front lift adjustable height. Only 195 miles.

2020 was a short production run due to a strike and the pandemic. This Corvette is one of only 3,581 worldwide delivery convertibles made. Of those only 522 were arctic white and when you combine that with the red interior this is a very rare car.



2020 Chevrolet Corvette Convertible 3LT

Carbuffs - (925) 671-2010 - View this car on our website at carbuffs.com/6892554/ebrochure

Our Location :



2020 Chevrolet Corvette Convertible 3LT
Carbuffs - (925) 671-2010 - View this car on our website at carbuffs.com/6892554/ebrochure

Installed Options

Interior

- Air conditioning, dual-zone automatic climate control individual climate settings for driver and passenger, with outside temperature display
- Air filtration system with pollen filter- Cargo nets, 2
- Chevrolet Connected Access (Subject to terms. See onstar.com or dealer for details.)
- Console, floor 2 covered cup holders, auxiliary power outlet, USB ports, auxiliary input jack and lockable storage
- Cruise control, electronic with set and resume speed
- Custom Leather Wrapped Interior Package features leather-wrapped upper instrument panel, door trim panels and console
- Defogger, rear-window, electric- Door locks, power programmable with lockout protection
- Floor mats, carpeted
- Gauge cluster, 12" diagonal color with driver information display with multiple selectable modes and gauge configurations
- Head-Up Display color display with 3 modes: tour, sport, track; can display speed, gear, tach, shift lights, turn signals, bright headlamps, turn-by-turn navigation, g-meter, speed limit, lap times
- Keyless Open and Start includes 2 remote transmitters that enable automatic door unlock and open by touching door switch
- Lighting, interior, theater dimming
- Memory Driver and Passenger Convenience Package includes steering wheel and outside mirrors plus seat memory for both driver and passenger; key fob or door button activated
- Napa leather seating surfaces with perforated inserts- Oil life monitoring system
- Rear Camera Mirror inside rearview auto-dimming with full camera display
- Remote vehicle starter system- Seat adjuster, driver 8-way power
- Seat adjuster, driver power bolster- Seat adjuster, passenger 8-way power
- Seat adjuster, passenger power bolster- Seat adjuster, power driver lumbar control
- Seat adjuster, power passenger lumbar control
- Seat belt color, Black ((HZN/HUF) Natural Dipped interior comes with (3N9) Tan seat belt color; (HTO) Tension/Twilight Blue interior comes with (3A9) Tension Blue seat belt color.)
- Seats, GT2 bucket- Seats, heated and vented driver and passenger

Option Packages

Factory Installed Packages

ENGINE, 6.2L V8 DI, HIGH-OUTPUT	
Variable Valve Timing (VVT), Active Fuel Management (AFM) (490 hp [365.4 kW] @ 6450 rpm, 465 lb-ft of torque [627.8 N-m] @ 5150 rpm)	
TRANSMISSION, 8-SPEED DUAL CLUTCH, INCLUDES MANUAL AND AUTO MODES	
ADRENALINE RED CUSTOM LEATHER STITCH	
includes seats, instrument panel, doors and console	\$395
BRAKES, Z51 PERFORMANCE	
larger brake rotors with Z51 logo on calipers; 13.6" (345 mm) front and 13.8" (350 mm) rear	
CALIPERS, BRIGHT RED-PAINTED	\$595
CARBON FLASH METALLIC-PAINTED OUTSIDE MIRRORS	
includes (DRG) Carbon Flash Metallic-painted outside mirrors	\$100
CONVERTIBLE TOP, CARBON FLASH-PAINTED NACELLES AND ROOF	
	\$1,295

- Steering column, power tilt and telescopic
- Steering wheel controls, audio, voice recognition, cruise and Driver Information Center
- Steering wheel, heated- Steering wheel, leather-wrapped
- Sueded Microfiber-Wrapped Upper Interior Trim Package includes headliner, visors, trim above windshield and rear window, and A-pillar trim
- Theft deterrent sensor, vehicle inclination
- Theft deterrent sensor, vehicle interior movement
- Theft-deterrent system, electrical, unauthorized entry, activates the horn
- Theft-deterrent system, vehicle, push button start, immobilizer and audible visual alarm
- Trunk release, push button open
- Universal Home Remote includes garage door opener, 3-channel programmable, located on driver visor
- Vehicle health management provides advanced warning of vehicle issues
- Visors, driver and passenger illuminated vanity mirrors, covered
- Windows, power with driver and passenger Express-Down/Up
- Wireless Charging for devices

Exterior

- Carbon Flash Exterior Badge Package
- Convertible top, retractable, power-folding hard top painted body-color roof, remote control (down only), includes power glass rear window with integral defogger
- Exterior accents, Carbon Flash, side vents and front/rear grille accents (Also includes tonneau grille.)
- Glass, Solar-Ray light-tinted- Headlamps, LED
- Mirrors, outside heated, power-adjustable, power-folding driver-side auto-dimming with turn signal indicators
- Tires, 245/35ZR19 front and 305/30ZR20 rear, blackwall, all-season, performance
- Wheels, 19" x 8.5" (48.3 cm x 21.6 cm) front and 20" x 11" (50.8 cm x 27.9 cm) rear 5-open-spoke Bright Silver-painted aluminum
- Wipers, front intermittent

Safety

- Air conditioning, dual-zone automatic climate control individual climate settings for driver and passenger, with outside temperature display
- Air filtration system with pollen filter- Cargo nets, 2
- Chevrolet Connected Access (Subject to terms. See onstar.com or dealer for details.)
- Console, floor 2 covered cup holders, auxiliary power outlet, USB ports, auxiliary input jack and lockable storage
- Cruise control, electronic with set and resume speed
- Custom Leather Wrapped Interior Package features leather-wrapped upper instrument panel, door trim panels and console
- Defogger, rear-window, electric- Door locks, power programmable with lockout protection
- Floor mats, carpeted
- Gauge cluster, 12" diagonal color with driver information display with multiple selectable modes and gauge configurations
- Head-Up Display color display with 3 modes: tour, sport, track; can display speed, gear, tach, shift lights, turn signals, bright headlamps, turn-by-turn navigation, g-meter, speed limit, lap times
- Keyless Open and Start includes 2 remote transmitters that enable automatic door unlock and open by touching door switch
- Lighting, interior, theater dimming
- Memory Driver and Passenger Convenience Package includes steering wheel and outside mirrors plus seat memory for both driver and passenger; key fob or door button activated
- Napa leather seating surfaces with perforated inserts- Oil life monitoring system
- Rear Camera Mirror inside rearview auto-dimming with full camera display
- Remote vehicle starter system- Seat adjuster, driver 8-way power
- Seat adjuster, driver power bolster- Seat adjuster, passenger 8-way power
- Seat adjuster, passenger power bolster- Seat adjuster, power driver lumbar control
- Seat adjuster, power passenger lumbar control
- Seat belt color, Black ((HZN/HUF) Natural Dipped interior comes with (3N9) Tan seat belt color; (HTO) Tension/Twilight Blue interior comes with (3A9) Tension Blue seat belt color.)
- Seats, GT2 bucket- Seats, heated and vented driver and passenger
- Steering column, power tilt and telescopic
- Steering wheel controls, audio, voice recognition, cruise and Driver Information Center
- Steering wheel, heated- Steering wheel, leather-wrapped
- Sueded Microfiber-Wrapped Upper Interior Trim Package includes headliner, visors, trim above windshield and rear window, and A-pillar trim
- Theft deterrent sensor, vehicle inclination
- Theft deterrent sensor, vehicle interior movement
- Theft-deterrent system, electrical, unauthorized entry, activates the horn
- Theft-deterrent system, vehicle, push button start, immobilizer and audible visual alarm
- Trunk release, push button open
- Universal Home Remote includes garage door opener, 3-channel programmable, located on driver visor

FRONT LIFT ADJUSTABLE HEIGHT WITH MEMORY \$1,495

LPO, BLACK LUG NUTS
Genuine Corvette Accessory \$225

LPO, BLACK WHEEL CENTER CAPS
with Gray Stingray logo, Genuine Corvette Accessory \$250

LPO, FLOOR MATS, PREMIUM CARPETED
with car silhouette logo, Genuine Corvette Accessory \$235

LPO, ILLUMINATED SILL PLATES
with Stingray logo, Genuine Corvette Accessory \$345

SUSPENSION, Z51 PERFORMANCE WITH MAGNETIC
SELECTIVE RIDE CONTROL
includes (B4Z) Performance Traction Management \$1,895

Z51 PERFORMANCE PACKAGE
includes (J55) Z51 performance brakes, (FE3) Z51 performance suspension, (NPP) performance exhaust, (GM7) performance rear axle ratio, (G96) Electronic Limited Slip Differential (eLSD), (T0A) Z51 rear spoiler, front splitter, (XFQ) 245/35ZR19 front and 305/30ZR20 rear, blackwall, high performance tires and (V08) heavy-duty cooling system \$5,000

ARCTIC WHITE

3LT PREFERRED EQUIPMENT GROUP
includes Standard Equipment \$11,450

SEAT BELT COLOR, TORCH RED \$395

ADRENALINE RED, NAPA LEATHER SEATING SURFACES WITH
PERFORATED INSERTS

CUSTOM INTERIOR TRIM AND SEAT COMBINATION \$590

SEATS, GT2 BUCKET

Option Packages Total \$24,265

- Vehicle health management provides advanced warning of vehicle issues
- Visors, driver and passenger illuminated vanity mirrors, covered
- Windows, power with driver and passenger Express-Down/Up
- Wireless Charging for devices

Mechanical

- Brakes, 4-wheel antilock, 4-wheel disc 12.6" (321 mm) front and 13.3" (339 mm) rear brake rotors
 - Calipers, Black-painted- Differential, mechanical limited-slip
 - Engine, 6.2L V8 DI, high-output Variable Valve Timing (VVT), Active Fuel Management (AFM) (490 hp [365.4 kW] @ 6450 rpm, 465 lb-ft of torque [627.8 N-m] @ 5150 rpm)
 - Exhaust, aluminized stainless-steel with stainless-steel tips - Frame, aluminum structure
 - Rear wheel drive- Steering, power, magnetic rack-and-pinion, variable assist
 - Suspension, Corvette standard
 - Transmission, 8-speed dual clutch, includes manual and auto modes
-

Carbuffs

carbuffs.com

(925) 671-2010

2281-A Via De Mercados

Concord, CA 94520

© 2024 AutoRevo - All rights reserved. - **Powered by AutoRevo**