

3075 Leon Rd
Jacksonville , FL 32246

2005 Jeep Wrangler Rubicon Unlimited Hard Top

Nolan Hill

View this car on our website at premierautomotivesource.com/6891733/ebrochure



Our Price **\$0**

Specifications:

Year:	2005
VIN:	1J4FA64S45P360371
Make:	Jeep
Model/Trim:	Wrangler Rubicon Unlimited Hard Top
Condition:	Pre-Owned
Body:	SUV
Exterior:	Light Khaki Metallic
Engine:	4.0L SMPI I6 "POWER TECH" ENGINE
Interior:	Khaki Cloth
Transmission:	6-SPEED MANUAL TRANSMISSION
Mileage:	60,000
Drivetrain:	4 Wheel Drive
Economy:	City 14 / Highway 18

2005 WRANGLER RUBICON UNLIMITED

- 1 OWNER RUST FREE CALIFORNIA JEEP -

- RUBICON EXPRESS 3" SUSPENSION
SYSTEM -

- BILSTIEN 5100 SHOCKS -

- BANKS SIDEWINDER TURBO KIT &
INTERCOOLER -

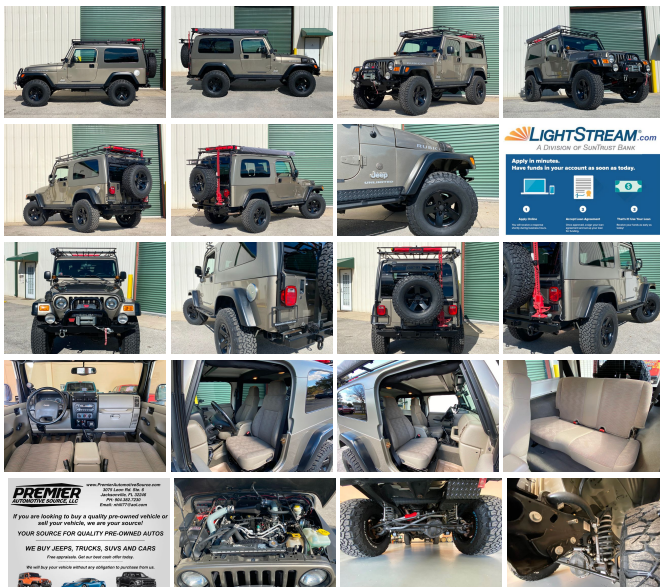
- DIABLO SPORT PROGRAMMER -

- GIBSON CAT BACK EXHAUST -

- BLACK POWDER COATED FACTORY
MOAB WHEELS -

- NEW 285/75/16 BFG K02 TIRES -

- WARN STEEL FRONT BUMPER & 9,500LB
WINCH -



WINCH

- STEEL REAR BUMPER & TIRE CARRIER -
 - GARVIN ROOF RACK -
 - ARB AWNING -
 - ROCK RAILS -
 - RIGID LED CUBE LIGHTS -
 - HI LIFT TRAIL JACK -
 - CB RADIO -
 - LEGENDARY 4.0 INLINE 6 ENGINE -
 - 6 SPEED MANUAL TRANSMISSION -
 - FACTORY DANA 44'S FRONT & REAR -
 - FACTORY 4.10 GEARS -
 - FACTORY LOCKERS -
 - KHAKI HARD TOP -
 - COLD A/C -
 - CLEAN ONE OWNER CARFAX HISTORY -
 - TRADES WELCOME -
- FOR FINANCING WE**
RECOMMEND <http://LIGHTSTREAM.COM>
- CALL OR TEXT NOLAN @ 904-382-7230 -
 - FACETIME WALK AROUND VIDEO AVAILABLE -

Lifted 2005 LJ Jeep Wrangler Rubicon Unlimited. This rare and collectible one owner California Jeep is in excellent condition. Very low miles. Khaki metallic, Khaki Hard Top, with Khaki interior, Factory DANA 44s, Factory 4:10 gears, Factory Locking Differentials, Factory 4 wheel disc brakes, HELLA Fog Lights, Cold A/C, 4.0L inline six cylinder, 6 speed manual. Thousands have been spent on this Jeep. Modifications include a Banks Sidewinder turbo kit & Intercooler, Gibson cat back exhaust, new 285/75/16 BFG K02 tires, Rubicon Express 3" suspension lift, Bilstein 5100 shocks, Warn steel front bumper, Warn 9,500K winch, steel rear bumper & tire carrier, Garmin roof

steel rear bumper & tire carrier, Garmin roof rack, ARB awning, Rigid LED cube lights, Rock rails with side steps, Hi-lift trail jack, CB radio and antenna. The Carfax history reports no accidents or issues. Just serviced and inspected, it looks, runs, and drives excellent. Sold with 2 keys, owners manual, original window sticker, Husky mats, winch controller, and Diablo sport programmer.

Call or text Nolan: 904-382-7230. We can also set up a time to do a FaceTime/video call while we walk-around the vehicle and you can see the vehicle and ask questions. ALL INVENTORY IS STORED INDOORS AND SHOWN BY APPOINTMENT. Trades accepted. All applicable sales tax, title, registration and a \$299 document fees apply.

Also check us out at:

http://www.instagram.com/nolan_premierautosource/

<https://www.facebook.com/premierautosource/>

<http://youtube.com/premierautosource/>

KEYWORD SEARCH: Lifted Toyota Lifted Lexus GX470 GX460 GX 470 GX 460 LX470 LX 470 LX570 LX 570 LX450 LX 450 FJ Cruiser Landcruiser Land Cruiser 4Runner 4 Runner Four Runner SR5 TRD 4WD 4x4 AWD Overland Overlanding Off Road Lift Jeep Wrangler Rubicon Sahara Sport X LJ TJ JK JL Hard Top Soft Top Bronco Blazer

2005 Jeep Wrangler Rubicon Unlimited Hard Top

Premier Automotive Source LLC - - View this car on our website at premierautomotivesource.com/6891733/ebrochure

Our Location :



2005 Jeep Wrangler Rubicon Unlimited Hard Top

Premier Automotive Source LLC - - View this car on our website at premierautomotivesource.com/6891733/ebrochure

Installed Options

Interior

- AM/FM stereo w/CD player-inc: changer control
- Cloth reclining high-back front bucket seats - (7) speakers w/subwoofer- Air conditioning
- Aux 12-volt pwr outlet- Black diamond plate sill guards- Cargo tie down loops
- Courtesy/underhood lamps- Easy access tip/slide driver seat- Fixed long mast antenna
- Folding rear seat- Front/rear seat/wheelhouse/cargo area carpeting
- Full length floor console- Glove box w/lock- Sport bar w/full padding- Tilt steering column
- Tip & slide passenger seat

Exterior

- Folding soft top- Variable intermittent windshield wipers- Deep tint sunscreen glass
- Fog lamps- Fold away exterior mirrors- Front door light tinted windows
- Premium fender flares

Safety

- AM/FM stereo w/CD player-inc: changer control
- Cloth reclining high-back front bucket seats - (7) speakers w/subwoofer- Air conditioning
- Aux 12-volt pwr outlet- Black diamond plate sill guards- Cargo tie down loops
- Courtesy/underhood lamps- Easy access tip/slide driver seat- Fixed long mast antenna
- Folding rear seat- Front/rear seat/wheelhouse/cargo area carpeting
- Full length floor console- Glove box w/lock- Sport bar w/full padding- Tilt steering column
- Tip & slide passenger seat

Mechanical

- (5) 16" x 8" "Moab" aluminum wheels - Full size spare tire w/outside carrier
- Matching spare wheel- 117-amp alternator- 19 gallon fuel tank- 4-wheel pwr disc brakes
- 4.0L SMPI I6 "Power Tech" engine - 4.11 axle ratio- 4750# GVWR
- 4:1 Rocktrac HD part-time 4WD system- 600-CCA maintenance free battery
- Front/rear stabilizer bars- HD 6-speed manual transmission
- HD Dana 44/226MM rear axle- HD Dana M44/216MM front axle
- High pressure gas-charged shock absorbers- LT245/75R16 on/off road BSW tires
- Next generation engine controller- Pwr steering- Skid plates-inc: transfer case, fuel tank
- Tethered gas cap- Tow hooks-inc: (2) front, (1) rear- Tru-lok front/rear differential

Option Packages

Factory Installed Packages

4.0L SMPI I6 "POWER TECH" ENGINE

6-SPEED MANUAL TRANSMISSION

25U RUBICON CUSTOMER PREFERRED ORDER SELECTION
PKG

-inc: 4.0L I6 engine, 6-speed manual trans

HARD TOP

-inc: rear window defroster, rear window wiper
w/washer \$795

Option Packages Total

\$795

DEALER POLICIES: Please review all photos carefully and ask questions prior to making an offer if there is anything you are not sure about. We welcome pre-sale inspections. Any descriptions we make of vehicles shall not be construed as any type of warranty. Our pictures are as thorough and precise as we can make them. Please be advised that this is not a brand new vehicle. It is a pre-owned vehicle and has previously been driven, so therefore with respect to the miles there will most likely be average wear and tear, such as minor scratches, minor dings, or small rock chips. We do our best to disclose any substantial blemishes in our photos and descriptions. If our vehicles include manuals, service records or extra sets of keys, it will be shown in the pictures and noted in the description. The advertised mileage is a round number and may vary slightly from the exact mileage due to demo and test drives. Once a vehicle leaves our premises, no refunds, credits, or adjustments, will be issued. All Vehicles are conveyed AS-IS. Dealer neither makes nor implies any warranty on this or any vehicle. Any dispute that may arise shall take place under the laws of the state of Florida, in the state of Florida and all sales are subject to binding Arbitration under the rules of the American Arbitration Association. All applicable sales tax, tag and title fees apply. When we receive a vehicle into our inventory, sometimes the title is being held by a bank or lender as collateral for the previous loan or payoff. Occasionally there is a delay in receiving the title from these lending institutions after payoff of the loan for up to two weeks. While we usually have the titles in our possession, there are instances where we may be waiting for the title to arrive. We guarantee clean titles on our vehicles unless otherwise noted. In some cases we may hold titles until cashiers checks or other funds are cleared or unless other arrangements were agreed upon. Titles will be sent via Fedex for proper tracking. Thank you for your patience and understanding.

Premier Automotive Source LLC

premierautomotivesource.com

3075 Leon Rd

Jacksonville , FL 32246

© 2024 AutoRevo - All rights reserved. - Powered by AutoRevo