



2000 Honda Accord LX

Our Price \$2,495

View this vehicle on our website at priceisrightoregon.com

Price is Right Oregon

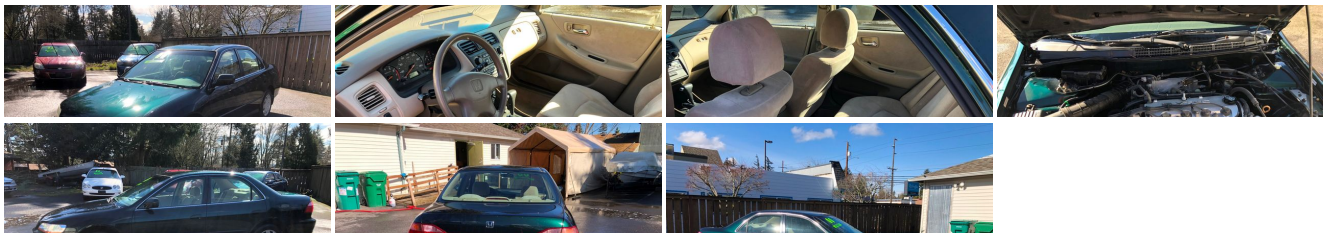
[971-279-2550](tel:971-279-2550)

16306 NE Glisan St, Portland, OR 97230

[Photos](#)

[Details](#)

[Contact](#)



Specifications:

Year:	2000
VIN:	JHMCG5648YC018142
Make:	Honda
Model/Trim:	Accord LX
Condition:	Pre-Owned
Body:	Sedan

Exterior:	Green
Engine:	2.3L VTEC LEV-certified I4 engine
Interior:	Gray Cloth
Mileage:	213,260
Drivetrain:	Front Wheel Drive
Economy:	City 23 / Highway 30

Vehicle Description

Installed Options

Interior

- Fold down rear seat center armrest w/trunk pass-through
- Fold-down rear seatback w/lock- Adjustable steering column- Air conditioning
- Cargo area light- Center console armrest w/storage compartment- Cruise control
- Driver seat w/manual height adjustment- Dual illuminated vanity mirrors
- Front/rear beverage holders- High-pwr AM/FM stereo w/cassette-inc: (4) speakers
- Maintenance interval indicator- Map lights- Pwr door locks
- Pwr windows w/auto down driver window- Rear seat heating ducts
- Rear window defroster w/timer- Reclining cloth front bucket seats
- Remote trunk release w/lock- Trunk-open indicator light

Exterior

- 2-speed/variable intermittent windshield wipers- Black body-side moldings
- Body-colored pwr mirrors- Multi-reflector halogen headlamps

Safety

- Fold down rear seat center armrest w/trunk pass-through
- Fold-down rear seatback w/lock- Adjustable steering column- Air conditioning
- Cargo area light- Center console armrest w/storage compartment- Cruise control
- Driver seat w/manual height adjustment- Dual illuminated vanity mirrors
- Front/rear beverage holders- High-pwr AM/FM stereo w/cassette-inc: (4) speakers
- Maintenance interval indicator- Map lights- Pwr door locks
- Pwr windows w/auto down driver window- Rear seat heating ducts
- Rear window defroster w/timer- Reclining cloth front bucket seats
- Remote trunk release w/lock- Trunk-open indicator light

Mechanical

- 15" x 6.0" steel wheels w/full wheel covers - 17.1 gallon fuel tank
- 2.3L VTEC LEV-certified I4 engine
- 4-speed electronically-controlled automatic transmission w/OD, lockup torque converter, grade logic programming
- Electronic ignition w/immobilizer theft-deterrent system- Front-wheel drive
- Front/rear stabilizer bars- Independent double wishbone front suspension w/coil springs
- Multi-link double wishbone rear suspension
- P195/65HR15 SBR Michelin MXV4 Plus tires- Pwr front ventilated disc/rear drum brakes
- Variable-assist pwr rack & pinion steering

Price is Right Oregon

Price is Right Oregon

View this car on our website at priceisrightoregon.com/6888834

Website: priceisrightoregon.com

Phone: 971-279-2550

Map: 16306 NE Glisan St, Portland, OR 97230

