



## 2017 Jeep Renegade Latitude

**Our Price \$16,550**

View this vehicle on our website at [harrisonburgmotors.com](http://harrisonburgmotors.com)



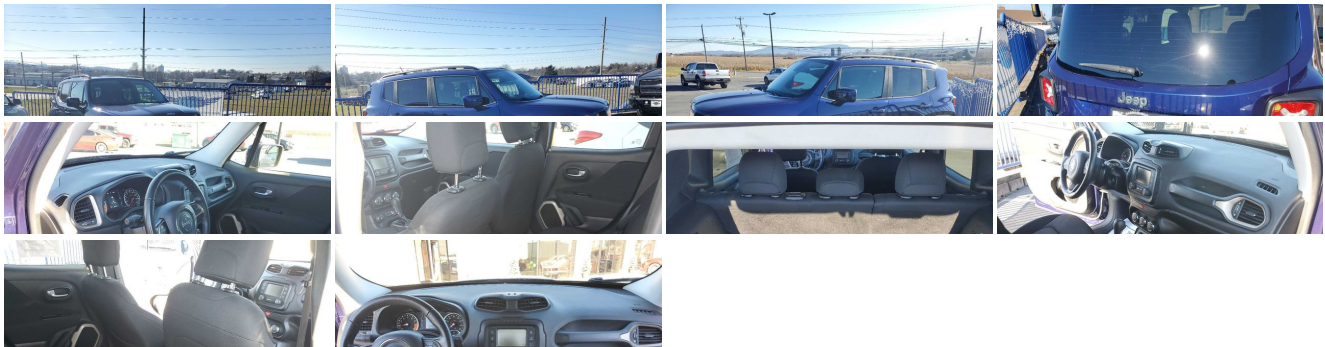
(540) 564-9657

1381 N. Liberty St. , Harrisonburg, VA 22802

Photos

Details

Contact



### Specifications:

Year:

2017

VIN:

ZACCJBBB3HPE81713

|                    |                          |
|--------------------|--------------------------|
| <b>Make:</b>       | Jeep                     |
| <b>Stock:</b>      | PQD43                    |
| <b>Model/Trim:</b> | Renegade Latitude        |
| <b>Condition:</b>  | Pre-Owned                |
| <b>Body:</b>       | SUV                      |
| <b>Exterior:</b>   | BLUE                     |
| <b>Engine:</b>     | ENGINE: 2.4L I4 MULTIAIR |
| <b>Interior:</b>   | Cloth                    |
| <b>Mileage:</b>    | 76,427                   |
| <b>Drivetrain:</b> | 4 Wheel Drive            |
| <b>Economy:</b>    | City 21 / Highway 29     |

## Vehicle Description

### Installed Options

#### Interior

- 60-40 Folding Split-Bench Front Facing Fold Forward Seatback Cloth Rear Seat
- Gauges -inc: Speedometer, Odometer, Voltmeter, Engine Coolant Temp, Tachometer, Oil Temperature, Transmission Fluid Temp, Trip Odometer and Trip Computer
- Power Rear Windows and Fixed 3rd Row Windows
- Proximity Key For Push Button Start Only
- Remote Keyless Entry w/Integrated Key Transmitter, Illuminated Entry and Panic Button
- Manual Air Conditioning- Cloth Low-Back Bucket Seats
- Full Carpet Floor Covering -inc: Carpet Front And Rear Floor Mats
- Power 1st Row Windows w/Driver And Passenger 1-Touch Up/Down
- Power Door Locks w/Autolock Feature- Trip Computer
- 6-Way Driver Seat -inc: Manual Recline, Height Adjustment and Fore/Aft Movement
- 4-Way Passenger Seat -inc: Manual Recline, Fore/Aft Movement and Fold Flat
- Manual Tilt/Telescoping Steering Column- Leather Steering Wheel- Front Cupholder
- Rear Cupholder- Compass- Valet Function- Remote Releases -Inc: Power Fuel
- Cruise Control w/Steering Wheel Controls- HVAC -inc: Underseat Ducts
- Illuminated Locking Glove Box- Driver Foot Rest
- Interior Trim -inc: Colored Instrument Panel Insert, Colored Door Panel Insert, Colored Console Insert and Metal-Look Interior Accents
- Full Cloth Headliner- Cloth Door Trim Insert- Metal-Look Gear Shifter Material
- Day-Night Rearview Mirror
- Driver And Passenger Visor Vanity Mirrors w/Driver And Passenger Illumination
- Full Floor Console w/Covered Storage, Mini Overhead Console w/Storage and 2 12V DC Power Outlets
- Front Map Lights- Fade-To-Off Interior Lighting- Carpet Floor Trim
- Cargo Area Concealed Storage- Cargo Features -inc: Spare Tire Mobility Kit
- Cargo Space Lights- Driver / Passenger And Rear Door Bins
- Delayed Accessory Power- Systems Monitor- Redundant Digital Speedometer
- Outside Temp Gauge- Digital/Analog Display- Seats w/Cloth Back Material
- Manual Anti-Whiplash Adjustable Front Head Restraints and Manual Adjustable Rear Head Restraints
- Sliding Front Center Armrest- 2 Seatback Storage Pockets
- Sentry Key Engine Immobilizer- 2 12V DC Power Outlets- Air Filtration

#### Exterior

- Wheels: 17" x 7.0" Aluminum- Tires: P215/60R17 BSW AS Touring
- Variable Intermittent Wipers- Tailgate/Rear Door Lock Included w/Power Door Locks
- Spare Tire Mobility Kit- Black Front Bumper
- Black Rear Step Bumper w/Metal-Look Rub Strip/Fascia Accent
- Black Bodyside Cladding and Black Wheel Well Trim- Black Side Windows Trim
- Body-Colored Door Handles
- Body-Colored Power Heated Side Mirrors w/Manual Folding
- Fixed Rear Window w/Fixed Interval Wiper and Defroster- Deep Tinted Glass
- Fully Galvanized Steel Panels- Lip Spoiler- Black Grille w/Chrome Accents
- Front License Plate Bracket- Liftgate Rear Cargo Access- Roof Rack Rails Only
- Perimeter/Approach Lights
- Fully Automatic Aero-Composite Halogen Daytime Running Headlamps w/Delay-Off

### Option Packages

#### Factory Installed Packages

|                          |         |
|--------------------------|---------|
| ENGINE: 2.4L I4 MULTIAIR |         |
| -inc: Engine Oil Cooler  | \$1,530 |

|                       |         |
|-----------------------|---------|
| Option Packages Total | \$1,530 |
|-----------------------|---------|

- Front Fog Lamps- Cornering Lights

---

## Safety

- 60-40 Folding Split-Bench Front Facing Fold Forward Seatback Cloth Rear Seat
- Gauges -inc: Speedometer, Odometer, Voltmeter, Engine Coolant Temp, Tachometer, Oil Temperature, Transmission Fluid Temp, Trip Odometer and Trip Computer
- Power Rear Windows and Fixed 3rd Row Windows
- Proximity Key For Push Button Start Only
- Remote Keyless Entry w/Integrated Key Transmitter, Illuminated Entry and Panic Button
- Manual Air Conditioning- Cloth Low-Back Bucket Seats
- Full Carpet Floor Covering -inc: Carpet Front And Rear Floor Mats
- Power 1st Row Windows w/Driver And Passenger 1-Touch Up/Down
- Power Door Locks w/Autolock Feature- Trip Computer
- 6-Way Driver Seat -inc: Manual Recline, Height Adjustment and Fore/Aft Movement
- 4-Way Passenger Seat -inc: Manual Recline, Fore/Aft Movement and Fold Flat
- Manual Tilt/Telescoping Steering Column- Leather Steering Wheel Front Cupholder
- Rear Cupholder- Compass- Valet Function- Remote Releases -inc: Power Fuel
- Cruise Control w/Steering Wheel Controls- HVAC -inc: Underseat Ducts
- Illuminated Locking Glove Box- Driver Foot Rest
- Interior Trim -inc: Colored Instrument Panel Insert, Colored Door Panel Insert, Colored Console Insert and Metal-Look Interior Accents
- Full Cloth Headliner- Cloth Door Trim Insert- Metal-Look Gear Shifter Material
- Day-Night Rearview Mirror
- Driver And Passenger Visor Vanity Mirrors w/Driver And Passenger Illumination
- Full Floor Console w/Covered Storage, Mini Overhead Console w/Storage and 2 12V DC Power Outlets
- Front Map Lights- Fade-To-Off Interior Lighting- Carpet Floor Trim
- Cargo Area Concealed Storage- Cargo Features -inc: Spare Tire Mobility Kit
- Cargo Space Lights- Driver / Passenger And Rear Door Bins
- Delayed Accessory Power- Systems Monitor- Redundant Digital Speedometer
- Outside Temp Gauge- Digital/Analog Display- Seats w/Cloth Back Material
- Manual Anti-Whiplash Adjustable Front Head Restraints and Manual Adjustable Rear Head Restraints
- Sliding Front Center Armrest- 2 Seatback Storage Pockets
- Sentry Key Engine Immobilizer- 2 12V DC Power Outlets- Air Filtration

---

## Mechanical

- Transmission: 9-Speed 948TE Automatic -inc: Vinyl Shift Knob
- Engine: 2.4L I4 MultiAir -inc: Engine Oil Cooler - 3.734 Axle Ratio
- Normal Duty Suspension- GVWR: 4,586 lbs- 50 State Emissions
- Transmission w/Driver Selectable Mode- Electronic Transfer Case
- Automatic Full-Time Four-Wheel Drive- Battery w/Run Down Protection
- Towing Equipment -inc: Trailer Sway Control- Gas-Pressurized Shock Absorbers
- Front And Rear Anti-Roll Bars- Electric Power-Assist Steering- 12.7 Gal. Fuel Tank
- Single Stainless Steel Exhaust- Permanent Locking Hubs
- Strut Front Suspension w/Coil Springs- Multi-Link Rear Suspension w/Coil Springs
- 4-Wheel Disc Brakes w/4-Wheel ABS, Front Vented Discs, Brake Assist, Hill Hold Control and Electric Parking Brake

Harrisonburg Motors

Harrisonburg Motors

View this car on our website at [harrisonburgmotors.com/6888460](http://harrisonburgmotors.com/6888460)

Website: [harrisonburgmotors.com](http://harrisonburgmotors.com)

Phone: (540) 564-9657

Map: [1381 N. Liberty St., Harrisonburg, VA 22802](#)

