

2008 HUMMER H2 4X4 SOUTHERN COMFORT EDITION LOADED

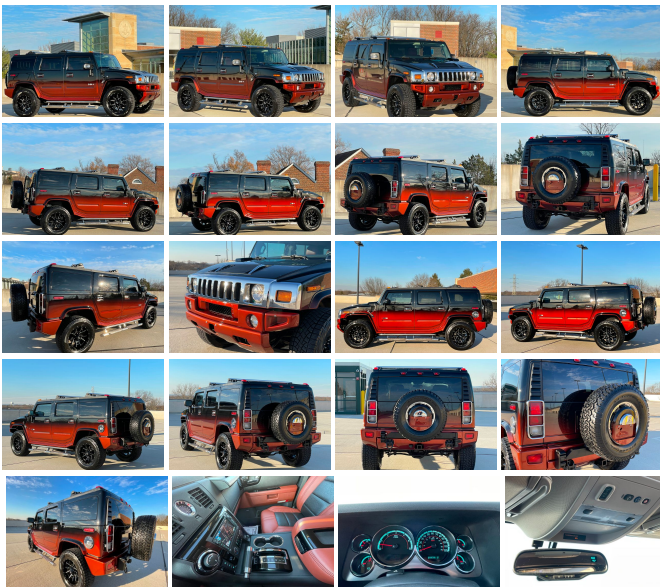
View this car on our website at njtruckking.com/6886696/ebrochure



Our Price **\$49,900**

Specifications:

| | |
|--------------------|---|
| Year: | 2008 |
| VIN: | 5GRGN23808H107008 |
| Make: | HUMMER H2 4X4 |
| Model/Trim: | SOUTHERN COMFORT EDITION LOADED |
| Condition: | Pre-Owned |
| Body: | SUV |
| Exterior: | Black |
| Engine: | ENGINE, VORTEC 6.2L V8 SFI (393 HP [293.1 KW] @ 5700 RPM, 415 LB-FT OF TORQUE [562.7 N-M] @ 4300 RPM) |
| Interior: | Brown |
| Mileage: | 53,162 |
| Drivetrain: | 4 Wheel Drive |



2008 HUMMER H2

~SOUTHERN COMFORT~

CLEAN CARFAX !

(53,162 ORIGINAL / ACTUAL MILES)

HARD LOADED

NAVIGATION

HEATED FRONT AND REAR SEATS

RARE COLOR COMBO

SUNROOF

REAR ENTERTAINMENT

ADD DOWN

3RD ROW

ALL THE OPTIONS

GARAGED SINCE NEW !

EXCELLENT CONDITION!

RUNS AND DRIVES LIKE NEW

ORIGINAL OWNERS MANUALS

WILL BE HARD PRESSED TO FIND A NICER HUMMER

VERY RARE SUV !!!

\$54,900

CALL / TEXT AARON 856-693-9370 FOR MORE INFO

CALL ME TO BUY IT NOW!

DEPOSITS ARE NON-REFUNDABLE

2008 HUMMER H2 4X4 SOUTHERN COMFORT EDITION LOADED

King of Cars and Trucks - 856-693-3181 - View this car on our website at njtruckking.com/6886696/ebrochure

Our Location :



Installed Options

Interior

- Air conditioning, dual-zone automatic climate control with individual climate settings for driver and right-front passenger
- Air conditioning, rear auxiliary with heater and rear seat fan/temperature controls
- Console, floor with storage bin, 2 cup holders, rear powerpoints, top tray, integrated rear audio controls and rear air vents
- Door locks, power programmable with rear child security
- Power outlets, 6 auxiliary with covers, 12-volt, 3 front, 2 intermediate and 1 in the rear cargo area
- Remote Keyless Entry, with 2 transmitters and remote panic button
- Seats, front bucket includes 8-way power driver and front passenger seat adjusters, 4-way lumbar control, 2-position driver memory and 4-way adjustable outboard head restraints
- Steering wheel accessory controls, includes transmission tap-up and tap-down
- Assist handles, front passenger and rear outboard
- Cargo mat, rubber (Not included when (AS3) third row folding two-passenger seat is ordered.)
- Cruise control, electronic with set and resume speed
- Cup holders, front console and rear seat armrest - Defogger, rear-window electric
- Driver Information Center with trip computer (personal and business trip odometer, fuel used, average speed, average fuel economy, trip timers, 15-day vehicle speed history, annual mileage and personalization features) and message center (monitors up to 23 different systems including low fuel, transmission temperature, engine coolant, security, oil level, oil pressure, and oil change)
- Floor covering, color-keyed carpeting- Glovebox, passenger-side
- Lighting, interior with front and interior dome, reading, instrument panel courtesy, console, glovebox, door switches and illuminated entry
- Map pockets
- Mirror, inside rearview auto-dimming with 8-point compass and outside temperature display
- Remote vehicle starter system- Retained accessory power- Seat, rear 60/40 split-folding
- Seats, heated first and second row - Steering wheel, leather-wrapped
- Theft-deterrent system, vehicle, PASSlock
- Visors, driver and front passenger, padded with cloth trim, extenders and secondary shades, color-keyed
- Windows, power with driver and global Express-Down

Exterior

- Tires, LT315/70R17 all-terrain, blackwall (With 1SC Preferred Equipment Group, not available with (WS2) Silver Ice Limited Edition)
- Wheels, 5 - 17" x 8.5" (43.2 cm x 21.6 cm) aluminum (With 1SB Preferred Equipment Group, upgradeable to (Q9W) 17" x 8.5" polished aluminum wheels) (Requires 1SA or 1SB Preferred Equipment Group)
- Body, liftgate with fixed glass- Bumpers, front and rear painted Silver
- Daytime Running Lamps- Door handles, chrome- Doors, triple-sealed
- Fuel filler door, chrome aluminum
- Glass, Solar-Ray deep-tinted (all windows except light-tinted on windshield driver- and front passenger-side glass)
- Grille, chrome- Headlamps, dual composite halogen with automatic exterior lamp control
- Lamps, clearance marker, 2 front and 2 rear
- Lamps, identification markers, 3 front and 3 rear - Luggage rack side rails
- Mirrors, outside heated power-adjustable, power-folding and driver-side auto-dimming with memory
- Recovery hooks, front and rear
- Spare tire carrier, rear, bumper-mounted with jack storage provisions
- Tire, full-size spare with cover- Wipers, front intermittent wet-arm with pulse washers
- Wipers, rear intermittent with washer- Wiring provisions, auxiliary front lighting

Safety

- Air conditioning, dual-zone automatic climate control with individual climate settings for driver and right-front passenger
- Air conditioning, rear auxiliary with heater and rear seat fan/temperature controls
- Console, floor with storage bin, 2 cup holders, rear powerpoints, top tray, integrated rear audio controls and rear air vents
- Door locks, power programmable with rear child security
- Power outlets, 6 auxiliary with covers, 12-volt, 3 front, 2 intermediate and 1 in the rear cargo area
- Remote Keyless Entry, with 2 transmitters and remote panic button

Option Packages

Factory Installed Packages

ENGINE, VORTEC 6.2L V8 SFI (393 HP [293.1 KW] @ 5700 RPM,
415 LB-FT OF TORQUE [562.7 N-M] @ 4300 RPM)

- Seats, front bucket includes 8-way power driver and front passenger seat adjusters, 4-way lumbar control, 2-position driver memory and 4-way adjustable outboard head restraints
- Steering wheel accessory controls, includes transmission tap-up and tap-down
- Assist handles, front passenger and rear outboard
- Cargo mat, rubber (Not included when (AS3) third row folding two-passenger seat is ordered.)
- Cruise control, electronic with set and resume speed
- Cup holders, front console and rear seat armrest - Defogger, rear-window electric
- Driver Information Center with trip computer (personal and business trip odometer, fuel used, average speed, average fuel economy, trip timers, 15-day vehicle speed history, annual mileage and personalization features) and message center (monitors up to 23 different systems including low fuel, transmission temperature, engine coolant, security, oil level, oil pressure, and oil change)
- Floor covering, color-keyed carpeting- Glovebox, passenger-side
- Lighting, interior with front and interior dome, reading, instrument panel courtesy, console, glovebox, door switches and illuminated entry
- Map pockets
- Mirror, inside rearview auto-dimming with 8-point compass and outside temperature display
- Remote vehicle starter system- Retained accessory power- Seat, rear 60/40 split-folding
- Seats, heated first and second row - Steering wheel, leather-wrapped
- Theft-deterrent system, vehicle, PASSlock
- Visors, driver and front passenger, padded with cloth trim, extenders and secondary shades, color-keyed
- Windows, power with driver and global Express-Down

Mechanical

- 4-wheel drive- StabiliTrak, electronic stability control- Traction control, single wheel
 - Transfer case, electronic shift
 - Transmission, 6-speed automatic, heavy-duty, electronically controlled with overdrive, tow/haul mode and tap up/tap down shifting
 - Alternator, 160 amps- Battery rundown protection- Cooling, engine oil cooler
 - Differential, full-locking rear, electronic driver-selectable
 - Engine, Vortec 6.2L V8 SFI (393 hp [293.1 kW] @ 5700 rpm, 415 lb-ft of torque [562.7 N-m] @ 4300 rpm)
 - Frame, ladder-type- GVWR, 8600 lbs. (3901 kg)- Rear axle, 3.73 ratio- Steering, power
 - Suspension Package, Standard Ride, 5-link coil springs (Requires 1SA or 1SC Preferred Equipment Group)
 - Suspension, front independent with torsion bar and stabilizer bar
 - Throttle control, electronic
 - Trailing equipment, heavy-duty, includes front winch receiver provisions
 - Underbody protection, includes driveline protection, skid plates and rocker protection
-

King of Cars and Trucks

njtruckking.com

856-693-3181

1229 Broadway

Westville, New Jersey 08093

© 2024 AutoRevo - All rights reserved. - Powered by AutoRevo