

# 2012 Chevrolet Camaro 2SS

View this car on our website at [autoparkdallas.com/6881573/ebrochure](http://autoparkdallas.com/6881573/ebrochure)

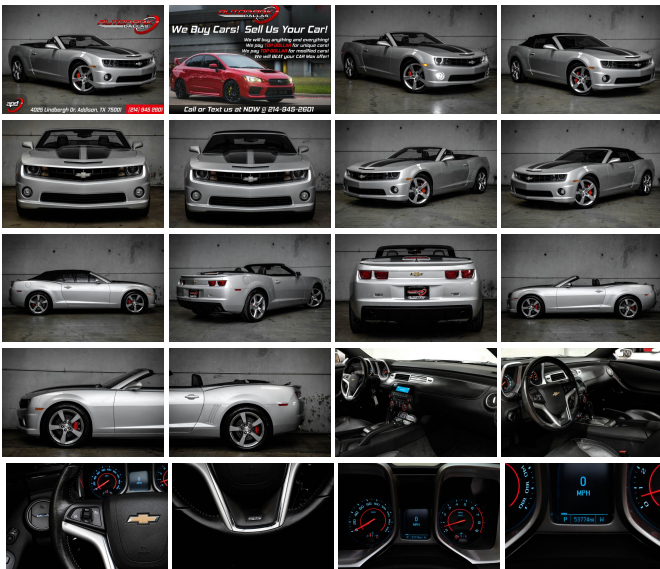


Our Price **\$21,995**

## Specifications:

<b>Year:</b>	2012
<b>VIN:</b>	2G1FK3DJ4C9104910
<b>Make:</b>	Chevrolet
<b>Model/Trim:</b>	Camaro 2SS
<b>Condition:</b>	Pre-Owned
<b>Body:</b>	Convertible
<b>Exterior:</b>	Silver Ice Metallic
<b>Engine:</b>	ENGINE, 6.2L V8 SFI
<b>Interior:</b>	Black Leather
<b>Transmission:</b>	TRANSMISSION, 6-SPEED AUTOMATIC
<b>Mileage:</b>	53,747
<b>Drivetrain:</b>	Rear Wheel Drive
<b>Economy:</b>	City 15 / Highway 24

AutoPark Dallas is excited to offer you this Convertible Silver Ice Metallic 2012 Chevrolet Camaro 2SS w/ RS Package for sale! Generations of Americans grew up with the Chevrolet Camaro and many can say its gone through MANY generational changes, this 2012 being the Fifth Generation where Big & Aggressive became the need! This Camaro is powered by the reliable 6.2L V8 engine that pumps 426 horses stock and the flag ship aspect being that new look body style that once again provides us consumers with a unique look to this age old muscle cars. Even better is our Camaro here at APD is a drop-top convertible giving you that sense of freedom on those beautiful 'gotta take cruise' type of days! A piece of American Muscle legacy and a blast of a daily driver, come check out this Camaro parked in our indoor 16,000 Sq Ft Showroom located in Dallas , Texas amongst our inventory of 100+ other Performance / Modified and Luxury cars!



## 2012 Chevrolet Camaro 2SS

\* Clean CarFax !\*

\* 2 Set of Keys !\*

\* RS Package !\*

Silver Ice Metallic Exterior

Black Soft-Top Convertible

Black Leather Interior

Hands Free Bluetooth

Heated Front Row Seats

Remote Start-Up  
Back-Up Camera w/ Guide Lines  
Factory BREMBO Brakes  
Digital Heads-Up Display  
Single-Zone Air Conditioning  
Cruise Control  
Powered Convertible Top  
Daytime Running Lights  
CD & AUX Capable  
Steering Wheel Mounted Controls  
Manual Mode w/ Paddle Shifters  
BOSTON Premium Audio System  
6.2L V8 SFI Engine  
6-Speed Automatic Transmission  
Rear Wheel Drive  
Professionally Detailed!  
Well Maintained!  
**\* Free CarFax Report !\***  
AND SO MUCH MORE!!!

---

## Financing is available!

Check out our Payment Calculator to get an estimate on your monthly payments!

**OR**

Get pre-approved in no time by filling out a credit application on the 'Finance' section of our website!

We also offer MANY different Extended Warranty options!

---

Check out our Google Reviews by  
**\*Clicking\* this LINK!**

Referrals and Testimonials is what our business is built on!

---

The team here at AutoPark Dallas, is dedicated to offering a level of customer service not usually found in the automobile industry. Thanks to years of extensive car buying / selling experience, we pursue quality used and new vehicles that are hand-picked from factory sources. Our love for automobiles and dislike of traditional dealership tactics is what motivates us to provide the service we do! The pride we take in continuing this service long after the vehicle has been delivered is what we strive for! Looking forward to making every effort to see that our

customer is completely satisfied and a friend for life!

Pre-purchase inspections are always  
welcomed!

We also offer airport pick-up, competitive financing options, free CarFax Reports, Car Shipping nationwide, Extended Warranty plans, and so much more!

Trade-In(s) are always accepted or sell us your used car (MODIFIED OR NOT)! Please call or text for more information about Trade-Ins or selling your car to us @ (214) 945-2601!

---

**#(214) 945-2601**

Call or Text **Anytime!**

Se habla Español

**WE BUY CARS!**

**WWW.AUTOPARKDALLAS.COM**

---

2012 Chevrolet Camaro 2SS

Auto Park Dallas - (214) 945-2601 - View this car on our website at [autoparkdallas.com/6881573/ebrochure](http://autoparkdallas.com/6881573/ebrochure)

## Vehicle History Report : as Of 01/18/2021

 Snapshot

2012 CHEVROLET CAMARO 2SS

	No accidents or damage reported to CARFAX
	4 Previous owners
	12 Service history records
	Types of owners: Corporate fleet, Personal
	Last owned in Arizona
	53,747 Last reported odometer reading



**FREE CARFAX Report**

See the full CARFAX Report for additional information

\*carfax Snapshot is a reflection of available information on the date the report was pulled. carfax is constantly being updated with new information and is subject to change at any time.

## Our Location :



2012 Chevrolet Camaro 2SS

Auto Park Dallas - (214) 945-2601 - View this car on our website at [autoparkdallas.com/6881573/ebrochure](http://autoparkdallas.com/6881573/ebrochure)

## Installed Options

### Interior

- Air conditioning, single-zone manual- Air filtration system with pollen filter
- Compass, located in Driver Information Center- Console, floor, with armrest
- Cruise control, electronic with set and resume speed, steering wheel mounted
- Cup holders, 2 front- Dead pedal, driver- Defogger, rear-window, electric
- Door locks, power programmable with lockout protection- Floor mats, carpeted front
- Gauges, auxiliary, multi-function includes 4 gauges: oil pressure, battery voltage, oil temperature and transmission fluid temperature, mounted on center console forward of shifter
- Glovebox, lockable
- Head-Up Display with digital readouts for vehicle speed, selected gear, audio system information, high-beam indicator, compass, outside air temperature, turn signals, tachometer, vehicle messages, Turn-by-Turn information and phone information
- Instrumentation, analog with Driver Information Center display, includes speedometer, tachometer, fuel gauge and engine temperature gauge
- Lighting, front reading lamps- Map pockets, front doors
- Mirror, inside rearview auto-dimming with rearview camera display
- Power outlets, 2 auxiliary 1 located in center console storage area and 1 located at front of center console
- Remote Keyless Entry
- Seat adjuster, driver, 6-way power (fore/aft, up/down, tilt) with power recliner
- Seat adjuster, front passenger, 6-way power (fore/aft, up/down, tilt) with power recliner
- Seat trim, front leather seating surfaces
- Seats, front Sport bucket includes adjustable head restraints and fixed rear seat (Includes passenger-side seatback map pocket.)
- Seats, heated driver and front passenger - Shift knob, leather-wrapped
- Sill plate, Chevrolet- Steering column, manual rake and telescopic
- Steering wheel, 3-spoke leather-wrapped- Trunk release, remote, located on driver-side
- Universal Home Remote includes garage door opener, 3-channel programmable
- Visors, driver and front passenger vanity mirrors

- Windows, power with driver and passenger Express-Down/Up

## Exterior

- Convertible top, power folding includes glass rear window with integral defogger
- Door handles, body-color
- Fascias, front and rear body-color, SS-specific with unique front grille and rear diffuser, lower extension and front air scoop
- Fog lamps (When (WRS) RS Package is ordered, fog lamps act as Daytime Running Lamps.)
- Headlamps, halogen composite with automatic exterior lamp control
- Hood blanket with debossed Chevrolet bowtie
- Mirrors, outside heated power-adjustable and driver-side auto-dimming, body-color
- Moldings, body-color lower rocker
- Spare tire and wheel, not desired tire sealant and inflator kit in place of spare tire
- Spoiler, rear- Tire sealant and inflator kit in place of spare tire
- Tires, P245/45R20 front and P275/40R20 rear, blackwall, summer - Tonneau cover
- Wheels, 20" x 8" (50.8 cm x 20.3 cm) front and 20" x 9" (50.8 cm x 22.9 cm) rear flangeless, painted aluminum with Bright Silver finish (Midnight Silver finish when (WRS) RS Package is ordered except when (AJA) Synergy Series Special Edition is ordered - finish remains Bright Silver.)
- Wipers, front intermittent

## Safety

- Air conditioning, single-zone manual- Air filtration system with pollen filter
- Compass, located in Driver Information Center- Console, floor, with armrest
- Cruise control, electronic with set and resume speed, steering wheel mounted
- Cup holders, 2 front- Dead pedal, driver- Defogger, rear-window, electric
- Door locks, power programmable with lockout protection- Floor mats, carpeted front
- Gauges, auxiliary, multi-function includes 4 gauges: oil pressure, battery voltage, oil temperature and transmission fluid temperature, mounted on center console forward of shifter
- Glovebox, lockable
- Head-Up Display with digital readouts for vehicle speed, selected gear, audio system information, high-beam indicator, compass, outside air temperature, turn signals, tachometer, vehicle messages, Turn-by-Turn information and phone information
- Instrumentation, analog with Driver Information Center display, includes speedometer, tachometer, fuel gauge and engine temperature gauge
- Lighting, front reading lamps- Map pockets, front doors
- Mirror, inside rearview auto-dimming with rearview camera display
- Power outlets, 2 auxiliary 1 located in center console storage area and 1 located at front of center console
- Remote Keyless Entry
- Seat adjuster, driver, 6-way power (fore/aft, up/down, tilt) with power recliner
- Seat adjuster, front passenger, 6-way power (fore/aft, up/down, tilt) with power recliner
- Seat trim, front leather seating surfaces
- Seats, front Sport bucket includes adjustable head restraints and fixed rear seat (Includes passenger-side seatback map pocket.)
- Seats, heated driver and front passenger - Shift knob, leather-wrapped
- Sill plate, Chevrolet- Steering column, manual rake and telescopic
- Steering wheel, 3-spoke leather-wrapped- Trunk release, remote, located on driver-side
- Universal Home Remote includes garage door opener, 3-channel programmable
- Visors, driver and front passenger vanity mirrors
- Windows, power with driver and passenger Express-Down/Up

## Mechanical

- Alternator, 150 amps- Axle, 3.45 ratio
- Battery, maintenance-free with rundown protection and retained accessory power
- Brakes, 4-wheel antilock, 4-wheel disc (Brembo performance 4 piston front and 4 piston rear brakes.)
- Differential, limited slip
- Engine, 6.2L V8 SFI (426 hp [317.6 kW] @ 5900 rpm, 420 lb-ft of torque [567.0 N-m] @ 4600 rpm) (Requires (MN6) 6-speed manual transmission.)
- Exhaust, dual-outlet stainless-steel with polished tips- Rear wheel drive
- Steering, power, variable ratio- Suspension, Performance- Transmission, 6-speed manual

## Option Packages

### Factory Installed Packages

-  
ENGINE, 6.2L V8 SFI

(4000 rpm [295.3 kW] @ 4300 rpm,  
410 lb-ft of torque [553.5 N-m]  
@ 4300 rpm)

---

**TRANSMISSION, 6-SPEED AUTOMATIC**

includes TAPshift manual shift  
controls on steering wheel **\$1,185**

---

**HEADLAMPS, HIGH INTENSITY  
DISCHARGE**

with automatic exterior lamp  
control

---

**REMOTE VEHICLE STARTER SYSTEM**

includes Remote Keyless Entry

---

**RS PACKAGE**

includes (R3Z) 20" x 9" front and  
20" x 9" rear flangeless, painted  
aluminum wheels with Midnight  
Silver finish and (T4F) high  
intensity discharge headlamps **\$1,350**

---

**AXLE, 3.27 RATIO**

---

**EMISSIONS, FEDERAL REQUIREMENTS**

---

**SILVER ICE METALLIC**

---

**STANDARD PAINT**

---

**2SS PREFERRED EQUIPMENT GROUP**

includes Standard Equipment

---

**AUDIO SYSTEM, AM/FM STEREO WITH  
CD-ROM AND MP3 PLAYBACK**

music navigator, Graphic  
Information Display (GID) and  
auxiliary input jack, includes  
outside temperature display

---

**BLACK, FRONT LEATHER SEATING  
SURFACES**

---

**SEATS, FRONT SPORT BUCKET**

includes adjustable head  
restraints and fixed rear seat

---

**BLACK TOP**

---

**WHEELS, 20" X 8" (50.8 CM X 20.3 CM)  
FRONT AND 20" X 9" (50.8 CM X 22.9  
CM) REAR FLANGELESS, PAINTED  
ALUMINUM**

with Bright Silver finish

---

**Option Packages Total**

**\$2,535**



[autoparkdallas.com](http://autoparkdallas.com)

(214) 945-2601

4025 Lindbergh Dr.

Addison, TX 75001

© 2021 AutoRevo - All rights reserved. - Powered by AutoRevo