



## 2019 Chevrolet Silverado 1500 RST

**Our Price \$43,995**

View this vehicle on our website at [autodepotcalexico.com](http://autodepotcalexico.com)

Auto Depot of Calexico

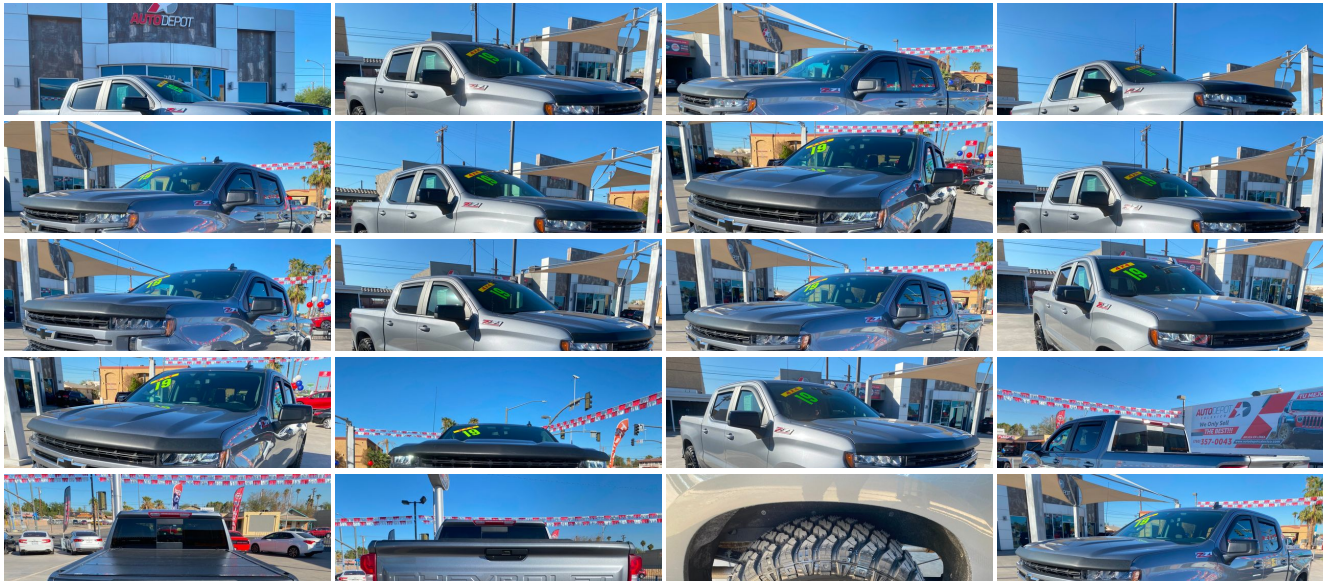
760-357-0043

747 Imperial Ave , Calexico, CA 92231

Photos

Details

Contact



## Specifications:

<b>Year:</b>	2019
<b>VIN:</b>	<a href="#">1GCUYEED1KZ348391</a>
<b>Make:</b>	Chevrolet
<b>Stock:</b>	5894
<b>Model/Trim:</b>	Silverado 1500 RST
<b>Condition:</b>	Pre-Owned
<b>Body:</b>	Pickup Truck
<b>Exterior:</b>	Shadow Gray Metallic
<b>Engine:</b>	ENGINE, 5.3L ECOTEC3 V8
<b>Interior:</b>	Jet Black Cloth
<b>Transmission:</b>	TRANSMISSION, 10-SPEED AUTOMATIC, ELECTRONICALLY CONTROLLED
<b>Mileage:</b>	46,732
<b>Drivetrain:</b>	4 Wheel Drive
<b>Economy:</b>	City 16 / Highway 22

## Vehicle Description

### Installed Options

#### Interior

- Defogger, rear-window electric- Door locks, power- Keyless Open and Start
- Power outlet, front auxiliary, 12-volt- Power outlet, rear auxiliary, 12-volt
- Seat, rear 60/40 folding bench (folds up), 3-passenger (includes child seat top tether anchor)
- Seats, front 40/20/40 split-bench with covered armrest storage and under-seat storage (lockable) (Not available with (PCH) Convenience Package with Bucket Seats.)
- Window, power front, passenger express down- Windows, power rear, express down
- Air conditioning, single-zone manual, semi-automatic- Air vents, rear, heating/cooling
- Assist handles front A-pillar mounted for driver and passenger, rear B-pillar mounted
- Compass located in instrument cluster
- Cruise control, electronic with set and resume speed, steering wheel-mounted
- Driver Information Center, 4.2" diagonal color display includes driver personalization
- Exterior Temperature Display located in radio display
- Floor covering, color-keyed carpeting
- Floor mats, rubberized vinyl rear (Deleted when LPO floor liners are ordered.)
- Floor mats, rubberized vinyl, front (Deleted when LPO floor liners are ordered.)
- Instrument cluster, 6-gauge cluster featuring speedometer, fuel level, engine temperature, tachometer, voltage and oil pressure
- Mirror, inside rearview, manual tilt- Rear Seat Reminder- Remote vehicle starter system
- Seat adjuster, driver 4-way manual- Seat adjuster, passenger 4-way manual
- Seat trim, Cloth
- Steering column, Tilt-Wheel, manual with wheel locking security feature
- Steering column, lock control, electrical- Steering wheel audio controls
- Steering wheel, urethane- Theft-deterrent system, unauthorized entry
- USB ports, dual, charge-only (2nd row)- Window, power front, drivers express up/down

#### Exterior

- Headlamps, LED reflector with LED signature Daytime Running Lamps
- Recovery hooks, front, frame-mounted, black
- Tire, spare 265/70R17SL all-season, blackwall
- Tires, 265/65R18SL all-season, blackwall
- Wheels, 18" x 8.5" (45.7 cm x 21.6 cm) Bright Silver painted aluminum
- Black Bowtie, (front grille)- Bumper, front (Body-color.)- Bumper, rear (Body-color.)
- Cargo tie downs (12), fixed rated at 500 lbs per corner - CornerStep, rear bumper
- Door handles, body-color- Fog lamps, front, LED- Glass, deep-tinted
- Grille (Body color bars with high gloss Black mesh inserts.)
- LED Cargo Area Lighting located in pickup bed, activated with switch on center switch bank or key fob
- Lamps, cargo area, cab mounted integrated with center high mount stop lamp, with switch

### Option Packages

#### Factory Installed Packages

---

ENGINE, 5.3L ECOTEC3 V8 (355 hp [265 kW] @ 5600 rpm, 383 lb-ft of torque [518 Nm] @ 4100 rpm); featuring all-new Dynamic Fuel Management that enables the engine to operate in 17 different patterns between 2 and 8 cylinders, depending on demand, to optimize power delivery and efficiency	\$1,395
---	---------

---

TRANSMISSION, 10-SPEED AUTOMATIC, ELECTRONICALLY CONTROLLED with overdrive and tow/haul mode. Includes Cruise Grade Braking and Powertrain Grade Braking	
---	--

---

ADVANCED TRAILERING PACKAGE includes (PZ8) Hitch Guidance with hitch view, (U1D) Advanced Trailering System and (PTT) Trailer Tire Pressure Monitor System	\$240
---	-------

---

BOSE SOUND SYSTEM, PREMIUM 7-SPEAKER SYSTEM with Richbass woofer	
---	--

---

CONVENIENCE PACKAGE includes (CJ2) dual-zone automatic climate control, (A2X) 10-way power driver seat including power lumbar, (KA1) heated driver and passenger seats, (NP5) leather-wrapped steering wheel, (KI3) heated steering wheel and (N37) manual tilt/telescoping steering column	\$1,285
--	---------

---

LICENSE PLATE KIT, FRONT	
--------------------------	--

---

TRAILERING PACKAGE includes trailer hitch, 7-pin and 4-pin connectors and (CTT) Hitch Guidance	\$395
---	-------

---

USB PORTS (INSIDE CONSOLE WITH BUCKET SEATS), 2 also includes 1 SD card reader and auxiliary jack	
--	--

- in bank on left side of steering wheel
- Mirror caps, painted (High gloss Black.)
- Mirrors, outside heated power-adjustable (When (PQB) Safety Package is ordered, includes Perimeter Lighting.)
- Tailgate and bed rail protection cap, top
- Tailgate, gate function manual with EZ Lift, includes power lock and release
- Taillamps, LED with signature
- Tire carrier lock, keyed cylinder lock that utilizes same key as ignition and door
- Wheel, 17" x 8" (43.2 cm x 20.3 cm) full-size, steel spare

## Safety

- Defogger, rear-window electric- Door locks, power- Keyless Open and Start
- Power outlet, front auxiliary, 12-volt- Power outlet, rear auxiliary, 12-volt
- Seat, rear 60/40 folding bench (folds up), 3-passenger (includes child seat top tether anchor)
- Seats, front 40/20/40 split-bench with covered armrest storage and under-seat storage (lockable) (Not available with (PCH) Convenience Package with Bucket Seats.)
- Window, power front, passenger express down- Windows, power rear, express down
- Air conditioning, single-zone manual, semi-automatic- Air vents, rear, heating/cooling
- Assist handles front A-pillar mounted for driver and passenger, rear B-pillar mounted
- Compass located in instrument cluster
- Cruise control, electronic with set and resume speed, steering wheel-mounted
- Driver Information Center, 4.2" diagonal color display includes driver personalization
- Exterior Temperature Display located in radio display
- Floor covering, color-keyed carpeting
- Floor mats, rubberized vinyl rear (Deleted when LPO floor liners are ordered.)
- Floor mats, rubberized vinyl, front (Deleted when LPO floor liners are ordered.)
- Instrument cluster, 6-gauge cluster featuring speedometer, fuel level, engine temperature, tachometer, voltage and oil pressure
- Mirror, inside rearview, manual tilt- Rear Seat Reminder- Remote vehicle starter system
- Seat adjuster, driver 4-way manual- Seat adjuster, passenger 4-way manual
- Seat trim, Cloth
- Steering column, Tilt-Wheel, manual with wheel locking security feature
- Steering column, lock control, electrical- Steering wheel audio controls
- Steering wheel, urethane- Theft-deterrent system, unauthorized entry
- USB ports, dual, charge-only (2nd row)- Window, power front, drivers express up/down

## Mechanical

- Engine, 2.7L Turbo (310 hp [231 kW] @ 5600 rpm, 348 lb-ft of torque [471 Nm] @ 1500 rpm) (Not available with (Z71) Z71 Off-Road Package.)
- Alternator, 220 amps (Included and only available with (L3B) 2.7L Turbo engine, (LM2) Duramax 3.0L Turbo-Diesel I6 engine or (NHT) Max Trailering Package.)
- Automatic Stop/Start
- Battery, heavy-duty 730 cold-cranking amps/80 Amp-hr, maintenance-free with rundown protection and retained accessory power (Included and only available with (L3B) 2.7L Turbo engine or (L84) 5.3L EcoTec3 V8 engine.)
- Brake lining wear indicator
- Brakes, 4-wheel antilock, 4-wheel disc with DURALIFE rotors- Capless Fuel Fill
- Durabed, pickup bed- Exhaust, single outlet- Four wheel drive
- Frame, fully-boxed, hydroformed front section
- GVWR, 7000 lbs. (3175 kg) (Requires Crew Cab or Double Cab 4WD model and (L3B) 2.7L Turbo engine.)
- Rear axle, 3.42 ratio (Included with (L84) 5.3L EcoTec3 V8 engine and (NHT) Max Trailering Package.)
- Steering, Electric Power Steering (EPS) assist, rack-and-pinion
- Transfer case, single speed electronic Autotrac with rotary dial control (4WD models only)
- Transmission, 8-speed automatic, electronically controlled with overdrive and tow/haul mode. Includes Cruise Grade Braking and Powertrain Grade Braking

## Z71 OFF-ROAD AND PROTECTION PACKAGE

includes (Z71) Z71 Off-Road suspension, (JHD) Hill Descent Control, (NZZ) skid plates, (K47) high-capacity air filter and Z71 hard badge **\$2,930**

## SHADOW GRAY METALLIC

## STANDARD PAINT

## RST PREFERRED EQUIPMENT GROUP

includes standard equipment

## AUDIO SYSTEM, CHEVROLET INFOTAINMENT 3 PLUS SYSTEM

8" diagonal HD color touchscreen, AM/FM stereo, Bluetooth audio streaming for 2 active devices, Apple CarPlay and Android Auto capable, voice recognition, in-vehicle apps, cloud connected personalization for select infotainment and vehicle settings. Dealer upgradeable to embedded navigation. Subscription required for enhanced and connected services after trial period.

## JET BLACK, CLOTH SEAT TRIM

## Option Packages Total

**\$6,245**

Auto Depot of Calexico

Auto Depot of Calexico

View this car on our website at [autodepotcalexico.com/6880226](http://autodepotcalexico.com/6880226)

Website: [autodepotcalexico.com](http://autodepotcalexico.com)

Phone: 760-357-0043

Map: 747 Imperial Ave, Calexico, CA 92231

