

2008 Chevrolet Corvette Z06 Fully Built 454 LSx over \$40k Invested

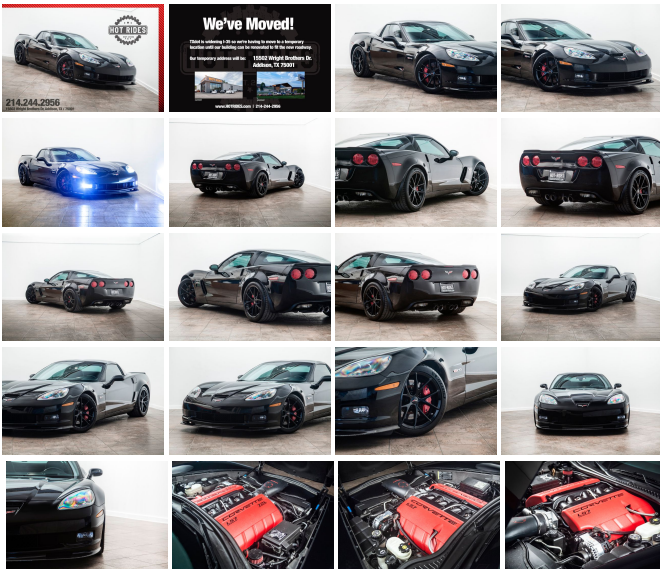
View this car on our website at texashotrides.com/6879769/ebrochure



Our Price **\$39,991**

Specifications:

Year:	2008
VIN:	1G1YY26E585106851
Make:	Chevrolet
Stock:	1020454
Model/Trim:	Corvette Z06 Fully Built 454 LSx over \$40k Invested
Condition:	Pre-Owned
Body:	Coupe
Exterior:	Black
Engine:	ENGINE, 7.0L (427 CI) LS7 V8 SFI
Interior:	Black Leather
Transmission:	TRANSMISSION, 6-SPEED MANUAL, SHORT-THROW
Mileage:	35,211
Drivetrain:	Rear Wheel Drive
Economy:	City 15 / Highway 24



2008 CHEVROLET CORVETTE Z06 IN BEAUTIFUL BLACK!

When you think of a true American muscle car the first thing that comes to mind is the Chevrolet Corvette. With heritage dating back to 1953 and an unbreakable reputation for luxury and power the Corvette is truly a one of a kind sports car that is sure to please anyone and is respected in every aspect of the automobile world. Sleek looks and jaw-dropping performance; this Corvette doesn't fall short in any category!

THIS Z06 IS TRULY ONE OF A KIND! YOU WILL NOT FIND ANOTHER LIKE IT!

WE FINANCE!

BEAUTIFUL GLOSSY BLACK EXTERIOR

LUXURIOUS BLACK LEATHER INTERIOR

POWERFUL V8 ENGINE

SMOOTH 6-SPEED MANUAL TR6060 TRANSMISSION

CLEAN CARFAX, NO ACCIDENTS

2LZ PACKAGE

HEATED SEATS

HEADS UP DISPLAY

LOW MILES!

OVER \$40K INVESTED IN UPGRADES (SEE BELOW!)

EXCELLENT FINANCING OPTIONS AVAILABLE!

MODIFICATIONS INCLUDE:

HPR (HORSEPOWER RESEARCH)

ALUMINUM 454ci LSx ENGINE

DARTON SLEEVES

ARP MAIN STUDS

CALLIES COMPSTAR FORGED STEEL

CRANKSHAFT

HPR SPEC FORGED PISTONS BY WISECO

HPR SPEC UPGRADED PISTON RINGS

HPR SPEC FORGED CONNECTING RODS

IMPROVED RACING CRANKSHAFT

SCRAPER

IMPROVED RACING WINDAGE TRAY

IMPROVED RACING WINDAGE TRAY
KATECH "RED" HIGH FLOW OIL PUMP
PAT-G CUSTOM SPEC'D CAMSHAFT
PACKAGE
TRICKFLOW GEN-X "260" CYLINDER HEADS
(PORTED, POLISHED, & SETUP BY MAMO
MOTORSPORTS)
JOHNSON LS7 LIFTERS
COMP HARDENED PUSHRODS
COMP CAMS BSR ROCKER ARMS
HALLTECH COLD AIR INTAKE
NICK WILLIAMS POLISHED 102mm
THROTTLE BODY
MSD ATOMIC INTAKE MANIFOLD PORTED
BY MAMO MOTORSPORTS
AMERICAN RACING STAINLESS STEEL
LONGTUBE HEADERS
AMERICAN RACING OFF-ROAD MID-PIPE
MILD-2-WILD EXHAUST NPP CONTROLLER
ATI HARMONIC BALANCER
ARP PRO SERIES HARMONIC BALANCER
BOLT
PERFORMANCE TUNING BY PAT-G
MIGHTY MOUSE OIL CATCH CAN W/
BREATHER
DEWITTS ALUMINUM RADIATOR W/
UPGRADED FAN
LINGENFELTER 160 DEGREE THERMOSTAT
MANTIC 9000 CERAMETALLIC TWIN DISC
PERFORMANCE CLUTCH
MANTIC 9000 LIGHTWEIGHT FLYWHEEL
MANTIC STAINLESS STEEL REMOTE
CLUTCH BLEEDER
HINSON PERFORMANCE MOTOR MOUNTS
MECHMAN HIGH OUTPUT ALTERNATOR IN
POLISHED FINISH

LOWERED ON STOCK BOLTS

OEM "SPIDER WHEELS" FINISHED IN
GLOSS BLACK

LIKE NEW MICHELIN PILOT SPORT 4S
TIRES ALL AROUND

PERFORMANCE AFX SLOTTED BRAKE
ROTORS (FRONTS ARE 2-PIECE)

BOBCAT 1521 SINGLE PERFORMANCE
BRAKE PADS

C6 ZR1 STYLE CARBON FIBER FRONT CHIN
SPLITTER

C6 ZR1 FASCIA BRACE

ZR1 CARBON FIBER REAR SPOILER

INTERIOR FULLY EQUIPPED WITH SOUND
DEADENING, VIBRATION DAMPENING, &
INSULATION

DOWN SOUTH VETTES CENTER CONSOLE
COVER

DOWN SOUTH VETTES E-BRAKE HANDLE &
BOOT

DOWN SOUTH VETTES SHIFTER BOOT

DOWN SOUTH VETTES CARBON FIBER
SHIFT KNOB

CARBON FIBER CUPHOLDER COVER

PASSENGER SEAT LOWER FIRE
EXTIGUISHER

UPGRADED AUDIO SYSTEM

KENWOOD DUAL DIN TOUCHSCREEN
HEAD UNIT WITH BLUETOOTH PHONE &
AUDIO

IMAGE DYNAMICS UPGRADED FRONT &
REAR SPEAKERS

TRUNK "STEALTH BOX" SUB ENCLOSURE

IMAGE DYNAMICS 12" SUBWOOFER

CUSTOM AMP ENCLOSURE (LEATHER
WRAPPED BOX) WITH VENTING FANS

HARD WIRED PASSPORT 9500 RADAR
DETECTOR INCLUDED

TINTED WINDOWS

CAR COVER INCLUDED

+MUCH MORE!!!

Contact our sales
team at:
214-244-2956

HOURS OF OPERATION:

Monday - Friday 10am - 6pm C.S.T

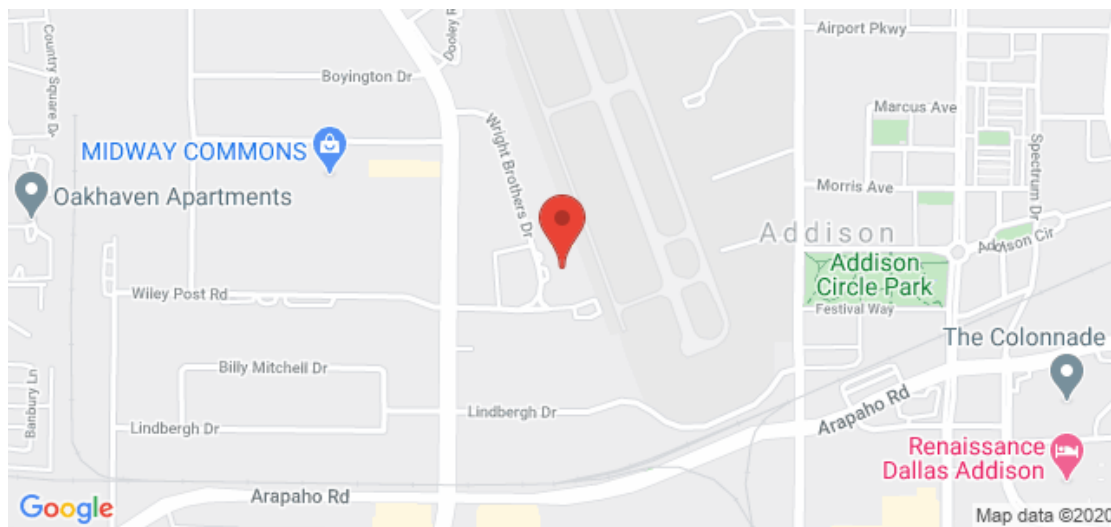
Saturday: By appointment, 10-4

As always, we welcome third party inspections! We offer finance options, We take trade-ins, free airport pick up, world-wide shipping, extended warranties, installation of additional desired items, and MUCH MORE! We are a full service dealership.

2008 Chevrolet Corvette Z06 Fully Built 454 LSx over \$40k Invested

Texas Hot Rides - 214-244-2956 - View this car on our website at texashotrides.com/6879769/ebrochure

Our Location :



2008 Chevrolet Corvette Z06 Fully Built 454 LSx over \$40k Invested
Texas Hot Rides - 214-244-2956 - View this car on our website at texashotrides.com/6879769/ebrochure

Installed Options

Interior

- Air conditioning, dual-zone automatic climate control with individual climate settings for driver and right-front passenger and outside temperature display
- Air filtration system with pollen filter
- Console, floor, 2 covered cup holders, ashtray with cigar lighter, auxiliary power outlet and CD storage
- Cruise control, electronic with set and resume speed - Defogger, rear-window, electric
- Door locks, power programmable with lockout protection- Floor mats, carpeted
- Hatch release, push button open
- Head-Up Display with dot-matrix readouts for street mode, track mode with g-meter, vehicle speed, engine rpm and readings from key gauges including water temperature and oil pressure
- Instrumentation, electronic analog with Driver Information Center and 2-line display
- Keyless Access, with push button start and 2 remote transmitters that enable automatic door unlock and open by touching door switch
- Lighting, interior with courtesy, cargo and glovebox
- Mirror, inside rearview auto-dimming with compass, includes dual reading lights
- Oil life monitoring system- Seat adjuster, driver 6-way power
- Seats, front bucket with perforated leather seating surfaces Z06 embroidery and contrasting stitching
- Steering column, Tilt-Wheel, manual- Steering wheel, 3-spoke leather-wrapped
- Storage, with lockable glovebox, center console and 2 rear compartments with covers (One compartment contains battery on Z06.)
- Theft-deterrent system, vehicle, push button start, immobilizer and audible visual alarm
- Visors, driver and front passenger illuminated vanity mirrors
- Windows, power with driver and passenger Express-Down

Exterior

- Fog lamps, front, integral in front fascia- Glass, Solar-Ray light-tinted
- Headlamps, dual projector lamps, Xenon, High-Intensity Discharge (HID) low-beam, tunasten-halocen high-beam with automatic exterior lamp control

- Mirrors, outside heated power-adjustable and driver-side auto-dimming, body- color
- Tires, front P275/35ZR18 Eagle F1 Supercar, extended mobility
- Tires, rear P325/30ZR19 Eagle F1 Supercar, extended mobility
- Wheels, Z06 Silver-painted aluminum 18" x 9.5" (45.7 cm x 24.1 cm) front and 19" x 12" (48.3 cm x 30.48 cm) rear
- Wipers, front intermittent

Safety

- Air conditioning, dual-zone automatic climate control with individual climate settings for driver and right-front passenger and outside temperature display
- Air filtration system with pollen filter
- Console, floor, 2 covered cup holders, ashtray with cigar lighter, auxiliary power outlet and CD storage
- Cruise control, electronic with set and resume speed - Defogger, rear-window, electric
- Door locks, power programmable with lockout protection- Floor mats, carpeted
- Hatch release, push button open
- Head-Up Display with dot-matrix readouts for street mode, track mode with g-meter, vehicle speed, engine rpm and readings from key gauges including water temperature and oil pressure
- Instrumentation, electronic analog with Driver Information Center and 2-line display
- Keyless Access, with push button start and 2 remote transmitters that enable automatic door unlock and open by touching door switch
- Lighting, interior with courtesy, cargo and glovebox
- Mirror, inside rearview auto-dimming with compass, includes dual reading lights
- Oil life monitoring system- Seat adjuster, driver 6-way power
- Seats, front bucket with perforated leather seating surfaces Z06 embroidery and contrasting stitching
- Steering column, Tilt-Wheel, manual- Steering wheel, 3-spoke leather-wrapped
- Storage, with lockable glovebox, center console and 2 rear compartments with covers (One compartment contains battery on Z06.)
- Theft-deterrent system, vehicle, push button start, immobilizer and audible visual alarm
- Visors, driver and front passenger illuminated vanity mirrors
- Windows, power with driver and passenger Express-Down

Mechanical

- Active handling, improves traction and enhances vehicle stability
- Engine access, rear-opening hood
- Engine, 7.0L (427 Ci) LS7 V8 SFI with dry sump oil system (505 hp [376.6 kW] @ 6300 rpm, 470 lb-ft of torque [634.5 N-m] @ 4800 rpm)
- Exhaust, dual-mode aluminized stainless-steel with 4" polished stainless- steel tips
- Rear axle, 3.42 ratio, limited slip- Rear wheel drive
- Steering, power, speed-sensitive, rack-and-pinion
- Transmission, 6-speed manual, short-throw (Includes (GU6) 3.42 axle ratio.)
- Z06 Performance Package, 4-wheel independent, includes transverse composite springs, power steering, engine oil, axle and transmission coolers, stiffer springs and stabilizer bars, specific shock absorbers, larger brakes with 6- piston front and 4-piston rear cross-drilled rotors and specific tires

Option Packages

Factory Installed Packages

ENGINE, 7.0L (427 Ci) LS7 V8 SFI
with dry sump oil system (505 hp
[376.6 kW] @ 6300 rpm, 470
lb-ft of torque [634.5 N-m] @
4800 rpm)

TRANSMISSION, 6-SPEED MANUAL,
SHORT-THROW
(Includes (GU6) 3.42 axle ratio.)

BLACK

PREFERRED EQUIPMENT GROUP
includes (AJ7) Air bags, frontal
and side-impact, (US9) Audio
system, AM/FM stereo with 6-
disc, in-dash CD changer and
MP3 playback, (UK3) Steering
wheel controls, mounted audio
controls, Enhanced Acoustic

\$3,045

Package, Cargo net, in rear compartment area, (D42)
Luggage shade, (AAB)
Memory Package, (KA1)
Seats, heated driver and front passenger, (N37) Steering column, power telescopic with manual tilt, (UG1) Universal Home Remote

- _____
EBONY, LEATHER SEATING SURFACES

- _____
Option Packages Total
\$3,045

Texas Hot Rides

texashotrides.com

214-244-2956

15502 Wright Brothers Dr

Addison, TX 75001

© 2020 AutoRevo - All rights reserved. - Powered by AutoRevo