

# 2012 RAM 2500 CUMMINS DIESEL RCAB 6-SPEED MANUAL 4X4 ONLY 47K MILES LIFTED

View this car on our website at [njtruckking.com/6876698/ebrochure](http://njtruckking.com/6876698/ebrochure)



Our Price **\$39,900**

## Specifications:

<b>Year:</b>	2012
<b>VIN:</b>	3C6LD5AL2CG195789
<b>Make:</b>	RAM 2500 CUMMINS DIESEL
<b>Model/Trim:</b>	RCAB 6-SPEED MANUAL 4X4 ONLY 47K MILES LIFTED
<b>Condition:</b>	Pre-Owned
<b>Body:</b>	Pickup Truck
<b>Exterior:</b>	Green
<b>Engine:</b>	6.7L I6 CUMMINS TURBO DIESEL ENGINE
<b>Interior:</b>	Gray
<b>Transmission:</b>	6-SPEED MANUAL TRANSMISSION W/OD
<b>Mileage:</b>	47,017
<b>Drivetrain:</b>	4 Wheel Drive

6-SPEED MANUAL RCAB CUMMINS!

2012 RAM 2500 SRW 4X4

6.7L CUMMINS TURBO DIESEL

~PRE-DEF~

6-SPEED MANUAL TRANSMISSION

( ONLY 47,071 ORIGINAL / ACTUAL MILES )

RARE COLOR!

EXCELLENT CONDITION

NO ACCIDENTS !

RUNS AND DRIVES 100%

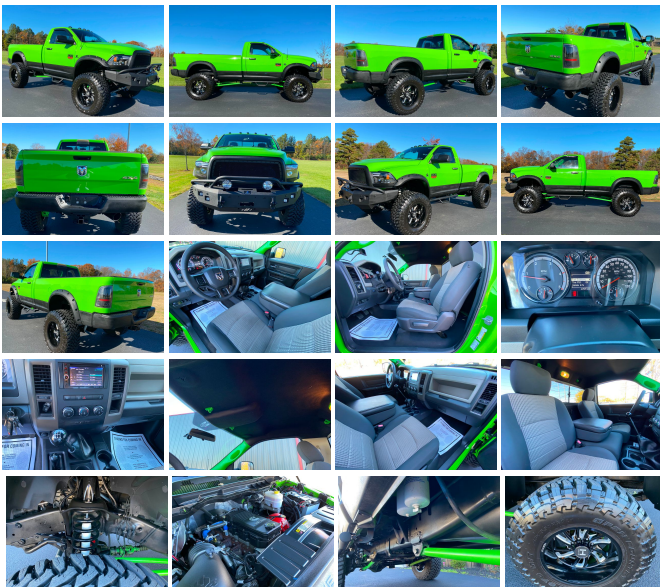
40" TOYO TIRES

20" HOSTILE WHEELS

PRO COMP LIFT KIT

CUSTOM FRONT BUMPER

LIGHT PODS



STEP BARS  
DUAL STEERING STABILIZER  
FENDER FLARES  
EXHAUST & MORE  
ALWAYS SERVICED AND DETAILED  
EXCELLENT CONDITION  
UNDERCARRIAGE EXCELLENT  
RUNS AND DRIVES EXCELLENT  
RARE TRUCK!!  
WILL NOT LAST!  
DON'T SNOOZE AND LOSE THIS ONE !

\$39,900

CALL / TEXT ROB 856-381-6621 WITH ANY QUESTIONS

---

2012 RAM 2500 CUMMINS DIESEL RCAB 6-SPEED MANUAL 4X4 ONLY 47K MILES LIFTED  
King of Cars and Trucks - 856-693-3181 - View this car on our website at [njtrucking.com/6876698/ebrochure](http://njtrucking.com/6876698/ebrochure)

**Our Location :**



---

2012 RAM 2500 CUMMINS DIESEL RCAB 6-SPEED MANUAL 4X4 ONLY 47K MILES LIFTED  
King of Cars and Trucks - 856-693-3181 - View this car on our website at [njtrucking.com/6876698/ebrochure](http://njtrucking.com/6876698/ebrochure)

## Installed Options

### Interior

- HD vinyl 40/20/40 split bench seat - 120-MPH primary speedometer- 12V pwr outlet
- 4-spoke steering wheel- Air conditioning- Behind seat storage bin
- Black instrument panel bezel- Black vinyl floor covering- Driver/passenger assist handles
- Dual visors- Instrument cluster w/display screen- Mini floor console- Pwr accessory delay
- Rear dome lamp- Rearview day/night mirror- Sentry Key theft deterrent system
- Speed control- Tilt steering column- Vehicle info center

### Exterior

- 17" x 7.5" steel styled wheels - Full size spare tire- LT245/70R17E all-season BSW tires
- 17" steel spare wheel- 6" x 9" manual mirrors -inc: black mirror caps
- Automatic headlamps- Black door handles- Black front bumper- Black grille
- Black rear bumper- Body color fuel filler door- Body color headlamp filler panel
- Cargo lamp- Center hub- Fixed rear window- Front air dam- Front bumper sight shields
- Front license plate bracket- Locking tailgate- Quad halogen headlamps- Tinted glass
- Variable speed intermittent windshield wipers- Vendor painted cargo box tracking
- Winch-type tire carrier

### Safety

- HD vinyl 40/20/40 split bench seat - 120-MPH primary speedometer- 12V pwr outlet
- 4-spoke steering wheel- Air conditioning- Behind seat storage bin
- Black instrument panel bezel- Black vinyl floor covering- Driver/passenger assist handles
- Dual visors- Instrument cluster w/display screen- Mini floor console- Pwr accessory delay
- Rear dome lamp- Rearview day/night mirror- Sentry Key theft deterrent system
- Speed control- Tilt steering column- Vehicle info center

### Mechanical

- 5.7L SMPI V8 Hemi engine w/variable valve timing
- 6-speed automatic transmission w/OD (REQ: EZC Engine) - Four-wheel drive
- Manual shift-on-the-fly transfer case- 10.5" rear axle ring gear diameter
- 160-amp alternator- 3.73 axle ratio- 5500# front axle- 7-pin wiring harness
- 730-amp maintenance-free battery- 8' pickup box- 8650# GVWR- Class IV receiver hitch
- Conventional front axle- Conventional rear axle- Electronically controlled throttle
- Front stabilizer bar- HD engine cooling- HD front shock absorbers
- HD rear shock absorbers- Next generation engine controller
- Pwr 4-wheel anti-lock disc brakes- Pwr steering- Tip start
- Trailer tow wiring w/4-pin connector- Transmission oil cooler

## Option Packages

### Factory Installed Packages

#### 6.7L I6 CUMMINS TURBO DIESEL ENGINE

- inc: 11.50 rear axle, Cummins turbo diesel badge, current generation engine controller, diesel exhaust brake, electronically controlled throttle, front bumper sight shields, 9000# GVWR, tow hooks

\$7,795

#### 6-SPEED MANUAL TRANSMISSION W/OD

- inc: 3.42 rear axle ratio, mini floor console

### Option Packages Total

\$7,795

King of Cars and Trucks

[njtruckking.com](http://njtruckking.com)

856-693-3181

1229 Broadway

Westville, New Jersey 08093

© 2024 AutoRevo - All rights reserved. - Powered by AutoRevo