



2018 Mazda MX-5 Miata RF Grand Touring

Our Price \$23,483

Retail Value \$25,660

View this vehicle on our website at altx.com

Auto Locators of Texas

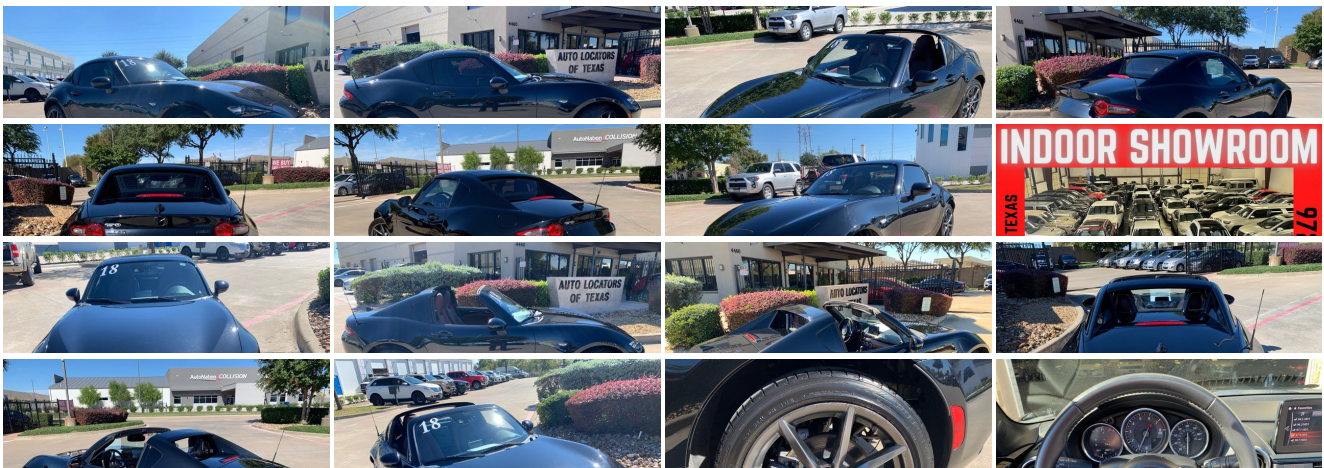
(972) 612-3100

4460 Tradition Trail , Plano, TX 75093

Photos

Details

Contact





Specifications:

| | |
|----------------------|--|
| Year: | 2018 |
| VIN: | JM1NDAM7XJ0206127 |
| Make: | Mazda |
| Stock: | 3237 |
| Model/Trim: | MX-5 Miata RF Grand Touring |
| Condition: | Pre-Owned |
| Body: | Convertible |
| Exterior: | Jet Black Mica |
| Engine: | Engine: 2.0L SKYACTIV-G DOHC 16-Valve I4 VVT |
| Interior: | Auburn Leather |
| Transmission: | AUTOMATIC |
| Mileage: | 27,998 |
| Drivetrain: | Rear Wheel Drive |
| Economy: | City 26 / Highway 35 |

Vehicle Description

Just listed 2018 MAZDA MX-5 MIATA GRAND TOURING CONVERTIBLE with HEATED SEATS, NAVIGATION and ONLY 27,000 MILES! Buy this LOADED MIATA with confidence since this Mazda is a CARFAX CERTIFIED VEHICLE! Sporty black exterior with saddle tan LEATHER interior.

Drop the top and enjoy this sporty ride on those perfect nights. Equipped with HEATED SEATS for those cold winter mornings. Never get lost with your in dash GPS NAVIGATION unit. Loaded with upgraded stereo, hard top, Xenon headlights, window tint, push Button start, PREMIUM PACKAGE, SUSPENSION PACKAGE, Limited slip differential, LEATHER, power windows, power locks, keyless entry with alarm and freezing cold AC. Bluetooth for your safety. To many options to list. This LUXURY SPORTY CONVERTIBLE is in great condition inside and out. DID WE MENTION ONLY 27,000 MILES! Just serviced with new fluids and ready to go. Drive in luxury and style with all the bells and whistles. This "LOADED" Miata is wholesale priced below book so do not wait. It will not last! Do you want your next car buying experience to be an enjoyable and a memorable one? After 22 years in business, we've streamlined the buying process to be completely hassle and stress free. Why wait? We can have you in and out in as little as 45 minutes from the time you step into the dealership to the time you drive away in your new vehicle. Our customers great reviews have a common theme, great prices, quality vehicles and an efficient no hassle environment. Just look on Yelp and Google to read what our 10,000 plus happy customers are saying about Auto Locators of Texas! Auto Locators of Texas has been in business for over 22 years, and we pride ourselves on our friendly, no-pressure approach to selling vehicles. We offer a wide selection of the highest quality used cars, trucks, and SUV's. Our finance department works hard to find every customer the best deal. Trade-ins are always welcome so we can answer your question of "what is my trade worth". We offer a wide variety of services from detailing, ding repair, body shop, service, and extended service contracts. Please take a look at our website at www.alltx.com. We hope to see you soon! WE HOPE TO SEE YOU SOON!

Installed Options

Interior

- FOB Controls -inc: Cargo Access and Windows
- Full Carpet Floor Covering -inc: Carpet Front Floor Mats
- Gauges -inc: Speedometer, Odometer, Engine Coolant Temp, Tachometer, Trip Odometer and Trip Computer
- Leather Upholstery- Power Door Locks w/Autolock Feature
- Proximity Key For Doors And Push Button Start
- Remote Keyless Entry w/Integrated Key Transmitter, Illuminated Entry, Illuminated Ignition Switch and Panic Button
- Trip Computer- 1 12V DC Power Outlet- 2-Way Driver Seat -inc: Manual Cushion Tilt
- Air Filtration- Analog Display- Automatic Air Conditioning
- Cargo Features -inc: Spare Tire Mobility Kit- Cargo Space Lights- Carpet Floor Trim
- Cruise Control w/Steering Wheel Controls- Day-Night Auto-Dimming Rearview Mirror
- Driver And Passenger Visor Vanity Mirrors- Driver Foot Rest- Engine Immobilizer
- Fade-To-Off Interior Lighting- Front Center Armrest- Front Cupholder
- Full Cloth Headliner- Full Floor Console w/Covered Storage and 1 12V DC Power Outlet
- HomeLink Garage Door Transmitter
- Instrument Panel Bin and Locking Interior Concealed Storage
- Interior Trim -inc: Body-Colored Door Panel Insert and Chrome/Metal-Look Interior

Option Packages

Factory Installed Packages

| | |
|-------------------------------------|--------------|
| ["NAPPA LEATHER UPHOLSTERY CHARGE"] | \$300 |
| ["JET BLACK MICA"] | |
| ["SPORT TAN, LEATHER UPHOLSTERY"] | |
| Option Packages Total | \$300 |

- Interior Trim -inc: Body-Colored Door Panel Insert and Chrome/Metal-Look Interior Accents
- Leather Gear Shifter Material- Leatherette Door Trim Insert
- MAZDA CONNECT Selective Service Internet Access- Manual Tilt Steering Column
- Outside Temp Gauge- Passenger Seat- Perimeter Alarm
- Power 1st Row Windows w/Driver And Passenger 1-Touch Down
- Power Fuel Flap Locking Type
- Reclining Heated Front Bucket Seats -inc: 3 heat settings, forward/back slide feature, driver's seat front tilt, passenger back panel covered storage and integrated headrests
- Remote Releases -Inc: Power Cargo Access- Seats w/Leatherette Back Material
- Sport Leather/Metal-Look Steering Wheel- Systems Monitor

Exterior

- Black Grille
- Black Side Windows Trim, Black Front Windshield Trim and Black Rear Window Trim
- Body-Colored Door Handles- Body-Colored Front Bumper
- Body-Colored Power Heated Side Mirrors w/Driver Auto Dimming and Manual Folding
- Body-Colored Rear Bumper- Clearcoat Paint
- Fully Automatic Projector Beam Led Low/High Beam Auto-Leveling Directionally Adaptive Auto High-Beam Daytime Running Lights Preference Setting Headlamps w/Delay-Off
- Galvanized Steel/Aluminum Panels- LED Brakelights- Light Tinted Glass
- Power Convertible Retractable Hard Top w/Lining, Glass Rear Window and Windblocker Fixed Wind Blocker
- Power Rear Window w/Defroster- Rain Detecting Variable Intermittent Wipers
- Spare Tire Mobility Kit- Tires: P205/45R17 High-Performance Summer
- Trunk Rear Cargo Access- Wheels: 17" x 7" Dark Silver Aluminum Alloy

Safety

- FOB Controls -inc: Cargo Access and Windows
- Full Carpet Floor Covering -inc: Carpet Front Floor Mats
- Gauges -inc: Speedometer, Odometer, Engine Coolant Temp, Tachometer, Trip Odometer and Trip Computer
- Leather Upholstery- Power Door Locks w/Autolock Feature
- Proximity Key For Doors And Push Button Start
- Remote Keyless Entry w/Integrated Key Transmitter, Illuminated Entry, Illuminated Ignition Switch and Panic Button
- Trip Computer- 1 12V DC Power Outlet- 2-Way Driver Seat -inc: Manual Cushion Tilt
- Air Filtration- Analog Display- Automatic Air Conditioning
- Cargo Features -inc: Spare Tire Mobility Kit- Cargo Space Lights- Carpet Floor Trim
- Cruise Control w/Steering Wheel Controls- Day-Night Auto-Dimming Rearview Mirror
- Driver And Passenger Visor Vanity Mirrors- Driver Foot Rest- Engine Immobilizer
- Fade-To-Off Interior Lighting- Front Center Armrest- Front Cupholder
- Full Cloth Headliner- Full Floor Console w/Covered Storage and 1 12V DC Power Outlet
- HomeLink Garage Door Transmitter
- Instrument Panel Bin and Locking Interior Concealed Storage
- Interior Trim -inc: Body-Colored Door Panel Insert and Chrome/Metal-Look Interior Accents
- Leather Gear Shifter Material- Leatherette Door Trim Insert
- MAZDA CONNECT Selective Service Internet Access- Manual Tilt Steering Column
- Outside Temp Gauge- Passenger Seat- Perimeter Alarm
- Power 1st Row Windows w/Driver And Passenger 1-Touch Down
- Power Fuel Flap Locking Type
- Reclining Heated Front Bucket Seats -inc: 3 heat settings, forward/back slide feature, driver's seat front tilt, passenger back panel covered storage and integrated headrests
- Remote Releases -Inc: Power Cargo Access- Seats w/Leatherette Back Material
- Sport Leather/Metal-Look Steering Wheel- Systems Monitor

Mechanical

- 100 Amp Alternator- 11.9 Gal. Fuel Tank
- 4-Wheel Disc Brakes w/4-Wheel ABS, Front Vented Discs, Brake Assist and Hill Hold Control
- 45-Amp/Hr Maintenance-Free Battery
- Double Wishbone Front Suspension w/Coil Springs
- Electric Power-Assist Speed-Sensing Steering- Engine Oil Cooler
- Engine: 2.0L SKYACTIV-G DOHC 16-Valve I4 VVT- Front And Rear Anti-Roll Bars
- Gas-Pressurized Shock Absorbers- Multi-Link Rear Suspension w/Coil Springs
- Quasi-Dual Stainless Steel Exhaust w/Chrome Tailpipe Finisher- Rear-Wheel Drive
- Transmission: Electronic 6-Speed Sport Automatic -inc: steering-wheel mounted manual shift paddles, Axle Ratio: 3.45, Induction Sound Enhancer Delete

Auto Locators of Texas

Auto Locators of Texas

View this car on our website at alttx.com/6871303

Website: alttx.com

Phone: (972) 612-3100

Map: [4460 Tradition Trail, Plano, TX 75093](#)

