

2009 Ford Super Duty F-350 SRW XLT

View this car on our website at montanamotormall.com/6870565/ebrochure

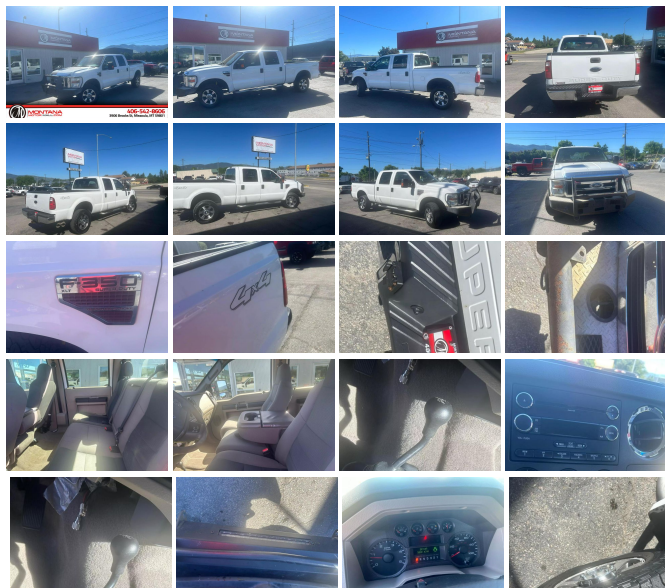


Our Price **\$15,995**

Specifications:

Year:	2009
VIN:	1FTWW31R19EA94249
Make:	Ford
Stock:	A94249
Model/Trim:	Super Duty F-350 SRW XLT
Condition:	Pre-Owned
Body:	Pickup Truck
Exterior:	White
Engine:	6.4L OHV V8 TURBO-DIESEL POWER STROKE ENGINE
Interior:	grey Cloth
Mileage:	231,884
Drivetrain:	4 Wheel Drive

Vehicle Runs Well, Smooth ride, Must test drive, Arctic cold a/c, Fully Loaded, Drives great



2009 Ford Super Duty F-350 SRW XLT

Montana Motor Mall - 406-542-8606 - View this car on our website at montanamotormall.com/6870565/ebrochure

Our Location :



2009 Ford Super Duty F-350 SRW XLT

Montana Motor Mall - 406-542-8606 - View this car on our website at montanamotormall.com/6870565/ebrochure

Installed Options

Interior

- Cloth 40/20/40 split bench seat - Driver manual lumbar support
- Front/rear color-keyed carpeted floor mats
- Pwr windows w/driver one-touch-down & backlit switches
- Pwr door locks w/backlit switches- Remote keyless entry & perimeter anti-theft alarm
- FlexFold 60/40 rear bench seat w/fold-flat feature, grocery hooks, dual cupholders, tray, steel load floor
- Color-keyed carpet full-floor covering- Color-keyed scuff plates- Tilt steering wheel
- Black instrumentation -inc: tachometer, speedometer, oil pressure, coolant temp, fuel gauge, indicator lights, message center w/odometer, trip odometer, engine hour meter, warning messages, voltmeter, distance-to-empty, average fuel economy
- Accessory delay- SecuriLock anti-theft ignition- Cruise control
- Air conditioning-inc: black vents w/chrome rings - (4) air registers w/positive shut-off
- Auxiliary pwr point- Dash-top tray- Glove box- Ashtray & cigar lighter
- Instrument panel mounted storage bin & trash bag hook
- Color-keyed door panel trim -inc: color-keyed soft armrest, pwr switch bezel, molded upper applique, upper & lower map pockets, grab handle & reflector
- Color-keyed cloth headliner- Front passenger-side roof ride handle
- Rear seating roof ride handles- Driver & passenger grab handles
- Rear seat LH/RH grab handles
- Dual color-keyed cloth sunvisors-inc: driver-side pocket, passenger-side mirror insert
- Front door operated dome lamp w/time delay off & IP switch - Front/rear map lamps
- Dual color-keyed coat hooks

Exterior

- (5) LT275/70R18E all-season BSW tires
- 18" chrome steel wheels w/bright center ornaments- Full-size spare tire w/lock & carrier
- Manual telescoping pwr heated trailer tow mirrors w/heated spotter mirror
- Rear privacy glass- Chrome front bumper w/glossy body-color top cover
- Chrome rear bumper- Black lower air dam- Front fender vents

Option Packages

Factory Installed Packages

6.4L OHV V8 TURBO-DIESEL POWER STROKE ENGINE	
-inc: 135-amp HD alternator, dual 750 CCA battery, turbo boost gauge, air filter minder	\$7,210
Option Packages Total	\$7,210

- Black box-rail & tailgate top-edge moldings
- Grille w/medium platinum insert & chrome surround - Dual beam jewel effect headlamps
- Pickup box/cargo lights- Underhood service light- Solar tinted glass
- Interval windshield wipers- Front license plate bracket- Rear license plate bracket
- Black door handles- Removable locking tailgate w/black handle & Tailgate Assist

Safety

- Cloth 40/20/40 split bench seat - Driver manual lumbar support
- Front/rear color-keyed carpeted floor mats
- Pwr windows w/driver one-touch-down & backlit switches
- Pwr door locks w/backlit switches- Remote keyless entry & perimeter anti-theft alarm
- FlexFold 60/40 rear bench seat w/fold-flat feature, grocery hooks, dual cupholders, tray, steel load floor
- Color-keyed carpet full-floor covering- Color-keyed scuff plates- Tilt steering wheel
- Black instrumentation -inc: tachometer, speedometer, oil pressure, coolant temp, fuel gauge, indicator lights, message center w/odometer, trip odometer, engine hour meter, warning messages, voltmeter, distance-to-empty, average fuel economy
- Accessory delay- SecuriLock anti-theft ignition- Cruise control
- Air conditioning-inc: black vents w/chrome rings - (4) air registers w/positive shut-off
- Auxiliary pwr point- Dash-top tray- Glove box- Ashtray & cigar lighter
- Instrument panel mounted storage bin & trash bag hook
- Color-keyed door panel trim -inc: color-keyed soft armrest, pwr switch bezel, molded upper applique, upper & lower map pockets, grab handle & reflector
- Color-keyed cloth headliner- Front passenger-side roof ride handle
- Rear seating roof ride handles- Driver & passenger grab handles
- Rear seat LH/RH grab handles
- Dual color-keyed cloth sunvisors-inc: driver-side pocket, passenger-side mirror insert
- Front door operated dome lamp w/time delay off & IP switch - Front/rear map lamps
- Dual color-keyed coat hooks

Mechanical

- 5.4L SOHC 24-valve EFI Triton V8 engine
- 6-speed manual transmission w/OD -inc: PTO provision (REQ: 995 or 99Y Engine)
- (2) front tow hooks- Pwr 4-wheel disc brakes w/vacuum boost
- 3.73 axle ratio (REQ: 995 Engine) - Stationary elevated engine idle control (SEIC)
- Manual transfer case & hubs- 4-wheel drive- 72 amp/hr (650 CCA) battery
- 157-amp HD alternator
- Trailer tow pkg-inc: 7-wire harness w/relays, 7/4 pin combination connector
- Class V trailer hitch receiver-inc: 2" hitch- Trailer brake controller
- 6-3/4' pickup box-inc: (4) tie-down hooks, partitionable & stackable storage
- Mono-beam front axle w/coil spring suspension- Rear auxiliary springs
- HD gas shock absorbers- Front stabilizer bar- Pwr steering w/steering damper
- 2-ton mechanical jack

Please understand, we do our professional best to describe in detail the condition of our vehicles, however, we are only human and these are used vehicles. Therefore, Montana Motor Mall, and its employees, will not be held accountable for errors or omissions in the description of the above vehicle or typographical errors in any of our vehicle listings. All vehicle options, specs, features, color descriptions, history, paint history, maintenance records and manufacturer's warranty information should be researched and confirmed by the buyer or third party service before completing the vehicle purchase. Helpful research information can be found at <http://www.edmunds.com/> Edminds.com http://www.autocheck.com/consumers/gatewayAction.do?siteID=0&WT.mc_id=0 AutoCheck.com <http://carchex.com/> carchex.com <http://carfax.com/> CarFax.com <http://www.motorship.com/Content/Assets/clients/79491a0c-c003-4850-9f4e-ad0331890586/uploads/634169562729291780.png> Note: Our listing software provider allows the VIN to decode the ORIGINAL FACTORY EQUIPMENT that this vehicle had when it rolled off the factory line. There may/may not be additional dealer equipment that was added by the original selling dealer that will not be listed in this section. There may/may not also have items listed as original factory equipment that are no longer with the

vehicle we are currently selling. For example: 2 sets of keys, keyless entry remotes, owner's manual, factory floor mats, Navigation discs, first aid kits, factory tires/size/load rating, etc. Please refer to the photos we have taken or ask us your specific concern to be certain there is no confusion. We will not be responsible for any discrepancies between the Original Factory Equipment section and what is presented in the photos or description. Please do not assume and allow us to put our answers to your specific concerns in writing. Montana Motor Mall is fully responsible for all content in this listing. Human error is possible and we reserve the right to reverse any sale based on pricing/listing error which can occur at any time without notice. All inventory is listed for sale locally, therefore all are subject to sale at any time and may not be available. Everyone is encouraged to call with questions or concerns.

Please understand, we do our very best to describe in detail the condition of our vehicles, however, we are only human and these are used vehicles, therefore, Montana Motor Mall, and their employees or agents will not be held accountable for errors or omissions in the description of the above vehicle or typographical errors in any of our vehicle listings. MONTANA MOTOR MALL MAKES EVERY EFFORT TO BE AS TRANSPARENT AS POSSIBLE WHEN OFFERING INFORMATION ABOUT THE INVENTORY ON OUR SITE. WE WILL DISCLOSE WHAT WE KNOW AND WHAT WE HAVE LEARNED REGARDING EACH VEHICLE, WHETHER IT IS PAINTWORK, PERFORMANCE ENHANCING EQUIPMENT OR ALTERED EXHAUST / EMISSIONS. WE DO NOT INSTALL ANY OF THIS TYPE OF EQUIPMENT, NOR DO WE TEST ITS PERFORMANCE. WE RECOMMEND AN INDEPENDENT INSPECTION BUT WE DO NOT REQUIRE YOU TO HAVE ONE DONE, HOWEVER WE WILL NOT BE HELD RESPONSIBLE FOR ANY FINDINGS AFTERWARDS SHOULD YOU CHOOSE TO DISCARD YOUR RIGHT TO HAVE ONE DONE. All vehicle options (power opts, cd players/changers, audio equipment, entertainment systems/dvd, navigation systems/nav dvd, etc), specs, features, color descriptions, history, paint history, maintenance records and manufacturer's warranty information should be researched and confirmed by the buyer or third party service before completing purchase. Helpful research information can be found at Edmunds.com, AutoCheck.com, carhex.com, CarFax.com, etc.

At our dealership we work very hard to accurately describe our vehicles through text descriptions and elaborate photos. We hand select each vehicle we put on eBay. The vehicle shown is ALWAYS the vehicle being sold. Please look over the photos carefully as they are part of the description. When you purchase any pre-owned vehicle it is not a new vehicle. Any pre-owned vehicle can/will have normal wear, which may include, but not limited to, rock chips, scratches, scuffs, and minor interior wear, our policy is to disclose anything beyond that and we encourage pre-purchase inspections. We encourage pre-purchase inspections. When fresh inventory arrives, we do our best to inspect all power options, DVD systems, audio equipment, NAV systems, etc., however AAB will not be held liable or responsible for any of these items. We will check for and disclose paint work found on any vehicle, but keep in mind - this is an imperfect science. Please bear in mind that often truck owners may choose to alter factory emissions and/or exhaust to enhance performance or fuel economy. We often do acquire trucks that have these performance enhancing equipment already installed. This equipment may alter original emissions equipment or void factory warranties. We do not test or alter this equipment. If this is a concern of yours, please exercise your right to have a pre-purchase inspection prior to leaving your deposit. Our sales staff is available to assist in answering any specific cosmetic questions and will gladly walk around a vehicle to give you a more accurate description.

BEFORE a deposit is left. Ultimately, it is up to the potential buyer to do their due diligence. **Montana Motor Mall does not want to hide anything and we encourage everyone to have a pre-buyer's inspection done before purchase.**

Montana Motor Mall
montanamotormall.com
406-542-8606
3906 Brooks St
Missoula, MT 59801

© 2024 AutoRevo - All rights reserved. - Powered by AutoRevo