

1989 Chevrolet Caprice 9C1 COPO 9C1 SEO 1 OF 1

Joe Petralia 623-580-1473

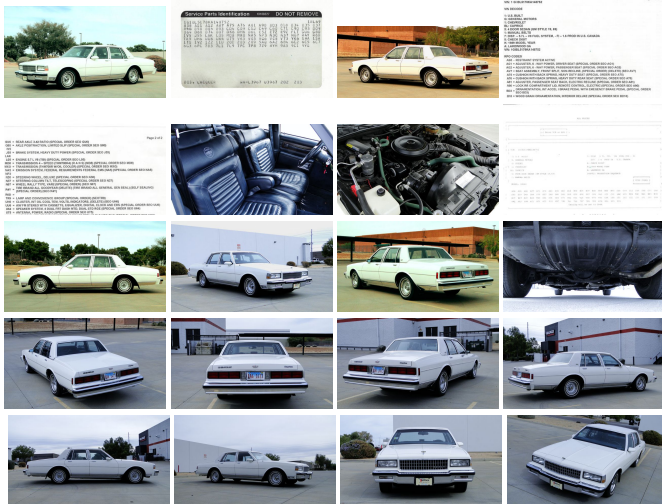
View this car on our website at rpmotorcars.com/6869760/ebrochure



SALE PRICED **\$11,900**

Specifications:

Year: 1989
VIN: 1G1BL5178KA148752
Make: Chevrolet
Stock: 1989COPO9C1
Model/Trim: Caprice 9C1 COPO 9C1 SEO 1 OF 1
Condition: Pre-Owned
Body: Sedan
Exterior: WHITE
Engine: 5.7 LITER
Interior: DARK SAPHIRE BLUE Leather
Transmission: 4 SPEED AUTO
Mileage: 45,000
Drivetrain: Rear Wheel Drive



1989 CHEVROLET CAPRICE COPO 9C1/SEO CAR, 5.7 LITER, 4 SPEED OVERDRIVE, THIS CAR HAS 141 FACTORY OPTIONS AND IS CONSIDERED ONE OF ONE!

BUILT ORIGINALLY FOR THE AUTO SHOW THIS WAS LOADED WITH EVERY ABOUT EVERY CONCEIVABLE OPTION AVAILABLE IN 89' INCLUDING THE 9C1 POLICE PACKAGE, BUT WITH POWER WINDOW DELETE, A UNICORN CAR FOR SURE, ALL OPTIONS DOCUMENTED WITH

PAPERWORK FROM
CHEVROLET.

CAR IS CONSIDERED A "SEO"
CAR WHICH STANDS FOR
"SPECIAL EQUIPMENT OPTIONS"
AND IS ALSO DOCUMENTED IN
THE OPTION ORDER LIST
INCLUDED. THIS CAR HAS SOME
ODDBALL OPTIONS YOU NEVER
EVEN SAW WHEN THESE CARS
WERE NEW SUCH AS RPO 1T1
SILICONE HEATING AND
COOLING HOSES, RPO 1Z2 HOT
MELT ANTI-
CORROSION PROTECTION, RPO
5AQ GENERAL "GEN-SEAL"
TIRES AND SO ON.

ORIGINAL SPARE NEVER ON
THE GROUND, SPECIAL TRIM IN
THE TRUNK, POWER TRUNK
RELEASE, CAR IS ALSO FITTED
WITH "QUIET-SOUND"
INSULATION FROM THE
FACTORY.

THE ONE THING YOU'LL NOTICE
RIGHT AWAY IS THE SPECIAL
INTERIOR FITTED TO THIS CAR,
IT IS BASICALLY THE SAME
INTERIOR YOU WOULD GET IN
THIS YR CADILLAC FLEETWOOD
BROUGHAM, ANOTHER REASON
THIS CAR WAS SPECIALLY
BUILT BUT NEVER USED FOR
THE AUTO SHOW BACK IN 89. IT
WAS SOLD NEW OUT OF
GATEWAY CHEVROLET.

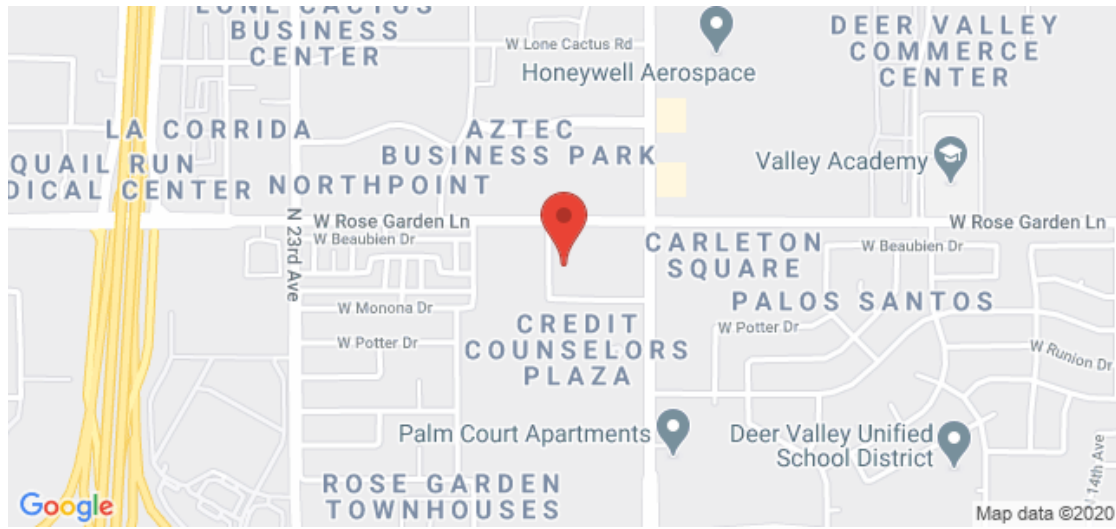
THE OPTIONS ON THIS CAR ARE AMAZING AND BEING A TRUE COPO 9C1 POLICE PACKAGE CAR WITH 141 RPO OPTIONS MAKES THIS CAR A TRUE UNICORN AND A ONE OF ONE CAR.

THIS CAR HAS ABSOLUTELY PERFECT PAINT, TRIM, CHROME INTERIOR, AND RUNS AND DRIVES LIKE NEW, TILT, TELESCOPIC STEERING, F41 SUSPENSION, 50/50 SPLIT DUAL POWER SEATS, REAR SEAT LIGHTS, SEAT BACK POCKETS ETC THE CAR HAS IT ALL AND WAS BUILT AS A STANDARD CAPRICE NOT A CLASSIC OR BROUGHAM, AN ODDBALL CAR FOR SURE, AND I CAN BET THIS IS THE BEST 89' 9C1 CAPRICE ON THE PLANET.

CAR NEEDS ABSOLUTELY NOTHING, DRIVE ANYWHERE ANY TIME WITHOUT QUESTION!

SOLD "AS IS", NO WARRANTY OR GUARANTEE EXPRESSED OR GIVEN, CARS BUILT PRIOR TO 1981 MILES CAN NOT BE VERIFIED BY CARFAX DUE TO AGE, LAST RECORDED MILEAGE ON CARFAX WAS 45,000, TITLE READS EXEMPT DUE TO AGE, FEEL FREE TO CALL, INSPECT ANY CAR PRIOR TO BIDDING OR BUYING ASK ALL QUESTIONS BEFORE YOU BID IF YOU HAVE ANY AT ALL, WINNING BIDDER IS THE NEW OWNER, NO RENEGOTIATING AFTER THE END OF AUCTION, AS WITH ANY OLDER USED VEHICLE, MINOR SIGNS OF USE, WEAR, REPAIR, RESTORATION, PARTS REPLACEMENT AND AGE MAY BECOME VISIBLE UNDER CLOSE VISUAL INSPECTION WE CAN NOT BE HELD RESPONSIBLE FOR THESE MINOR ISSUES, WE DO NOT KNOW THE HISTORY ON THE CAR FROM DAY ONE UNLESS NOTED IN LISTING, BUYER IS RESPONSIBLE FOR ANY TAXES, PLATES OR ANY FEES ON VEHICLE IN HIS OR HER OWN STATE AT TIME OF TITLE AND REGISTRATION

Our Location :



Installed Options

Option Packages

Factory Installed Packages

BODY-SIDE MLDGS *FLEET ONLY*
\$60

ELECT REAR WINDOW DEFOGGER
\$150

ELECT TRUNK OPENER *FLEET ONLY*
\$50

ETR AM/FM STEREO W/SEEK-
SCAN/CASS/GRAPHIC
EQUALIZER/DIGITAL
CLOCK/EXTENDED RANGE SOUND
SYSTEM PREFERRED EQUIP GRP)
\$267

-	
FRONT LICENSE PLATE BRACKET *N/C*	
-	
HD COOLING \$40	
-	
HD FRONT/REAR SUSPENSION-INC: INCREASED CAPACITY FRONT/REAR SPRINGS/MATCHING SHOCK ABSORBERS	\$26
-	
LIGHTING PKG *FLEET ONLY*	\$50
-	
LIMITED SLIP REAR DIFFERENTIAL AXLE	\$100
-	
PREFERRED EQUIP GRP 1-INC: COLOR- KEYED FRONT/REAR CARPETED FLOOR MATS, HD BATTERY,EXTENDED RANGE SPKRS, BODY-SIDE/WHEEL OPENING MLDGS *NET*	\$196
-	
PREFERRED EQUIP GRP 2-INC: COLOR- KEYED FRONT/REAR CARPETED FLOOR MATS, HD BATTERY,EXTENDED RANGE SPKRS, PWR DR LOCK SYSTEM, INTERMITTENT WIPER SYSTEM,AUX LIGHTING,ELECT SPD CONTRL W/RESUME SPD, COMFORTILT STRG WHEEL, BODY-SIDE/WHEEL OPENING MLDGS *NET*	\$816
-	
PULSE WIPERS (REQ: N33 TILT WHL) *FLEET ONLY*	\$55
-	
PWR DRIVER SEAT (REQ: A31 PWR WINDOWS, V3 OR C3 SPLIT SEATS) *FLEET ONLY*	\$240
-	
PWR PASSENGER SEAT (REQ: AG1 PWR DRIVER SEAT, A31 PWR WINDOWS, V3 OR C3 SPLIT SEATS) *FLEET ONLY*	\$240
-	
PWR WINDOWS *FLEET ONLY*	\$285
-	
PWR-ELECT DR LOCK SYSTEM	\$205

-
SPD CONTROL *FLEET ONLY*
\$175

-
SPORT SUSPENSION-INC: INCREASED
CAPACITY FRONT/REAR SHOCK
ABSORBERS,FRONT/REAR SPRINGS
REAR STABILIZER BAR, LARGER
FRONT STABILIZER BAR (REQ: QHJ
TIRES & G92 AXLE) **N/A W/G80
AXLE** *FLEET ONLY*
\$49

-
Option Packages Total
\$3,004

Rare Performance Motorcars

rpmotorcars.com

623-580-1473

20817 North 20th Ave

Phoenix, Arizona 85027

© 2020 AutoRevo - All rights reserved. - Powered by AutoRevo